

The Painswick Beacon

Vol. 28 No.6

September 2005

Tour de France

The Beacon is pleased to reproduce notes made by Robert Goddard about his exciting, and rewarding, journey.

What an adventure this was going to be.

On 16th July I made my way to the Waterloo Eurostar station to meet the other members of the Tour challenge before boarding the train to Paris. After a short coach trip in Paris to a transfer station we boarded the high-speed TRV train to Grenoble and our first night's hotel. Next morning, after breakfast, we met the support team for a short briefing before the 'big moment' was upon us - I had to get on my bike and start peddling with the other members of the group.

Following a gentle ride out of Grenoble we pass through the villages of Brie and Vizille before stopping at Bourg d'Oisans for lunch. By now we had cycled 50km with the hardest part of the day's ride still to come, a 15km 21-hairpin climb to the village of Alpe d'Heuz, and our hotel for the night.

Day 2 started with the 15km descent back to the valley we had climbed the previous afternoon; ah well! Turning left we followed the road to Briançon, crossing a dam and cycling through a number of mountain road tunnels. The lunch stop was at La Grave, by which point we had cycled about 40km, but with the weather being now cold and wet lunch was taken quickly.

Leaving the village of La Grave the road climbed steadily up the Col du Louten for some 12km before we turned towards Col de Galibier and a further 8 or 9km climb to the summit at 2800m above sea level. After a short stop at the top we cycled down to the village of Les Verneys where the day ended.

Day 3 was a well earned rest day, and a chance to relax in the lovely Mountain Alps village.

Day 4, our third cycling day, was to be a hard one with two big climbs in store. The first of these was the Col de Telegraphe with, compared with experience so far, an immediate gentle 5-6km climb - but followed by a tight descent into St.Michel-de-Maurienne. From here we followed the valley road to a refreshment stop at about 40km. The second climb of the day was to follow, up the Col de la Madeleine some 22km to lunch and 2000m. The down-hill ride after lunch was long and gentle to Briançon in the valley below, with a right turn to Moûtiers and the end of our third day - something like 100km in total since breakfast.

Day 5 was to be our longest, by far; some 130km awaited us with two big hill climbs. A pleasant start took us 30km to Albertville for drinks before climbing the Col les Saisies after 25km for lunch - and truly amazing views of Mont Blanc just visible in the distance among the clouds over my right shoulder in the photograph. The descent was by far the steepest and tightest of the tour route, with some heart-stopping moments caused by a bad case of 'brake fade'. Once at the bottom, in the village of Flumet, the second climb of the day started almost immediately up the Col des Arias for 10km to the top and the welcome sight of our support team and Steve from the Meningitis Trust - and a glass of bubbly to toast our successful challenge - all this prior to the final descent of 30km to Annecy and the close of the day's challenge.

After a rest day we transferred back to Paris to watch the finish of the Professionals' Tour before returning to England on Eurostar.

The Tour Challenge was a great experience, a bit hard going at times, but well worth the training and the pain just to be able to say **"I rode 250 miles, climbed nearly 20,000 feet in four days, and all on some of the hardest stages of the Tour de France. And, as a bonus, I raised £2,600 for the Meningitis Trust and am indebted to everyone who supported me with their donation"**.



Rosie v Autism



Many of you will remember little Rosie Morris who lived on St. Mary's Street with her parents Andy & Kara until last year. Rosie (now 4 years old), seemed to be slow developing, and last year was diagnosed with severe autism. Unfortunately, since then, she has also developed epilepsy.

Rosie's family have decided to put her on an intensive intervention course lasting two years in the hope of helping her to learn to talk and to provide her with many of the skills that will enable her to live a more fulfilling life.

They will be holding a **promise auction** in the Painswick town hall on the 7th and 8th of October to try and raise the funds needed for Rosie's program. Around £17,000 will need to be raised for the first year. If there are any artists or crafts people out there who wish to donate a piece for the auction or if anyone wishes to make an enquiry or a donation, please phone Andy or Kara Morris on 01453.768522.

The Beacon hopes to keep readers updated on the amount of money raised and Rosie's progress through her course. Next month we will carry more information about the up-coming auction.

Elsewhere in this month's issue invitation to **chess**, the horticultural **show attractions**, autumn **club programmes**, a **spotted streaker**, the **joys of coach trips**, those **blues carry on**, new care centre **liaison group**, I-spy **looking up**, the superb **flower festival**, juicy fruity **drinks**, cracking **garden party**, a **concert for seamen**, sob for the **telephone box**, some **fuming in a village**.

No report this month as the Parish Council took a 'break' in August.

Painswick Educational Foundation

The Trustees of Painswick Educational Foundation are pleased to announce that Peter Grant, well known as former Clerk to the Parish Council, has kindly agreed to take over from Michael Little as their Honorary Clerk with effect from 1st September 2005.

The Foundation is able to make small grants to boys and girls in the civil parish of Painswick to assist with their educational expenses. The next meeting of the Trustees will be held this month, September. Application forms for grants are available from The Clerk, Painswick Educational Foundation, The Town Hall Painswick. Glos. to whom they should be returned completed *as soon as possible.*

Michael Little

Wycliffe and the Mission



There will be a concert by the choristers and soloists of Wycliffe College in St.Mary's Church at 7.30pm on Friday 30th September.

It will include a wide variety of music old and new, from Haydn to John Rutter. Tickets available from next Monday are £7.50 for adults and £3.50 under 18s and full time students; all obtainable from the Post Office, the Shetland Shop, by telephone 813444 or on the door.



All proceeds are in aid of the Mission to Seafarers. Come, bring the family, support a good cause and hear some fine young local music makers.

John Parfitt

library info

You may think the shelves in the library are looking a little devoid of stock! Don't be alarmed, this is part of an ongoing process

to weed out those items which are not issuing, are in poor condition, or in the case of non-fiction, have information which is no longer current or relevant. This process will lead to us having more room on the shelves for new stock - however - you

can help. What would you like to see in **your library**, more crime, travel, large print etc.?

Do call into the library and let the library staff know your preferences. We are here to help.

Incidentally, as a result of our stock edit, we have an on-going book sale, so why not be tempted with a few books for your holidays. You can fill a carrier for only £1.00!

We now have an excellent collection of **DVDs for hire** (from £2.00 per week) and we are selling off some of the video stock for £2.00 each (this offer does not apply to the premier collection)

Kath Pritchard Library Service Manager

Richmond Painswick - first Manager

Susie Oakley has been appointed Manager of this major enterprise, and takes up her duties from 19th September. Already much involved with village activities, including Painswick Playgroup and assisting with the 'Puffins', Susie (41) is looking forward to the challenges which are in-built with a scheme such as is currently under construction off Stroud Road.

Asked what her initial reaction was to the appointment Susie said "Excited and privileged. I think the concept of integrated care which Richmond has pioneered is superb, and that it is coming to Painswick is a true bonus. I really enjoy being involved with the older age group and believe I can identify with their needs and requirements."

With children in the Croft School and the playgroup, Susie will be bringing strong local knowledge and social concerns to

her new tasks. Where there are, in due course, opportunities to open up to maximise the relationship between this enterprise and the village Susie will be well placed to seek them out and bring her considerable career knowledge to bear. As an Associate of the Institute of Chartered Secretaries and Administrators, Susie Oakley has already held very senior posts in both the public and private sectors. Such ranges through Project, Commercial and General Manager posts with the application of staff, system and advanced technological skills in large and small undertakings.



Living in Hollyhock Lane Susie will be creating office and associated services on the Stroud Road site fairly quickly, and the Beacon hopes to publish that

new address and telephone contact particulars as soon as they become available.

Garden Party Tents From
spaceintense

Tel: 01452 813658
www.spaceintense.co.uk

J.P.Wheeler
High Quality
Decorating
Services
For a
Free Quote
Tel/Fax
01452 740828

ART LESSONS
IN YOUR OWN HOME

DRAWING, PAINTING,
CLAYWORK

Explore the figure, portraiture, still life
Learn techniques of pottery / modelling

Basic materials provided
Individual sessions, or get together with
a small group of friends

Contact Elizabeth: 07748733488

THE BRITISH LEGION



Poppy Day

If you found yourself moved by the VE and VJ Memorial events, would you consider moving your feet and helping us with the annual Poppy Day collections in November?

If so please move your finger and dial me on 813326.

I apologise for the puns but do so need your attention.

Pat Burrows



Local History Teaser

Our picture shows a group of people gathered in Friday Street. Can you say what the occasion was and give the date (quite a significant one)? Who is the man in full naval uniform in the left foreground and what do you know about him?

Answer in next month's Beacon.



The answer to last month's teaser: I'm afraid it really was a tease. The photograph was taken in 1934 and the B52 apparently flying over Bisley Street was superimposed on the original picture. The building on the left was the Painswick Telephone Exchange and the business on the right was Mr Luker's barber shop, signified by the pole protruding diagonally above the window.

The Local History Society begins its new season of presentations on 20th September when Mr Peter Bloomfield, Deputy County Archivist, will talk on tracing the history of a house. The meeting starts at 7.30pm at the Croft School and everyone is welcome.

Carol Maxwell

Players in Lost Panties Fire Hazard?

"I hear you've lost your panties!" Startled, I turn from contemplating Painswick's glad-to-be-grey phone box to see that I am being hailed from afar by a Painswickian of some stature.

"Er... I don't think..." I mumble, desperately trying to recall any recent embarrassing incident that might have prompted such an outburst. Some hazy recollection of a recent PP committee meeting flickers worryingly at the back of my mind.

"It was in last month's Beacon," he continues, "apparently it said you Players lost your panties in the Painswick Centre."

Suddenly, the penny drops: "Not lost panties!" I reply "Last panto! That's the name of our next production (1st, 2nd and 3rd December), *The Last Panto in Painswick* by David Tristram at the Painswick Centre."

I explain that it isn't exactly an actual pantomime but rather the hilarious tale of one AmDram society's attempts to put on a panto, with all the trials and tribulations that that involves. He lets this sink in for a moment.

"And so that's when the panties get lost, is it?" he persists.

"Er... no... Listen, why don't you come along to the auditions - Tuesday 6th September, 7.30 pm at the Painswick Centre? Then you can find out all about it?"

As he is considering this, I go on to say that *Last Panto* is actually one part of a double bill with the YiPPies - our Young Painswick Players - who will be staging their first production, *Red Hot Cinders* by Richard Tydeman and that if he knows any youngsters interested in getting involved he should tell them to give Lesley Wolowiec a call on 813295 or simply get them to turn up on Tuesday 13th September at 7.00 pm in the Painswick Centre, when all will be explained.

He looks perplexed: "Red hot cinders in the Painswick Centre. Not sure that's a good idea. Sounds like a fire hazard to me. Particularly with kiddies involved." Before I can correct him further, he exits rapidly in the direction of the Fire Station.

Whilst we're on the subject of corrections, I should correct something I wrote in last month's Beacon: the famously dramatic Painswick Players AGM on Thursday 22nd September at 7.30 pm will now take place in the Main Hall and not the Cotswold Room as advertised. It seems that there was a double booking for the Cotswold Room and to avoid a noisy clash with the Music Appreciation

Group, we have magnanimously agreed to move into the Main Hall. So, if on the 22nd, you find yourself immersed in the strains of Verdi, Wagner, or vottever, you'll know you're at the wrong meeting... probably.

Jack Burgess



FIVE VALLEYS VETERINARY SURGERY



130 CAINSCOSS ROAD
STROUD

DEDICATED SMALL ANIMAL
VETERINARY PRACTICE

01453 765304

ASPINALL AULD & STEVENSON
OTHER SURGERIES

GLEVUM WAY 108 BRISTOL ROAD
ABBEYDALE QUEDGELEY
01452 300596 01452 722089

Are you having problems completing your Self Assessment tax returns?

If you are self employed, a partner or own a limited company are you struggling with your accounts?

Would you like an 'easy to use' accounts system?

If your answer to any of these is yes, contact me now.

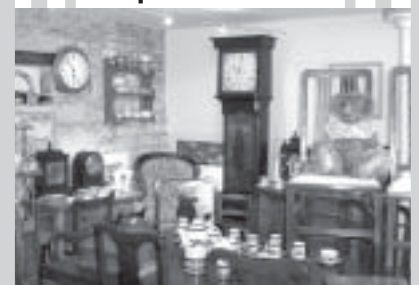
Roland Boggan
Chartered Accountant

Tel: 01452 812075

'Moorea', Pitchcombe, Stroud, Glos

Email: rboggan@yahoo.co.uk

THE CHAIRMAN Antiques & Crafts



a distinctive mix of antiques, unusual hand-crafted gifts and interesting items for the home

The Old Bakery New Street Painswick GL6 6UN
01452 810820

Open Tuesday to Saturday 10am - 5pm

The tsunami London - Painswick - Hikkaduwa

It was Boxing Day 2004 and I'd been in Painswick for a few days visiting my parents for Christmas. I grew up in the village and it's always great to return. I've been in London pretty much since university and Painswick is a great place to escape to for some peace and quiet and a bit of sanity! As I took a walk up Tibbiwell that morning wondering how I'd managed to eat so much turkey the day before events on the other side of the world were about to change my life. My cousin, who taught at an international school in Colombo, was taking a break on the coast and unbeknown to me another friend had taken her family on a last minute holiday to the south west coast of Sri Lanka. Luckily my cousin changed his plans the night before and wasn't on the beach when the towering wall of water struck. My friend wasn't so lucky and minutes later was running for her life knowing that her son had been in the sea as the tsunami struck. Miraculously largely through the incredible generosity and bravery of local people they both survived.

The events in the Indian Ocean I think touched us all - I don't know anyone that didn't give to the DEC and I was glued to the television set as events unfolded. In the next few weeks my cousin managed to raise quite a bit of money which he used to buy school kit, bags, uniforms and other supplies to take to some of the schools that had been affected. I teamed up with some schools in the UK and about 4 weeks later landed in Colombo. Driving down the coast it was approximately 20 miles south of the capital that the first signs of the tsunami began. The waves that hit Sri Lanka hit the east coast head on. This part of the south west had been hit with almost random effect - a village in one location was occasionally entirely spared but a few hundred yards up the coast and the scene was one of utter devastation. When we arrived in Hikkaduwa we drove to the school and gave out the equipment and school provisions we had bought in Colombo. The kids there were incredible - many had lost almost everything.

We stayed the night in the town and were then due to go back to Colombo. I decided to stay on so that at the very least I could spend some money to support what should have been a thriving holiday destination. The following day sitting on the beach

in the morning I noticed some wood sticking out from the sand - excavating it with my foot to my horror it turned out to be an entire fishing boat that had been buried vertically. It was then that I realised that I couldn't just sit around and that I had to do something. Teaming up with a small NGO I was introduced to a woman who had lost her husband and now had five children (three shown here) to bring up - their house had been flattened. They lived to the north in Thelwatta where due to peculiarities with the coastline there had been three truly massive waves. The landscape was surreal and nothing on TV could prepare you for it. At first you felt totally disconnected and then, after a few days, you felt as if you were watching a bad film. It was only after about another 4 or 5 days that the true enormity of the disaster really sank in. Houses up to 2km from the coast had been entirely washed away.

I was lucky to have been left a little bit of money a few years ago and so was privileged to be able to help some families out - hiring builders and some workmen to rebuild a few houses. A business analyst specialising in IT I also found that my skillset was actually very useful in bringing at least a tiny bit of order to the chaos and ended up helping a number of smaller charities that were really making a difference.

Landing back in London having seen what I'd seen I knew my life couldn't be the same any more. I came back to Painswick for a few days and I found it almost impossible to believe that Painswick and Thelwatta were on the same planet.

My former life as a well paid consultant working in the City and for central government is now over and I've set up a charity providing professional support to smaller charities that are really making a difference in the developing world. It's currently supporting projects in Mali, Guatemala and Sri Lanka. I've been back to Sri Lanka since my first visit to help set up a computer system for a hospital programme on the south coast. In Thelwatta things are gradually getting better but it will take a number of years to rebuild the village. For further information on the charity please visit www.northsouthsolutions.org

Chris Anders

Enterprise bears fruit

Cast your mind back a few months to an article in the Beacon about a young man's plan to run a juice and smoothie bar in Cheltenham. David McCullagh, Painswick born and bred, was determined to present the public with delicious, pure fruit drinks, freshly squeezed and processed to order. Take a walk through the Regent Arcade on any day of the week and, right there in front of the lift, you will come upon the outcome of his meticulously planned vision - Squeezeology.

David and his team of six started serving their range of fresh smoothies in July and will be there until at least October. So successful has it proved so far that they are having difficulty keeping up with demand. After the first three weeks they had to double the size of the serving area and now find they are keeping their customers satisfied non-stop from 8.30am to 6.00pm seven days a week.

With characteristic enthusiasm, David is already talking of expansion into preparing take-away smoothies for local businesses.

He believes in the quality and goodness of his product. You really should seek out Squeezeology and experience for yourself the pleasure of one of his pure, fresh, fruity smoothies.



Carol Maxwell

THE PAINSWICK PHARMACY

NEW STREET. Tel. PAINSWICK (01452) 812263

OPENING TIMES

MONDAY TO FRIDAY

9.00 - 1.00 AND 2.00 - 6.00

SATURDAY

9.00 - 1.00.



Trevor Nobes Stone Masonry

Qualified to NVQ & Advanced City of Guilds in Stone Masonry

Dry stonewall specialist

Tel 01452 741128

Mobile 07709 949649

Austerity Lunches

The 2005/2006 season of Austerity lunches will commence on Monday 10th October at midday in Christ Church Hall.

The committee has agreed on the charities we will support for the coming year and wish to thank all those who contacted us with suggestions; sadly, we could not include you all. We will continue our ongoing commitment to Christian Aid as well as supporting The Family Haven and the Stroud branch of the Citizen's Advice Bureau. Both these local charities are involved in helping people in times of difficulty and rely heavily on voluntary help and contributions.

As well as helping charities the lunches also offer the people of Painswick the opportunity to meet and enjoy fellowship together. Thanks to the groups and individuals involved, who generously donate soup and freely give their time to act as hosts, we are able to run for twenty weeks from October through to March. However costs continue to rise, so the suggested donation will increase to £2.00, with an extra 50p for tea or coffee.

We thank everyone for their continuing support and look forward to another successful year.

Gill Gyde

Sheepscombe Bridge Club

Bridge in Sheepscombe Village Hall starts again on Thursday 15th September with start of play at 7.15pm.

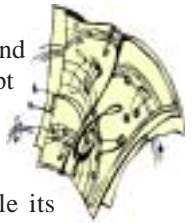
We welcome all enthusiasts, so do come along for a warm welcome and a game of bridge. £1 per player or £10 subscription for the season. If you need a partner of have any queries do phone me on 812588.

Joy Edwards



Season 18 starts soon

Painswick's Music Appreciation Group restarts on 22nd September, and anyone interested is welcome to saunter along for the 7.30pm prompt start in the Cotswold Room at Painswick Centre - or telephone 813101 for copy of the complete programme of thirteen meetings and two concert outings.



Music appreciation Group



The Group prides itself that while its members have one thing in common, an enjoyment of music drawn mainly from the classics, they differ widely in their knowledge of the background or interpretation of compositions or composers. All find that evenings together in the comfort of the Cotswold Room bring uninterrupted enjoyment and insights, usually meaning that tuning in to radio broadcasts or turning up their own recordings back home brings a whole lot more to the sounds received.

Why not call in?

Chess

Anyone interested in starting a Painswick Chess Club, or a 'Ladder' or competition is invited to contact Dick Jarrett at Hamfield in Edge Road, or telephone him on 813298.



The Beacon has heard of individuals playing chess, and wondered whether widening their range of partners might bring an added zest to their hobby.

We will be pleased to publish information about responses to Dick's invitation.

Pilates in Painswick

Pilates is now a world wide phenomenon and will soon be available on Thursday evenings for local residents. So what could it do for you? Done regularly, Pilates can increase flexibility, co-ordination, balance, and strength. Participants also often find breathing and posture improve, and everyday aches and pains ease. Many top sports people practise Pilates as an important component of their overall fitness. I myself trained to become a teacher 2 years ago as Pilates cured an 18 year back problem!

Subject to demand the 8 week course will be in the Town Hall on Thursday evenings between 7pm and 8pm, commencing 6th October. Contact Julia Currie for more information on 01453 764376.

A 'Door to Door' Bus Service
01452 423598

price davis
Chartered Accountants

All Taxation & Accountancy Needs

We're here to help. Forward thinking professionals with old fashioned values on service and quality.

Tel: 812491 www.pricedavis.co.uk

The Old Baptist Chapel, New Street

LAWNMOWERS
SERVICE • REPAIR • SALES

- HONDA
- MOUNTFIELD
- QUALCAST
- STIHL
- HAYTER
- ATCO
- FLYMO
- WESTWOOD
- KUBOTA
- COUNTAX

FREE LOCAL COLLECTION & DELIVERY

CHELTENHAM MOWER SERVICES
MOBILE: 0831 282533
TEL: 01452 714098
www.users.globalnet.co.uk/~cmowers

GRAHAM FEAKINS HND
Tree Surgeon

- ✓ Tree felling
- ✓ Reshaping
- ✓ Stump grinding
- ✓ Hedge trimming
- ✓ Fruit tree pruning
- ✓ Garden clearance

PROFESSIONAL QUALIFIED FULLY INSURED RESIDENTIAL COMMERCIAL FREE ADVICE

OVER 20 YEARS EXPERIENCE

FULL COUNTY COVERAGE

01242 680362

GREEN ORCHARD, DEERHURST WALTON, CHELTENHAM

Maths and English After-School Programmes

Every parent wants their child to realise their full potential. At Kumon we can help your child to excel in their maths and English, and boost their confidence too. With a centre near you it's convenient too. Give your child the opportunity they deserve.

Call Kumon today.

Stroud study centre

Classes are held twice a week at: Stratford Park Leisure Centre, Stratford Road, Stroud

for more information call **01453 764 631**

Every child can shine
kumon.co.uk

KUMON

Leavers' service

The school held our annual Leavers' Service in St Mary's Church on 21st July. As well as saying goodbye to the 27 members of Year 6, we were also saying farewell to our Deputy Head, Gary Tucker. He is leaving The Croft after eight and a half years, to take up the Headship of Temple Guiting Primary School from September. He will be much missed by the whole school community, as demonstrated by the fact that over 100 past pupils and their parents came to school earlier in the week to wish him well, at a farewell event organised by Jennifer Barnett and Helen Gardner. He received John Lewis tokens and various presents including a guitar – we are told that he has already learned several chords!

The Year 6 pupils presented memories of their time at the school and sang two songs for the assembled school and parents. All the children received a dictionary from the school's PTA and a book from the Churches Together in Painswick.



Awards were given as follows:

The Lucy Hyett Cup for Drama
(awarded by the Painswick Players)

The Broadham Cup for Sport
(awarded by the sports clubs)

The PADFAS Cup for Art

The Painswick Music Society Cup

Bernard Jones' trophy for contribution
to their class

The Cow Shield, for overall contribution
to the school

Lucy Richardson

shared by Alicia Barnett and Josh Reed

Abigail Garbett

Oliver Smithson

William Jackson and Stephanie Jones

Emily Dowdeswell and Kyle Douglass

Many congratulations to all of these children, and to the whole class. They have been an excellent year group, performing at a high level in their SATs tests, in sports and in the arts. We wish them all well for their new challenges at their secondary schools.

Janet Hoyle



The Beacon regrets that it was unable to carry this news last month, when it was 'fresh', but a virus obstructed its receipt at the last moment. Ed.

Musical toddlers

Do you have a baby or toddler? If so you may be interested in joining the Painswick Valley Toddler Group. Established 17 years ago this lovely little group offers the unique combination of a structured music session followed by a mid morning snack and play in Pitchcombe Village Hall.

The music is led by our very experienced music teacher, Gill Burt, and involves singing, action, dance and percussion to a variety of traditional songs and nursery rhymes often with seasonal variations.

This is followed by a break with tea/coffee for the grown ups and a healthy snack and drink for the little ones. Afterwards there is a further hour of free play in the hall. A time to chat and meet up with other parents and carers.

We meet every Monday during the school term from 9.30 – 11.30am at Pitchcombe Village Hall. For further details contact Kate French on 813383 or come along at the beginning of term.

Iris McCormick



THE BOWEN TECHNIQUE

A gentle, effective therapy for the treatment of back pain, neck pain, frozen shoulder, tennis elbow, sports injuries / prevention of, knee pain, respiratory conditions, IBS, migraine and much more.

For more information or to make an appointment call Madeline Curran on

01452-813925 / M- 07774-090364

Or visit

www.thebowentechnique.com.

PETER ELY PLUMBING & HEATING

General Plumbing
Central Heating (Gas, LPG, Oil)
AGA Servicing, Solar Water Heating

CORGI Registered

OFTEC Registered

TELEPHONE 01452 814305
MOBILE 07779 099320
Woodland Cottage, Jack's Green, Sheepscombe



Allen Hale

Your local stockist for
The Real Meat Company

Allen Hale

New House, Friday Street
Painswick. Tel 01452 813613

BRINGING YOU FLAVOUR
WITHOUT EQUAL
WELFARE WITHOUT COMPROMISE

Richmond Painswick - Standing Liaison Group (SLG)

When the idea of a nursing care project was conceived the group who placed the proposition before the public obtained, from the County Council, whose land was to be used, a guarantee that there would be long term certainty of use and operation. The GCC therefore introduced two clauses into the contract of sale of the land which (as the group and the GCC published at the time) stated

- "including a legal restriction that allows priority of access to the accommodation for people with a local connection, and
- establishing local managerial representation, this being to sustain the development's relationship with the village and to enhance the attractiveness of the scheme to a developer while meeting the needs of our community."

Although a liaison mechanism did not appear to be necessary until a point in time closer to the care centre itself nearing completion the Parish Council recently urged its formation sooner rather than later in order to create a channel through which associated matters might be better dealt with and better understanding reached. The County Council sought the support of the original group to bring this about, and a mechanism has now been put in place to achieve this end. An initial meeting to which all Parish Councillors were invited drew three of their number and, together with three of the original foursome and Keith Cockell MD of Richmond Care, they agreed general terms of reference which have subsequently been agreed by GCC.

From this it followed that the SLG needed to be formally 'recognised' by the parties present (and subsequently approved by GCC) and that its terms of reference should be as follows:

1. To facilitate bilateral understanding between Richmond Painswick, its residents and the wider local community including existing community groups. In so doing, it should be appreciated that there is considerable potential for being mutually supportive.

2. Whilst admission criteria for occupancy of 'care' accommodation within the centre must be a matter for the professional interpretation by the senior nursing officer in post, it was agreed that one member of the SLG or other suitable resident in the Painswick community (including a deputy) nominated by the SLG be briefed in confidence by the senior nursing officer on a regular basis and render service on a consultative basis as required. In this connection it is to be clearly understood that client confidentiality would be retained at all times.

3. The existence of a standing liaison group (SLG) should be made widely known and be the focal point for any matters falling within 1 and 2 above.

4. Matters considered might, where appropriate, be communicated through the good offices of The Painswick Beacon from time to time.

Continuity of the SLG is of importance if it is to properly discharge its remit. A maximum of seven was proposed with the individuals at the first meeting (or others the SLG nominate in their stead) being the initial SLG. Bearing in mind that some 'freshening' of the minds which have for so long been involved may be advantageous, an early replacement of (say) two of the six (non Richmond Painswick) from names suggested by the public could be considered.

It was agreed that this mechanism/liasion should not be re-

garded by any party as 'representative' since this could detract from its central purposes. If and when the distinct interests of one party (e.g. the Parish Council) needed to be represented then it would be for that party to liaise direct.

A first full meeting of the SLG took place on 5th August, at which the appointment of the Manager, Susie Oakley, was made known (*see report elsewhere*). The meeting was also informed that occupancy of the first 5-6 of the associated apartments was expected to begin before December and the remainder in the first half of 2006. One would be temporarily earmarked as a base for administration and night duty staff serving that accommodation. Soft landscaping was expected in the spring, and the protective hoardings progressively removed from this autumn.

The acquisition of Richmond Care by Barchester Healthcare was explained, a circumstance which had proved to be essential to the overall funding of this £15m+ project in Painswick. The Richmond Care group is retaining a distinctive role within Barchester's considerable range of services and Keith Cockell has been appointed to progress no fewer than some 15 further 'villages' of this type. The Painswick project continues to have a 50% stake by Mr Cockell and his original partner and its continued integrity is therefore assured. Barchester have some 10,000 'beds' throughout the country, including those at Badgeworth and Moreton Hill near here and, with their differing medical registrations, provide an extension of service from which Painswick residents should gain. The interest of Richmond Painswick in such as continuance of the library service was noted, as was their giving further thought to ways in which their services on site might have outreach to the local community through such as domiciliary care, etc.; this a subject to which the SLG will return at a later date.

The SLG received an in-depth update upon design of the care centre, now under construction for completion late in 2006, and decided to extend an invitation to Parish Councillors and the two District Councillors to receive the same information. The meeting, for early September, was envisaged as being solely to increase the depth of understanding of construction now in progress and operational requirements dictated by regulations and retention of staff.

That meeting has been deferred, at the request of the Chairman of the Parish Council's Planning Committee, pending its being debated by the Council at its next meeting. (Subsequent to that decision, the Parish Council received a request from Mr.Cockell to meet with council members. The meeting was arranged for Thursday this week - 1st September.)

For communications with the SLG the address to be used is Longhope, Blakewell Mead, Painswick GL6 6UR.

NEW at THE FALCON INN

Call 01452-814222



BREAKFAST - The Falcon Inn is opening its doors for Breakfast every morning, Mon - Sat from 7.30am - 9.30am, and Sundays from 8.00am - 10.am.

Come and enjoy Cereals or Fruit, as well as a Full English or Warm Continental Breakfast, Tea or Coffee, Juice and Preserves. All Welcome!

SUNDAY ROASTS - Available EVERY SUNDAY from 12.00pm - 5.00pm.

Two choices of Roast Dishes served with all the traditional trimmings. Delicious!





SMITH BROS.

GENERAL BUILDERS AND DECORATORS

- NATURAL STONEMWORK
- ROOFING - ALL TYPES
- NEW BUILD & EXTENSIONS
- ALL REPAIRS - MAINTENANCE WORKS
- ESTABLISHED 1956

2 Gloucester Street, Painswick,
Gloucestershire GL6 6QN
Telephone: Painswick (01452) 813051



Juniper Hill - changes

A.E. Cameron from Winterbourne, who clearly reads the Beacon from time to time, writes:

As a weekly visitor to the Painswick area, and an avid Beacon reader, I have been surprised and disappointed that no mention has been made recently about the hideous changes being perpetrated on Juniper Hill and the footpath entrance to Frith Woods, in the name of Heritage Lottery funded restoration.

My regular visits to the area invariably involve dog walking through this previously beautiful woodland, all the more amply rewarded by the stunning views down the Painswick Valley to the River Severn when you emerge from the woods into the fields. Notices erected at various points in the woods over the last few months intimated changes in public access to the grazing land which were upsetting and alarming in themselves but the reality of the situation at the moment is even more distressing. The "footpath" entrance to the woods from the top of the Slad road is now a full blown track for heavy vehicles with dead and dying saplings and bushes on either side of it; a trench has been dug, for what appears to

be a piped water supply, along the length of the footpath extending into a wide scar across two fields (so far ?) of the grazing area; vast areas of the circumference of the grazing land are now enclosed by ugly and destructive fencing which closes off well established paths, for people and animals, from the woods up onto the fields.

In all my rambles through Frith Wood and the Morley Penistan Nature Reserve in the last ten years I have never met more than three people out walking at one time. Why it was considered necessary to conserve the grazing land against such obvious overuse (!) is very difficult to understand. The horrible effects of the current changes cannot possibly be considered as "Caring for the Cotswolds", an organisation which apparently endorses this project, by anyone who has previously been fortunate enough to enjoy the area. Does no one else in Beaconland care that this is happening?

Concerned that there might otherwise be some public misunderstanding, the Beacon sought an authoritative statement from Jenny Phelps of the Cotswolds Conservation Board, who appreciated the opportunity to inform us:

The private land being fenced between Juniper Hill common and Frith wood is land that has been in 10 year setaside. It currently has no public rights of way and though people may have walked and rid-

den over this land they are technically trespassing. The land is not subject to the Right to Roam as it is private arable land that could be ploughed up and returned to production.

The aim of the project is to protect the wildflowers and butterflies found on the common from being lost to woodland encroachment, and those on the setaside fields from being replaced by arable production. As part of the project, a permissive footpath and bridle way are being allowed by the owner so that people can continue to enjoy the area.

The Project will link Frith wood and Juniper Hill common Sites of Special Scientific Interest at a landscape scale, with the whole area being sympathetically managed for wildlife. The fields are also being retained as grassland to create a viable grazing area for the farmer so that the area can be sustainably managed in the future. To enable grazing to take place, fences and water supply are required. The trench for the water supply will be reinstated and the fencing will be soon merge into the landscape with natural vegetation. The Project which will, in the long term, benefit walkers and riders in the area, is supported by Defra Rural Development Service, English Nature, Cotswolds Conservation Board and the Gloucester Wildlife Trust. The initiative was encouraged by local people who were keen to protect the orchid and butterfly species

Wordsearch

Last month we invited readers to find 20 sports featuring in the next summer Olympic Games - and here is our selection:

- ARCHERY
- ATHLETICS
- BADMINTON
- BASEBALL
- BASKETBALL
- BOXING
- CYCLING
- EQUESTRIAN
- GYMNASTICS
- HOCKEY
- JUDO
- ROWING
- SAILING
- SHOOTING
- SOFTBALL
- TAEKWANDO
- TENNIS
- TRIATHLON
- VOLLEYBALL
- WRESTLING

We are told that some readers did well in geography at school. Some countries may have changed their name since then, but we wonder how many of the present sixteen Asian countries you can find in this month's WordSearch?

A	N	K	N	O	R	D	B	A	M	D	N	A	L	N	I	F
C	M	O	A	N	A	P	N	O	I	A	I	V	I	L	O	B
A	I	O	O	Y	P	A	H	A	T	N	L	O	E	I	Z	E
L	D	A	N	G	A	H	E	I	L	S	A	A	M	R	U	B
I	O	D	M	G	N	K	I	R	L	R	W	U	Y	L	L	A
F	E	N	A	A	O	A	A	L	O	I	E	A	H	S	U	S
O	N	A	N	A	J	L	R	W	I	K	P	Z	N	T	I	O
R	R	L	T	R	A	P	I	T	A	P	H	P	T	A	I	A
N	O	I	E	N	P	C	L	A	A	R	O	T	I	I	R	L
I	B	A	I	E	A	I	D	O	B	M	A	C	R	N	W	I
A	B	H	V	V	N	P	I	P	E	R	U	S	U	O	E	S
I	C	T	A	E	R	O	K	H	T	U	O	S	A	B	N	S
S	K	U	W	A	I	T	S	N	A	W	I	A	T	R	A	Y

Design for WIs

Val Dugan has won a competition run by the Gloucestershire Federation of WIs, to design a Christmas card for them. The Beacon cannot help but be pleased that Val chose to enter the very design she kindly prepared for our Christmas



1995 issue, shown (much smaller) here.

It is also pleasing to hear that the Market House Gallery she and three other artists opened in Minchinhampton is going well, and that they appreciate the visitors from Painswick in particular. Val is also exhibiting her calligraphy and botanical paintings at the Malvern Autumn Show on 24/25th September



Eye examinations at home - for the household
Specialised service - free (NHS) for those over 60, including Glaucoma screening and full sight test
Tel. 01453 833272 or 07967 743676 (mobile)
Graham O'Regan BSc FSMC



COMPLETE GARDEN MAINTENANCE
MOWING HEDGE CUTTING
PATIOS PONDS
Free estimates
Phone 01452 813738
Mobile 07702 912392
Established over 15 years
Phone 01452 813738

S.P.GYDE
Carpenter & Joiner
City & Guilds
Purpose made Joinery
General Building Services
Tel: 01452 812587
Mob: 07768 173726

on the common and grassland.

For details of the project and the access routes please contact Cotswolds Conservation Board on 01451.862000

That sad telephone box

Picking up the story we have been running about the telephone box in New Street, Ken Lyons writes: A couple of years ago I passed a similar remark about the grey telephone box and was told there was quite a kerfuffle about this a few years ago and certain prominent residents of Painswick were strongly opposed to the traditional colour. Maybe that's why BT backed off.



This may sound a little surprising in such a tradition-conscious community if you consider that all over the world the red telephone box is as symbolic of Britain and Britain's heritage as the Bobbie's helmet and Big Ben.

If in fact there is no local opposition and no legal or procedural obstacle, I would gladly come down tomorrow and paint it; and provide the materials!

Mindful that BT might wish to consider this offer of time, talent and gloss paint of a 'certain hue' the Beacon contacted BT. They told us that factors of health and safety might preclude their accepting this generous offer, but their engineers will

be inspecting the edifice and telling us whether it merits an overcoat. Watch this space, or that in New Street! Ed.

Bonfires at Edge

Kate Hamilton, of Edge, writes:

Six years ago we became Edge residents, the beautiful clean fresh air and the stunning views are what attracted us most to the area. Like the majority of people here we enjoy our garden especially during the summer months. The clean fresh is/was the bonus when we sit in our gardens and leave our windows open. However, we were not prepared for the settlers and their addiction to the bonfire. An American friend grimaced and commented recently '-why are the folks around here hell bent on polluting your gorgeous air. who are they Sioux or Apache?! I couldn't have put it better - in fact if we woke up one morning and found wigwams camped out on the local green it would not be out of character. Bonfire after bonfire has been a plague again this year; are the offending folks aware we do not all wish to share in their delights of lighting up all day, every day and at whatever time.

We are not complaining of the dry quick and finished with sort but the large banked up smouldering types that are left to rejuvenate from the frequent gusts of wind and which fill my house and garden with smoke and smells. I appreciate we all have large gardens but there are alternatives

such as mulching down and natural compost (all reusable and environment friendly) also the take away method to the local tip (free to householders). To those offenders and you know who you are, keep your bonfires to the bare minimum and let those of us who appreciate the clean and healthy air enjoy our homes and gardens. The Beacon sought information from the District Council upon any regulations applicable to bonfires. It seems that there are no Bye Laws, but Section 80 of the Environmental Protection Act 1990 permits the Council to issue an abatement notice if there is 'persistent nuisance'. Where plastic or tyres are being burned quite draconian measures could come into play. Common sense and neighbourliness save the 'order of the day'. Ed.

Danger on wheels

Jennifer Chapman, who lives nearby, writes:

We live at the top of Gloucester Street where the road takes a right hand bend.

During the summer we have been increasingly alarmed at a few young boys riding their bicycles fast the wrong way down the one-way system. Cars come up the hill very fast and cannot see the cyclists coming.

Would you be kind enough to publish this letter so that parents can explain to their children how dangerous this practise is, so that a tragedy can be averted.

Coach trips await

The next trip available is to Bath, leaving Stamages car park at 10.00am on Wednesday 21st September, returning from the Bath coach park at 5.00pm. The fare, return, is £7.00.



This is followed by one to London next month, Wednesday 19th October. This leaves at 8.30am, returning from Northumberland Avenue (Trafalgar Square) at 6.30pm, with a fare of £10.00.

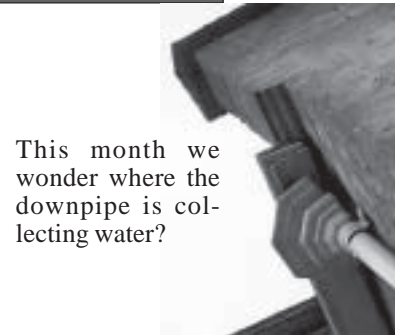
Booking is always essential, so do contact Joan Truman on 813965 or Pauline Berry on 813227. Bookings are only confirmed once cash or cheques - payable to Painswick L&B Outings are received at Little Place, Hollyhock Lane, Painswick GL6 6XH.

CLOCK
REPAIRS
01452 812762
J. D. HOBBS
BA HWS HND, MESH
A Member of the British Horological Institute

Last month we featured a sundial which had recently been revealed. Yes, it is on the frontage wall of the pharmacy - just look up!



Architects



This month we wonder where the downpipe is collecting water?

Home & Dry
Back by popular demand
Dry Carpet Cleaning
Oriental Rugs
New - Spring
Cleaning Service
01452 612229

Horne & Kilmister Ltd
General builders & stonemasons
'The complete building service'
• Extensions, renovations & newbuild
• Garages
• Roofing
• Hard landscaping

Tel: 01452 812760 or 01452 814416
Fax: 01452 814416

Russian Vocal Ensemble

Choir from St Petersburg which will be giving a charity concert on September 1st at 7.30pm. The choir consists of ten professionally trained singers and the leader is Jurig Maruk who was formerly the choir master of the Painswick Choir. The choir are associated with the beautiful Church of the

Church of Spilled Blood. The church was built in 1881 on the site destroyed by a bomb

of Russian Composers from the 17th to the 20th century. It also has a piano with the singers dressed in national costumes and has performed throughout Europe, receiving excellent reviews. The proceeds from this concert, which is being organised by St Mary's Church, will be used to help maintain the grounds of our famous church. It is estimated that £7000 will be needed just to cut the grass and trim the trees this year.

St Mary's Painswick has kindly agreed to support the concert and has offered a car at our disposal a car fitted with invalid facilities and a member of the staff. We are very grateful for their help.

We plan to arrange a poster competition for the children. We would welcome their ideas for a poster. The posters will be put on display in the church and St Mary's. Viewers will be asked to vote for their preferred

tickets for the concert are priced at £10 and are available from The Painswick PCC, the Benefice Office, and committee members.

If you would like to reserve your tickets by post please contact me at Painswick PCC, Warren, The Highlands, Painswick, Gloucestershire GL6 6SL. Please make cheque payable to Painswick PCC.

Nigel Burt

Jazz Evening

in aid of the Painswick Valley Primary Schools

On a balmy night in August a home grown secret from The Painswick Valley emerged in dazzling costumes to give a packed Rugby Club pavilion over an hour and half of beautiful Jazz standards. With Penny Lyons' strong soulful voice and a mix of saxophone, guitars, flute, drums and keyboard together with the glamorous duo of backing singers the audience were captivated.

After some hot Mexican Tortillas they re-emerged to entertain us with hot dance hits and Swinging Soul from the 70's which got every one of the 200 strong audience dancing and clapping until the early hours of Saturday morning.

The band "Too Hot to Handle" is looking for future gigs. If you are interested do telephone Penny on 813243.

Iris McCormick



Art Classes In Painswick

Art classes resume in the Painswick Centre on Friday 16th September between 10.00 and 12.30.

This is a friendly ongoing group of mixed ability. Newcomers are very welcome, the approach is structured with lots of support for complete beginners.

For more information please call Jane Garbett on 812176.

Painswick Blues

We are starting our fourth season of Painswick Blues on Saturday 17th September with Ben Waters, widely acknowledged as one of the most exciting piano players in Europe today. Geoff Barker on the BBC believes that Ben is the best rock and roll pianist since Jerry Lee Lewis. We are also changing the format of the club, it will still open at the usual time of 8.00pm but we will now be serving food from 8.15 onwards.

If you want to know more then please contact me on 814482 or look on our web site www.painswickblues.co.uk.


Make no mistake about it - this is fun and hard hitting music at its best.

Paul Gray

Society's Annual Show in Painswick. The show is the culmination of the horticultural year as it begins in the morning, followed by the show for the public - and the results of the

held in Painswick with its £1.50 entry. Displays ranging from flowers to plants, arrangements and the skills of the exhibitors. Cakes, bottle their jam or chutney. Techniques of other domestic exhibits. A section is taken in mounting exhibits. A 'section' with high standards distinguishes it from a wide age range. There will be more than just the opportunity to admire the numerous exhibits. Teas, coffee, and a sale.

For the Painswick Society



• painswick osteopaths •

Paul Stamp D.O.
Helen Froggatt D.O.

Tel: 01452 301748

Painswick Surgery, Gyde Rd. Painswick

- Structural
- Cranial Osteopathy
- Sports Injury
- Migraine/Whiplash
- Parking Available

ELECTRICAL AND ALARM SERVICES

New Installations, Rewires, Extra Sockets, Lights, Showers, Security Lighting, Economy 7 Heating, etc.

Professional intruder alarm systems fitted from £330.
Remote control car alarms fitted from £70.

Door Entry and Closed Circuit Television Systems fitted

For a friendly, prompt and reliable service contact **Steve Gallagher** on 01453 791209

ALL WORK FULLY GUARANTEED WITH NO ADDED VAT



GODDARD'S GARAGE
Cheltenham Road Painswick

- * Full servicing & repair facilities
- * Pre-MOT checks/ MOTs arranged
- * Private hire taxi - local or long distance
- * Petrol/ Diesel/ Tyres/ Exhausts
- * Paraffin/ Coal/ Calor Gas
- * Car valeting

Personal attention for your car

01452 812240

Badminton

New Season

The new season for Painswick Badminton Club starts on Monday 5 September and currently there are a few vacancies. Those interested in joining the club for social Badminton and with some experience of the sport should please contact the secretary Hilary Simpson on 812771. The club meets on Monday and Thursday evenings at the Painswick Centre.

Juniors

Badminton for juniors starts on Thursday 8 September at the usual times. At this stage it is uncertain whether there will be any vacancies. However, any juniors interested in joining should contact the secretary.

Fridays

The Badminton sessions on Friday evenings start on 23 September at 8pm and are also open to non-members from the Parish who have played the sport before and may or may not be interested in joining the club in due course.

Tennis

Senior programme

As the summer league programme comes to an end, Painswick have had a successful season. League positions will be published in the October issue. The main club tournament continues with a very good number of entries in the various events. The various winter league competitions begin later this month.

Gloucestershire Juniors Closed Tournament

Painswick LTC's juniors achieved notable successes in the County's Closed Tournament at the East Gloucestershire Club in Cheltenham. The full results are as follows:

Under 18 Girls Singles. Runner-up: Annabel Sidwell

Under 18 Girls Doubles. Runners-up: Judith Thomas and Annabel Sidwell.

Under 16 Girls Doubles. Runners-up: Lucy Moir and Sarah Thomas.

Under 14 Girls Doubles. Winners: Alicia Barnett and Megan Horder. Runners-up: Miranda Elvidge and Alice Stuart Grumbar*.

Under 14 Girls Singles. Runner-up: Megan Horder.

Under 12 Girls Singles. Winner: Alicia Barnett. Runner-up: Megan Horder.

Under 16 Boys Doubles. Winners: James Barnett and Sam Horder.

Under 14 Boys Doubles. Winners William Unwin and Laurie Potter*.

Under 12 Boys Singles. Winner: Alex Duncliffe. Runner-up: Dan Omnes.

Under 12 Boys Doubles. Winners: Dan Omnes and Edward Monbat*.

Note: Asterisked names indicate non-Painswick Club members.

Sharon Hall

Congratulations to Sharon Hall who has qualified as a Lawn Tennis Association licenced coach.

Cricket

Painswick promoted

Painswick's first eleven play the final match of an outstanding league season today when they meet Kings Stanley at Broadham in the knowledge that they have won promotion for the second successive

MICHAEL NYE
Fine Woodworking

Beautiful furniture, kitchens, cupboards, doors, windows, gates musical instruments

YOUR IDEAS BECOME REALITY

Telephone 01452 814372

PC Repairs & Maintenance



Telephone:
01453 872921
Mobile:
07949 792501

Computers for all ages
Repairs & Maintenance

Local Friendly service. No call out charge
New systems built to your requirements
Upgrades, memory, harddrive, broadband
Problem solving, Virus removal
System backup, Internet setup
Lessons on getting the best from your pc
monitors printers, scanners, digital camera's,
quotes given...

Printer supplies Satellite Internet
www.pccomputerrepairs.co.uk

year. Last season they were promoted from the Readers Gloucestershire County Cricket League Division Three (1st XI) to Division Two and next year they will play in Division One (1st XI). Progress has not been as smooth for the second eleven and, with one match remaining against Stinchcombe, defeat by Gloucester Civil Service last Saturday (27 August) has put the Painswick team at risk of relegation from Division Three (2nd XI) to Division Four. However, there is considerable cause for optimism as a number of young players have started to play cricket at the senior level and are beginning to do well. Michael Goddard had a good knock against the Civil Service scoring 21 runs out of a total of 97.

Results (Saturday matches are all league games: *indicates not out).

Sat 30 July. Painswick 1st XI v Shurdington 1st XI cancelled (rain). Shurdington 2nd XI 135 Painswick 2nd XI 91.

Sat 6 Aug. Slaughters 1st XI 207-7 (I Hogg 5-41) Painswick 1st XI 208-0 (S Savides 124* D Boon 63*).

Sun 7 Aug. Painswick 256-4 (D Cave 111*) Cheltenham Civil Service 172-8.

Sat 13 Aug. Painswick 1st XI v Churchdown 1st XI. Painswick 2nd XI v St Stephens 2nd XI matches cancelled (rain).

Sat 20 Aug. Painswick 1st XI 227-7 (S Savides 72 W Neville 55) Chalford 1st XI 186 all out.

Sat 27 Aug. Witcombe 1st XI 177 all out Painswick 1st XI 180-5. Painswick 2nd XI 97 all out Gloucester Civil Service 2nd XI 99-4.

Churches Together Around Painswick (CTAP)

The annual match between Painswick CTAP and Stroud Churches Together took place at Broadham by kind permission of the Painswick Cricket Club on Sunday 14th August. The teams compete for the Ron Taylor Trophy which was retained by Stroud in a keenly contested game. The outstanding player for Painswick CTAP was Gloucestershire schoolboy player Ben Roberts who, under the competition rules, had to retire with his score at 25.

With so many Painswick CTAP players unavailable for the game because of holiday commitments, the organisers



Pat and Mair Daly at the CTAP match

are seeking to arrange next year's game before the start of the school holiday period.

Promises Auction

Painswick RFC and Sports Club are raising funds for improvements for the Broadham facilities following major work recently carried out on the driveway and entrance.

A promises auction has been organised for Friday 14th October at Broadham commencing 7.00pm. Promises already made include a holiday in Portugal, a 1% commission deal from Hamptons, stretch limo rides, beauty treatments and cases of wine. The evening will include a pig roast, and tickets and catalogues are available from Will Fair (01452 864961) and Gill Willoughby (01452 720052).

Rugby

The Rugby season gets underway today with Painswick's first and second fifteens away at Berry Hill. Painswick 1st XV who maintained their place in the Premier Division of the Gloucestershire League last season looking forward to a successful year under the leadership of skipper Geryn Jones.

Fixtures [(L) denotes league match, (M) Merit table).

Sat 3 Sep. Berry Hill United v Painswick 1st XV. Tetbury v Painswick United.

Tue 6 Sep. Painswick 1st XV v Gloucestershire Police 1st XV. Painswick United v Gloucestershire Police 2nd XV

Sat 10 Sep. (L) Painswick 1st XV v Aretians 1st XV. (M) Tewkesbury 2nd XV v Painswick United.

Sat 17 Sep. Powergen Junior Vase. Gloucester CS or Ross on Wye v Painswick 1st XV.

Painswick United v Drybrook 2nd XV.

Sat 24 Sep. (L) Chosen Hill 1st XV v Painswick 1st XV. (M) Painswick United v Bream 2nd XV.

Sat 1 Oct. (L) Painswick 1st XV v Old Richians 1st XV. (M) Painswick United v Widden OB 2nd XV.

Following in Father's footsteps!

Mandy Lee tells the Beacon that, whereas she has little sporting prowess, her two children have inherited husband Wayne's great love of all games.



Daughter Jessica ("Jess") who is a pupil at Archway School and formerly at The Croft recently represented Stroud District in an Under-15 Netball Tournament.

Son Jacob who is aged 10 years has progressed from an initial pool of 250 youngsters in a Gloucestershire County 10/11 years age group Association Football pool to a group of 40. Mandy says that she would be delighted if Jacob were to be selected for the county.

We didn't ask Wayne for his opinion but suspect that, as an oval ball man, he may have mixed feelings about Jacob's progress with the round ball!

Broadham Summer Ball

- a date for your diary - the next **Broadham Summer Ball** will be held on Friday 22nd June 2007.

Falcon win league but out-streaked at Lydney

The Falcon men have succeeded in winning the Cotswold Bowls League. This was our first venture into this league as we had formerly been playing in the Stroud League. We had been placed near the top for the best part of the season but needed to beat the current league champions Cirencester to have any chance of a win. This we did with the last wood of the last end determining the result - a real nail biter. The very last match of the season required us to take at least 6 points of the 10 from our game at Cam Mills. This we did in another nail biting finish. We hosted a match against a representative side with a presentation evening and meal on 16th August.

Our ladies won the section final against Cirencester in the inter club at Stroud on 13th August, and now go forward to the County play offs.

On 7th August we played a mixed friendly match against Lydney. After a break for tea, the game was interrupted by a stalker who ran across the green. In attempting to vault the surrounding hedge he became straddled across it. The ladies managed to avert their gaze and he managed to extricate himself making his way rather uncomfortably into the distance.


The event was repeated along the High Street later in the evening whilst both teams were enjoying a drink in the local British Legion club. Methinks I will have no trouble in getting volunteers for this match next year.

The season moves towards a close in mid September, when most of us play the indoor game. That will give us a chance to put our green to bed for a well-earned rest, and look forward to the spring when the whole cycle starts again. If you would like to join in the fun next year, don't hesitate to make contact.



David Ryland - Club Captain

COMPLETE LANDSCAPE FROM START TO FINISH



2 Firwood Drive,
Tuffley, Glos
GL4 0AB

Floribunda
ADRIAN HARRIS

01452 527647

Caroline Crawford Interiors

Interior Design
Soft Furnishings & Fabrics
Upholstery Wallpapers & Flooring
Paint & Paint Techniques
Lighting & Accessories

Opening times: By Appointment
Tel/Fax: 01452 813631
www.carolinecrawfordinteriors.co.uk
email: cci@carolinecrawfordinteriors.co.uk



RESTHAVEN

Resthaven, Pitchcombe, Nr Stroud,
Gloucestershire GL6 6LS.
Telephone: Painswick (01452) 812682

RESIDENTIAL/NURSING HOME
SHORT & LONG TERM &
RESPITE CARE
SINGLE ROOMS
PRIVATE CHAPEL
BEAUTIFUL SETTING OVERLOOKING
THE PAINSWICK VALLEY

Resthaven Home of Healing Ltd
Regd. Charity No. 235354

Glorious Gloucestershire Flower Festival

Remarkable exhibits were contributed to this festival by St.Mary's Flower Guild and also by arrangers from the Church of Our Lady and St.Thérèse but space permits the story behind just one of these. The Church of Our Lady and St Thérèse flower arrangers told us they had very similar experiences to St Mary's (except they didn't loose anything). They too had many compliments upon their efforts in the Denny Chapel and expressed their thanks in last month's Beacon.



Representing the parish of Painswick, St Mary's Flower Guild has made its own contribution to the Gloucester Cathedral Flower Festival and helped to raise in excess of £60,000 from the approximately 10,000 people who visited the magnificent floral displays. Anne Smith, Chairman of the Flower Guild and coordinator of the Painswick contribution, says it all started with an invitation in the Epilogue to all parishes in Gloucestershire to take part in the Festival. A meeting comprising two members from each parish followed in the Chapter House, where they were challenged to create a representation in flowers of "something that made Gloucestershire Glorious."

But what should Painswick represent? After much discussion about wool, yew trees and the arts and crafts movement, it was finally agreed to represent The Guild of Craftsmen. Anne made an approach to the Chairman of the Guild who was sure his members would be very honoured and would loan artefacts to display. The next step was to decide where in the Cathedral the Painswick display should be, not an easy task given the spatial constraints of the Cathedral and the needs of its users. After some discussion, the Quire was selected and they were briefed by the Head Verger on what was required so that the display would not get in the way of services. For example, nothing was to be above 3 feet high, so that visiting choirmasters could have full vision of the choir at all times. The dimensions were finally agreed: two sections, 14 feet 6 inches long by 3 feet 8 inches wide.

The design was based on the Painswick Stream, the source of Painswick's life, industry and wealth. Sadly lacking a financial sponsor, the Guild itself undertook fund raising events to secure the £1,200 needed. It also took a team of fourteen Guild ladies to build the display, not to mention a lorry to get everything to and from the Cathedral. Anne describes the process as hectic: "We were given very strict instructions. 8.00am was our arrival time, with ten minutes to unload. This meant we had to collect our selected flowers at 6.30am from Painswick Mill, where they had been conditioning, and carefully load them into three estate cars for the journey to Gloucester. And all had to be finished by 3.00pm ready for Evensong at 3.30pm."

Was it plain sailing from then on? "Not quite," says Anne, "We were told not to bring handbags, cameras etc, which might be at risk if left unattended. This was quite a shock: after all, we were working in the Cathedral! Having no pockets, I gave my car keys to someone, who carefully placed them inside her jacket, which somehow was thrown to the back of the choir stalls, from where my keys went missing. A quick dash to the car park established my car was still there, so a sentry was posted while we loaded up. And husbands rallied to collect us, now stranded, from the Cathedral!"

But it was all worth it in the end. On the Wednesday the Festival opened, the Dean thanked everyone and added that when he came into the Cathedral that morning and saw there were flowers and ladies and chaos everywhere, he said to himself: "Never again, never again will I allow a flower festival in my cathedral!" Then he thought to himself, I wonder if, after toiling for six days making the world, the Lord sat down on the seventh day and also said, "Never again, never again!"

Anne also expressed her thanks to everyone who made the venture possible: to those who supported the fund-raising events; to the husbands who supported by making things, fetching and carrying, and "just being there for us"; and to Alan Bullingham for all his help and kindness. "And finally," says Anne, "our thanks to The People of Painswick - to whom the display was dedicated - for all the kind remarks and letters received. It was so good to know you had enjoyed the festival, and in particular our display. Thank you!"

"Oh we do like to be beside the seaside .."



Just some of the Ashwell House residents and friends visiting Weston last month

Tim Mifflin
CARPENTER
PAINTER AND DECORATOR
BUILDING REPAIRS
 tim@mifflin.fsnet.co.uk
 Enquiries welcome
 Telephone: Painswick 813866

Party Event Planning
 01452 864996
 partyplates@hotmail.com
 The Red House Buckholt Road Cranhams Glos GL4 8HF

1st Party Plates

CHINA, SERVING FLATS
 CUTLERY
 GLASSWARE
 DIRTY RETURNS
 DELIVERY
 and COLLECTION

Paul A Morris
 City & Guilds
 General Builder * Plastering * Patios
 Dry Stone Walling
 Natural Stone Work A Speciality
 Hard Landscaping
 Windows, Doors & Conservatories

Telephone (01453) 752004
 Mobile 07818 087375
 paulmorris72@Hotmail.com

A message from Christ Church

To launch our Autumn programme of social events, we are planning a Coffee Morning with a BIG DIFFERENCE. The event will take place in the Church Hall on Saturday 17th September between 10.00am and 1.00 pm. We shall be providing hot or cold drinks together with the choice of some delicious cakes. Some local people have agreed to come along with examples of their individual crafts to display. There will be plenty of variety and items will be available for sale. The proceeds of the morning will go to our Charities of the Year.

A warm invitation is extended to all.

Val Phillips

Twenty Years On

This year the Age Concern Day Centre at Ashwell will have been in operation for 20 years. The Day Centre was started following the suggestion of Age Concern, and under their guidance a steering committee was formed. This consisted of the Rev. Bob Miles, vicar, Dr. Jim Hoyland and the Painswick Surgery, and after many meetings it was agreed to open a Day Centre every Wednesday. June Crane was our organiser and guided us through the ups and downs of those early days. We started on the 2nd October 1985 when there were between 16 and 18 members each week and a long waiting list. She handed over the co-ordination of the Day Centre to me in October 1995, and I have continued since. Now, as helpers 'are not so young' and fewer in number, we keep the number of members to approximately 12.

The success of the Day Centre has been due in no small way to the dedication of a loyal band of unpaid volunteer helpers and drivers, some of whom have been with the Day Centre from the outset.

We still meet on Wednesday in the lovely comfortable surroundings of the Ashwell House lounge. We still 'work out', be it in a sitting position, and we still finish with an enjoyable glass of sherry. Lunch is a leisurely affair with lots of conversation and laughter round the table. After lunch we have 'wait and see' - we make our own entertainment - a discussion, a game, an entertainer, or a speaker on a topic of interest

Our occasional outings are always popular - lunch at a pub or a garden centre, a trip on a train, a day on the canal, a strawberry tea in a helper's garden; and we have also had a lovely lunch at the home of one of our helper's daughter. All this for £4.00 per day!

If you feel you could spare two or three hours a morning, or lunch-time or afternoon, once a month and would like to join us as a helper at the Day Centre or driving members to and from the Day Centre, do pop in on a Wednesday and see us. The most important 'qualification' we ask for is a caring disposition, and a willingness to listen and talk with our members. The Day Centre is open from 10.00am to 3.00pm so if you are interested do come and see us.

Alternatively, if you would like to be one of our members, there will shortly be a vacancy - give me a call on 813503.

Pam Bailey

A 'Door to Door' Bus Service
01452 423598

Police and Community Consultative Meeting

The next PCCM meeting is to be held on Thursday 8th September at the Pavilion, Victory Park, Cainscross.

The meeting starts at 7.30pm and typically concludes soon after 9.00pm



This is a public meeting which everyone is invited to attend. It is an informal meeting and is your opportunity to meet with your local police officers and PCSOs and to bring to the direct attention of police officers serving in your area any matters of concern that you may have.

If you are unable to attend the meeting but would like to raise a particular matter, please let me know on 07776.190902 or catherine@completeofficeservices.co.uk

Catherine Roe

Cracking cancer

Our Garden Party, at 8 and 9 Upper Washwell, on 6th August was a huge success, a total of £1087.20 being raised.

Thanks to all those people who gave donations, cakes, gifts, bottles, clothes, and a huge "Thank you" to our loyal following of ladies and gents who support every venture.

The next date for your diary is the first Sunday in September, the 4th. Jazz and cream teas will be at the home of Lady Gibbs at Ewen Manor near Cirencester. Raffle tickets for this event can be bought from myself or Suzy Archer or 8/9 Upper Washwell.

The prizes include a meal for two and overnight at Cardynham House, a month's free tuition and a glider flight from Nymphsfield, champagne,

June Gardiner

"RICHMOND SUITES, LUXURY AS STANDARD"

Set in the beautifully landscaped grounds of Richmond Painswick, Richmond Suites offer luxury self contained accommodation allowing you to maintain your independence with help on hand when you need it.

RICHMOND PAINSWICK

Find out more about our refreshing approach to luxury senior living, call **01270 629 080**

PAINSWICK ELECTRICAL SERVICES
N.I.C.E.I.C. approved CONTRACTORS

SERVICE
INSTALLATIONS
REPAIRS

The Electrical Contractors Association

Mr M TURNER
01453 758342 and 01452 812659
Mobile: 07850 784899

DAVENPORT LANDSCAPES
ALL ASPECTS OF LANDSCAPE DESIGN & CONSTRUCTION

- NATURAL STONE WORK • PAVING
- BRICKWORK • DECKING • FENCING
- WATER FEATURES • TREE SURGERY
- TREE HOUSES • PLANTING & TURFING

H: 01452 813660 M: 07791 693 439
GREYSTON COTTAGE, PITCHCOMBE, STROUD, GLOUCESTERSHIRE, GL6 7DP.

LIGHTING AND MANAGEMENT PROJECT SERVICES

For all your lamp & lighting needs

COMMERCIAL, SECURITY, KITCHEN, BATHROOM GARDEN LIGHTING A SPECIALITY

Visit our showroom and browse at your leisure

Website: www.lampsevern.co.uk

For lighting advice contact David Maltby, Managing Director
Phone: 01453 768888 Fax: 01453 768595

E-mail: severnelectrical@lineone.net

FROMESIDE, NEWTONS WAY, STROUD,
GLOUCESTERSHIRE GL5 3JX

The Lighting Division of Severn Electrical Wholesale Ltd.

Designer babies – right or wrong?

The complex ethical issues which surround advances in the field of human genetics will be at the heart of a ground-breaking conference this autumn – organised by the Gloucestershire Federation - in Cheltenham Town Hall.

Some of the world's top medical ethics experts have agreed to speak at the event to develop a greater understanding of current controversial issues.

Advances in the field of human genetics mean would-be parents could choose particular characteristics for their unborn child – 'designer babies' - or, indeed, result in children being born with genetic 'cures' for an existing sibling's illness – so-called 'saviour siblings'.

The idea for the conference – *Ethical Aspects of the New Genetics* - was the brainchild of Gloucestershire WI member Maureen Bannatyne from Bussage near Stroud who has worked with the Institute of Medical Ethics and the internationally-respected Journal of Medical Ethics over many years.

The Gloucestershire Federation of Women's Institutes has received funding from the Wellcome Trust to support the conference – the first of its kind to bring key medical ethics issues to WI members.

Eminent speakers will include Professor David Bentley (Wellcome Trust Sanger Institute, Cambridge University) and Professor Margaret Brazier (Professor of Law, Manchester University) who will give an insight into the dilemmas facing the medical profession. The Conference will be co-chaired by past county Chairman, Barbara Lucas and Professor Raanan Gillon (Emeritus Professor Medical Ethics, Imperial College, London).

Gloucestershire Federation Chairman Gill Thomas said: "This is truly a first for a WI and is a great example of what the WI is all about – educating women to enable them to provide an effective role in the community, to expand their horizons and to develop and pass on important skills."

The event will take place on Friday 18th November and tickets, which are £10, are expected to sell out fast. For more information, contact the Gloucestershire Federation of Women's Institutes on 01452 523966, e-mail liz@gfwi.org.uk or visit www.gfwi.org.uk

Barbara Lucas Conference Organiser



Dedication above us

Did you see an air ambulance paramedic running into the Town Hall recently? If you did, it was Andy Grant on his way to talk to members of the Yew Trees WI about his work with the County Air Ambulance. He shocked us with slides of some horrendous accidents so we left slightly hesitant to drive, yet full of admiration and determination. Admiration for the skill and dedication of our County Air Ambulance's staff, where every second saved can mean a life saved or a disability avoided. Determination to help raise more money to keep this wonderful service in the air because we were astonished to learn it is *entirely* dependent on voluntary donations.

Our next meeting is on Tuesday 27th September at 7.30pm when Elgiva Tiptaft will demonstrate massage techniques during her talk on 'Aromatherapy – what is it and how can it help me?'. Visitors most welcome.

Celia Lougher

PIN Project

Thank you Catherine White, the Harpist for a beautiful concert on the 7th August in St. Johns Church, Sheepscombe, and a BIG thank you to every one who came and was so generous. The final figure banked is £600.00.

As I told those at the concert I am going to work for the **project in KwaZulu Natal**, South Africa, from the 3rd until the 19th September focusing on the children lead families.

I would like to invite you to join me for a cup of coffee in the Sheepscombe Village Hall on the 24th September from 10.00 – 12.00. I am bringing back with me the jewellery made by the Grandmothers, which might help with Christmas presents!

It would be lovely if we could have a cake stall so donations would be gratefully received.

Pat Chase 813196

PROPERTY REPORT for September by Murrays

At long last that promised interest rate reduction came in August, a quarter of 1%, down to 4.5%. Let's hope it isn't too little, too late, but it is at least a move in the right direction, giving a welcome breath of fresh air to the property market. There is nothing like a change to turn peoples heads and we are just beginning to see a new enthusiasm from buyers who have noticed that the market has levelled and there are now some really good properties out there at much more affordable prices. This coupled with most sellers realisation that their valuation of some months ago is no longer achievable, is actually bringing more deals together,

bucking the trend that sales are increasing across the board.

We too at Murrays have some new innovations going on, having recently introduced 'Just Cottages', a new division of The Murrays Group concentrating on a specialist section of the market covering cottages and smaller period homes, a new initiative with its own Internet web site and new style of advertising. This will also enable Murrays to concentrate even more on their core market of country and period houses as well as quality village houses and bungalows.

Since our last report there has been a fair amount of activity in and around Pain-

swick. Completed and exchanged include Silvercrest in Kingsmill Lane, Cambrai in Cheltenham Road, Stonechat next to The Falcon, Woodlands in Stamages, Highcroft at Sheepscombe and Hurst Cottage at Butt Green. There are some quality new instructions too: - a charming three bedroomed cottage in Sheepscombe, a modern family house in Lower Washwell, a lovely period cottage in Paradise, an impressive Georgian house as well as an appealing stone cottage in Slad, an affordable modern house in Canton Acre, a delightful detached cottage in Tibbiwell Gardens and an excellent individual four bedroomed house in Cranham.

Clive Murray

MURRAYS
INDEPENDENT ESTATE AGENTS

STROUD MINCHINHAMPTON
MAYFAIR LONDON

New Street PAINSWICK
01452 814655
www.murraysestateagents.co.uk

HAMPTONS
INTERNATIONAL

Estate Agents

A network of over 50 offices,
16 in London 9 International

The Old Chapel, Bisley Street, Painswick. 01452 812354
The ultimate property se@rch: www.hamptons.co.uk

SEPTEMBER

Tue	6	Dog Training Club (Tuesdays) Auditions for Painswick Players <i>Last Panto</i>	Christ Church Hall Painswick Centre	9.30 to 12.00noon 7.30pm
Wed	7	Probus: Atlantic Liners - Mr Fred Jones Women's Fellowship: Opening Service	Ostlers Room, Falcon Catholic church	10.00am 7.30pm
Thu	8	Jolly Stompers Line Dancing: Beginners Experienced beginners - Thursdays Tea Dances - Thursdays Christ Church Book Club <i>Harry Potter & The Philosopher's Stone</i> Police Consultative Committee (<i>see page 15</i>)	Town Hall Painswick Centre Christ Church	12.00 to 1.00pm 12.30 to 1.30pm 2.30 to 4.30pm 10.00am
Fri	9	Country Market with coffee available: Fridays Senior Circle: "Them bones" - Libby Graesser	Pavilion - Victory Park Town Hall Town Hall	7.30pm 10.00am 2.30pm
Sat	10	Gloucestershire Historic Churches Trust Sponsored Cycle Ride/Walk. Contact 812565 Horticultural Society: Annual Show Talk by Prof. Tim Gorrington - "Trade Justice" followed by Buffet Supper	Local Churches Painswick Centre Olivers, Cheltenham Rd.	9.00am to 5.00pm 3.00 to 5.00pm 6.30pm
Sun	11	Gloucester Choral Soc <i>Verdi's Requiem</i>	Gloucester Cathedral Coach Stamages Lane	7.30pm 6.00pm
Tue	13	YiPPies - Young Painswick Players kick-off meeting	Painswick Centre	7.00pm
Fri	16	Art classes resume	Painswick Centre	10.00am -12.30pm
Sat	17	Copy dateline for October to Editorial Team Coffee Morning with a difference Painswick Blues: Ben Waters	Christ Church hall Painswick Centre	10.00am - 1.00pm 8.00pm prompt
Sun	18	Jolly Stompers Line Dancing: Improvers - Sundays	Painswick Centre	7.30 to 8.30pm
Tue	20	Local History Society Meeting Jazz Evening no entry fee	Croft School Ostlers Room, Falcon	7.30pm 8.30pm
Wed	21	Probus: Eleanor - England's first Queen? - Jim Davies Coach to Bath Women's Fellowship AGM Parish Council Meeting	Ostlers Room, Falcon Stamages car park Christ Church Hall Town Hall	10.00am 10.00am 7.30pm 7.30pm
Thu	22	Diary deadline for October to Edwina Buttrey via. Beacon box please Painswick Players AGM - The drama continues... Music Appreciation Group: Intro night	Painswick Centre Cotswold Room	7.30pm 7.30pm
Fri	23	Senior Circle: The Bag Man - Hayden Gardener Art Classes	Town Hall Painswick Centre	2.30pm 10.00am - 12.30pm
Sun	25	Clipping Service: Guest speaker - Canon Hoyle	St Mary's Churchyard	3.00pm
Tue	27	Yew Trees WI - Aromatherapy	Town Hall	7.30pm
Fri	30	Wycliffe College Choir Art Classes	St. Mary's Church Painswick Centre	7.30pm 10.00am - 12.30pm

OCTOBER

Sat	1	October issue of The Painswick Beacon published		
Tue	4	Bird Club: Birds and wildlife encounters in the Arctic - Dr R Sale	Town Hall	7.30pm
Wed	5	Probus: Talk(s) by Member(s) Women's Fellowship "Memories of a Sheltered Housing Warden" - Margaret Say	Ostlers Room, Falcon Christ Church Hall	10.00am 7.30pm
Thu	6	Cotswold Care Support Group Meeting Music Appreciation: Celebration of the Sea	Ashwell House Cotswold Room	2.30pm 7.30pm
Fri	7	Senior Circle: Outing to Symonds Yat Art Classes Promises Auction - Rosie Morris (also 8th)	Painswick Centre Town Hall	10.00am - 12.30pm tba
Mon	10	Austerity Lunch: Hosts - St Mary's Church	Christ Church Hall	12.00noon to 1.15pm
Wed	12	Hort. Soc: A Day with Beth Chatto	Town Hall	7.30pm
Fri	14	Art Classes 'A Night to Remember' VE/VJ Dinner Dance	Painswick Centre Painswick Centre	10.00am - 12.30pm 7.30 -11.00pm
Sat	15	Painswick Blues: Stan Webb & the Chicken Shack	Painswick Centre	8.00pm
Mon	17	Austerity Lunch: Hosts - Country Markets	Christ Church Hall	12.00noon to 1.15pm



Wed	19	Probus: The Bristol Aeroplane Co. - Mr Walter Gibb Women's Fellowship: Thailand & Malaysia - Miss P Lamont	Ostlers Room, Falcon Christ Church Hall	10.00am 7.30pm
Thu	20	Music Appreciation: Henry Purcell	Cotswold Room	7.30pm
Fri	21	Senior Circle: Being a Magistrate - Kay Holmes	Town Hall	2.30pm
Mon	24	Art Classes Austerity Lunch: Hosts - Christian Aid	Painswick Centre Christ Church Hall	10.00am - 12.30pm 12.00noon to 1.15pm
Tue	25	Probus: Trip to Tyntesfield House, Wraxall Yew Trees WI: Glimpses of the history of Painswick - Cedric Nielsen	Town Hall	7.30pm
Thu	27	Day of Prayer for World Peace Bird Club: Birds & beast Sounds of the Night - R Cliffe	Catholic Church Town Hall	9.00am - 7.30pm 2.30pm
Fri	28	Voksresenije Vocal Ensemble from St Petersburg	St Mary's Church	7.30pm
Mon	31	Austerity Lunch: Hostess - Ann Leoni	Christ Church Hall	12.00noon to 1.15pm

NOVEMBER

Wed	2	Probus: Priors of Gloucester - Mr Philip Moss Women's Fellowship: Slimbridge Wildfowl Trust - Michael Teesdale	Ostlers Room, Falcon Christ Church Hall	10.00am 7.30pm
Thu	3	Cotswold Care Support Group Meeting Music Appreciation: The Art of Singing	Ashwell House Cotswold Room	2.30pm 7.30pm
Fri	4	Senior Circle: Mary Kingsley, Explorer Extraordinary - Fred Jones	Town Hall	2.30pm
Sat	5	Christian Aid Coffee Morning: Good company, good Coffee, Cakes & Candles etc. Painswick Blues: Simon 'Honeyboy' Hickling + DJs	Town Hall Painswick Centre	10.00am to 12.00noon 8.00pm
Mon	7	Austerity Lunch: Hosts - Christ Church	Christ Church Hall	12.00noon to 1.15pm
Thu	10	Music Appreciation: Outing - Colston Hall	Stamages car park	5.00pm
Fri	11	Senior Circle: Outing to Cribbs Causeway - Shopping		
Sat	12	Sue Ryder Care Coffee Morning	Town Hall	9.45am to 12noon
Mon	14	Austerity Lunch: Hosts - Andy & Arthur Lock CTAP AGM	Christ Church Hall Church Rooms	12.00noon to 1.15pm 7.30pm
Wed	16	Senior Circle Coffee Morning Probus: Selection & Training of Police Horses - Mr F S Knight Women's Fellowship: Deck the Halls - Judy Jackson	Town Hall Ostlers Room, Falcon Christ Church Hall	10.00am 7.30pm
Fri	18	Senior Circle AGM followed by Travelling with Peter & Janet Jenkins	Town Hall	2.30pm
Sat	19	Painswick Blues: Trafficker	Painswick Centre	8.00pm
Mon	21	Austerity Lunch: Hostess - June Tuffnell	Christ Church Hall	12.00noon to 1.15pm
Tue	22	Yew Trees WI – Annual Meeting	Town Hall	7.30pm
Sat	26	Annual Mission Bazaar	Church rooms	11.00am to 2.00pm
Mon	28	Austerity Lunch: Hostess - Margaret Hodge	Christ Church Hall	12.00noon to 1.15pm
Tue	29	Bird Club: Birds of Gloucestershire - Mike Robinson	Town Hall	7.30pm
Wed	30	Probus: Annual Dinner at Stroud Women's Fellowship: Members Evening	Christ Church Hall	7.30pm

DECEMBER

Thu	1	Music Appreciation: Frederick Delius	Cotswold Room	7.30pm
	1-3	Painswick Players: <i>Last Panto in Painswick/ Red Hot Cinders</i>	Painswick Centre	7.30pm
Fri	2	Senior Circle: Hand Bell Ringing - Steve Coleman	Town Hall	2.30pm
Sun	4	Magical Christmas Tour, with Peter Pan as the theme	Rococo Gardens	
Mon	5	Austerity Lunch: Hosts - Women's Fellowship	Christ Church Hall	12.00noon to 1.15pm
Sat	10	The Painswick Singers: Christmas Carol Concert - carols, readings, solos and choir items; retiring collection	Christ Church	7.30pm
Mon	12	Austerity Lunch: Hosts - Catholic Church	Christ Church Hall	12.00noon to 1.15pm
Tue	13	Yew Trees WI – Christmas Gathering	Town Hall	7.30pm
Wed	14	Probus: First descent of the Grand Canyon - Ken Ingamels Women's Fellowship: Christmas Lunch	Ostlers Room, Falcon Golf Club	10.00am 12.30pm
Thu	15	Music Appreciation: Christmas Social	Cotswold Room	7.30pm
Fri	16	Senior Circle: Christmas Lunch Painswick Blues: The Animals (<i>and 17th</i>)	Town Hall Painswick Centre:	8.00pm
Sun	18	Children's Christmas Entertainment "Lempen Puppets"	Painswick Centre	to be confirmed



PLANNING MATTERS

A summary of information received from the Parish Council.

NEW APPLICATIONS

SKINNERS MILL, STEPPING STONE LANE Erection of a storage barn
WHITEHALL COTTAGE, STAMAGES LANE Erection of extension and detached garage

MARY'S ACRE, STAMAGES LANE Works to lime tree

4 PULLENS ROAD Erection of a shed
MADISON HOUSE, NEW STREET Demolition of external additions. Installation of replacement windows and internal alterations including replacement utility/store room

PLOT 5, ST MARY'S MEAD Remedial works to horse chestnut and ash
GREENHOUSE COURT LODGE, GREENHOUSE LANE Erection of a conservatory
PINETOPS, LONGRIDGE, SHEEPS-COMBE Two storey extension with log store and open sided car port

LAND AT STROUD ROAD (CARE CENTRE) Extend care accommodation in roof space at level 3 to provide two care suites including minor alterations to fenestration/elevations

REVISED PLANS

QUIETWAYS, THE HIGHLANDS Erection of extensions Main changes: Omission of office window on ground floor north-east elevation. Confirmation that the office will be a home-working type study/office for sole use of applicant.

9 PULLENS ROAD Installation of dormer windows, demolition of single storey extension and erection of a new single storey extension Main changes: Reduce ridge height of extension and position of dormers reduced

CONSENT

STEANBRIDGE BARN, SLAD Erection of a flue for wood burning stove (heating)

LITTLE ACRE, KEMPS LANE Erection of a conservatory

JENKINS BARN, JENKINS LANE, EDGE Extension and alteration

Land at BROADHAM FIELDS, STROUD

Environmentally Sensitive
Tree Surgery
Sapling Mature & Veteran Tree Care



All Types of Tree Work Undertaken
Fully Insured : 20 years experience
Clare Overhill & John Rhodes
Landcare Services
01452 812709
6 Pullens Rd, Painswick

ROAD Construction of two additional tennis courts & erection of floodlighting
COLDSTREAM COTTAGE, SHEEPS-COMBE Part demolition of building. Restore single dwelling to four cottages
HOLCOMBE FOLLY Rebuilding of porch
EDGEMOOR INN, GLOUCESTER ROAD, EDGE Extension to restaurant & public house

GREENAWAY HOUSE, LOWER WASHWELL LANE Retrospective application to raise the ground level in order to extend parking area and patio and for the erection of a conservatory
WITHYHOLT, PAUL MEAD, EDGE Remove flat roof and replace with pitched on extension

MAPLE COTTAGE, KINGS MILL LANE Erection of a single garage and a conservatory

FORTY ACRES, WICK STREET Erection of extension to existing boarding cattery

REFUSAL

GLENDALE, VICARAGE STREET Retrospective application for installation of a combi-boiler

PLANS WITHDRAWN

DILLAY FARM, THE CAMP, SHEEPS-COMBE Creation of a lake

BYFIELD HOUSE, BISLEY STREET Alterations to existing annexe to form a second dwelling

DOVECOT COTTAGE, STEPPING STONE LANE Erection of a free standing greenhouse


APPEAL DISMISSED

CORVARA, COTSWOLD MEAD Outline application for the erection of one dwelling

NOTIFICATION OF APPEAL

EDGE HILL FARM HOUSE, EDGE Resubmission following refusal 04/1940/LBC for alterations to windows

PAINSWICK VILLAGE DENTAL SURGERY
Les Robinson B.D.S.
Private, Denplan



Appointments available 6 days a week and late evening Thursday

* Cosmetic Dentistry * Hygienist
* Personal Professional Service in Relaxed Atmosphere

TEL: 01452 814427

Hoyland House, Gyde Road, Painswick
Glos. GL6 6RD

MINI-ADS

Home Help - required for help to busy professional couple with light cleaning and ironing. Flexible daytime weekday hours. 6 to 10 hours - good rate for reliable person. Contact 01452.338881 daytime or 813774 evenings.

Fridge/Freezer, domestic size, wanted. Please phone 812444

Local Shooting wanted. Part time Painswick resident seeking local syndicate and/or rough shooting. Experienced and safe. Contact 02088.74 1179


Long reach hedge trimmer, preferably electric, wanted at reasonable price. 813101

MINI-ADS - non-commercial, maximum of 30 words - are 10p per word with a minimum payment of £1. Maximum of 14 accepted per month. Beacon subscribers have 25% discount. Please send money with mini-ad to Philip Oakley, Stoneleigh, Gloucester Street, GL6 6QN. If paying by cheque, please make it payable to The Painswick Beacon. Receipts are not forwarded unless requested.

Peter Barnfield
Painter and Decorator

20 Years experience
Internal & External work undertaken
Texturing Speciality in paper hanging

Free estimates given
01452.411182 or 07881 408380



CENTRELINE
ARCHITECTURAL SCULPTURE

www.centrelinestone.co.uk

STONEMASONS
STONECARVERS
SCULPTORS
CONSERVATION
CRAFTSMEN

✦
ADVISORS

Fairfax House, Vicarage Street, Painswick
Office: 01452 813892 Workshop: 01285 821074

Printed in Gloucester by



MAIL BOXES ETC.
MAKING BUSINESS EASIER: WORLDWIDE.

The Personal Column

Babies

Congratulations to JOHNNY GRANT and AIMI MEEN on the birth of their son 'Milo' on 20th July; a second grandson for John and Sue Grant, a first cousin for Kieran - and a new playmate for Boris and Doris,

and ALISON and ERIK LARSEN on the birth of their daughter Kaia Nadine in Calgary, Canada on 25th July, a grandchild for Janet and Richard Puckridge, and a first great-grandchild for Hilda Musty, and VICTORIA and GORDON SOUTAR on the birth of their daughter Lydia in July, a sister for Emily and Ben,

also to NICKY and TIM LEE on the birth of their son Alfie, a grandchild for Liz and Peter Davis.

Engagement

Congratulations to ANNA WELBOURN of Butt Green, Painswick and RICHARD QUARRY of Bristol, who announced their engagement on 21st August.

Weddings

Congratulation to PHILIPPA THOMSON and SIMON PEECH who were married at St.John's in Sheepscombe on 6th August and RICHARD ALLEN and SARAH MARSHALL, residents of Paradise, who were married at the Painswick Hotel on 12th August.

and NATASHA CRUSE and LEE JASPER who were married on 20th August at St.Mary's Painswick,

also FIONA GOARD and PHILIP LAURENCE who were married at St.James's in Pitchcombe on 20th August, and to JACKIE PONCIA and TIM BURT who were married at St.Mary's Painswick on 27th August.

Diamond wedding

Congratulations to DORRIE and BERNARD CHILD who will be celebrating their Diamond Wedding on 6th September.

Emerald wedding

Congratulations to GLADYS and DON HARDING who were married on 2nd September in Tetbury fifty-five years ago.

Welcome

A welcome to John and Margaret Lewis who moved into Barncroft in Blakewell Mead last week.

Get well soon

Our best wishes for a speedy recovery to JOY FRENCH and ELLA ADLAM.

Condolences

Our sincere sympathies to the families and friends of MARYLA RIDGWELL, BETTY BEALE, DOROTHY LANE and MAUREEN GRACE who have all died recently.

Personal messages

Albert and the family of the late **Queenie Grant** would like to thank family and friends who attended her funeral and for the many cards and letters of sympathy. We are also grateful for all the donations made to St.Mary's Church, Painswick.

Dorothy Lane, devoted wife of Edward Lane (Ted), passed away on 12th August after a long fight against cancer. She will be sadly missed by her husband and children Adrian, Sharon, Robert, Michele, Terena and her ten grandchildren.

Patrick Ridgwell and family would like to thank all friends and neighbours for the many expressions of sympathy and support received following the sudden death of Maryla. These were a great comfort to them.

Cynthia McLain wishes to thank the people of Painswick for the friendship and support she has received whilst living here, especially since the death of her husband Dermot last year.

NEXT ISSUE

Publication Date
SATURDAY 1st OCTOBER

Items for publication to Editorial Team using E-mail or the Beacon Post Box by
SATURDAY 17th SEPTEMBER

Mini Ads to the Treasurer, Philip Oakley, Stoneleigh, Gloucester Street, GL6 6QN
SUNDAY 18th SEPTEMBER

Business adverts to Dermot Cassidy at 1 Painswick Heights, Yokehouse Lane, Painswick GL6 7QS by

THURSDAY 15th SEPTEMBER
Diary items (only) to Edwina Buttrey, using the Beacon Box

THURSDAY 22nd SEPTEMBER

Letters and articles for publication are particularly welcome by Email to **painswickbeacon@supanet.com** or, alternatively, on computer disk.

Items to be published, and other mail for the Beacon Committee, can also be placed in the **Beacon Post Box** in New Street - next to the telephone kiosk. Please be sure to provide your name, address and a contact phone number.

The **Beacon's telephone number is 814500**, and our fax is **01452.814500**

Our web site is

www.painswickbeacon.org.uk

including **Beaconline** carrying the Painswick Beacon web edition

Address for general correspondence, *not items for publication,*

Stoneleigh, Gloucester Street GL6 6QN

Beacon Committee

Editorial team this month

Jack Burgess, Leslie Brotherton*, Dermot Cassidy, Carol Maxwell, and Terry Parker

*co-ordination and compiling

Personal Column: Rachel Taylor 813402

Diary: Edwina Buttrey 812565

Feature Writers:

Carol Maxwell 813387

Leslie Brotherton 813101

Jack Burgess 812167

Sport: Terry Parker 812191

Directory: Leslie Brotherton 813101

Business Advertising:

Dermot Cassidy 813737

Distribution: Gus Gaugain 812599

Treasurer: Philip Oakley 813936

Beacon subscribers

	July	July	Final
LATEST at 14th August	2005	2004	2004-05
New, or renewed after lapsing	114	101	103
Renewed from last year	470	506	518
Total - including postal	584	607	621
Painswick village - dwellings	1057		
Subscribing village households	397 = 37.7%		

The
**Anthony
Fisher**
Curtain Company

SPECIALIST CURTAIN MAKER

A very personal advice and making service for simple drapes or elaborate window dressings. For an appointment to see thousands of fabrics, everything from Sandersons to Coloroll, in your home or my office/showroom at:
41 Brunswick Road, Gloucester

Please ring Glos 309333 (day) or Painswick 812130 (evenings).

DAVID ARCHARD

In association with
Philip Ford & Son Ltd

FUNERAL DIRECTORS

AN INDEPENDENT FAMILY BUSINESS

Private Chapels of Rest
24 Hour Personal Service

**DIRLETON HOUSE
CAINSCROSS ROAD
STROUD**

**01452 812103
or 01453 763592**