

The Painswick Beacon

Volume 47 Number 9

December 2024



*Christmas Greetings
to all our Readers*

PARISH COUNCIL NEWS - from the meetings held on Wednesday 20th November

PLANNING COMMITTEE

Attendance

Cllr Andy Cash (Chairman), Cllr James Cross, Cllr Ann Daniels, Cllr Adrian Gyde, Cllr Sandra Hunkin, Cllr Ian Massey, Cllr Roey Parker

Questions from the Public

The applicant for S.24/1822/FUL Land At Yokehouse Lane (change of use of land from agricultural to equine facilitated learning and therapeutic horsemanship) gave detailed information on the application and answered several questions from the Committee

Apologies for absence

Apologies were accepted from Cllr. Rosie Nash

Planning Applications

The Committee agreed to support application S.24/1773/HHOLD 3 Cheltenham Road, subject to the SDC Environmental Health Officer being satisfied.

The Council also agreed to support applications S.24/1679/HHOLD 32 Ashwell, S.24/1822/FUL Land At Yokehouse Lane, S.24/2010/TCA Halfpenny Cottage, Tibbiwell Lane and S.24/2038/TPO Mill Pool House, Ticklestone Lane. For more details see the list of applications on p16 and the Stroud District Council website.

Date of Next Meeting

The next meeting will be on Wednesday

11th December at 7.00pm in Painswick Town Hall.

PARISH COUNCIL

Attendance

Cllr. Adrian Gyde (Chairman), Cllr. Andy Cash, Cllr James Cross, Cllr Ann Daniels, Cllr Selina Gibb, Cllr Sandra Hunkin, Cllr Ian Massey, Cllr Roey Parker

Questions from the Public

David Allott asked why the markings for a disabled parking bay opposite the Town Hall have not been reinstated. The Chairman replied that it was the responsibility of Gloucestershire Highways who have indicated that it will not be done until the next financial year.

Apologies for absence

Apologies accepted from Cllrs Gary Luff, Rosie Nash and County Cllr Sue Williams.

Reports

Reports from the County Councillor and District Councillors are available via the Parish council website.

Cemetery Lodge Restoration

The Council received a report from Cllr. Rosie Nash on the Cemetery Lodge Restoration Project and potential funding sources. They agreed to work towards an EPC rating of E.

Slavutych Working Group

The Council confirmed the appointment of Mr John Linsell as Parish Council

representative on the Slavutych Working Group.

Recommendations of the Finance and Personnel Committee

The Council agreed to increase hire fees for the Town Hall and Youth and Community Pavilion and Cemetery Fees by 5%. It also agreed increased rental fees for the two small business units. Grants totalling £1700 were approved to Stroud Citizens Advice, the County Air Ambulance, the Friday Club, Sheepscombe Lunch, Painswick Beacon Conservation and Painswick Community Support Group.

Budget and Precept

The Council approved the budget as recommended for 2025/26 along with a precept of £140,000, which is an increase of around 3% on the current year.

Date of Next Meeting

The next meeting will be held on Wednesday 11th December at 7.30pm in Painswick Town Hall.

Craftsmen Builders



Building & Plastering work
No job too small

Call George 07716 007326
Painswick 01452 814828

www.craftsmenbuilders.co.uk

THE PAINSWICK

"Shaken and Uncorked"

Tuesday is the new Friday at The Painswick -with 50% off selected cocktails and wines. We're still offering the most delicious afternoon tea in the Cotswolds....and the very best of local, seasonal dishes on our a la carte and tasting menus every day.

Quote 'LOVELOCAL25' when booking and show proof of address to enjoy 10% off food in 2025*

Painswick residents only. Tables up to 6. Other exclusions apply. Please check on booking.

THE PAINSWICK . KEMPS LANE . PAINSWICK . GLOUCESTERSHIRE . GL6 6YB . T | 01452 813688 . W | THEPAINSWICK.CO.UK

PAUL COOKE

COMPLETE GARDEN MAINTENANCE

MOWING HEDGE CUTTING
PATIOS PONDS



Free estimates
Phone 01452 813738
Mobile 07702 912392

Established over 20 years

FAMILY TREE FUNERAL COMPANY

No.1 Middle Street • Stroud GL5 1DZ

A family-run independent business
with a fresh approach to funerals



End-of-life planning and support

0 1 4 5 3 7 6 7 7 6 9

email: contact@familytreefunerals.co.uk

WWW.FAMILYTREEFUNERALS.CO.UK

CENTRELINE



STONEMASONRY
HISTORIC
BUILDING
REPAIRS
& ALTERATIONS

01452 813892 OR 07967 316038
WWW.CENTRELINESTONE.CO.UK

Fairfax House, Vicarage Street, Painswick, GL6 6XS

Graham Watts Carpenter and Joiner

Experience in all aspects of construction
from project management
to the final coat of paint

I am looking for small building/
carpentry projects in the local area

Please call 07850 312984
email alisdairw@gmail.com

Community Support

Winter Community Supper

Our next winter supper, in collaboration with Matt Reekiew-Black and Painswick Parish Council, will be held on Monday 3rd March at 6pm (arrival 5.30pm) in the Church Rooms. Thank you to our Parish Council for helping us to fund this supper. Matt is very kindly providing the following two course menu: Starter: Fresh baked focaccia with balsamic and olive oil and marinated olives
Main: Pork Normandy with mashed potato or vegetarian butternut squash and red onion wellington. Once again, we have capacity for 60 guests; we will provide sign up details in next month's Beacon.

Fareshare

Our initiative with Fareshare has been running since July 2023. Going forward, we have decided to work towards providing a fridge/freezer so that we are able to accept chilled and frozen food (as well as our current ambient food). This will depend on us successfully getting a grant and being offered a permanent slot with one of the local supermarkets. Until such time, we will be only able to accept food on an ad-hoc basis so please check social media posts and check the church porch whenever you are passing. Our continued thanks to Reverend Sarah for allowing us to use the church porch as the collection point.

Sherlock Supper

We were pleased to be able to contribute to the success of this first Children and Families event on the theme of Harvest by providing a family supper for 55 and support with PR. A big thank you to all our volunteers who helped with this by setting up, serving, clearing away and to those who donated fruit crumbles. We look forward to collaborating with St. Mary's Church in some of their future Sherlock suppers in the New Year.

Wednesday Pop-In

A reminder that Wednesday Pop-In is held at the Town Hall 10am-12 noon during the winter months.

Community Lunches

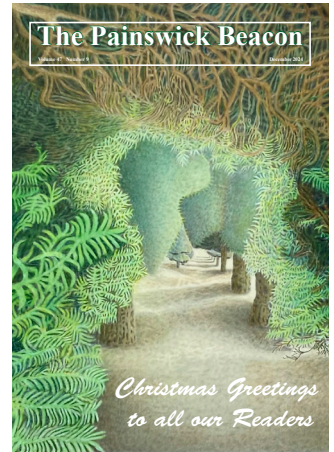
The Monday community lunches are going really well and are

Our Christmas front cover

This year's rather unconventional Christmas cover is based on the work of artist Greg Thatcher, who despite his Canadian nationality and US residence, must surely by now be considered an honorary Painswickian.

He and his wife Jan have been coming to Painswick almost every summer for over 30 years and Greg has become a familiar sight in the churchyard developing artwork inspired by the yew trees. The cover shows part of his work Yew Trees #76 in colour. Copies of this work and many others are available on Greg's website at <https://www.gregthatchergallery.com/>

Our thanks to Greg for his permission to use this beautiful image in a way for which it was never intended.



much appreciated by our villagers. Thank you to all the groups who are making this possible. Our last lunch before Christmas will be Monday 9th December at the Town Hall (12 noon to 1.15pm). They will recommence on the 6th January with the final lunch on 3rd March. Homemade vegetable soup, bread, cheese and tea/coffee will be provided by different community groups. Everyone is welcome, there is no charge as these are 'pay as you feel' events.

If you need help or support or have any questions, please call or email us (mobile: 07956203087, email: painswickcommunity@gmail.com). Our phone is manned 7 days a week 9am to 5pm.

Louise, Delyth, Hannah
On behalf of Painswick Community Support

LARWOOD GARDEN SERVICES

MOWING AND LAWN CARE
WEEDING, PRUNING AND PLANTING
HEDGE CUTTING AND CLEARANCE
FENCE AND SHED REPAIRS

TRUSTED LOCAL COMPANY, ESTABLISHED 1998.
FOR A FREE ESTIMATE CONTACT NEIL ON:

07816 496087

ENQUIRIES@LARWOOD.NET

Boundary changes for County Council

The Local Government Boundary Commission for England completed a review of Gloucestershire County Council boundaries earlier this year. Following feedback, their proposals affecting Painswick have been modified and the final recommendations are contained in an order that was laid in Parliament on 14th November. If there are no successful objections in Parliament the order will become law in time for it to apply for the County Council elections to be held in May 2025.

The Bisley and Painswick division will no longer include Upton St. Leonards, Whiteshill or Randwick, but will now include Bussage. Previous proposals to include part of the Stroud town area have been dropped. These changes apply only to the County Council elections and do not affect Parliamentary or District Council elections.

MANN Jewellers

Established 1741
8 GEORGE ST, STROUD

GOLD COINS WANTED

Sovereigns, Krugerrands & Bullion
bought for cash or instant bank transfer
We also buy jewellery & classic watches

Visit our Stroud shop
01453 764097
Mention this ad for a free appraisal

We are still an independent family-run business

P.L. ALLARD

BUILDING & ROOFING LTD.

Specialists in Period & Modern Property

Cotwold Stone Tiling	Interior Renovation
Natural Slate	Bathrooms & Kitchens
Woodstoves	Chimney Repairs
Guttering & Leadworks	General Building

T. 01452 814278 M. 07841 695705
www.allardbuilders.com p.allardbuilders@gmail.com

DALEY PILATES

Classical Pilates Classes in Painswick

Mat, Reformer and Open Studio Classes for all levels.
Mat Classes: Wed 10:30am, Thurs 5:45pm, & Fri 11:00am
Classes 1 hour at £10 Free Taster Class

Level 4 Backcare Practitioner accepting medical referrals
Online and On Demand Classes at www.daleypilates.co.uk

Contact: Jo on 07968 799741
or email info@daleypilates.co.uk

The road to 'Dames ask us' A journey from Saul towards Hill Paul



Members of Yew Trees WI were delighted to welcome a number of male guests to hear Robert Toseland's talk at their special Open Meeting in October. What a fascinating talk it was too! Robert's subject being Phase 1B of the Restoration of the Stroudwater Canal - the nearly 6 km section between Saul Junction and the new Ocean Railway Bridge in Stonehouse.

This phase encounters several huge engineering obstacles, including where the route meets the M5, the A38 and the Birmingham to Bristol railway line, an oil pipeline and a high pressure gas line; not to mention the 'Missing Mile' (where the canal was filled in during construction of M5). We were fascinated to learn of the ways these obstacles are being overcome and were mesmerised by a speeded-up video showing the rebuilding of a railway bridge at Stonehouse, constructed by Network Rail's contractors over 5 nights and 6 days in December 2021. Robert's description of the work involved was mind-blowing!

We were surprised and happy to learn about the varied work being done by the 7,000 volunteers of the Cotswolds Canal Trust. They carry out an enormous variety of tasks: from labouring to archiving, from working in the second hand book shop, helping on the boats and even delivering logs. Robert is the Programme Management Assistant to the Engineering Director of Stroudwater Navigation. His audience was left full of admiration for the dedication and skill for all those involved in this amazing undertaking.

Our Christmas meeting is on Tuesday 17 December at 7.30 pm in the Church Rooms when members will be treated to some festive tipples and be entertained by Yvonne Rawson demonstrating how to make jewellery.

Celia Lougher 812624

'A Man for All Seasons'

Would you like to join a group visit to the Everyman Theatre, Cheltenham to see an evening performance of 'A Man for All Seasons', on Thursday 13th February 2025 at 7.30 pm? I still have some tickets available for this group visit, arranged for members of Yew Trees WI, and their friends and family.



Robert Bolt's award-winning play brings to life 'the greatest, most powerful and dangerous figures who shaped English history'. Martin Shaw stars as Sir Thomas More, scholar, ambassador, Lord Chancellor and friend to King Henry VIII. When Henry demands a divorce from Catherine of Aragon, clearing the way for him to marry Anne Boleyn, the staunchly Catholic Thomas is forced to choose between his loyalty and his conscience.

We have good Stalls seats reserved, at the group discounted price of £41. If you would like to join this group visit, please contact me for further details.

Jane Rowe 813228 (answerphone)

(The picture shows Thomas More in a painting by Hans Holbein the Younger)

painswick osteopaths

Paul Stamp D.O. Helen Froggatt D.O.

Tel: 01452 301748

* Structural * Cranial Osteopathy
* Sports Injury * Neck, Shoulder, Hip, Knee
Parking Available

CBS

PAINSWICK BASED

INSURANCE BROKER

PERSONAL & COMMERCIAL COVER

Contact Adrian Gyde on
07770 881 695
www.cotswoldbroking.co.uk

BANCROFT LIVINGSTON

— BATHROOMS —

Bespoke bathroom design and installation

jake@blbathrooms.co.uk
www.blbathrooms.co.uk

Probus Club



On 31st October members were treated to a candid introduction to the world of finance and crypto-currencies such as Bitcoin and their future. Our speaker was Ralph Hazell, an experienced stock exchange broker and founder of TallyMoney, a novel unregulated bank whose deposits are used to buy only gold which may be sold and withdrawn at any time by depositors.

Ralph outlined the blockchain principles underlying crypto-currencies where buyers and sellers are matched by powerful computers. Prices are notoriously driven by sentiment. When the market shifts to its "greed" phase Bitcoin soars as speculators dismiss the risks of an asset that generates no real cash; in the seemingly inevitable subsequent "fear" phase, the price plummets as anxious sellers rush to sell amid bad news or adverse market conditions. Crypto-currencies are not immune from fraud, security failures, scams etc. Bitcoin was launched in 2009 at the bargain basement price of about one-tenth of one US cent. After the recent US election, the price soared to a new high of \$90,000. When will the next collapse start and end?

After a commendably brief AGM on 13th November the Club welcomed Steve Tilley from Slimbridge who at the tender age of 63 decided to seek an adventure while raising funds for Mind, a mental health charity. He planned to walk alone along the coastal paths of England and Wales, a distance of some 3500 miles. He described some of the places en route, the kind people he met, and moments of excitement as well as challenges. Steve wild-camped from dusk until dawn for much of his journey, carrying everything he needed. He lost 21lbs despite taking on 4-5000 calories daily, and walking typically 16 miles per day, 6 days per week. The talk was wonderfully illustrated with images of our glorious coast. He achieved his goal in just under 12 months in all weathers. So far Steve has raised nearly £14,000 plus gift aid worth £2232 for Mind, and is keen to generate more by giving talks to groups.

Henry Hall

Gardens & Interiors

www.cotswoldcontemporaryliving.com
Designed in Painswick 07832 351864

Christmas shopping? Painswick first

Shopping for Christmas can be both a challenge and a joy. Before taking off to shops further afield do look in Painswick first.

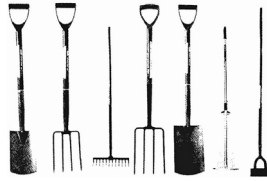
Longfield has a wonderful selection of children's toys and games, a plethora of lovely bric a brac items, puzzles etc and a really excellent range of charity cards. The art studios in the Painswick Centre are packed with very special art items and cards and Kate Rich's little shop in Tibbiwell is full of interesting and appealing potential gifts. The Thursday morning market, 8.00am-9.45am Painswick Centre car park, may surprise you with the gift possibilities on sale.

The Rococo Garden shop, the Pharmacy, the Fabric Shop, Rupert Aker's the Loovre in St Mary's Street (open most mornings in December), Painswick Centre Arts cafe and Premier are all worth a visit before going elsewhere. And just for Christmas, as well as the café, Wick Street Farm has a wonderful shop offering a wide range of lovely decorations, cards and gifts, and Christmas trees and wreaths. Support our local traders first.

Carol Maxwell

Painswick Gardening Club

In November Marion Stainton gave us a thought provoking talk on "Raised Beds and Vegetable growing". Why provoking? A lot of us in the Painswick valley, close to open farmland, struggle with a lot of "weeds", including couch grass, bindweed, horsehair and more. As we followed her, developing her new garden in the Forest of Dean, it dawned on us that raised beds reduced this problem: Marion started by clearing areas, covering them with weed exclusion material, or cardboard, and plenty of woodchip. Being higher, the beds would be easier for some of us older Members to manage. Marion stressed not making them more than a metre and a half wide. She gave us a lot of other hints and tips to reduce pest attacks, though she did have to resort to organic slug bait early this year.



Now, into December, we have our Xmas Party on Tuesday, 10th December, 7 for 7:30 start, with some mulled wine and games, in the Town Hall.

Joyce Barrus

The Painswick Pharmacy

The Painswick Pharmacy has been a central part of this community for over 170 years, and Adis and I wish for this to continue. Over the past few months, we have increased our offering, including a Photo Booth, dog range, The Lane Natural Skincare, produced by the wonderful Merrigan in Pitchcombe and more skin friendly skincare. We also stock more Eco friendly products, including Ecover and Seep, as well as an extensive food range and gorgeous handmade gifts. Furthermore, the brand new edition of the Painswick Chronicle, number 27, is now on sale. Our Pharmacist, Adis, has even curated his own blend of coffee beans called 'The Alchemist Blend'.

We still, of course, have all your Pharmacy Essentials, as well as offering The Pharmacy First Services, Flu Vaccinations, Private and Veterinary Prescriptions. We offer free home delivery and over the phone shopping and there is more to come in the New Year, so watch this space. I would also like to mention, that we have had a few questions regarding online Pharmacies, but we are not affiliated with any other Pharmacy, including those online. We are completely independent, owned by Adis and myself.

So pop in and see us and browse our store. Thank you to all of you for your ongoing support. Monday-Friday 9-1 and 2-6, Saturday 9-12, closed Sundays and Bank Holidays.

Adis, Penny and all the team
01452 812263

Info@painswickpharmacy.co.uk

The Post Office and the Fish Man

Pete's Fish will be on sale in the Town Hall car park every Friday 9.00-11.00, up to and including 20th December. In addition to his usual excellent selection of top quality fresh produce there will be specials such as a range of smoked salmon including whole sides, hot smoked salmon sides and portions, smoked trout fillets, fresh salmon, a range of prawns, crab and much more. Pete will take orders up until Friday 13th December and should you want something especially, he will do his best to get it for you. He will not be here for three weeks after 20th December.

The postal service, present in the Town Hall on Wednesday and Friday mornings, 9.30-11.00, must continue to be used by everyone if we are to retain it – and especially with the latest news of so many post office imminent closures. Use of our Town Hall service is particularly important during the Christmas season. Recommended last posting dates for the UK are Wednesday 18th December for second class and Friday 20th December for first class. Check on-line for overseas dates or with the postmaster in the Town Hall. Do make sure you avail yourself of this service - and note too that there are some excellent charity Christmas cards on sale on the post office table as well.

Carol Maxwell

HUNTER • PEARCE
D E C O R A T I N G

Reliable and Professional Service
Interior and exterior work
Paint and colour advice upon request

CONTACT

☎ 07733434773
✉ info@hunterpearce.co.uk

Dr Hauschka Organic Facials

Your friends will ask enviously if you've "had work done..."
But you'll smile secretively, knowing you look great, naturally.

Book yourself a Dr Hauschka treatment with **The Organic Beautician** and treat your skin to the visible difference

text 07961 224560
jane@theorganicbeautician.com

Mention this ad when booking for a free Cleansing Cream
Based in Pitchcombe since 2007

Trees, shrubs or hedges need attention?
Call for a free quote from the local experts.
01452 941922



Trusted with the Painswick Yews for over 35 Years

Trustpilot
★ ★ ★ ★ ★
Rated "Excellent"

TRUSTMARK
Government Endorsed Quality

Google
★ ★ ★ ★ ★
4.9 STAR
CUSTOMER RATING

Tree Maintenance Ltd

Peter Barnfield
Painter & Decorator

All Interior, Exterior + most DIY work
30 years experience



Tel: 01452 610199
Mob: 07881 408380
Email: Barnfield.peter2@gmail.com

News from St. Mary's

It's hardly surprising that we're all feeling the countdown to Christmas has already begun – not least because Revd Sarah and the St Marys team kicked off the Painswick Goodwill Event by reminding everyone of the true meaning of Christmas – albeit with sweets and songs flying through the air as they did! By the time you read this we will have launched the official period of watching and waiting for Jesus's birth – 'Advent' – with a brand-new Advent Carols Service on 1st December, followed by a Sherlock Supper for families of all shapes and sizes on the 5th.



On Sunday 8th at our Beacon Family Service we will be getting 'Christingly' – come along to share in sticky sweets, oranges and to learn what else it involves! Carol services are another chance to hear the Christmas good news story retold, sing your favourite carols, and to chat together over mince pies and other treats afterwards. On Sunday 22nd December there are Carols at Painswick at 6.00 pm.

Christmas Eve sees the return of our much loved, traditional Crib service at Painswick, starting at 4.00 pm. This is very much family-orientated but adults also enjoy it! Perhaps however our popular Christmas Midnight Communion in St Mary's starting at 11.15 pm, will be more your cup of tea?

Either way, make sure to come along to our Christmas Day Family Communion starting at 10.00am – plenty of time to pop the turkey in the oven before you leave to celebrate with us. We'd love to see you. Enjoy the wonderful time Christmas can be, and may you know God's blessing and presence throughout it, and into the coming year.

Mike Campbell

Which witches to watch for

What a start to November! On the first, John Putley flew in and gave a fascinating and at times frightening talk on "The History of Witches." Fear of witches pre-dates Roman times! He explained the many aspects of witchcraft throughout the centuries. Although it was thought that women were the primary cause of "witchcraft," men were also involved and suffered the same fate as women – a tortured, painful death.



Gloucestershire had several famous cases including, amongst others, the "Witches of Berkeley and Cinderford." At the conclusion of the talk members cautiously left the building, carefully checking before they ventured forth!

Then on the 15th the Club held its AGM. In the absence of the Vice Chair, Ann Williams, Jane Rowe kindly stepped in and chaired the meeting. Treasurer, Joyce Barrus, confirmed that income during the past 12 months had declined due to a slight decline in membership and subsidised transport. Appeals were also made for members to join the Committee in order to assist with the continued successful "running" of the Club. We all enjoyed our afternoon tea, particularly the wonderful slices of Birthday Cake generously supplied by Marguerite Treglown's family in celebration of Marguerite's birthday. The chorus of "Happy Birthday" resounded around the room! We finished the meeting with a picture quiz skilfully arranged by Joyce Barrus. The winning team scored 27 points out of a maximum of 30!!

We have a quiet December with only our Christmas Lunch, on the 13th at the Golf Club, arranged. Details of our next years programme will be published in the January issue of The Beacon. Although it's early the Club would like to wish all its members and Beacon readers a very happy Christmas and a good New Year.

Mike Kerton



WOW! What a year of ups and downs we've had at Wick-Flix this year! Our amazing sponsors continue to ensure that Wick-Flix is able to show films in the terrific surroundings of the Beacon Hall at the Painswick Centre and along with the support of many volunteers we have shown ten films to an appreciative audience all of whom just love the atmosphere that our team manages to create. Thank you all!

From Barbie at the start of the year to Fly Me To The Moon at the end we have successfully shown all the films ... no weather cancellations at all which is unusual over the years. We've coped with flies, 'tech' issues, defrosted ice creams, crammed full kitchens and dodgy heating, but our audience don't see the frantic paddling beneath the surface to make the experience great on the night. The audience numbers have varied quite wildly with a near full house, many in pink, for Barbie, which also contributed nearly £150 to Breast Cancer; our volunteer team greatly admired for their smartness for Breakfast at Tiffany's; and a slight concern that we would outnumber the audience for The Lesson in July - the Wimbledon Semi-final and a sunny evening was just too much competition.

Our wee team of five, Allyson, Rebecca, Ceri, Karen and Dawn work hard to make sure we're ready ahead of times but then our volunteers, over the year around 15 people in all, help put posters where people will see them, come along on the afternoon to help us get the hall set up and in the evening too - everyone contributes to ensuring our audience, large or small, has a great night out.

Wick Flix couldn't do it without all of our volunteers and we'd like to say Thank You, thank you, thank you. And so to the future ... we will hopefully continue to have supportive Sponsors and will ask them to join us as often as we can, we will always need the great volunteers and hopefully a few more too and with a bit of luck there will be a better choice of high quality films to lure people away from their fireside's or the TV starting with Wicked Little Letters in January.

Have a lovely Christmas and see you all in the New Year!

The Wick-Flix Team

Resthaven offers 24 hour residential and nursing care set amidst some of the finest countryside in Gloucestershire with panoramic views over the Painswick valley.

For more information please call **01452 812682** or, visit: www.lillianfaithfull.co.uk/resthaven

Resthaven is part of the charity Lillian Faithfull Care
Registered Charity No: 1122183

LILIAN FAITHFULL CARE

CLARICO EXTERIOR CLEANING

WINDOW CLEANING
High reaching water-fed pole system (suitable for delicate windows)

**SOFFITS, FASCIAS & CLADDING
GLASS VERANDAS
CONSERVATORIES & ALIKE
SOLAR (PV) PANELS**

£5 Million Public Liability Insurance

Husband & wife team, Dan & Lois

"We'll always notify you the day before we're due"

T: 07552 398638
claricoexteriorcleaning@gmail.com
www.claricoexteriorcleaning.co.uk



History via drones

At the November meeting of the Society the use of modern technology in the study of history was clearly demonstrated. Kate Peake is a film maker and, licensed by the Civil Aviation Authority, uses drones to provide very clear views of villages and land from above. The

resulting films are very precise in the details they show.

The Cotswold Way from Chipping Camden to Painswick was the subject of the varied films shown at the meeting. Broadway Tower shown from above is a spectacular sight. Next was the steam railway and on to the carefully restored and beautiful tiny Stanton village. The elegant 17th century manor house, 13th century barn and incredibly high fountain at Stanway were viewed from above. The beautiful Hailes Abbey ruins, now cared for by English Heritage, the abbey in Winchcombe and Sudeley Castle all featured in the film.

More recently the meteorite which landed in Winchcombe in 2021 is now in Winchcombe Museum. By contrast the next feature was the Stone Age barrow of Belas Knap. Then it was on to Cleeve Hill and across to Buckholt Wood with lovely aerial views of the many historic hilltops and ending at the now demolished Air Balloon. The final destination was Painswick Beacon. Throughout the film Kate provided a commentary explaining and describing interesting and relevant historic details and stories.

The next meeting will be on Tuesday 21st January when Alan Pilbeam will give a presentation on old paths of Gloucestershire. Croft School, 7.30pm. Everyone welcome.

Carol Maxwell

Managing your Money Our top three tips at Christmas

The festive season can be a financially challenging time, and borrowing money or using a credit card to fund Christmas can often seem like your only option. But there are steps you can take to keep your spending under control and avoid falling into debt.



1. Make a budget and stick to it. Remember that household bills may be higher during this period due to colder weather and spending more time indoors.
2. Deal with debts. If you've built up debt, please don't ignore bills or letters. Speak to the organisation you owe money to, as they may let you pay smaller amounts.
3. Check your eligibility for cost-of-living support. If your budget just doesn't add up and you need help to afford essentials like bills and food, see what cost of living support is available on the Citizens Advice website. If you make a claim for Pension Credit by 21st December, you might still receive the Winter Fuel Payment.

If you do find yourself struggling financially, Citizens Advice can help you understand what's available. See www.citizensadvice.org.uk or if you need further help please call us on 0808 800 0510 or 0808 800 0511 (Monday and Tuesday 10am to 4pm; Wednesday and Thursday 10am to 12.30pm).

Elizabeth Hall

Music on DVD



Continuing with music on DVD John Herbert, courtesy of Duccio Leoni, gave us opera excerpts (from ancient Rome's Terme di Caracalla) performed by Jose Carreras, Placido Domingo and of course Luciano Pavarotti. Wonderful to see the historical setting and the bonhomie of the three great rivals.

We also enjoyed in 1960s black and white an extraordinarily youthful Colin Davis conducting David Oistrakh in a Bach violin concerto accompanied by the newly formed English Chamber orchestra and there sitting far to the right, almost the only woman on the platform, sits the cellist and co-founder of this still thriving band, the magnificent human being and Holocaust survivor Anita Lasker-Wallfisch who celebrates her 100th birthday in 2025. She is also the mother of the celebrated cellist Raphael Wallfisch a favourite of recent Painswick Music society concerts. Finally a 2012 recording of Yefim Bronfman playing Brahms first piano concerto in the remarkable 1930s Cleveland Ohio Severance Hall with its architectural influences drawn from ancient Egypt and Graeco-Rome all wrapped up in Art Deco: could only be USA.

Later in the month former Chairman Howard Allen continued his excellent DVD presentations with his memory of a Friday night Proms all-Beethoven concert from 70 years ago. The late Bernard Haitink in 1970s performances conducted the Egmont Overture and the 4th Piano concerto (Vladimir Ashkenazy, who had jointly with John Ogdon won the 1962 Moscow Tchaikovsky prize). The almost all male LPO and smart audience made this a period piece in its own right. He rounded off with a stunning 7th Symphony conducted by Marris Jansons in 2018 from Suntory Hall, Tokyo. All three pieces Howard introduced with his comprehensive and entertaining notes.

Next meetings 2:30 PM in the Town Hall:-

- Dec. 12th Xmas Party with Quiz and 'bring a disc'
- Jan. 9th Tchaikovsky the romantic - Reg Wrathmell
- Jan 23rd Music for the Innocent ear - Jenny Buckland

Michael Grey

Additional copies of the Beacon
are available from the Premier shop or online where the Beacon can be seen in full colour at www.painswickbeacon.org.uk

FIVE VALLEYS
Friendly and Professional Local Team
Female and Male Cleaners Available

Regular and One Off House Cleaning
Office Cleaning - Regular and One Offs
End of Tenancy Cleaning
Holiday Let Cleaning
Deep Cleaning
Carpet Cleaning
Oven Cleaning
Window Cleaning

mob 07516 766689
www.fivevalleyscleaning.com
www.facebook.com/fivevalleysltd

BEACON BAR & KITCHEN

BREAKFAST (Wed - Sat)
LUNCH (Wed - Sat)
SUNDAY LUNCH
DINNER (Fri and Sat only)
FULLY LICENSED BAR
COFFEE and CAKE

Available to book for
WEDDINGS PARTIES WAKES
& GENERAL GATHERINGS

01452 812180
beacon-bar-kitchen@outlook.com
Painswick Golf Club, Golf Course Road,
Painswick, Stroud GL6 6TL

Moulin Rouge ball raises over £11,000

Support for Young Lives vs Cancer

The Painswick Ball on June 15th at Broadham, raised an incredible £11,135 for the #TeamDaisy project for Young Lives vs Cancer, which supported local teenager, Daisy Mayo and her family through her recent cancer diagnosis. Attended by 325 people, the ball was organised by a team of volunteers, who created the 'Moulin Rouge' theme, with an impressive illuminated windmill kindly designed and created by Gillian and Mark Hancock of Centreline Architectural Sculpture with wood supplies donated by Travis Perkins in Stroud.

In keeping with the Parisian theme, guests were entertained by an accordion player and street caricaturist in the stunning Boulevard setting, beautifully lit by local company, Core Lighting. Other entertainment included the brilliant local band, Halflight and an amusing photo booth with props.

A charity auction was one of the evening's highlights. Over 30 local businesses showed their support for the charity through sponsorship and donation of some amazing auction and raffle prizes. Huge thanks in particular to The Oak, Murrays Estate Agents, Goddards Garage, Richmond Villages, Martin & Co, Prime DCM and Cotswold Broking Services for their support.

Daisy Mayo was diagnosed with Acute Myeloid Leukaemia in May last year at the age of 14, which came as a complete shock to her, her family and friends. She has now completed intensive chemotherapy treatment in Bristol, having spent almost 8 months in hospital. Young Lives were a great support to her and her family from day one in hospital, helping with questions and addressing any concerns. Her social worker, Katie, supported her family as well when they were struggling to focus and helped with advice.

Daisy and her family were absolutely over the moon when the Painswick Ball committee chose #TeamDaisy and Young Lives vs Cancer to be their charity for the 2024 Painswick Ball. "We are so very grateful to the Ball committee for their support" says Daisy "and we hope that other young people starting their cancer journey will be able to receive the amazing support that I did. It really does make a difference". Tim Sadler of Young Lives vs Cancer, echoed her thanks. "We are incredibly grateful to everyone who made the Painswick Ball such a success and raised funds for Young Lives vs Cancer. This phenomenal fundraising will make such a huge difference to the lives of families with a child being treated for cancer. Thank you to the Painswick community." The next Painswick Ball will take place in 2026.

Victoria Compton, 07789 963886



Will Fair (Painswick Ball Committee), Victoria Newbold (PBC), Tim Sadler (Young Lives), Craig Mayo, Daisy Mayo, David Nottingham (PBC), Charlie Mayo, Helen Mayo

The mystery of Pans-Wyke

On Monday 9th December, at 7.15 pm, Professor Timothy Mowl will be sure to entertain at the Gloucestershire Gardens & Landscape Trust's pre- Christmas lecture, with a talk on 'The Great God Pan – Sylvan Deities and the Mystery of Pans-Wyke'. Venue: At St Luke's Hall, St Luke's Place, Cheltenham, GL53 7HP, with parking available. 7pm for a 7.15pm start. Tickets: members £5; guests, who are always welcome, £10 (no need to book). Refreshments available.

Jane Rowe

Stroud Rotary Community Awards

If a small grant (up to £500) would make a real difference to your community project, apply for a Stroud Rotary Community Award. Nothing is too small to be considered. For more details go to: www.stroudrotary.org.uk or email: community.awards@stroud.rotary@gmail.com



Closing Date for Applications is 6:00p.m. 31st January 2025


myhealthpal.co.uk

**Private Health Insurance
Broker in Painswick**


AVIVA


AXA


Bupa


Vitality


The Exeter


WPA



You May be Able to Change Insurer and
Maintain Cover for Pre-existing Conditions

01453 621250
George@myhealthpal.co.uk

Visit us this Autumn?

**AT THE FALCON
PAINSWICK**

Where locals
get 15% off* all food, drinks and rooms
Monday to Wednesday

WEDDINGS & EVENTS -
ROOMS - SEASONAL MENU -
ENGLISH WINES

Find out more at
thefalconpainswick.com
01452 222820
*T&Cs apply

Anthony's new book Verbal and visual joy combined

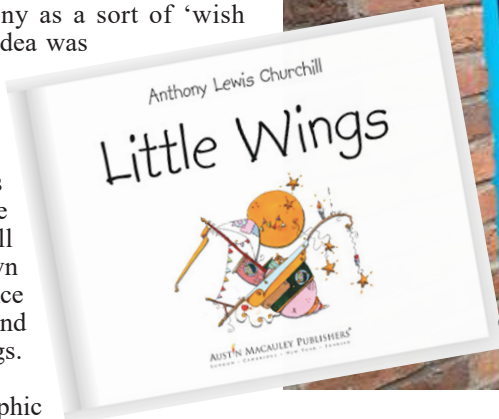
Working quietly away right here in Painswick is one of the most talented and skilled artists and story writers of present times. Anthony Lewis-Churchill has continued to produce amazing and very special works of art, often for children but always giving great pleasure to adults too. Recently he held an exhibition in the Yard Gallery in Stroud and it was a real success with so many who visited. It is good to report therefore that Anthony's new book, *Little Wings*, will be on sale from 6th December.

Little Wings is described by Anthony as a sort of 'wish upon a star' type picture book. The idea was formed from original sketches made whilst waiting for a friend outside a café in Paris and further inspired by the beautiful village of Clovelly in Devon. The exquisitely drawn pictures are intricate and fascinating, with the intention that in themselves they will inspire the reader to form his/her own story. Anthony understands that a balance of writing and pictures is important and this is certainly the case in *Little Wings*.

Anthony originally qualified as a graphic designer and this awakened the idea that and qualify as a primary teacher. His art work - which is inspiring, fascinating, creative, imaginative and skilfully executed - together with his writing is a wonderful combination of reality and imagination and, although essentially aimed at children, it has invariably been a hit with people of all ages. His pictures are intriguing. Opportunity, joy and beauty are his driving forces.

This is Anthony's second book, his first being *Lucy the Triceratops Who Thinks She's a Fairy*. This one, with the title *Little Wings*, available from 6th December, is a paperback book, published by Austin Macaulay Publishers. It is available in all bookshops and on-line. It is also, more locally, available direct from Anthony email lewisanthony108@gmail.com and in Painswick Centre Arts café. This is certainly a very special book created right here in Painswick by a very talented writer and artist.

Carol Maxwell



picture stories are a form of education in themselves. He later went on to train

Painswick Chronicle 27 - out now

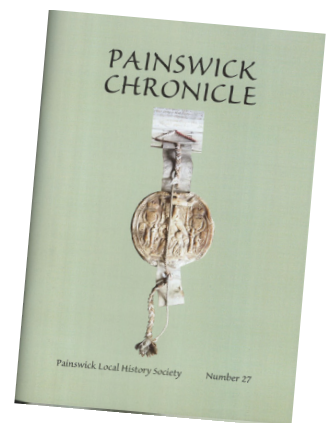
Several hitherto unexplored subjects are covered in the latest edition of Painswick's local history journal.

One well-known local family enjoyed a presence here for well over a century. Its various characters were involved in a range of activities locally and their interesting lives are described by the son of the last Painswick member. Another family, the Hyetts, gave The Plantation on the edge of Painswick to the community and this background together with its subsequent development are explained in another article.

Prinknash House is centuries old and the story of its various occupants, their activities and the consequent effects on the ways in which the building was changed many times are described in detail. Then there are Painswick's manorial lords - undoubtedly a truly rum lot. For nearly 900 years most of them were powerful, rich and many also unbearably cruel. Later they were dictatorial in their dealings with Painswick leading to a possibly unique Act of Parliament relating only to Painswick. Other articles relate to a Painswick school teacher in the 19th century and to a very unpleasant little scene outside a pub in Painswick, which resulted in a difficult court case.

Painswick Chronicle can be purchased in Painswick Pharmacy, at Premier, at the Painswick Centre café or from Carol Maxwell tel. 813387. Previous editions are also available.

Carol Maxwell



The cover of Chronicle 27 features the wax seal of James I on a decree of the Court of Chancery relating to Painswick



LIAM PHIPPS

General Builders & Stone Masons
'The complete building service'
 Extensions, Renovations, New Build
 Carpentry
 Roofing
 Kitchens

Liam: 07540 246133
liam.phipps@hotmail.com

ALL STONEMASONRY LTD
 EXPERTS IN STONE

Drystone Walling; new and restoration
 Stone repointing; including lime mortar
 Mullion Windows Restored
 Any stone repaired or replaced
 Local masons with 45 years experience

01452 728949
alan@allstonemasons.com
TEXT / CALL 07823 506499

PAINSWICK
 HOME & GARDEN

Renovation & Maintenance

- Lawns, hedges, fences, borders
- Landscaping, paving, stonework
- Bespoke-built log stores & bin stores
- Decorating, home repairs & lots more!

 Find Us on Facebook
 Call: 07532 111114
www.painswickhomeandgarden.com

Success for Juniper Hill campaigners

To our great delight, we can announce that Juniper Hill Field has been purchased by Gloucestershire Wildlife Trust thanks to a generous anonymous donation. This means the remarkable 20 acre hilltop field with its beautiful orchids, skylarks and stunning views has been saved for future generations. This was the dream of the campaign first launched in the Painswick Beacon in May 2023 after the field, which adjoins Gloucestershire Wildlife Trust's Frith Wood reserve, was bought by Woodlands.co.uk, a national company which specialises in buying and then sub-dividing and reselling rural land for leisure purposes. A few local residents first became concerned when large machinery arrived to construct a track and hardstanding parking places on the field, and then when several lines of fencing were installed during the skylark nesting season.

The field is limestone grassland which is an important feature of the Cotswold Area of Outstanding Natural Beauty (AONB), and one that has become increasingly scarce, with only 1.5% remaining. Although Juniper Hill Field was once used for arable crops, it had undergone a successful reversion to grassland over the last 30 years with public funding to establish grazing and permissive footpaths; up until two years ago local graziers had carefully managed cattle on the site and the result has been spectacular, with a rich diversity of grasses and wildflowers, including 5 species of orchid. It is also an important site for butterflies and other invertebrates, as well as skylarks, meadow pipits and other bird species.

Our hope now is that the field under the management of Gloucestershire Wildlife Trust will continue to go from strength to strength as a haven for wildlife. Light grazing by cattle will help insect life to flourish, wild flowers to spread while the development of scrub along field boundaries will integrate it into the neighbouring two Sites of Special Scientific Interest at Frith Wood and Juniper Hill to ensure a remarkable mosaic of different habitats for wildlife. In the wider area, the field will be a key link between the commons of Stroud and the National Trust's land at Ebworth and beyond to Cranham Common, ensuring the kind of connectivity necessary for wildlife to adapt to climate crisis.



Emma Hutchins of Gloucestershire Wildlife Trust with campaigners Sue, Hanny, Joy, Madeleine and Annie

The site occupies the highest point on Wick Ridge, with views over to Rudge Hill, Hudding Knoll, Painswick Beacon and Selsley Common. Many local residents and visitors have enjoyed visiting Juniper Hill Field for many years, and will be familiar with the view over the valley towards the Severn Estuary, sometimes with a lovely sunset.

After publicity in the Beacon, the campaign won the support of several councillors on Stroud District Council, the Council for the Protection of Rural England, Gloucestershire Wildlife Trust, the Green Party and the National Trust; it received coverage both locally and nationally while local residents, broadcaster Mary Portas and actor Josh O'Connor, became patrons. Many were alarmed that such an important site could be divided into plots with no plans for wildlife and no requirement to seek consent from any of the statutory bodies. The only access to the field was via a bridleway through Frith Wood and the fear was that prospective owners would drive along this stunning part of the Laurie Lee Trail. This felt wrong. The campaign gathered well over a thousand signatories on a petition to Woodlands.co.uk, and nearly a hundred attended a 'coffee morning' on the field in October 2023. We can't thank supporters enough.

A small team of local residents, the Friends of Juniper Hill Field, remain deeply committed to the future of this area, and will work to support Gloucestershire Wildlife Trust as it develops its plans. We want to encourage people's knowledge and love of this remarkable place and plans next year include guided walks, as well as a public meeting to discuss footpaths, and training for volunteers to do surveys of the wildlife. If you are interested in getting involved, please get in touch via our website and sign up for news of events. www.savejuniperhillfield.co.uk

Steve Ferguson and Madeleine Bunting

Poppy Appeal

The Royal British Legion Poppy Appeal raised at least £775.67 this year. There was a 'scan to donate' option as well this year so the final total may be more than that. Thanks very much to the shops and businesses who had the poppy boxes and collecting tins.

Fiona Chapman. Volunteer Poppy Appeal Organiser



Simon Gyde
Carpenter and Joiner
 City & Guilds
Purpose Made Joinery
Restoration Woodwork
General Building Services
 07768.173726 simongyde@yahoo.co.uk

 **Kate Rich** 
 walks Painswick's
'Diamond Dogs'
 Stimulating Dog Walks
 that include the best 'sniffy places' to
 delight your dog
 Also: Bespoke Dog Sitting Service
Tel: 07785 562616
www.katerich.co.uk

Cherry Tree Glamping



Four beautiful and fully-equipped lodges each with a hot tub on the veranda.
 Adjacent 2 acre campsite with 19 electric hook-up points and huge communal area.

Available individually or either site exclusively for weddings, special birthdays or family get togethers. Showers and toilets.

Please call Bev: 07717 721213
www.cherrytreeglamping.co.uk

An amazing challenge for a worthy cause

Joseph Worsley is currently on an amazing journey and for an exceptional cause. Growing up in Painswick, attending The Croft School and later studying history and politics at LSE, he then went into management with the NHS and also some work for 'Malaria no more'. He is now on a gap year and undertaking the project of a lifetime.

Joe set off from Painswick on 25th May with the original intention of cycling to Istanbul. Inspired by the achievements of cycling record holders and also by his own experiences of cycling during Covid lockdown, he did cover just about every country in Europe. On reaching Georgia he decided to take a plane to his next destination rather than cycle through Russia in the current circumstances – '... which I felt might be irresponsible' he says. Already he had decided to go further.

From Kazakhstan through several more countries, and Joe is now in China, with his final intended destination being Bali. The experience of encountering cultures and countries previously unknown is proving invaluable. He has been following the ancient Silk Road routes from Istanbul through central Asia into China and now plans to cycle on through Vietnam and all countries en route to Indonesia. On a typical day he cycles for seven hours and by the end of the complete journey he estimates that he will have covered 15,000 miles. With another 5,000 miles to go he hopes to be in Bali by mid-February.



I asked Joe whether there had been any problems to which he replied: 'Many problems but that's all part of the fun! Just about everything on my bike has broken at some point or another, along with much of the rest of my kit; I feel like I've picked up loads of new skills and am constantly mending things, but I won't be sorry if I never have to put my DIY wheel truing skills into practice again, I've done far more of that than I could've anticipated. Other problems have included a couple of bouts of illness (stomach bug in Italy and food poisoning a couple of times in Central Asia), and some very challenging roads, especially through the Pamir Highway in Tajikistan which took me to an altitude of 4600m above sea level. There's also the daily problems such as finding a place to put the tent each night or planning out how to carry enough food and water through remote stretches such as the Tarin basin at the edge of the Gobi desert.'



So what is Joe's motivating factor, apart from the challenge of course? Essentially it is to raise funds for one charity, the Alzheimer's Society. He explains that it is a cause close to his heart since his grandmother has dementia and whilst spending time away from her he is keen to still be helping Alzheimers sufferers and their families. It is, he says, 'a great cause to support.' Joseph's original target, which he has already exceeded, was £1000. This, he says, 'is fantastic! I'll now aim for £2,500.'

Joe will return to Painswick at the end of this epic cycling journey. What then lies ahead? With degrees from LSE and this current amazing experience he would like very much to work for a charity or organisation which combines '... working towards a cause I'm passionate about with further opportunity to travel.' Aged 27, this young man obviously has so much to offer for the benefit of society and is without doubt a very worthy Painswick resident.

His charitable cause is really important, with so many families affected. His cycling journey is an amazing undertaking and his cause certainly worth supporting. You can donate via the justgiving website: www.justgiving.com/page/jwcycleseast In fact, why don't we in Painswick take it beyond his £2,500 target?

Carol Maxwell

Computer or Tablet Problem?

Computer repairs & upgrades
6 month health check ups
Plain speaking tuition
Internet security
Remote support
Wi-Fi solutions
Easy backup
Hints & tips
Advice
Help

Google
★★★★★
5 star rating

Matt Hughes
07740 167318
www.pcprop.com
£45 ph Est.2003



**ADC PRIVATE HIRE
(TAXI)**
Andy Cox

**01453 755707
07966 235775**

All Destinations
www.taxis-stroud.co.uk
adcprivatehire@btconnect.com

BRIGHT & BEAUTIFUL
A BEAUTIFULLY CLEAN HOME AND A BRIGHTER YOU

HOLISTIC HOUSEKEEPING
PURE ECO FRIENDLY PRODUCTS
STRICT SECURITY PROCEDURES
TRUSTED TEAMS OF UNIFORMED STAFF

REGULAR CLEANS
HOLIDAY LETTING CLEANING
DEEP CLEANS

01452 401171
gloucester@brightandbeautifulhome.com

Beacon distribution

Over the last few issues the Beacon has published appeals for volunteers to take on the vital task of getting copies out to our team of deliverers - 45 'foot soldiers' who tread the streets posting copies through your letter boxes each month. You may have noticed a tone that was becoming increasingly concerned, if not desperate.

So we are delighted to confirm that the future delivery of your Beacon is assured. We are most grateful to so many of you who offered your support and our special thanks go to the team of eight volunteers, headed by Sue Delaney, who have now taken on the task of sorting and distributing the Beacon each month.

Our thanks to Celia, David and Royden

The need for a new team stemmed from the 'retirement' of Celia Lougher, David Allott and Royden Hales, who between them have managed distribution of the Beacon for almost 20 years, month in, month out, since taking the role on in December 2005. On one occasion when the A46 was closed, making access by car to some distributors impossible, they even resorted to distribution by wheelbarrow! We owe them a huge debt of thanks for all their work over so many years.

Jottings

Thatching of hay and straw ricks

Straw and hay was collected in places where it could be stored, preferably on slightly higher, drained ground. These areas were enclosed, fenced off areas known as rick yards. Stacks were constructed with ridges and sloping sides to keep water out until they could be covered or thatched. We had smallish farms around here so we had to make our own thatching straw rather than buying thatching reed or readymade straw at great cost.

When the thrashing machine has thrashed the ears of corn the straw comes out the back end of the drum. It can either go into a stationary baler, or, by lowering the "knotters", collect in longer sheaves, called boltions. These are made into separate ricks, to be used for bedding down your animals. You then take a few of these boltions, open them up and take out the long stems of straw to make thatching straw. The rest of the bolton then goes for bedding. You soak the thatching straw in a tank of water for a few hours, take them out and drag the straw down a piece of wood with some nails sticking out. This process pulls out any broken bits and leaves the straw ready for thatching.

With the ladder leaning against the rick, you started thatching across the rick. Having put the first layer down, you move across the rick according to how safely you can reach sideways, putting the next layer a third to half of the layer, above. Working up the rick to the top, you roll the ladder over and start again at the bottom. This thatching straw is secured with speakes. I was sent out in late summer to cut hazel to make speakes, up to an inch thick and about 18 inches long. We probably needed about 100 per rick. They were pushed into the rick about a metre apart and string was tied between them to stop the wind blowing the thatch away on each layer. As you used the straw the thatch could be used for bedding and the speakes used for kindling. As time went on canvas sheeting was used to cover the ricks then came the big steel barns to store straw in.

Martin Slinger



Even if it has to be by wheelbarrow, the Beacon will get through! David Allott and Royden Hales on Beacon service in June 2010.

Naughty Elf Trail 19th-22nd December

Following on from the huge success of the last 3 years, the Naughty Elf Trail is back again in the village. The cheeky Elves will be up to all kinds of mischief in window displays around the village to delight children and adults alike.

This year we have an Elf Pit stop on Saturday 21st December between 10-2pm at the Church Rooms, with mulled wine, hot chocolate, sweet treats and festive games. There will be a map to help find the elves and with thanks to sponsorship from many local businesses, each map purchased brings a chance to win prizes. These include a John Lewis voucher, free entry to Rococo Garden for a family of four and a £50 voucher at The Falcon. Maps cost £5 and can be purchased at <https://friends-of-the-croft-school.sumupstore.com/>

The event is being run by The Friends Of The Croft School, a registered charity who work hard to raise much needed funds for our wonderful village school. All info can be found on our Facebook page <https://www.facebook.com/Friendsofthecroft/>

Kate Beatty

Mindfulness Based Stress Reduction courses

8-week small group or individual courses

Turnstone House Greenhouse Lane

Simon Robey MBAcC, MRCHM

for more information contact

turnstone2021@gmail.com

07799 742498

www.painswickacupuncture.com

FRASER HALL



MINI DIGGER WORK: ALL TYPES
GARDEN MAINTENANCE
DRIVEWAYS & FOOTINGS
AGRICULTURAL FENCING
TREE SURGERY
SEASONED FIREWOOD

M: 07766 132 903

FULLY INSURED
BASED IN HARESCOMBE

PAINSWICK CURTAINS & BLINDS

Vicki Moore

Beautiful, quality
curtains, blinds and soft furnishings
Custom made by hand

01452 810707

07810 646714

vickimoore@gmail.com

Christmas Festivities ... and gift membership?

Why not give the gift of Field Club Membership to a friend this Christmas? At



**COTTESWOLD
NATURALISTS'**
— FIELD CLUB —

just £25/ annum for an individual or £40 for two people at the same address, membership provides FREE access to all our bi-monthly lectures until May 2025 and the opportunity to attend members only trips and excursions throughout the year.

Come and join us for a glass of wine and some nibbles on 17th December at 2.30pm, when we welcome Class Act to Box Village Hall. Class Act are four musicians who play an eclectic mix of jazz favourites, blues, Latin, hot club and tunes from the Great American song book. They will discuss the basic elements of jazz while playing examples from their own repertoire. With comments and questions from the audience invited, this should be an informative and fun afternoon. Lectures are FREE for Members, all welcome (£5 charge for visitors). For more information contact Susan Bennett on 07767014957 or just drop in.

Our first event of 2025 will be our popular New Year lunch which will be held at the George Inn, Frocester on Wednesday 15th January. We hope to see plenty of our members there, with their close family and friends. Menu and booking information available from Peter Cornish (01453 823286).

We are progressing well with plans for excursions next year including a day trip to Salisbury, an opportunity to tour the recently opened Mansion House (Bathurst Estate), and trips to the incinerator at Javelin Park and Hopewell Colliery in the Forest of Dean, with plans in development for a walking tour of Roman Cirencester and trips to Ledbury and Stourbridge.

For more information about membership please contact Clare Woodman by email CNFCMembershipSec@outlook.com Further information about the Club and its activities can be found on the CNFC website www.cotsnatsfield.club
Sylvia May, Email: cnfcsecretary1@gmail.com

Paul Morris Builder — Limited —

Extensions - Renovations
New Builds
Kitchens & Bathrooms
Landscaping
Electrics - Plumbing

01452 814524



07818 087375

paulmorrisbuilderltd@gmail.com

www.paulmorrisgeneralbuilding.co.uk

A Frustrating Summer

This year has been incredibly frustrating, battling with government organisations on several fronts. Having run my own business for years, where success depends on efficiency, I am appalled at how slowly the wheels of bureaucracy can sometimes turn.

Our felling licence expired at the end of last May and I thought it would be a simple task to have another issued, given that conditions of use would be unaltered.



Wrong! The Forestry Commission now consider felling trees, without replanting, the work of the devil, even when it is done to enhance an endangered habitat. To cut a very long story short, we have had to submit a full environmental impact assessment, which has just been submitted. We have been assured the new licence will follow "as soon as possible." I am not holding my breath!

In parallel, I have been trying to secure funding for footpath repairs on the Beacon. This has been fraught with frustration because of the complex legal status of the site. However, the good news is that the golf club are on the cusp of signing a five-year conservation enhancement scheme (CES). This includes regular payments to help manage the course for wildlife, money to repair two sections of track on the course and an annual pot of money, to draw on, to finance the cost hiring our newly purchased splitter, the cost of a tractor to pull it and a contractor to drive it.

One of the sections to be repaired is where the track runs through the ramparts, to the south of the trig point. This gets very wet and muddy, but the water cannot be drained where it wants to go as this is directly onto the 5th green. The solution is to drill a borehole and create a vertical soak away. Enter another saga, with Historic England (HE), to obtain permission to do this on the hill fort. We have had to employ an archaeologist to check (understandable) there were no artifacts under where the hole will be drilled. This has just been done and all that was found was an iron age marathon wrapper! We can now go ahead with the repair.

Finally, a big thank you to all volunteers for their hard work and festive wishes for a lovely Christmas to all.

Paul Baxter

All-round benefits

The benefits to be gained by exercise are well known. When exercise is designed to enhance both mental and physical health the resulting benefits are multiplied, says Elizabeth Welch, a yoga teacher and mental health nurse. The combination of her skills in both these areas amount to yoga classes of immense satisfaction and feelings of well-being for those participating.

Elizabeth came to live in Painswick earlier this year and takes a yoga class on Tuesday evenings in the Town Hall. Her students note that they invariably feel a sense of calm and a relaxed physical state by the end of her classes, beneficial to mental and emotional health.



A graduate in psychology, Elizabeth has herself practised yoga for some years and qualified as a teacher two years ago. The Tuesday class, 7.00pm in the Town Hall, is open to all. She also has an on-line session on Wednesday evenings and another specialising in breathing/meditation on Friday afternoons. The website is www.emjyoga.co.uk or you can contact her by email elizabeth@emjyoga.co.uk or tel. 07860 682962.

The recommendation of Elizabeth's current class participants combined with her own very focussed aim to strengthen her students' mental and physical health makes these classes very special.

Carol Maxwell

Painswick Sports

assembled by John Barrus



Painswick Tennis Club

At the recent Tennis Club AGM the annual awards presentation took place. Regi Ristic-North was awarded Player of the year Paul Moir, Member of the year Hattie Bew, Most improved player

Junior Awards:

Most Improved Boy, Raffael Ohashi.
Most Improved Girl, Grace Leaver
Peter Bolton Cup, Jasper Armitage

In November the club organised a successful progressive supper evening attended by 39 diners visiting 9 homes kindly hosted by members.

Left: Regi Ristic-North and Paul Moir

Right: Hattie Bew

Below: A lone cross-country skier traverses the 3rd fairway



Painswick Golf Club

The Poppy Day competition was held on Thursday 7th November with 27 players in nine teams. The competition was won by the team of Ian Broderick, Martyn Brown & Andy Beard. £270 was raised for the Royal British Legion.

At the seniors section AGM the captain for 2025 is Martyn Brown and vice captain Paul Walsh. Golf games have been hindered during the last few weeks with low cloud, flooded greens, and the recent snow (see picture).

The Beacon Bar and Kitchen is still available for Christmas bookings. Tel 01452 812180 or book on line. beaconbarandkitchen.co.uk



St Michaels BISTRO

Lunches: Wed - Sun 12.00 - 15.00
Evenings: Tue - Sun 18.30 - 22.00

tel: 01452 203306
07877 282 446

marinpetre1967@gmail.com

Take-aways available

Julian Telling Garden Services

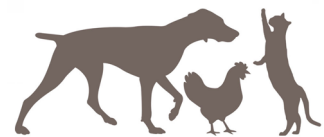
New Service - Green Waste Collection

We supply 1 bulk (tonne) bag
You fill it, then call for collection - £20.00

Tree Felling, Pruning & Maintenance
Fencing & Fence Repairs, Lawn Cutting,
Strimming, Turfing, Weed Control, Hedge
Cutting & Shaping, General Garden Clearance
Gutters & Patios Cleaned, Powerwashing

07895 224863

Juliantelling@yahoo.co.uk



Cotswold Animal Services

Home environment doggy day care and boarding based in Painswick.

Group socialisation dog walks or 1-1's.
Equine care and cat sitting in your home.

+44 (0) 7814 955975

www.cotswoldanimalservices.co.uk

Landcare Services

Environmentally Sensitive

Tree Surgery

All Types of Tree Work Undertaken
Contact Zeb or Clare on



Phone 01452 812709
or 07969 918121

Clareoverhill@phonecoop.coop

WWW.Treesandlandcare.co.uk



Professional Ironing,
Dry cleaning, Laundry,
Repairs/Alterations
& Shoe repairs

COLLECTION & DELIVERY AVAILABLE

Tel: 07952006820
www.ironeasy.biz

Exedra Nursery

Specialists in perennials

David Austin Roses

Climbers, alpines, shrubs & herbs

Peat free compost

Gardening accessories & gift vouchers

PAINSWICK ROCOCO GARDEN

OPEN TUES - SUN 10 - 4

07487 537026

The enchanted garden by night

This December, experience the magic of the Enchanted Garden by Night, a festive transformation of the Rococo Garden into a twinkling wonderland. As evening falls, the garden comes alive with glittering lights, mystical creatures, and surprises around every corner. Follow winding paths through subtly-lit woodlands, where you'll meet graceful fairies, playful boggarts, majestic unicorns, and welcoming dragons with glowing breath. The quiet magic of the garden is accompanied by whispers of wildlife and the soothing sound of a stream. Tickets cost £17 for adults and £9 for children aged 4 and above, while children under 4 enter free. Well-behaved dogs on short leads are welcome. Sensory-sensitive sessions ensure accessibility for all, but numbers are limited, so booking early is advised.

Painswick Rococo Garden



Enhance your visit with seasonal delights, including mulled wine, hot chocolate, and delicious sausages from Portway Farm Shop, with vegan and gluten-free options available. Don't miss the shop's locally-sourced gifts, featuring items crafted from the garden's produce. With its enchanting ambience and festive treats, the Enchanted Garden by Night promises a magical experience for the whole family this Christmas season. Book here: www.rococogarden.org.uk/news/the-enchanted-garden-by-night-2024

Plus! Start the festive season with a new family tradition at Rococo Garden! Choose your perfect Christmas tree and wreath from Exedra Nursery's premium selection, sourced from a family farm with over 50 years of experience. Enjoy festive family fun, from children's activities to seasonal breakfasts and hot drinks by the fire pit. Indulge in mulled wine and treats from our Christmas menu while soaking up the holiday cheer. Discover unique, locally-made gifts in our shop, perfect for friends and family. Please note: This event takes place in the welcome area and up to the view point. The Garden reopens at 4pm for Enchanted Garden by Night.

Marta Gardner

Chairman sought

Painswick Rococo Garden Trust, the charitable trust which conserves and operates the Rococo Garden as an historic site open to the public, is seeking a volunteer with excellent people skills and a strategic mindset to lead the Board as its Chair.

Details of the role and how to apply can be found here: <https://www.rococogarden.org.uk/news/board-chair-vacancy/>

As an existing volunteer and trustee, I would be happy to talk to anyone who is interested and would like more information.

*Chris Scott 07876 337069
chris.scott@rococogarden.org.uk*

Library Book Club

The next meeting of the Library Book Club is on 9th December to discuss *Butter*, the international bestseller by Asako Yuzuki. She is a Japanese author who has been nominated for numerous awards and has subsequently won several. Her novels have been adapted for television, radio and film.



Following that, we are meeting on 13th January to discuss *In Ascension* by Martin MacInnes. Both meetings are from 1.30 - 2.30pm. New members are always welcome to join us.

For further information contact by email painswick.librarybookclub@gmail.com
Pat Andrew

Library News

Christmas and New Year Closing

The Library will be closed between Christmas and New Year, as in previous years. The last opening before the holidays will be on Monday 23rd December (2.30 – 4.30pm), and we will re-open on Friday January 3rd at 10.30am. Normal hours after that.



New Books have arrived!

Another set of new books, totalling a massive 69 titles this time has been selected and bought by the purchasing team. Some examples are listed below and the full list is on the website, painswickcommunitylibrary.org.uk, or in the Library. None of these books can be lent out to other libraries, (for six months) so if you don't find the book you want to read on the various new books displays, please ask at the desk for it to be reserved for you.

Adult Fiction

Tracey Chevalier	The Glassmaker
Ann Cleeves	The Dark Wives
Elly Griffiths	The Man in Black ...
Ian Rankin	Midnight and Blue
Ruth Saberton	The Letter
Asako Yuzuki	Butter

Sarah Rainsford	Goodbye to Russia
Salman Rushdie	Knife
U.A. Fanthorpe	Selected poems

Junior

Emily Gravett	Bothered by Bugs
Howard Pearlstein	The Shy Book
Alex Scheffler	The Christmas Tree
Rachel Boden	Christmas Tales
Emma Thompson	Jim's Spectacular Xmas

Ian Cridland

Proudly independent, caring vets for
Cheltenham and surrounding areas

01242 781381 Home visits
available on request

www.regencyvets.com

Your local area electrician

MJBoon

Electrical Ltd

☎ 07773 626241

✉ matt@mjboonelectrical.co.uk

🌐 www.mjboonelectrical.co.uk

- Free estimates and advice
- All aspects of electrical work undertaken

PLANNING MATTERS

Information received from the Parish Council

NEW APPLICATIONS

S.24/1822/FUL Land At Yokehouse Lane
Change of use of land from agricultural to equine facilitated learning and therapeutic horsemanship. Alterations to existing access and erection of a field shelter, stable, office, store and WC.

S.24/2010/TCA Halfpenny Cottage, Tibbiwell Lane

Apple tree - thin & reduce crown of the tree by a third, back to previous points.

CONSENT

S.24/1593/HHOLD Woodside Cottage, Catswood Lane

Demolition of outbuilding and erection of a single storey side extension.

S.24/1612/HHOLD Bramfield, Edge Road
Erection of garden store to side of dwelling.

S.24/1672/HHOLD Hanley House, Far End, Sheepscombe. - Partial demolition of the existing dwelling and the erection of a replacement two-storey extension

S.24/1770/TCA Court House, Hale Lane G2- Two Beech trees growing into one canopy to be inner crown thinned by 20%. Cobra brace to be situated within the canopy. T1- Walnut to be felled

S.24/1833/DEM Highfold Farm House
Demolish redundant former cow shed and lean-to.

WITHDRAWN

S.24/1486/HHOLD Pincot Cottage, Pincot Lane

Erection of a two storey rear and side extension, porch, installation of sewage treatment plant & associated works.

S.24/1737/HHOLD Macs Cottage, Kings Mill Lane - Erection of a first floor extension and external raised terrace area.

REFUSED

S.24/1664/HHOLD Little Orchard, Paul Mead, Edge - Partial demolition of roof and erection of a first floor extension. Erection of a single storey extension, enlarge existing balcony and installation of cladding

S.24/1747/HHOLD Bentley Cottage, Vicarage Street

Erection of a two storey side extension and single storey front extension

S.24/1773/HHOLD 3 Cheltenham Road
Installation of replacement windows and removal of chimney.

S.24/1679/HHOLD 32 Ashwell
Erection of front porch.

Christmas Tree Recycling

Don't forget that Longfield will once again be organising a Christmas Tree Recycling service, including at Painswick's Rococo Garden. For more details see <https://longfield.org.uk/our-event/christmas-tree-recycling-2024-25/>

Property Report

Rake Hill at The Highlands, available through Murrays at £1.75 million, is a substantial detached and extended family home with 4 beds in the main house and an attached 2 bed annexe. Four Winds on Churchill Way (Hamptons, £730,000) has 4 beds and is also detached, with scope to tailor the accommodation.

At Longridge, Steepways, another 4 bed house, coming to the market for the first time in 40 years, has a 3/4 acre plot and great views (Hamptons, £1.25 million). And in Cranham there is a choice of three new properties on the market - Hillcrest at the Knoll (Murrays, £1 million), Fox Cottage, also at the Knoll (Murrays, £1.195 million) and Crofters on Cranham Common (Hamptons, £675,000).

Back in Painswick, Hamptons point out that a first time buyer buying 2 Court Cottages in Butt Green at £375,000 would save £3750 in Stamp Duty if they could complete the purchase before 1st April.

In general the market in Painswick remains quiet with relatively few new properties on the market, but some properties are still selling. In recent weeks, 1 Prospect Terrace, 1 Canton Acre and Spindlewood in Sheepscombe have all gone under offer though Murrays, as have both Beacon Lodge and Station House in Cheltenham Road, Flat 7 Hyett Orchard, Frith Way at Longridge and Hillfield in Edge, through Hamptons. Contracts have exchanged on the Old Fleece shop / commercial space, while the sales of Cotswold View at The Highlands and the Old Chapel in Slad have completed.

Our local agents, Hamptons and Murrays, wish you a very merry Christmas and are both participating in the local festivities, with Murrays one of the lead sponsors of the Goodwill Evening and Hamptons sponsoring the Naughty Elf Trail.

Handmade In The return to Painswick

We are thrilled to announce that Handmade In are returning home to Painswick after a brief sojourn at The Malthouse Collective. Whilst retaining our presence at The Malthouse we are now also returning to the site of our summer pop-up at The Old Fleece on Bisley Street.



Handmade In is the Cotswold home of goods made by artists and artisans from across the region. We hold a curated stock of art, pottery, textiles, jewellery and much more. We will also be stocking locally produced artisan food, a collection of books in collaboration with Stroud Book Shop and plants by Exedra Nursery. There will be a selection of seasonal products including Christmas wreaths from Bespoke Flower Company, Christmas trees, cards, decorations and of course lots of gift ideas.

We will be open Wednesday to Saturday from 11am-4pm. Do call in to say hello and have a look around our lovely little shop. It will be a pleasure to see you!

Anne-Marie Randall



Mobile service in the comfort of home

Medical pedicure.

Hard skin removal.

Corn removal.

Re shaping and thinning of nails.

Diabetic foot care and more!

Don't struggle alone.

Book now and let me help.

Call: Lizzy 07387 822770

WITH YOU
FOR EVERY
STEP

Sales 01452 812354

Lettings 01242 263559

painswick@hamptons.co.uk

Hamptons

THE HOME EXPERTS



Leading property agents for the
Stroud Valleys and Severn Vale

We pride ourselves on our personable and professional approach, offering new and innovative ways to market your home

Contact James or Richard Murray

Offices in Painswick,
Stroud, Minchinhampton
and Mayfair, London



Painswick office: 01452 814655
www.murraysestateagents.co.uk

Regular Village Activities. Please contact Vicky Aspinnall on cvasp.26@gmail.com

Mondays	Gentle pilates. Info from Heidi 07970 262538	Painswick Centre	8.45 - 9.45am
	Improvers pilates. Info from Heidi 07970 262538	Painswick Centre	9.50 - 10.50am
	Beginners/improvers pilates. Info from Heidi 07970 262538	Painswick Centre	10.55 - 11.55am
	Modern dance classes. Julie ballyhoochalford@gmail.com	Painswick Centre	from 3.45pm
	Community Choir. Contact sophie@sophiesterckx.co.uk	Painswick Centre	7.00 - 8.30pm
	Short Mat Bowls. All equipment provided. 2.00/session	Town Hall	2.00 - 4.00pm
	Mindful Meditation with Kate. kate-beatty.co.uk/07793126234	Painswick Centre	12.30 - 1.00pm
	Painswick Singers . Contact Jean Jones 01452 813545.	Richmond	7.30pm
	Paradise Art Studio classes. takepart@paradise-house.org.uk	Paradise House	6.30 - 8.30pm
	Painswick Bootcamp. Details contact Becca Meadows 01452 451505 or info@beccameadownutrition.co.uk	Broadham Field Rugby Pitch	7.30 - 8.30pm
Tuesdays	Drawing Classes. Info from Hannah Dyson at www.hannahjdyson.co.uk or dyson_hannah@hotmail.com	Church Rooms	10.00 - 12.00pm
	Zumba with Martina 07891 194396	Painswick Centre	9.45 - 10.45am
	Painswick Art Club £40/term. Contact Joyce Barrus on 01452 812942	Church Rooms	9.30 - 12.30pm
	Rococo Sprites. See www.rococogarden.org.uk	Rococo Garden	9.45 am
Wednesdays	Strength and Balance class for the over 60s. Contact Trish Tenn on 07956 4666617 or tennpatricia@gmail.com	Painswick Centre	10.00 - 11.00am
	Painswick Bridge Club. Contact Peter Sibley on 812126 or Margaret Wilson on 812305	Church Rooms	6.45pm
	Table tennis. Contact David Harris on 07453 027766.	Painswick Centre	7.30 - 9.00pm
	Yoga with Kate. www.kate-beatty.co.uk/07793126234	Painswick Centre	7.30 - 8.45pm
	Classical Pilates Mat Classes Jo on 07968 799741 or info@daleypilates.co.uk	Painswick Centre	10.30 - 11.30am
	Strength and Conditioning Circuits. www.lovelifeladies.co.uk	Painswick Centre	12.30 - 1.30pm
	After school art classes. Term time only. classes@painswickcentre.com .	Painswick Centre	3.45 - 5.15pm
Thursdays	Warm Wednesdays. A warm space to meet up for coffee and a chat. All welcome. Contact Sandra Glass on 814186	Town Hall	10.00 12.00pm
	Morning Market	Painswick Centre	8.15 - 9.45am
	St Mary's Mums, Contact 07833 727701. Term time only	Painswick Centre	9.15 - 10.45am
	Nurturing yoga. Contact Kim on yoginikim@icloud.com	Painswick Centre	9.30 - 11.00am
	Vinyasa Yoga. Contact Kim on yoginikim@cloud.com	Painswick Centre	11.15 - 12.45am
	Tai chi. Contact Joe on 07960 753782	Painswick Centre	1.30 - 2.30pm
	Dog Training Club. Contact Fiona Chapman on 01452 812462 or fiona.chapman123@btinternet.com	Painswick Rugby Club	9.30 - 12.30pm
	Qi Gong Classic Exercise - jeffdocherty@yahoo.com	Town Hall	9.30 - 10.30am
	Classical Pilates Mat Classes. Contact Jo on 07968 799741 or info@daleypilates.co.uk	Town Hall	5.45 - 6.45pm
	Takeaway Food Night	Painswick Centre	5.00 - 8.00pm
Fridays	Yoga for Backs. Contact Kim on yoginikim@icloud.com	Painswick Centre	9.30 - 11.00am
	Ballet with Claire Tracey. Contact BalletClaire@outlook.com	Church Rooms	9.30 - 10.30 am
	Painswick Community Hub Café. All welcome	Town Hall	10.00 - 11.30am
	Church Choir Practice. Cgswain@btinternet.com or 01453 822998	St Mary's Church	5.30 - 6.30pm
	Classical Pilates Mat Classes. Contact Jo on 07968 799741 or info@daleypilates.co.uk	Church Rooms	11.00 - 12.00pm
	Painswick Baby and Toddler Group - Term time only	Youth Pavillion	9.30 - 11.30am
Sundays	Mass	Catholic Church	8.30am
	Quaker Meeting for Worship	Meeting House	10.30am
	Aikido www.gloucestershireaikido.club .	Painswick Centre	8.30 - 11.00am



Village Diary

Please let me know your club and society dates for the diary
on cvasp.26@gmail.com

December			
Fri	6	Rococo Garden Carol Service	St Mary's Church 6.30pm
Sat	7	Painswick Beacon published	
	7	Enchanted Garden at Night. Selected evenings. Book in advance on rococogarden.org.uk . Until Jan 4th	Rococo Garden 4.00 - 7.00pm
Sun	8	Family Worship: Christingle all age worship	St Mary's Church 11.00am
Mon	9	Library Book Club	Library 1.30 - 2.30pm
	9	Community lunch - St Mary's Church	Town Hall 12.00 - 1.15pm
Tues	10	Gardening club: Christmas Party	Town Hall 7.30pm
	10	Morning Prayer	St Mary's Church 9.00am
Wed	11	Painswick Probus: Christmas Dinner	Painswick Centre 7.00 for 7.30pm
	11	Holy Communion	St Mary's Church 12.00pm
Thurs	12	The Arts Society: Three Kings - the real story - Tony Rawlins	Painswick Centre 10.00 for 10.45am
	12	Music Appreciation Group: Christmas Party AGM and quiz	Town Hall 2.30pm
Fri	13	PBCG work group	TBC 9.00 - 1.00pm
	13	Friday Club: Christmas lunch. Pre-book tel. 810878	Painswick Golf Club 12.30pm
Sun	15	Holy Communion	St Mary's Church 11.00am
Tues	17	Come and sing carols and Tea	Church Rooms 2.30pm
	17	Yew Trees WI: Jewellery Demonstration - Yvonne Rawson. Mulled wine and nibbles	Church Rooms 7.00 for 7.30pm
	17	Cotteswold Naturalists: Class Act Jazz: Enq 07767 014957	Box Village Hall 2.30pm
	17	Morning Prayer	St Mary's Church 9.00am
Wed	18	Croft School Carol Service	St Mary's Church 6.00pm
Thurs	19	Naughty Elf Trail begins until Dec 22nd	Around the village All day
	19	St Mary's Mums Christmas Party	Church Rooms 9.15 - 10.45am
Sat	21	PBCG work group	TBC 9.00 - 1.00pm
Sun	22	Beacon Praise	St Mary's Church 11.00am
	22	Carol Service	St Mary's Church 6.00pm
Tues	24	Morning Prayer	St Mary's Church 9.00am
	24	Crib Service and children's dress up nativity	St Mary's Church 4.00pm
	24	Midnight Mass	St Mary's Church 11.15pm
Wed	25	Christmas Family Communion	St Mary's Church 10.00am
Sun	29	Holy Communion	St Mary's Church 11.00am
	29	Deadline for Beacon Copy	
Tues	31	Morning Prayer	St Mary's Church 9.00am
January			
Fri	3	Community Hub	Richmond 9.30 - 11.00am
Sat	4	Last day for Enchanted Garden Lights	Rococo Garden 4.00 - 7.00pm
Mon	6	Community Lunch provided by Painswick Conservation Group	Town Hall 12.00 - 1.15pm
Thurs	9	PMAG: Tchaikovsky - the Russian romantic - Reg Wrathmell	Town Hall 2.30pm
Fri	10	Friday Club: Birmingham City of Culture - Malcolm Lewis. Enq 812942	Town Hall 2.30pm
Sat	11	Painswick Beacon published	

PAINTING & DECORATING

Domestic & Commercial
Internal & External
Gloucestershire & Cotswolds
Based in Painswick
Detailed quotes
Fully insured

Call Ken Ticehurst

07808 511066

glospaint.co.uk

B. Pearse Carpentry

" A complete woodworking service "

All internal / external work
Bespoke Joinery supplied and fitted
Staircases, kitchens, wooden flooring
Timber framed buildings / extensions
Traditional cut Roofing
Renovations / Alterations

Ben.pearse@hotmail.com

07791 639 635

SALLY ELLWOOD

LIME

Lime wash, pointing, render and plaster
for period and listed buildings.

Art and design.

Tuition and consultancy.

07940 108 333

www.sallyellwood.com

info@sallyellwood.com

Personal Column

Condolences

To the family of RICHARD HARRIS who passed away on 24 October. He loved Painswick and until he could no longer walk, he joined in many activities, including the Horticultural Society now the Gardening Club, the Local History Society and for some years volunteered at the Tourist Information Centre which is housed in the gravedigger's hut! He had many health issues but never complained. Sadly, he couldn't beat his last diagnosis of leukaemia. Thank you to all our many friends for your support and a special thank you to Painswick surgery and the Longfield nurses who cared so deeply for him.

Thank You

Sarah Lucas writes:

Thank you so much to Fred and Sue and another young couple (so sorry, I didn't get your names) this evening for helping me get my car off a verge on Stamages Lane. I pulled over to let another car by and my car got stuck on the grass verge - I was panicking and in tears as it's been a

long week and it was very much the last straw for me.

Both couples helped me by pushing my car and driving it, with Sue brilliantly managing to get it back onto the road for me. I don't know what I'd have done without you all. Thank you so much for your kindness and comfort - you made a massive difference to me today.

For the Personal Column contact
Vicky Aspinall, cvasp.26@gmail.com

MINI - ADS

White Shaker style 3 door wardrobe with mirror. 107x53x180cm. Purchaser to collect. £25. Plain grey wool rug 175x122cm £15. Please call Jane 07793 202850

Collectible Dunhill Lighters (Aquarium, Horse Racing, Fox Hunt, James Bond) - sell and buy with Nicholas Wells (Painswick) www.nicholaswells.com

Car seat for baby/toddler. Good condition. Free on collection. Tel 01452 812942

NEXT ISSUE

Publication date

SATURDAY

11th January 2025

**Deadline for all copy
Sunday 29th December**

www.painswickbeacon.org.uk
for current issue and archive, the annual directory and village maps.

for editorial attention only use
beacon@painswick.net
or hard copy - preferably typed
Beacon post box - New Street

All copy must include author, address and contact telephone number. Photographs and advertising art work original at 600dpi in JPEG

The Beacon Team

Co-ordinating Editor this month

Alastair Jollans 814263
beacon@painswick.net

Editing Associates

Peter Jackson 07985 002325
beacon@painswick.net

John Barrus 812942
beacon@painswick.net

Next Month's Editor

John Barrus 812942
beacon@painswick.net

Diary and Personal Column

Vicky Aspinall 07557 524016
cvasp.26@gmail.com

Feature writer and Directory

Carol Maxwell 813387
features.beacon@painswick.net
directory.beacon@painswick.net

Sport

John Barrus 812942
barrusjp@yahoo.co.uk

Distribution

Susan Delaney 07506 751761
distribution.beacon@painswick.net

Treasurer

Richard Aspinall 07884 214146
treasurer.beacon@painswick.net

Advertising

Peter Rowe 813228
advertising.beacon@painswick.net

Subscriptions

Jacek Wolowiec 813295
subscriptions.beacon@painswick.net



GODDARD'S GARAGE

Cheltenham Road, Painswick

- * Full servicing & repair facilities
- * MOT preparation & repairs
- * Private hire - taxi
- * Petrol / Diesel / Tyres / Exhausts
- * Paraffin / Coal / Calor Gas
- * Car valeting
- * Air conditioning

Personal attention for your car

01452 812240

goddards.garage@hotmail.co.uk

GROUNDWORKS - DRAINAGE

EQUESTRIAN WORKS

LAKES - PONDS - WATER FEATURES

FENCING - DECKING - HEDGING

DRIVEWAYS - PATIOS

TRADITIONAL BUILDING WORK

ALL PASSIONATELY UNDERTAKEN

GROUNDWORKS
LANDSCAPING

BLC

BUILDING
PROFESSIONALS

PLEASE CONTACT

BEN LIVING

01452 812036

07702 984711

enquiries@blc.uk.com

www.blc.uk.com

Unique

GLASS

Solutions

Painswick based

Bespoke Architectural Glass

Glass Balustrades

Shower Screens

Glass doors and Screens

Splashbacks

Juliet Balconies

Glass Canopies

Bespoke Mirrors

07717 741 275

Simon@uniqueglasssolutions.co.uk

uniqueglasssolutions.co.uk

Printed in Gloucester

for
The Painswick Beacon

by
www.inkylittlefingers.co.uk

01452 751900





Above: Beacon Hall on Goodwill Evening



Above: Liquidambar on Stamages Lane



Left: 11am on 11th November



Left: Father and Mother Christmas at the Goodwill Evening



Far Left: Early snow on Painswick Beacon on 19th November (photo by Phil Taylor)

Below: Fireworks at The Croft School lighting up the night sky (photo by Pete Llewellyn)



May we remind all Beacon contributors that articles submitted should not normally exceed 250 words. Articles will usually be acknowledged within two days and we are happy to be reminded if no acknowledgement has been received in this period.