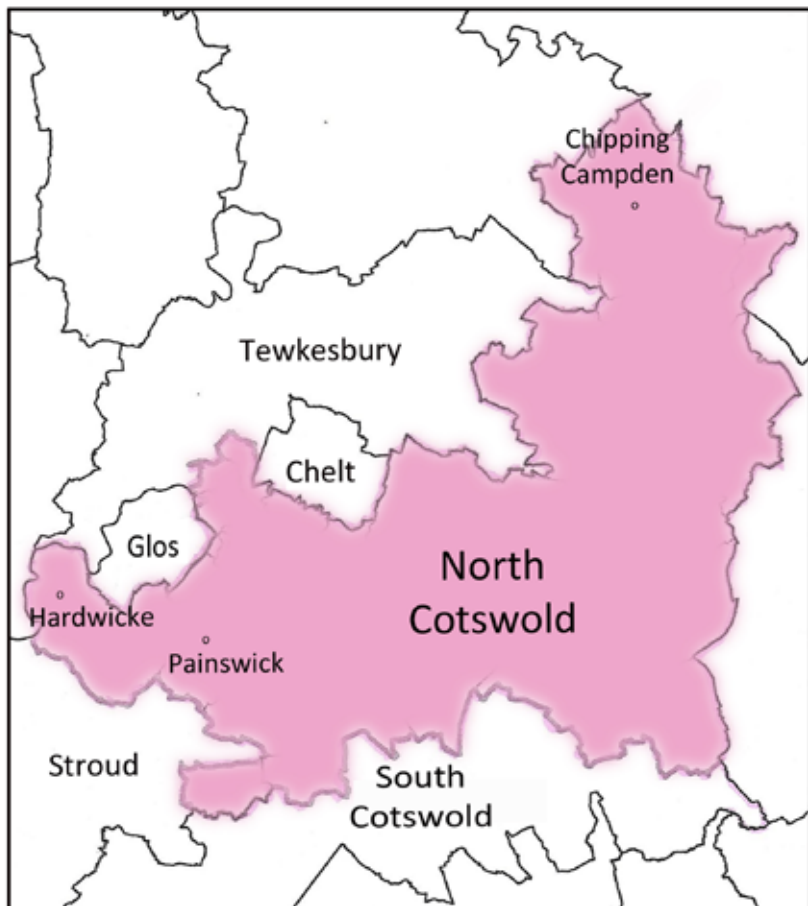


The Painswick Beacon

Volume 47 Number 4

July 2024



Painswick decides General Election - 4th July

After a gruelling campaign - for the voters, the candidates and, even more so, the party leaders, the General Election will finally arrive this coming Thursday, 4th July. For all those registered in Painswick, voting will take place in the Town Hall between 7am and 10pm.

There are two important changes this time that should be noted. Firstly, this will be the first General Election at which photo identity will be required. This can include a passport, driving licence, blue badge, Government-funded bus pass, or identity card issued under the proof of age standards scheme. For other possibilities, see the Electoral Commission website.

Secondly, Painswick is now part of the new North Cotswolds constituency, which stretches from Hardwicke, south of Gloucester, to Chipping Campden in the North East of the county (see map alongside). As the constituency did not exist at the last election there is no sitting MP. A range of estimates of how it might have voted last time, and predictions of what might happen this time, are available on the internet.

There are six candidates standing in the constituency and the Beacon has offered each of them the opportunity to publish a statement and photograph. Where these have been received, we are including them, without further comment, on our centre pages this month.

George Hodder

The Council are heartbroken to announce that our beloved GEORGE HODDER, sadly passed away on Tuesday 4th June 2024. We were all so lucky to have had George, who loyally served the Council and the Community for over 37 years as well as being a Retained Fireman at the Painswick Fire Station for over 20 years prior to it closing. Words are just not enough to describe what George meant to everyone, he was kind, funny, hardworking, adored and will be greatly missed!

Our sincere condolences to his wife Sheila and his family, (especially his much cherished daughter Rachel and granddaughter Bailey and grandson Cole). We hope they find comfort in knowing that George was well loved and respected by all that were fortunate to have met him.

Extraordinary meeting of the Council on the 5th June

The Council unanimously agreed to grant MR MARTIN SLINGER The Honorary Freeman of the Parish, and also unanimously agreed to posthumously grant the same honour to MR GEORGE HODDER. This follows their many years of service to the Council. The only other current holder is Mr Terence Parker.



Community Speedwatch

The latest figures for May from the police are shown below

Community Name	Painswick and Edge
First Warning letters sent	71
Second Warning letters sent	13
No Further Action	1
Further Action	2
Total processed	87

Burglaries in Painswick.

Police update

The Beacon understands that a suspect has been caught for the recent burglaries in Painswick. The case has had a first hearing at the magistrate’s court and the suspect is now being sent to the crown court for further hearings. The first hearing is set to be heard at Bristol Crown Court in July.

From the County Councillor's report

A46

I am awaiting an update from Street works regarding the date for A46 to be closed. I have requested it be done during school holidays as logical given bus cessation during the road closure.

“Fixmystreet”.

Use this site to report any issues in your area concerning potholes, lights, footpaths, pavements etc. Go to the Gloucestershire County Council site. Then “Fixmystreet” and enter the details.

Maximum word limits (300)

Now that we are receiving more items for the Beacon it is important that contributions have a maximum of about **300 words** unless you have approval for more by the editor.. This enables the Beacon to include as many contributions as possible in each issue

Planning Meeting held Wednesday 5th June

Matters requiring a decision:

a. S.24/0814/HHOLD 1 Gloucester Road Erection of a single storey rear infill extension The Committee agreed to support this application.

b. S.24/0884/LBC . Holcombe House Alterations to house, coach house, barn, pool house & landscaping The Committee agreed to support this application, subject to satisfying the points made by Historic England.

c. S.24/0883/HHOLD Holcombe House Alterations to house, coach house, barn, pool house & landscaping. The Committee agreed to support this application, subject to satisfying the points made by Historic England.

d. S.24/0801/LBC Washwell House, Cheltenham Road Installation of a kitchen. The Committee agreed to support this application.

e. S.24/0866/LBC Dover Cottage, Vicarage Street Replace existing timber framed casement windows with like for like timber casement windows. The Committee agreed to object as there is insufficient information on the design and specification of the proposed windows.

f. S.24/0900/LBC Court House, Hale Lane Internal alterations to form a new open plan kitchen/dining room, including the lowering of the ground floor level. The Committee agreed to ‘no comment’.

g. S.24/0898/HHOLD Woodridge, The Highlands Erection of boundary walling and gates. The Committee agreed to ‘no comment’.

h. S.24/0942/CPE Bopoto, Slad Road, Slad Construction of a stable block for a period in excess of 4 years. The Committee wished to comment that they can testify that horses have been present, in excess of 4 years.

i. S.24/0943/DEM Beechwood, Cheltenham Road Demolition of old timber shed with corrugated tin roof. The Committee agreed to support this application.

j. S.24/0934/TPO Trees St Marys Mead T1 Horse Chestnut - Crown reduction by 2m. The Committee agreed to support this application.

k. S.24/0905/TPO Castle Hale, Stamages Lane Sycamore Tree (T1) - Remove all major deadwood & crown clean. Reduce selected low limbs. Beech Tree (T2) - Remove all major deadwood & crown clean. Reduce broken limbs. Lime Trees (T3) - Remove all major deadwood & crown clean, removing/reducing any broken, rubbing or declining limbs. Beech Tree (T4) - Remove all major deadwood, crown clean to improve appearance. Remove/prune back any broken, declining, rubbing limbs. The Committee agreed to support this application.



Kate Rich
walks Painswick's
'Diamond Dogs'
Stimulating Dog Walks
that include the best 'sniffy places' to
delight your dog
Also: Bespoke Dog Sitting Service
Tel: 07785 562616
www.katerich.co.uk

**Julian Telling
Garden Services**
New Service - Green Waste Collection
We supply 1 bulk (tonne) bag
You fill it, then call for collection - £20.00
Tree Felling, Pruning & Maintenance
Fencing & Fence Repairs, Lawn Cutting,
Strimming, Turfing, Weed Control, Hedge
Cutting & Shaping, General Garden Clearance
Gutters & Patios Cleaned, Powerwashing
07895 224863
Juliantelling@yahoo.co.uk

A surreal experience

One of the world's best collections - here in Painswick

From the moment you walk into the Arts & Crafts Museum, housed in the former Congregational Church in Gloucester Street, it is clear that this is no ordinary museum. As the owner, John Ashton Beer, is quick to explain, he is rather short of space. Having lost a significant amount of warehouse space over the pandemic, he has had to bring all of his extensive collection to this one building. He is not exaggerating. Furniture is piled everywhere and the area where the pews used to be in the old church has disappeared under a mountain of chairs. It is a surreal sight, presided over by the magnificent stained glass window, designed by Burne-Jones. For John, that is the centrepiece of the museum. "I bought a window", he says, "and it came with a church attached".



The main church room though is largely inaccessible, as is the balcony, where chairs are piled up. But as you start to appreciate what is there, it becomes even more extraordinary. Here, right in the centre of Painswick, is probably the best collection of Arts & Crafts furniture anywhere in the world and John Ashton Beer is the most knowledgeable guide to it.

C. R. Ashbee, founder of the Guild of Handicraft, who for many years worked at Chipping Campden, is particularly well represented in the collection, with several major pieces, as is Ernest Gimson of Sapperton. Both were major figures of the Arts & Crafts movement in the early part of the twentieth century, which was particularly strong in this area. Gimson chairs are scattered around the museum, some with pride of place, but others just piled up, almost carelessly. There are also pieces by the Barnsleys and by William Morris, whose influence is everywhere. And amongst it all, one rather different piece that John casually mentions is an oak chair by Tiffany.

It is not like this that John wants to display his collection and in recognition of the disarray, there is currently no charge to enter the museum. He would like to develop it into a more conventional visitor attraction, but that is dependent on finding a much larger building into which to move a large part of the furniture. His ideal would be a vacant stately home that he could furnish, but he has also looked at the possibility of re-purposing the old monastery building at Prinknash, currently falling into dereliction, and would welcome other ideas.

The collection is available to visit on Saturday and Bank Holiday afternoons in the summer, usually from around 2.30 until around 5pm, or by appointment. You can contact John on ashtonbeercollection@gmail.com

Alastair Jollans



Painswick Gardening Club

Twenty four Members joined a club outing by mini-bus to Cerney House Gardens on Wednesday, 12th June and were very lucky with the weather. Our committee, having arranged this event, brought Prosecco and nibbles for us to enjoy as the current owner gave us a comprehensive introduction to the history of the house and garden. We were given a map each and encouraged to explore the grounds on our own. We were impressed that the garden was open seven days a week, with trust boxes for entry and refreshments. Having enjoyed a calm evening we were treated to a rich orange setting sun on our return to Painswick.

We will be meeting on Wednesday 10th July. Andy Jeanes, a clematis expert, will be giving us a talk on climbing plants. We break for August, though we are hoping to arrange an August Coffee Morning in a Members garden for those that might like to come. Yearly Membership will be in September.

Joyce Barrus





A rare opportunity - 400 year old document on display

The Local History Society has for some years now held a biennial exhibition in the Town Hall and this year it will take place on Saturday and Sunday, 6th and 7th July. The exhibitions have always presented a comprehensive range of subjects throwing yet more light on Painswick's fascinating past and this year's display promises to continue this trend. In fact, this year will be exceptionally interesting with a rare opportunity to see something amazing.

Throughout most of the 16th and into the 17th centuries there occurred endless rows, arguments, court cases and problems in Painswick involving the various lords of the manor and the residents. In 1624 an Act of Parliament, specifically relating to Painswick, was passed to finally establish the rights and legal responsibilities of both lord and residents, and the potential penalties for infringements thereof. For this year's exhibition the original, the authentic, Act of Parliament document together with the wax royal seal will be on view for all to see. This is a very rare opportunity indeed, a once in a lifetime chance to see an official document which is exactly 400 years old this year.

The document is 'Customs of the Manor of Painswick', customs meaning rights and obligations, and there were very, very few situations nationally where it became necessary to set out the rules with an Act of Parliament. A glimpse into Painswick's troubled past perhaps and, furthermore, in theory these rules still apply!

So, with a range of subjects as well as the customs document and a display of history work undertaken by children from the Croft School this promises to be an interesting and informative weekend. Entry is free and refreshments will also be available. Everyone is welcome.

Carol Maxwell

Jottings

Now we are into Summer I thought it might be interesting to reflect on the past Painswick Annual Shows held in the grounds of Painswick house between 1890 and 1899. F.A. Hyett kept a record of this decade of Parochial History:

1890 August 7th : The Fifth Flower & Garden Show held in the Park, Painswick House. Display of Fireworks.

1891 August: Annual Cottage Flower & Garden Show. Added this year was the Industrial Show including Wood Carving and Teaching of art.

1892 July 21st: Annual Flower & Cottage Garden Show. There were classes for Poultry, Rabbits, Cookery, Honey and Woodcarving.

1893 July 27th: Painswick Flower, Garden and Poultry Show held in the Park, Painswick House. Falling off of Gate money £1 4s 1p. Balance to credit of show at beginning of year £16 15s 3p. & is now £2 11s 6p

1894 July 26th : The Annual Flower Show.

1895 August 5th : Painswick Flower Show in conjunction with Industrial Exhibition & Poultry Show. £25 12s was taken at gate.

1896 August 3rd : Bank Holiday. Annual Flower Show. £47 Gate money. Poultry Show numbers down – no Open Classes due to small pox in Gloucester. They had the Eastington Band, the Bells rang, Cricket Match; 5 – 7 pm Athletic Sprints & Bicycle races. Then a display of Fireworks.

1897 July 22nd : Gate money amounted to £28

1898 July 21st : Rained. New classes for Dairy Produce.

Martin Slinger

P.L. ALLARD
BUILDING & ROOFING LTD.
Specialists in Period & Modern Property

Cotwold Stone Tiling	Interior Renovation
Natural Slate	Bathrooms & Kitchens
Woodstoves	Chimney Repairs
Guttering & Leadworks	General Building

T. 01452 814278 M. 07841 695705
www.allardbuilders.com p.allardbuilders@gmail.com

MANN Jewellers
Established 1741
— 8 GEORGE ST, STROUD —

GOLD COINS WANTED
Sovereigns, Krugerrands & Bullion
bought for cash or instant bank transfer
We also buy **jewellery & classic watches**

Visit our Stroud shop
01453 764097
Mention this ad for a free appraisal

We are still an independent family-run business



Craftsmen Builders



Building & Plastering work
No job too small

Call George 077716 007324
Painswick 01452 814828

www.craftsmenbuilders.co.uk



Gardens
&
Interiors

www.cotswoldcontemporaryliving.com
Designed in Painswick 07832 351864



Cotswold Animal Services
Home environment doggy day care and
boarding based in Painswick.
Group socialisation dog walks or 1-1's.
Equine care and cat sitting in your home.

+44 (0) 7814 955975
www.cotswoldanimalservices.co.uk

Painswick Patient Group

News for July 2024



Pressures on GP Practices

NHS Gloucestershire has announced that GP surgeries across the County are delivering an average of 394,181 appointments for patients each month, an increase of 26.2% on pre-COVID pandemic levels. That makes just under 5 million a year, which set against a population of around 650,000 is quite stunning.

How does this impact on us? Well, Painswick Surgery is undoubtedly worse than this average because of local demographics with more older people. And this is at a time when NHS England is starting to claw-back the 'excess' funding over the pandemic period so good news is not expected.

Patients not attending appointments

Our announcement of local statistics for non-attendance in the April Beacon was picked out for front page news by the editors and we are all looking for patients to respond. In May, 71 patients were guilty of this and staff shortages are now making it even more important for us as patients to help the efficiency of the Practice. We must cancel no-longer-necessary appointments in advance and make sure we don't simply forget them. In England overall, 90.2% of appointments were attended so we are not showing ourselves off well. What can you do about it? If you have a smartphone, put a reminder on it to alert yourself earlier in the day or the night before. Otherwise non-urgent appointment waiting times will stretch ever longer.

What are the staff shortages?

One receptionist left recently to return to her homeland, another will leave soon, though there is good news in this as she will be embarking on a nursing career. It will take time for these two to be replaced so please give every thought to the alternatives to GP attendance, including phoning 111 (also online). This is the local clinical assessment service offering patients access to general and specialist advice from clinicians. Remember too the Out-of-Hours service is accessed through this same phone number for urgent care needs.

Light on the horizon?

NHS Gloucestershire has announced that Glos Health and Care Trust (Stroud Hospital, mental health services etc) has been awarded a contract to provide an Integrated Urgent Care Service (IUCS) for local patients which will include NHS 111 and the Primary Care Out-of-Hours service. We must hope that bringing these GP supporting services together will help both patients and Practice.

Increase in PPG Membership

We have been glad to welcome four new members recently and an induction session has been held including a focus on deepening understanding of the complexity of the organisation and management of the NHS - and about 20 essential acronyms. There are many more!

Going behind our news

If you want to link online to the sources of the information we pass on, or would like to receive the email version of our bulletins simply because they contain more information, just drop an email to painswickppg@gmail.com

David Perry, PPG Chair

myhealthpal.co.uk
**Private Health Insurance
Broker in Painswick**

AVIVA AXA
Bupa Vitality
The Exeter WPA

You May be Able to Change Insurer and
Maintain Cover for Pre-existing Conditions

01453 621250
George@myhealthpal.co.uk

FIVE VALLEYS
Friendly and Professional Local Team
Female and Male Cleaners Available

Regular and One Off House Cleaning
Office Cleaning - Regular and One Offs
End of Tenancy Cleaning
Holiday Let Cleaning
Deep Cleaning
Carpet Cleaning
Oven Cleaning
Window Cleaning

mob 07516 766689
www.fivevalleyscleaning.com
www.facebook.com/fivevalleysltd

Unique
GLASS
Solutions

Bespoke Architectural Glass
Glass Balustrades
Shower Screens
Glass doors and Screens
Splashbacks
Juliet Balconies
Glass Canopies
Bespoke Mirrors

07717 741 275
Simon@uniqueglasssolutions.co.uk
uniqueglasssolutions.co.uk

Painswick based

News from St Mary's



As we move into July and the prospect of the summer holidays, many people will be looking forward to spending precious time with their families and friends, whether going away or staying at home. Perhaps this is a good point to reflect on what family means to us; to appreciate the great strengths and variety of families.

Families can take many forms, whether they are formed by blood relationship or other equally strong bonds; maybe ties of strong friendship or shared faith. Families are where we turn for receiving, giving and nurturing love, understanding and support.

Families can connect us with our past and can be the ground for the future through children. They can be the places where we have the best chance of being understood for who we are, not what we possess or what position we hold. They can give us meaning in life and hope when the outside world fails us, or when we fail. We turn to our families when we want to celebrate or commiserate.

Our church families also celebrate together and during these summer months, there are significant dates in several of our parishes. As June ended, Pitchcombe held their flower festival to celebrate the feast day of their patron saint, John the Baptist. Sheepscombe usually mark the anniversary of their church's dedication at the start of this month and Cranham have the feast of their patron, James the Apostle at the end of the month. Of course, July also contains St Swithun's Day – the patron of the church at Brookthorpe. Aside from the tradition that his feast affects the weather for the next 40 days, July 15th is a good time to remember the members of our benefice family in Brookthorpe. It is good to keep the tradition of marking these feast days; it provides us with an opportunity to strengthen our bonds as family in our parishes.

So take the advantages that a summer break offers to renew and strengthen those ties in the next couple of months and enjoy the blessings of family life – however that family or support group is made up.

Andrew Leach



On May 24th Peter Petrie joined us talk to about Laterality. We quickly realised this meant about left handedness but not how much it has influenced our traditions.

On June 7th Emma Alesworth came to talk of her experiences as a Fisheries Officer in the Falkland Islands. Her talk, illustrated with her own excellent photographs demonstrated how hazardous this was especially to a 24 year old in a male dominated environment.

Our Outing on 21st June, to Nature in Art at Twigworth near Gloucester included a talk by Simon Trapnell, about the museum; and lunch. This is a museum of art inspired by nature, which has won awards for work with children and offers adult classes in various art forms.

Going into July, on the 5th, we have a talk by Kirstie Bingham entitled: "Tudor swearing, sex & loos! As NOT seen on TV". Then, on to our final event before our break in August, our President's Tea Party, on Friday, 19th July, for Club Members.

New Membership is now £10 for the rest of the year (up until Christmas) and we pay £2 per meeting. Guests are welcome at £4 a meeting. We start back in September with a Boat trip on the Gloucester-Sharpness Canal on 6th September.

Why not venture forth and enjoy an afternoon with Club Members, rounded off with tea and biscuits and most important of all stimulating conversation with likeminded Members. Meetings commence at 2.30pm in the ground floor room of the Town Hall. See you soon.

Joyce Barrus

**PAINSWICK
CURTAINS & BLINDS**

Vicki Moore

Beautiful, quality
curtains, blinds and soft furnishings
Custom made by hand

01452 810707
07810 646714
vickicloore@gmail.com

B. Pearse Carpentry

" A complete woodworking service "

All internal / external work
Bespoke Joinery supplied and fitted
Staircases, kitchens, wooden flooring
Timber framed buildings / extensions
Traditional cut Roofing
Renovations / Alterations

Ben.pearse@hotmail.com
07791 639 635

**LARWOOD
GARDEN SERVICES**

MOWING AND LAWN CARE
WEEDING, PRUNING AND PLANTING
HEDGE CUTTING AND CLEARANCE
FENCE AND SHED REPAIRS

TRUSTED LOCAL COMPANY, ESTABLISHED 1998.
FOR A FREE ESTIMATE CONTACT NEIL ON:

07816 496087

ENQUIRIES@LARWOOD.NET

Painswick Valley Probus Club



Antiques and Auctioneering

On Thursday 23rd May 2024 members were entertained by consultant antiques enthusiast and auctioneer Peter Ashburner who specialises in toys and has appeared on TV programmes such as Antiques Roadshow. He filled 2 tables with interesting examples and invited the audience to value some, resulting in a hopelessly wide range of suggestions!

Previously Peter would auction up to 160 lots per hour but nowadays each lot takes longer due to the increased number of bids via the internet. The pace of bidding helps to encourage spontaneous bids, sometimes increasing the final sale price.

The Crown Jewels

On Thurs 6th Jun 2024 John Gaylor gave Painswick Valley Probus Club a most interesting talk on the history of the Crown Jewels which spans a period of almost 1000 years.

In 1649, at the close of the English Civil War, Charles I was executed and the monarchy was abolished. Items from the royal regalia were then sold by Parliament to fund the new government. Jewels were sold and items of silver and gold were melted down and turned into coins.

By 1660 the monarchy was restored, and Charles II ordered the creation of new regalia for his coronation in 1661. These make up most of the collection which can be seen today at the Jewel House within the Tower of London. Initially, jewels were hired and could be moved between items of regalia. Over time, jewels including the massive Koh-i-Noor diamond and the Cullinan diamonds were either purchased by the monarchy, or gifted as part of post-war settlement treaties.

Next Meeting

On Thurs 4th July Jack Boskett will be talking about Royal Photography and Trains. All welcome.

Henry Hall



CNFC Trip to Norfolk

The Club's 5-day, 4-night excursion in September to Norfolk (Monday 23rd to Friday 27th) is fast booking up. Based in Norwich, the excursion will

include visits to the Sandringham Estate, the Jacobean Blickling Hall, a trip on a paddle steamer on the Norfolk Broads, plus visits to Ely and Norwich Cathedrals. The trip will also include a visit to Cley Marshes Nature Reserve, regarded by many as one of the UK's premier bird watching spots. The reserve's award-winning visitor centre, built into the hillside, offers panoramic views across the coastline and makes the perfect spot to rest and refuel after guided walk around this magnificent reserve. Contact either Jane Rowe on tel. 813228 or Denise Magauran (tel. 814570) for further details and booking form. If the trip is over-subscribed, a reserves list will be compiled to cover cancellations.

For further information about the Field Club, please contact Clare Woodman on CNFCMembershipSec@outlook.com or visit our website <https://www.cotsnatsfield.club/>

You can also follow us on FaceBook to see our latest updates.

Jane Rowe, 813228 or Email: cotsnats@gmail.com

Yew Trees W.I.



'Traditions', my dictionary tells me, are "The handing down from generation to generation of the same customs". Mike Bottomley, the speaker at Yew Trees WI May meeting, is very concerned that in England traditions are dying out. He believes that not enough importance is given to the enjoyment that can be got from such things as the Helston Flora dance. Here residents can feel really connected to the community knowing they are following in the steps of their parents, grandparents and great grandparents.

In Cheltenham in 2014 Mike and fellow enthusiast Phil Collins revived the Old May Day Tradition of Jack in the Green. This developed from a May Day tradition first recorded in the 17th century which involved milkmaids decorated with garlands, accompanied by musicians dancing down the street. In the 18th century this custom spread to chimney sweeps who covered themselves in elaborate structures made from greenery and thus Jack in the Green evolved. Mike's talk was delightfully illustrated with examples of the range of customs enjoyed throughout Europe from cows being brought down from alpine pastures to Morris men, Flora dancers and of course Jack in the Green.

Many thanks go to Jane Rowe for organising a most successful outing to Cardiff on 30th May. Members of Yew Trees WI and friends thoroughly enjoyed seeing Michael Sheen in the leading role of 'Nye' at Wales Millenium Centre.

At our July Meeting there will be a talk on Stroud Women's Refuge. Ladies do come and join us on Tuesday 23rd at 7.30pm in the Church Rooms.

Celia Lougher 812624

Trees, shrubs or hedges need attention?
Call for a free quote from the local experts.
01285 760466



Trusted with the Painswick Yews for over 35 Years

Trustpilot
Rated 'Excellent'

TRUSTMARK
Approved Quality

Google
4.9/5

Tree Maintenance Ltd

Graham Watts Carpenter and Joiner

Experience in all aspects of construction from project management to the final coat of paint

I am looking for small building/ carpentry projects in the local area

Please call 07850 312984
email alisdairw@gmail.com

FRASER HALL

MINI DIGGER WORK: ALL TYPES
GARDEN MAINTENANCE
DRIVEWAYS & FOOTINGS
AGRICULTURAL FENCING
TREE SURGERY
SEASONED FIREWOOD



M: 07766 132 903

FULLY INSURED
BASED IN HARESCOMBE

Historic crimes in the month of July

The following are just some of the crimes committed.

1844 Benjamin Wager, age 64, 5ft.2ins., hair scanty grey, eyes dark grey, oval visage, dark complexion. Trade – toll collector [in 1841 census his occupation is given as spinner]. Charged on the oath of Elizabeth Banks with feloniously assaulting her at Painswick and unlawful abuse and carnally known, she being a girl under age of ten years. Not guilty. Two months later he was tried again for the same crime and found guilty. Sentence – 18 months in the House of Correction.

John Hogg, age 15, height 5ft., hair light brown, eyes blue large, long visage, fresh complexion, large mouth. Trade – farm labourer. Charged with feloniously stealing at Harescombe a cheese, the property of John Bishop. Guilty. Two calendar months hard labour at Horsley House of Correction.

Isaac Pearce, age 21, 5ft.5ins., hair light brown. eyes grey, long visage, fair complexion. Trade – labourer. Charged with feloniously stealing two quarts of cider the property of William Ponting. Guilty. Three days in gaol.

Two others, George Clissold, age 24, and John Weaving, age 21, both of whom state ‘always go to church’, were tried for the same crime and found not guilty.

1864 William Foxwell charged with deserting the service of his master, William Rodway, wheelwright and carpenter, to whom he was apprenticed. It was stated that he did some work wrongly and, on being remonstrated with, he became insolent, threw down his tools and left. The parties had not been on the best of terms owing to the defendant having lately been away for three weeks to serve in the militia, and the defence was that the master was not kind to his apprentice, but neglected and continually found fault with him. An effort by the Bench to get the parties to settle was futile. Case adjourned.

Leonard Gardiner, charged with having absconded from the service of his master, Abraham Ireland, wood dealer. Guilty. Ordered to return to his service and payment of 2/6 costs.

1884 Charles Musty, charged with being drunk at the Cross. P.C.Smith stated that he found him drunk and falling about. He had cut his head and was very dirty, He had no home and witness sent him off to a barn where he usually slept. He had promised that if he was let off this time he’d “never get drunk anymore.” Fined 2/6 and 2/6 costs, in default 7 days.

Edward Howell, landlord of the Bell Inn, was fined 2/6 and costs for being drunk on his own premises. P.C.Jones proved that he was very noisy and abusive.

Thomas Musty, a boy, charged with cruelty to a fowl by throwing stones at it, but as there was no intention of hurting the bird the Bench dismissed the case.

Thomas Wright, mason, charged with assaulting Alfred Trigg, a blacksmith. Complainant said he was standing at the Cross on Saturday night talking to two other men when defendant came up and asked for 2d which he said he owed him. He denied owing it and defendant said he would beat it out of him, at the same time hitting him several times in the face and beating his head against the ground. He threatened to knock his brains out. Defendant afterwards hit him twice in a shop. Fined 5/- and 8/- costs.

1924 Herbert Pearce, fined 7/6 for riding a bicycle without a light.

Edward Jefferies, fined 10/- for using obscene language.

1934 Kenneth Ireland, age 19, stated to have a mania for stealing padlocks. This time he pleaded guilty to stealing a padlock, value 6d, the property of Ralph Dee of Nailsworth. Whilst working in his garage Dee saw Ireland pedal-cycling towards Stroud. Seeing the padlock was missing from the cabinet he chased after Ireland on his motor-cycle. He asked for the padlock which Ireland produced from his pocket with a bunch of keys. He had been drinking. He had stolen four or five padlocks recently in Painswick district. He said he was very sorry. Bound over in the sum of £5 to be of good behaviour for two years.

Carol Maxwell

Your local area electrician



MJBoon
Electrical Ltd

07773 626241
matt@mjboonelectrical.co.uk
www.mjboonelectrical.co.uk

- Free estimates and advice
- All aspects of electrical work undertaken



NICEIC
APPROVED CONTRACTOR

painswick osteopaths



Paul Stamp D.O. Helen Froggatt D.O.

Tel: 01452 301748

- Structural
- Cranial Osteopathy
- Sports Injury
- Neck, Shoulder, Hip, Knee

Parking Available

No-one else took pictures like these



At the last meeting of the season Howard Beard gave a stunning presentation of photographs taken by W.F.Lee to whom both Howard and Laurie Lee were related.

W.F.Lee began his photographic career in Stroud at the age of 16 and spent the next 10 years capturing on film what was essentially very real life throughout the Edwardian years. Most of the results are very different from the usual conventional posed pictures of that period and, as Howard pointed out, for the local historian of the Stroud area his pictorial legacy comprising hundreds of photographs is an unparalleled social record of local people, street scenes, transport systems, village views and special events.

The photographs depict Lee’s very distinctive style which was both aesthetically pleasing and historically significant. The Stroud he showed us was full of life with a range of shops, buildings, streets full of people and, for special occasions, extremely elaborate decorations. It was real social history. Lee’s photography career coincided with the beginnings of picture postcards and much of his work was used for that purpose. Members were definitely amazed by and happy to have seen this selection of this very young man’s stunning pictures.

The next season’s programme of meetings promises to be really interesting and starts in September.

Carol Maxwell

Foodbank

It might be of interest to readers to learn about how individuals get help from the Stroud Foodbank. There are often misconceptions about this. Firstly, our local Foodbank (located in Brimscombe) operates using a 'voucher referral system.' This means professionals and agencies such as GP's, Citizens Advice or schools issue a voucher to enable access to a food parcel. Everyone eligible is then encouraged to visit one of six 'hubs' in Stroud where they are met with a warm welcome, a cup of tea or coffee and can connect with advisors who can help with strategies to lift them out of food poverty. Each food parcel is individually prepared by volunteers at this hub who check with the client to minimise food waste and ensure dietary suitability. Home deliveries are also available for those who are housebound.

Our next collection will be on Wednesday 10th July. Volunteers will be in the Stamages Lane car park from 10am - 12 noon to receive donations. Please may we ask for some of the following: Fray Bentos pies, pasta sauces, tinned tomatoes, tinned sweetcorn, tinned rice pudding, tinned custard, tinned corned beef, tinned ham, tinned potatoes, instant coffee, jam, Marmite, peanut butter, laundry liquid, washing up liquid and toilet rolls.

Please note, we will be taking a break in August and will be back in Painswick in September. As always, if you prefer to make a bank donation, you can do so using **the following details:**

Stroud District Foodbank CIO Sort code: 09-01-29 Account: 21994911

The Foodbank Team Mobile: 07950 651228



Call with Slavutych

Five residents of Painswick met by zoom with Nellia (an English teacher), Alexander (one of her mature students), Larissa (a dance teacher) and Sergei (director of an NGO). We talked mostly about life in Slavutych now.

There are constant air raid sirens and unpredictable power cuts. There are restrictions on movement. All this you get used to, they said. Currently the worst thing was the seasonal mosquitos. Then they told us about the Chernobyl guards.

A hundred and sixty Slavutych guardsmen had been captured by the Russians at Chernobyl in the early days of the war. Some had been returned. They were emaciated "like concentration camp victims" and were being treated in hospital. The rest were still in Russia. The town had raised their case with President Zelensky when he had visited recently, but there was no news. We turned to talking about Slavutych's University for Adults, in which Nellia and the rest were all involved. Sergei promised to teach us how to cook borshch on our next call.

It may seem strange that such a conversation could have left all of us smiling. In war there is not much any one person or village can do. But the chance to talk - and joke - with strangers seems to go a little way.

John Dickinson

Simon Gyde
Carpenter and Joiner
City & Guilds
Purpose Made Joinery
Restoration Woodwork
General Building Services
07768.173726 simongyde@yahoo.co.uk

Local Treasures
Gardening
Regular or one off bookings
Handyman
All DIY jobs, Decorating
Cleaning
Regular house cleaning
Home Help
Companionship & Shopping
Making homes safe and secure
An experienced local team ready to help with your home chores.
www.localtreasures.me
hello@localtreasures.me
0333 23 41168

CHORLEY'S AUCTIONEERS
Cotswolds Heritage since 1862
Complimentary Auction Valuations
Monthly Auctions of Art & Antiques
Probate & Insurance Valuations
Open Valuations every Thursday
9.30am-1pm
01452 344499 info@chorleys.com
Prinknash Abbey Park GL4 8EU

FAMILY TREE FUNERAL COMPANY
No.1 Middle Street • Stroud GL5 1DZ
A family-run independent business
with a fresh approach to funerals
End-of-life planning and support
01453 767 769
email: contact@familytreefunerals.co.uk
WWW.FAMILYTREEFUNERALS.CO.UK

Dr Hauschka Organic Facials
Your friends will ask enviously
if you've "had work done..."
But you'll smile secretively,
knowing you look great, naturally.
Book yourself a Dr Hauschka treatment
with **The Organic Beautician**
and treat your skin to the visible difference
text 07961 224560
jane@theorganicbeautician.com
Mention this ad when booking for a free Cleansing Cream
Based in Pitchcombe since 2007

St Michaels BISTRO
Lunches: Wed - Sun 12.00 - 15.00
Evenings: Tue - Sun 18.30 - 22.00
tel: 01452 203306
07877 282 446
marinpetre1967@gmail.com
Take-aways available



Wick-Flix returns in July with **The Lesson**, a thought-provoking and emotionally-charged film that takes viewers on a gripping journey of self-discovery and moral dilemmas.

The story revolves around a dedicated and passionate high school teacher, Mr. Johnson, who becomes deeply invested in the lives of his students. As the film unfolds, Mr. Johnson faces a series of challenges that test his principles and beliefs. He discovers that one of his students, a talented and ambitious young man named Mark, is involved in a dangerous and illegal activity. Faced with the choice of turning a blind eye or taking action, Mr. Johnson grapples with the ethical implications of his decision.

Throughout the film, the choices of Mr. Johnson's choices impact himself, his students, and the community. The film has powerful performances and a compelling narrative and offers a gripping exploration of the complexities of teaching and the profound influence that educators can have on their students. It challenges us to reflect on the choices we make and the impact they can have on those around us.

The Lesson stars Daryl McCormack, Richard E Grant and Julie Delpy and will be showing on Friday 12th July with doors open from 7pm. Wick-Flix takes its customary summer break in August but will be back on the second Friday of September.

Ceri Chaplin

News from the Painswick Centre

This month we will bid farewell to one of our artists in residence, Isabella Hughes. We would like to wish her well for her future work and creativity. We're pleased to announce that we will be having a new artist joining us in the near future - more information to follow!

Food nights coming up on Thursday's in July between 5pm and 8pm:

- 4th July - Dirty boys,
- 11th July - Maasi kitchen,
- 18th July - Hungry monkey,
- 25th July - Burgerlish.

Ceri Chaplin

Painswick Community Support

Advance Notice!

We are pleased to be holding another Community Summer Event in August to which all are welcome.

Look out for more details and ways to book on posters around the village and social media from July onwards.

Delyth, Abigail, Louise and Hannah

Friday 12th July
The Painswick Centre

Doors and bar open from 7.00pm. Screening starts 7.45pm

Lead Sponsor Estate Agents

Entry £10

Including one drink. Payment on the door
- cash or card.

Want to advertise here?
a few spaces are now available
For more details, please contact:
Peter Rowe
01452 813228
advertising.beacon@painswick.net
or visit our website
www.painswickbeacon.org.uk

Annie's Gardening
An extra pair of helping hands
General gardening services
Beds and borders services
RHS level 2
07899 958436
Email: anniesgardening2@gmail.com
Website: www.anniesgardening.co.uk

Peter Barnfield
Painter & Decorator
All Interior, Exterior + most DIY work
30 years experience

Tel: 01452 610199
Mob: 07881 408380
Email: Barnfield.peter2@gmail.com

PAINTING & DECORATING
Domestic & Commercial
Internal & External
Gloucestershire & Cotswolds
Based in Painswick
Detailed quotes
Fully insured
Call Ken Ticehurst
07808 511066
glospaint.co.uk

Library News

The Library Challenge 2024



Calling all parents, grandparents and children – The Library Challenge will start on July 27th, and will run through to 14th September. The challenge is suitable for all children over 3 .

THIS YEAR’S THEME: SPORT

All activities are free!

Sign up with us at Painswick Library, or at any other Gloucestershire library or online at gloslibraries.uk.

Explore the Tasks in the challenge – there’s something for everyone! Collect Stamps! Show completed tasks to our friendly library team. Special rewards await at each level! We will be adding extra, special prizes for Painswick.

SPORTS FESTIVALS

This summer, Gloucestershire Libraries are hosting two multi-sport festivals alongside The Library Challenge.

Meet and play with local organisations like Gloucester Rugby Charitable Community Foundation and Cheltenham Town Community Trust.

Book your free ticket now at gloslibraries.uk

Friday 9 August 11:00 - 16:00

Kings School Sports Field, Gloucester, GL1 2TF

Friday 30 August 11:00 - 16:00

Oakwood Primary School, Cheltenham, GL52 5HD

Ian Cridland

Library book club



In June the Library Book Club read and discussed Ceremony of Innocence by local author Madeleine Bunting. We all agreed that it was a most absorbing novel in terms of storyline, themes and of characters. The narrative spanned over half a century and was set in the Shah’s Iran; Bahrain and modern day England and was told through the eyes of several intriguing female characters.

We were delighted that Madeleine joined us during our meeting and addressed many of the questions that our discussion had raised. We were interested in learning that the themes of the novel came from her studies of History at Cambridge and her interest and knowledge of post colonialism and corruption in the murky world of power politics, both in the past and present day. Thank you Madeleine for a most illuminating and interesting talk. For anyone that has not yet read one of Madeleine’s novels, we would certainly recommend this one.

Our next meeting is scheduled for Monday 8th July and we will be discussing Shrines of Gaiety by Kate Atkinson. Following that we will meet on Monday 12th August to discuss Homecoming by Kate Morton. Both meetings are 1.30-2.30pm.

New members are always welcome. For further information email painswick.librarybookclub@gmail.com

Pat Andrew



Paul Morris Builder Limited


Extensions - Renovations
New Builds
Kitchens & Bathrooms
Landscaping
Electrics - Plumbing

01452 814524



07818 087375

paulmorrisbuilderltd@gmail.com
www.paulmorrisgeneralbuilding.co.uk



GODDARD'S GARAGE
Cheltenham Road, Painswick

- * Full servicing & repair facilities
- * MOT preparation & repairs
- * Private hire - taxi
- * Petrol / Diesel / Tyres / Exhausts
- * Paraffin / Coal / Calor Gas
- * Car valeting
- * Air conditioning

Personal attention for your car

01452 812240
goddards.garage@hotmail.co.uk

GROUNDWORKS - DRAINAGE
EQUESTRIAN WORKS
LAKES - PONDS - WATER FEATURES
FENCING - DECKING - HEDGING
DRIVEWAYS - PATIOS
TRADITIONAL BUILDING WORK
ALL PASSIONATELY UNDERTAKEN

GROUNDWORKS LANDSCAPING



PLEASE CONTACT
BEN LIVING
01452 812036
07702 984711
enquiries@blc.uk.com
www.blc.uk.com

Geoffrey Clifton -Brown Conservative



“I was first elected as an MP for Cirencester and Tewkesbury in 1992, giving me the experience and knowledge to get things done!

I secured the £500 million A417 ‘missing link’ scheme and the rollout of fast broadband to 96% of the Cotswolds. I will work alongside local communities to deliver the necessary infrastructure including doctor’s surgeries, schools, and well-maintained roads.

As a farmer, I am passionate about protecting our rural way of life and the environment. I hold biannual public meetings with key stakeholders to tackle flooding and river pollution. I pledge to harness advanced technology to boost renewable energy production, improve sewage treatment, river quality, and reduce flooding.

I lobbied for a record £5 million in extra funding for our local schools, resulting in improved standards in Maths and English. I will continue campaigning to improve education standards, support funding for special education needs, and promote apprenticeships and T-levels.

Health is a priority, and I commit to working with the NHS to reduce waiting lists, improve neonatal performance, and enhance social care.

To address the cost of living, I will press for lower taxes, interest rates, and energy costs, while advocating for increased production of home-grown food.”

Anna Mainwaring Labour



The Cotswolds is my home and where I have raised my family. I am a journalist and TV producer. I’ve worked for the BBC, ITV and Channel 4. I’ve also been a union leader for the NUJ and represented journalists across the country. When my son was younger I was a school governor at his local primary school here in the Cotswolds.

It is an honour to have the opportunity to represent this beautiful area where I live. North Cotswolds is a fantastic place and deserves an MP who will represent it with pride and put its residents first. I want to use my skills and experience to make a real difference to people’s lives here. We need to tackle the cost of living crisis, create better quality jobs locally, protect our green countryside and tackle the climate emergency. We need to invest in our towns and high streets, stand up for small businesses and our farmers. We also need to ensure our schools and the NHS are fit for purpose. My job would be to serve you and raise your concerns in Westminster if elected as your MP. If you live in North Cotswolds and want to get in touch please don’t hesitate to contact me for a chat, raise an issue, or to ask any questions email Anna4NorthCotswolds@gmail.com

You can also follow me on X (Twitter) “@annainwaring” and on Facebook “Anna North Cotswolds” Anna4NorthCotswolds@gmail.com

Resthaven offers 24 hour residential and nursing care set amidst some of the finest countryside in Gloucestershire with panoramic views over the Painswick valley.

For more information please call **01452 812682** or, visit: www.lilianfaithfull.co.uk/resthaven

Resthaven is part of the charity Lilian Faithfull Care
Registered Charity No: 1122183

LILIAN FAITHFULL CARE

Exedra Nursery

Specialists in perennials
David Austin Roses
Climbers, alpines, shrubs & herbs
Peat free compost
Gardening accessories & gift vouchers

PAINSWICK ROCOCO GARDEN
OPEN TUES - SUN 10 - 4
07487 537026

Paul Hodgkinson Liberal Democrat



It was during his time at university that Margaret Thatcher came to power as British Prime Minister. Paul’s early political instincts were shaped in opposition to Thatcher’s dismissal of ‘society’, the sharp rise in unemployment, and social unrest that broke out across the country.

Paul has continued to fight against the Tories ever since – helping grow the Liberal Democrat opposition on both Cotswold District Council and Gloucestershire County Council, and challenging our local MP – a backbench Conservative who has been in place for three decades – to account.

Standing in this election he is the only viable alternative to the Tories, seeking to end the stranglehold they have on the North Cotswolds and the country.

Restoring civic pride
Whilst he has stood up for local issues such as road safety, recycling and river pollution over more than two decades, he has also run his own successful business inspiring others to unlock their leadership potential.

Paul has consistently used his platform as a councillor and candidate to promote the voices of local communities.

From fixing potholes in Perrotts Brook where he lives, to campaigning for the missing link of the A417 at Birdlip, to calling out missed targets in our NHS, Paul takes a practical approach to improving our local area.

His campaign is about restoring civic pride, and inspiring others to play a role in the future of their community.

Chloe Turner Green Party



Chloe said: “The widespread disenchantment with the Tory government among many moderate Tory voters means that the Conservatives cannot be complacent about winning the North Cotswolds seat.

“As MP, I will be a voice for nature and a champion for local issues, including tackling the decline in rural public services and the cost-of-living pressures facing so many residents.”

“Importantly, as a Green I do not have to follow a party whip so will be free to represent the concerns of residents. I will be an independent, principled MP who will work collaboratively with others, who will never be afraid to offer constructive scrutiny and to hold those in government to account.

“This year, there is a real opportunity for genuine change in the Cotswolds, for the first time in decades. It’s an exciting chance to restore trust in politics and I’m ready to be at the heart of it.”

A qualified chartered accountant by background, though politics is now her full-time work, Chloe is involved in numerous local groups and campaigns.

CLARICO EXTERIOR CLEANING

WINDOW CLEANING
High reaching water-fed pole system (suitable for delicate windows)

SOFFITS, FASCIAS & CLADDING
GLASS VERANDAS
CONSERVATORIES & ALIKE
SOLAR (PV) PANELS

E5 Million Public Liability Insurance

Husband & wife team, Dan & Lois

"We'll always notify you the day before we're due"

T: 07552 398638
claricoexteriorcleaning@gmail.com
www.claricoexteriorcleaning.co.uk

IRONEASY

Professional Ironing,
Dry cleaning, Laundry,
Repairs/Alterations
& Shoe repairs

COLLECTION & DELIVERY AVAILABLE

Tel: 07952006820
www.ironeasy.biz

Open from Sun weekdays, 9am Sat, 10am Sun

Coffee / Clothing / Gifts
meadows-store.com

meadows

ST MARY'S ST
GL6 6QG

ALLPRESS
ESPRESSO

MEADOWS PAINSTWICK

Jean Blackbeard Independent



I have lived in the North Cotswolds and been part of the community for almost 20 years, taking on various roles, including single parent, volunteer, campaigner, and business owner. I have been actively involved in serving my community through my business since 2018. As a result, I was invited to stand for the local elections and was elected as a member of Moreton-in-Marsh Town Council in May 2021.

I love parenthood (although now an empty-nester), people, learning, being of service to others, pursuing peace and expeditions. As your independent representative in Parliament, I am dedicated to serving you tirelessly on a full-time basis. I will be a voice for the voiceless and remain accessible, local, and engaged while advocating for justice and peace. I will support life-changing proposals based on merit and public vote, conduct thorough research and analysis and refuse to loosen my grip on the truth. I will strongly advocate to:

- * Alleviate the contributing factors of hidden rural hardship *
- Revamp and reinstate rural public services and infrastructure *
- Reduce rural greenfield housing development *
- Restore and realign our national government machine

Printed in Gloucester
for
The Painswick Beacon
by
www.inkylittlefingers.co.uk
01452 751900

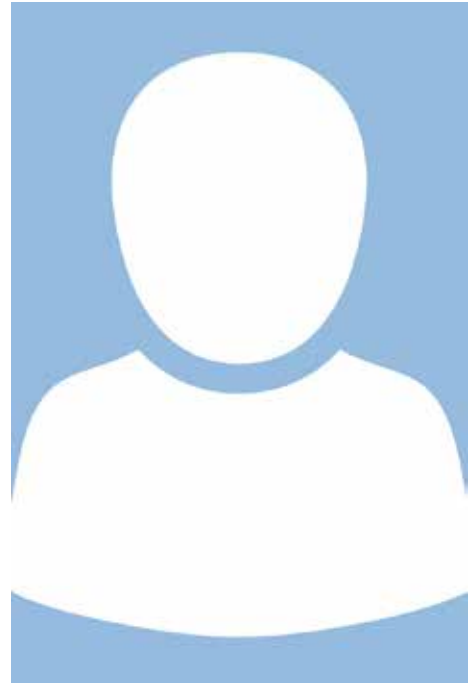


CBS
PAINSWICK BASED
INSURANCE BROKER
PERSONAL & COMMERCIAL COVER

Contact Adrian Gyde on
07770 881 695
www.cotswoldbroking.co.uk



Jason Preece Reform Party



Jason Preece has been asked on repeated occasions for a personal statement and a picture. At the time of going to print there has been no response. Likewise on the Reform Party web site there is no information on their candidate.

CENTRELINE
STONEMASONRY
HISTORIC
BUILDING
REPAIRS
& ALTERATIONS

01452 813892 OR 07967 316038
WWW.CENTRELINESTONE.CO.UK
Fairfax House, Vicarage Street, Painswick, G16 6XS



Cherry Tree Glamping

Four beautiful and fully-equipped lodges, each with a hot tub on the veranda.

Adjacent 2 acre campsite with 19 electric hook-up points and huge communal area.

Available individually or either site exclusively for weddings, special birthdays or family get togethers. Showers and toilets.

Please call Bev: 07717 721213
www.cherrytreeglamping.co.uk
Sunflower Cafe:
Tuesday-Sunday 07341 903745



PAINSWICK HOME & GARDEN

Renovation & Maintenance

- Lawns, hedges, fences, borders
- Landscaping, paving, stonework
- Bespoke-built log stores & bin stores
- Decorating, home repairs & lots more!

Find Us on Facebook **Call: 07532 111114**
www.painswickhomeandgarden.com



BANCROFT LIVINGSTON
— BATHROOMS —

Bespoke bathroom design and installation

jake@blbathrooms.co.uk
www.blbathrooms.co.uk




Football at the Recreation Ground

The Painswick football club have unfortunately decided to move away from Painswick as the sloping pitch was not ideal. They kindly left the two goalposts behind however the annual Playground safety audit found them both to be rotten and unsafe. They were then removed.

The new football goal

The Croft School Council asked the Parish Council if they would finance and install a reduced size goal. This was approved and the new goal installed (see picture). However as seen in the adjacent letter to the Beacon this new goal is only suitable for young children and does not meet the needs for the teenagers and indeed any adults of Painswick.

New full size goal posts

Painswick really needs an adult sized goal and representation should be made to Abigail Smith of the "Play Painswick" committee. Through this route the Parish Council might consider another full sized goal if there is sufficient demand..
abigailsmith@painswick-pc.gov.uk



New football goal

Ernest (Nesty) Coles of Painswick writes

...I have lived in Painswick all my life and have adored football all my life. I am 14 years old and go to Cirencester Deer Park Secondary School and play for Eastcombe FC. On entering Painswick park this weekend, I was shocked and upset to find the goalposts had been completely removed. I'm writing to you now to explain the importance of football to my generation in our community,

Firstly, football is the world's leading sport with just over 5 billion avid fans globally, overtaking any other sport by a significant margin. Every day when I go to the park it is usually the highlight of my day. Moreover, I have met many of my friends - in the village and beyond - through the sport and wish to continue to make many more. There is only one place to play football in Painswick. By taking down the full-size posts and replacing them with much smaller five-a-side ones it limits the community's access to the practise necessary to playing football at a competitive level.

Secondly, playing football is exceptionally good for not only our physical health but also our mental health. Taking down the regulation size goalposts significantly impacts my generation's ability to practice the sport we love. In conclusion, I hope this letter provokes an effort to recognise the importance of football for our ever growing and widening community.

The inclusion of letters, maximum 150 words, does not imply that the Beacon committee endorses the views expressed, or otherwise.

SALLY ELLWOOD
LIME
Lime wash, pointing, render and plaster
for period and listed buildings.
Art and design.
Tuition and consultancy.
07940 108 333
www.sallyellwood.com
info@sallyellwood.com

HUNTER • PEARCE
D E C O R A T I N G
Reliable and Professional Service
Interior and exterior work
Paint and colour advice upon request
— CONTACT —
☎ 07733434773
✉ info@hunterpearce.co.uk

**ADC PRIVATE HIRE
(TAXI)**
Andy Cox
01453 755707
07966 235775
All Destinations
www.taxis-stroud.co.uk
adcprivatehire@btconnect.com

Abigail's challenge achieved

You may recall in the May edition the account of Abigail's imminent, and definitely daunting, challenge in aid of the Multiple Sclerosis Trust. She and her husband Gary, who was diagnosed with the condition four years ago, have had to make many changes in their lives since the diagnosis and have truly appreciated the help given by the Trust to the family. Abigail wanted to give something back and decided to undertake what for her was a truly big challenge – an overnight walk from the base to the top of Snowdon and back again.

Well, it was a resounding success. And here is her account of the event in which she took part with her sister.

'We did it and are still standing! Our trek up Snowdon overnight was definitely a challenge but my sister and I were pleased we put in the training which meant it was still mostly enjoyable. There were a few unexpected elements that made the last third of the ascent and descent interesting, including lots of loose stone underfoot, sudden cloud cover and strong winds bringing a windchill of -6!



Unusually it would seem for Snowdon, we had the summit to ourselves as we got there around 1am. We set off just before 10pm and got back around 4am, so we also had the benefit of seeing the sunset and sunrise. It was magnificent!

Between us we have raised over £3000 for the MS Trust and are so grateful to everyone who has donated. It really did spur on our training efforts and made bracing the summit even more worth it. Thank you so much to all who have supported us, with donations, encouraging words and kind thoughts.'

Abigail has done and continues to do so much for Painswick in her various roles and now this Snowdon challenge has proved to be a remarkable personal achievement. As she points out, multiple sclerosis is a life-changing condition affecting the whole family and can befall anyone. It is not too late to donate for this very worthwhile cause and by so doing perhaps also show our appreciation of Abigail's commitment to Painswick. You can donate via her Just Giving page [Abigail Smith is fundraising for Multiple Sclerosis Trust \(MS Trust\) \(justgiving.com\)](#)

Carol Maxwell



Dates For Your Diary.

Part of the constitution of our recently formed charitable status is that we become involved in community engagement and education.

We are therefore offering two guided walks, both starting at 10:00 from the Rambler's Car Park, along side the lower plantation. The first is on Friday 12th July and the second is on Saturday 20th July. Each walk should last between 2 – 3 hrs. We will explain why the calcareous grassland of the Beacon is so important and show good examples of it. More importantly, we will show areas that are in the process of recovery, having recently been cleared of heavy scrub and secondary woodland and areas which are showing the positive effects of regular grazing.

We try to limit the group size to five or six so please book early so that we may arrange sufficient walk leaders. My details are: pm-baxtersfm@gmail.com 07971 633 242.

The walks are free, but if you enjoy it a healthy donation to our funds would always be appreciated!

If you cannot make the above dates or find the walking too arduous, then I will be giving a power point presentation at Painswick Golf Club on Tuesday 30th July at 19:30 The title of the talk will be "Is Conservation Still Relevant?" The bar will be open from 19:00 for coffee and drinks.

Once again this is free, but booking is not essential as there is plenty of space in the club house. There will be opportunity for questions either during the talk or afterwards.

The final date is for our Annual Meeting. It is a long way off, but last year we left it extremely late to put the notice out! It will be held in the Town Hall on Thursday 19th September at 19:00. This is your opportunity to hear what our group does, as questions, join and listen to our guest speaker, Andrew Commins from Natural England, talk about birds on the Beacon.

Paul Baxter

Painswick Rococo Garden

Welcome July with open arms and blooming beauty at Painswick Rococo Garden. From Wednesday to Sunday, join us from 10am to 5pm. As the school holidays blossom on the 22nd of July, we extend our welcome to every day of the week. No need for advance bookings—simply stroll in and soak up the charm. For those who wish to secure their spot, bookings are available, and don't forget to reserve an enchanting afternoon tea on our website.

Our garden is a kaleidoscope of colours and life, where flowers and pollinators dance in harmony. The kitchen garden, adorned with spectacular hops, is a sight to behold.

Discover the taste of summer with our exclusive summer ale, crafted with hops grown right here in our garden. This limited-edition brew is crisp and refreshing, best enjoyed slightly chilled on a warm summer evening. Complement your visit with our high-quality charcoal, made on-site using traditional methods. Don't miss our famed cheese scones, a delectable treat that draws visitors from near and far.

Enchanting Summer Evenings:

Comedy of Errors: July 4, 5 & 6 at 7pm Prepare for a whimsical evening with The Handlebards. Experience Shakespeare's 'The Comedy of Errors' like never before, with a bicycle-powered production that promises laughter and delight.

A Magical Evening of Opera: Friday, July 19, 6.15pm – 9.30 pm Let the melodies of Wild Arts transport you on a romantic journey. Set against the backdrop of the beautiful Bowling Green, this evening of opera weaves a tale of intrigue, jealousy, comedy, idealism, and pure love. Enjoy 75 minutes of your favourite opera classics, arranged into a symphony of musical enchantment. Join us this July and let the magic of Painswick Rococo Garden captivate your senses.

Marta Gardner

Painswick Friday Baby and Toddler Group Reopens!

After a hiatus, the Friday toddler group has moved to a new venue and have reopened their doors in Beacon Hall at the Painswick Centre! The play dough, play house and kitchen as well as the bikes proved very popular with many new faces joining the returning regulars! After singing the children's favourite nursery rhymes the bubble machine was brought out for a grand finale to end the session before we gathered for a commemorative photo!

Lots of different toys and activities including craft or sensory play are provided every week to cater for all the children's different favourites.

Please do come and join us every Friday during term time in Beacon Hall 9:30-11:30 (or drop in between nap times!) Under 1s £1.50, over 1s and families £3 per session, pay as you go. Bring snacks. Tea and coffee available in house or to order for delivery from the Arts Cafe next door.

Jessica Barnett



The HENRY WOOD proms and the EDINBURGH FESTIVAL are almost upon us, the former each year attempting more and more to be all things to all people. We should also note that Sir Simon Rattle, now our most lauded conductor, will be appearing with the Bavarian Symphony Orchestra, his new posting, having left the LSO at a time when London is failing to move forward to provide the capital with a concert hall equal to those already established in Birmingham, Tyneside, Manchester and Cardiff. He is also likely to continue to rarely programme our native composers who fortunately still dominate the 3 CHOIRS festival (July in Worcester). This is comparatively overlooked in the radio scheduling when the BBC exhaustively supports the Proms and Edinburgh.

We are fortunate in Painswick to have enjoyed 4 inspirational concerts from the Music Society in the Spring and PMAG which has just concluded a very successful season. The PMAG committee is already near to completing the programme for 2024/5. We shall see the return of a number of outside expert speakers as well as drawing on the enthusiastic contributions within our membership. There will be more details in forthcoming Beacons and we have booked to start the season on Thursday 19th September when we shall discuss the famous Elgar cello concerto, its history and performers.

I am sure that many Beacon readers would enjoy these convivial and relaxing afternoons. Please come along to the Town Hall and gave it a try.

Michael Grey

LIAM PHIPPS
General Builders & Stone Masons
'The complete building service'
 Extensions, Renovations, New Build
 Carpentry
 Roofing
 Kitchens
Liam: 07540 246133
liam.phipps@hotmail.com

Stepwise Foot Care.
 Mobile service in the comfort of home
 Medical pedicure.
 Hard skin removal.
 Corn removal.
 Re shaping and thinning of nails.
 Diabetic foot care and more!
 Don't struggle alone.
 Book now and let me help.
Call: Lizzy 07387 822770

Computer or Tablet Problem?
 Computer repairs & upgrades
 6 month health check ups
 Plain speaking tuition
 Internet security
 Remote support
 Wi-Fi solutions
 Easy backup
 Hints & tips
 Advice
 Help
Google
 ★★★★★
 5 star rating
Matt Hughes
07740 167318
www.pcprop.com
£45 ph Est.2003

Painswick Sports

assembled by John Barrus



Handball

What a handball season it has been for Holly Luke (21 yrs) former Croft School pupil. Holly had her first Handball session at the Croft School when she was 10yrs old. She went on to play for Stroud Handball club during her school years where they won the national finals for Under 16 and Under 19 teams. Holly was then sponsored by England Handball at the age of 18yrs to spend a year living and playing Handball in Denmark, gaining valuable coaching and match play experience in Europe where Handball is a popular and professional sport.

Holly was selected to represent GB Handball in the Under 17 & Under 19 age groups playing in Serbia, Portugal, Spain, North Macedonia, Turkey, Bulgaria and Ireland. Last year she was successful in being selected to play for GB senior women's team.

In April the GB team received a last minute wild card invitation to play in the Paris 2024 Olympic qualifying tournament in Hungary playing against Sweden, Hungary and Japan. This was an amazing experience for the young team playing in front of an arena holding 5000+ spectators. As an emerging nation GB didn't qualify but it was a great opportunity to play against professional teams. Holly has recently been asked to captain the GB team and heads off to North Macedonia this week for an international tournament and training camp playing friendly matches against Brazil and China.

In the UK Holly is the captain of the Loughborough Students handball team. This team has had a fantastic season winning the Premiership League followed by winning a very close and nail biting final against Olympia, a London based team, in the British Championship which was played in Edinburgh in May. Holly was interviewed for BBC Sport and spoke about how the team has developed as a 'handball family' over the season.

The season has now ended and Holly at the National Cup final weekend Holly received the 'Player of the Year award' from England Handball. What an achievement! She said to her previous GB coach that she thinks she has peaked in her handball career, his response was 'I think you have only just begun!'

Who knows what the future holds for this ex Croft student. We wish her well as she waves the GB flag for us here in Painswick.



Tennis

Two Painswick tennis club players were again runners up in the annual Speke Cup tournament in June. Angie Scott and Andrew Harris battled through 68 games, the equivalent of 11 sets, in the day long competition run by the Hill and Valley club. This year's event saw 46 pairs playing on 12 private courts around Chedworth. Angie and Andrew also reached the final in 2022.

Angie Scott



Lissey makes Wimbledon draw

Lissey Barnett has made the draw for Wimbledon in the doubles with Freya Christy. This follows a tough grass court season drawing the world number 3 at Nottingham and then drawing the world number 1 in Birmingham. So they are hopeful for a better draw at Wimbledon.

Landcare Services
Environmentally Sensitive
Tree Surgery
All Types of Tree Work Undertaken
Contact Zeb or Clare on
Phone 01452 812709
or 07969 918121
Clareoverhill@phoncoop.coop
WWW.Treesandlandcare.co.uk



**Mindfulness Based
Stress Reduction courses**
8-week small group or individual courses
Turnstone House Greenhouse Lane
Simon Robey MBAcC, MRCHM
for more information contact
turnstone2021@gmail.com
07799 742498
www.painswickacupuncture.com

ALL STONEMASONRY LTD
EXPERTS IN STONE

Drystone Walling; new and restoration
Stone repointing; including lime mortar
Mullion Windows Restored
Any stone repaired or replaced
Local masons with 40 years experience

01452 728949
alan@allstonemasons.com
For Your Quotation / Advice

Painswick Golf Club-

Catering now available again.

"Beacon Bar and Kitchen"

Mathew Twinning has now taken on the catering facilities at the golf club offering the full range from snacks to full meals.

Opening hours

Mondays and Tuesdays **Closed**

Wednesdays and Thursdays **Open 8am-4pm**
Breakfast and café service available 8am - 11.30 am Full menu 12 – 2.30pm

Fridays/Saturdays **Open 8am-11pm**
Breakfast and café service available 8am - 11pm Full menu 6pm – 9.30pm

Sundays **Open 8am -11pm**
Sunday Lunch 12 -5pm



Enjoy the wonderful views from the clubhouse with the large outside sitting area. Non golfers especially welcomed.

No reservations needed, except Sunday Lunch. All enquiries for event bookings phone 01452 812180 or email beacon-bar-kitchen@outlook.com

Painswick Cricket Club recent results in late May and early June.



Painswick First team (West of England Premier 2)

Painswick won by 55 runs against a much fancied Hatherley and Reddings. Luke Woolway 69 runs and Paul Conolly taking 5 for 35 were the main highlights.

Lost away to Chippenham CC by 1 wicket in a tight and close fought affair, Keegan Van Rensburg and Jono Connelly took 3 wkts apiece.

Lost to Goatacre by 6 wkts

Won away against Corsham by 6 wkts with Woolway (49) striking two sixes to win the match. Jono and Mathew Connelly picked up 3 and 4 wkts respectively.

Painswick Women's cricket

Painswick lost to Tetbury by 7 wkts with Francesca Cinderey top scoring with 25 runs for Painswick.

Painswick beat Stroud by 4 wkts with Isla Brown taking 3 wkts and scoring a super 22 runs and Captain Eva Holohan taking 3 wkts and scoring a valuable 9 not out to steer her side home

Lost to Cam by 17 runs, for Painswick Molly Hadfield, Kate Woolway and Lucy Walton all batted well with Lucy top scoring with 49.

Painswick Seconds (Gloucestershire County 7)

2nds lost to Cam 2nds by 6 wkts, Adam Wager scored 47 runs for Painswick.

Lost to Haresfield 1sts by 9 wkts.

Won against Oaksey by 5 wkts with Nath Fagg (4) and Ollie Moore (3) taking most of the wickets and Niall Galvin (25) and Freddie Hall (31) steering the club home.

Won against Lechlade 1sts by 15 runs, Jacob Moore (79) and Oscar Newcombe (31) the main run getters. Newcombe also took 3 wkts in what was a tight bowling display by all the Painswick bowlers. A close and exciting match in what appears to be a very closely matched league.

Painswick Thirds (Stroud District Div 2)

Lost to Kings Stanley 2nds by 8 wkts. Tigs Galvin 51 and Bruce Walker 70 were the main run getters.

Won by 8 wkts against Frampton 3rds, Walker top scored with 44 runs with Jack Holohan taking 5 for 22 runs in an outstanding bowling display.

Won by 131 runs against Chalford 2nds, Tigs and Walker scoring fantastic centuries.

Won by 10 wkts against Quedgeley and Hardwicke 4ths, Noel French taking 3 wkts and Tigs top scoring with 60.

The club continues to progress in both the National Village KO and the WEPL T20 cup. More on those competitions in our next report.

Steve Pegram

PLANNING MATTERS

Information received from the Parish Council

S.24/1118/LBC Rosemary Cottage St Marys Street Painswick Stroud Gloucestershire GL6 6QB

Status: Awaiting decision

Replace windows and doors. Replacement roof finish to earlier lean-to rear addition, internal alterations and erection of timber garden office.

S.24/1093/HHOLD Castle Lodge Cheltenham Road Painswick Stroud Gloucestershire GL6 6TU Status: Awaiting decision

Erection of a detached garage. Resubmission of expired permission S.21/0798/HHOLD

S.24/1049/MINAM Edgewood Longridge Sheepscombe Stroud Gloucestershire GL6 7QU Status: Awaiting decision

Non-material amendment to S.23/1339/FUL - amendments to fenestration. North garage elevation to be clad in Cedral cladding

S.24/0968/COU Court House Hale Lane Painswick Stroud Gloucestershire GL6 6QE Status: Awaiting decision

Change of use of existing outbuildings 'The Cottage' & 'The Stables' from C3 ancillary use, to C1 for self catering, short term holiday lets.

S.24/0934/TPO Trees St Marys Mead Painswick Gloucestershire

Status: Application Approved

T1 Horse Chestnut - Crown reduction by 2m

S.24/0915/CPL 32 Ashwell Painswick Stroud Gloucestershire GL6 6RL

Status: Permitted

Erection of a single storey rear extension and front porch

S.24/0943/DEM Beechwood Cheltenham Road Painswick Stroud Gloucestershire GL6 6TU Status: Awaiting decision

Demolition of old timber shed with corrugated tin roof

S.24/0906/DISCON Land Between 15 And 16 Upper Washwell Painswick Gloucestershire

Status: Awaiting decision

Various tree work

S.24/0905/TPO Castle Hale Stamages Lane Painswick Stroud Gloucestershire GL6 6UY Status: Awaiting decision

Internal alterations to form a new open plan kitchen/dining room, including the lowering of the ground floor level.

S.24/0898/HHOLD Woodridge The Highlands Painswick Stroud Gloucestershire GL6 6SL Status: Awaiting decision

Erection of boundary walling and gates

S.24/0897/DISCON Woodridge The Highlands Painswick Stroud Gloucestershire GL6 6SL Status: Awaiting decision
Discharge of condition 3 (details of render) from S.21/1407/HHOLD

S.24/0884/LBC Holcombe House Painswick Stroud Gloucestershire GL6 6RG Status: Awaiting decision

Alterations to house, coach house, barn, pool house & landscaping

S.24/0883/HHOLD Holcombe House

Painswick Stroud Gloucestershire GL6 6RG Status: Awaiting decision

Alterations to house, coach house, barn, pool house & landscaping.

S.24/0866/LBC Dover Cottage Vicarage Street Painswick Stroud Gloucestershire GL6 6XS Status: Awaiting decision

Replace existing timber framed casement windows with like for like timber casement windows.

Property report

Several houses in the £300,000 to £600,000 range have come to the market in Painswick this month, including both stone-built listed properties and more modern ones. In the second category, 12 White Horse Lane (Murrays, £385,000) is a 3 bed semi-detached family home in need of some modernisation, while 4 Berry Close (Hamptons, £325,000 – already under offer) is a mid-terraced 3 bed property. Even more contemporary is 4 Painswick Heights (Murrays, £575,000), open plan living with a balcony overlooking Painswick, converted from the former Squash Club building.

Older stone properties include Cotswold Villa in Gloucester Street (Hamptons, £585,000), a detached Grade II listed house close to the Croft School, Wayside in Victoria Street (Murrays, £400,000), a double fronted cottage in the heart of the village, and Pathways (Murrays, £500,000) a detached 2 bed cottage, also very central, but hidden away off Tibbiwell.

Further out from Painswick and in a different price range, is Hillfield (Hamptons, £1.6m) on the quirkily named Grunters Lane, which tumbles down the Cotswold escarpment from Edge. This detached property comes with 15.6 acres of pasture and far-reaching views over the Severn valley. Then up on Painswick Beacon, Bears Den, a modern detached house with 4 bedrooms, great views and a self-contained annexe, benefits from a recently reduced price (Hamptons, £1.175 million).

Grey Cottage in Edge and 4 Berry Close have both gone under offer this month through Hamptons and contracts have been exchanged on Cockshoot House. The sales of Dormer Cottage in Butt Green, Stonewyck in Cheltenham Road, Macs Cottage in Kingsmill Lane, Ludloes in Gloucester Street, The Cup House in Bisley Street and Wragg Castle Farm in Pitchcombe, have all completed.

Sponsored events

Murrays were sponsors of the **Painswick Ball** and offer their congratulations to the organisers of this fabulous event. Hamptons thank everyone involved with the **Painswick Open Gardens** event that they organised at the end of May, and which has raised the astonishing total of £6,367 to date for the mental health charity, Mind. Both great examples of the involvement in the community of our local estate agents.

**WITH YOU
FOR EVERY
STEP**

Sales 01452 812354
Lettings 01242 263559
painswick@hamptons.co.uk

Hamptons
THE HOME EXPERTS

MURRAY'S
SALES & LETTINGS

Leading property agents for the
Stroud Valleys and Severn Vale

We pride ourselves on our personable and professional approach, offering new and innovative ways to market your home

Contact James or Richard Murray

Offices in Painswick,
Stroud, Minchinhampton
and Mayfair, London



Painswick office: 01452 814655
www.murraysestateagents.co.uk

Regular Village Activities. Please contact Vicky Aspinall on cvasp.26@gmail.com

Mondays	Gentle pilates. Info from Heidi 07970 262538	Painswick Centre	8.45 - 9.45am
	Improvers pilates. Info from Heidi 07970 262538	Painswick Centre	9.50 - 10.50am
	Beginners/improvers pilates. Info from Heidi 07970 262538	Painswick Centre	10.55 - 11.55am
	Ballyhoo modern dance classes (primary grade modern). Info from Julie ballyhoochalford@gmail.com	Painswick Centre	from 3.45pm
	Community Choir. Contact sophie@sophiesterckx.co.uk	Painswick Centre	7.00 - 8.30pm
	Short Mat Bowls. All equipment provided. 2.00/session	Town Hall	2.00 - 4.00pm
	Mindful Meditation with Kate. www.kate-beatty.co.uk/07793126234	Painswick Centre	12.30 - 1.00pm
	Painswick Singers . Contact Jean Jones 01452 813545.	Richmond	7.30pm
	Paradise Art Studio evening classes. Contact takepart@paradise-house.org.uk	Paradise House	6.30 - 8.30pm
	Painswick Bootcamp. Details contact Becca Meadows 01452 451505 or info@beccameadowsnutrition.co.uk	Broadham Field Rugby Pitch	7.30 - 8.30pm
Tuesdays	Drawing Classes in a block of six lessons. Info from Hannah Dyson at www.hannahjdyson.co.uk or dyson_hannah@hotmail.com	Church Rooms	10.00 - 12.00pm
	Zumba with Martina 07891 194396	Painswick Centre	9.45 - 10.45am
	Painswick Art Club	Church Rooms	9.30 - 1.00pm
Wednesdays	Rococo Sprites. See www.rococogarden.org.uk	Rococo Garden	9.45 am
	Strength and Balance class for the over 60s. Contact Trish Tenn on 07956 4666617 or tennpatricia@gmail.com	Painswick Centre	10.00 - 11.00am
	Painswick Bridge Club. Contact Peter Sibley on 812126 or Margaret Wilson on 812305	Church Rooms	6.45pm
	Table tennis. Contact David Harris on 07453 027766.	Painswick Centre	7.30 - 9.00pm
	Yoga with Kate. www.kate-beatty.co.uk/07793126234	Painswick Centre	7.30 - 8.45pm
	Classical Pilates Mat Classes with free taster. Contact Jo on 07968 799741 or info@daleypilates.co.uk	Painswick Centre	10.30 - 11.30am
	Strength and Conditioning Circuits. www.lovelifeladies.co.uk	Painswick Centre	12.30 - 1.30pm
Thursdays	After school art classes. Email classes@painswickcentre.com . Term time only	Painswick Centre	3.45 - 5.15pm
	Morning Market	Painswick Centre	8.30 - 9.30am
	St Mary's Mums - for mums, bumps, babies and toddlers. Contact 07833 727701. Term time only	Church Rooms	9.15 - 10.45am
	Nurturing yoga. Contact Kim on yoginikim@icloud.com	Painswick Centre	9.30 - 11.00am
	Vinyasa Yoga. Contact Kim on yoginikim@cloud.com	Painswick Centre	11.15 - 12.45am
	Tai chi. Contact Joe on 07960 753782	Painswick Centre	1.30 - 2.30pm
	Dog Training Club. Contact Fiona Chapman on 01452 812462 or fiona.chapman123@btinternet.com	Painswick Rugby Club	9.30 - 12.30pm
	Qi Gong Classic Exercise - contact Jeff Docherty on jeffdocherty@yahoo.com	Town Hall	9.30 - 10.30am
	Classical Pilates Mat Classes. Contact Jo on 07968 799741 or info@daleypilates.co.uk	Town Hall	5.45 - 6.45pm
	Takeaway Food Night	Painswick Centre	5.00 - 8.00pm
Fridays	Yoga for Backs. Contact Kim on yoginikim@icloud.com	Painswick Centre	9.30 - 11.00am
	Ballet with Claire Tracey. Contact BalletClaire@outlook.com	Church Rooms	9.30 - 10.30 am
	Painswick Community Hub Café: serving tea, coffee and homemade cakes. All welcome	Town Hall	10.00 - 11.30am
	Church Choir Practice. Contact Chris Swain cgsvain@btinternet.com or 01453 822998	St Mary's Church	5.30 - 6.30pm
	Classical Pilates Mat Classes. Contact Jo on 07968 799741 or info@daleypilates.co.uk	Church Rooms	11.00 - 12.00pm
	Tea, cake & watercolours art course starts April 4th for 6/wks	Painswick Centre	2.00pm
Sundays	Painswick Baby and Toddler Group - Term time only	Youth Pavillion	9.30 - 11.30am
	Mass	Catholic Church	8.30am
	Quaker Meeting for Worship	Meeting House	10.30am
	Aikido www.gloucestershireaikido.club .	Painswick Centre	8.30 - 11.00am

Village Diary

Please let me know your club and society dates for the diary on cvasp.26@gmail.com

June			
Sat	29	Painswick Beacon published	
	29	Paradise House Open Day	Paradise House 1.00 - 4.00pm
Sun	30	In praise of creation - Benefice Celebration songs of praise	St Mary's Church 6.30pm
July			
Tues	2	Morning Prayer	St Mary's Church 9.00am
Wed -	3	Beacon Prayer	Via Zoom 9.00am
	3	Holy Communion	Richmond 11.30am
Wed -	3,4,5,	Handlebards - Comedy of Errors. Book in advance. Check website rococogarden.org .uk	Rococo Garden 7.00pm
Fri			
Thurs	4	General Election	
	4	Painswick Probus: Royal Photographer and trains - Jack Boskett. Meeting followed by wine	Painswick Centre 11.00 for 11.30am
Fri	5	Friday Club: Tudor swearing, sex and loos! As NOT seen on TV - Kirstie Bingham. Enq 812942	Town Hall 2.30pm
Mon	8	Library Book Club	Library 1.30 - 2.30pm
Tues	9	Morning Prayer	St Mary's Church 9.00am
	10	Gardening Club: Climbing Plants - Andy Jeanes	Town Hall 7.00 for 7.30pm
	10	Beacon Prayer	Via Zoom 9.00am
	10	Holy Communion	St Mary's Church 12.00 pm
Thurs	11	Arts Society: Isabella D'Este First Lady of the Renaissance - Paula Nutall	Painswick centre 10.00am for 10.45
Fri	12	Wickflix - The Lesson	Painswick Centre 7.00 for 7.45pm
Sun	14	Family Worship	St Mary's Church 11.00am
Tues	16	Morning Prayer	St Mary's Church 9.00am
Wed	17	Beacon Prayer	Via Zoom 9.00am
Thurs	18	Painswick Probus: Throwing Light on Light - Gerald South.	Painswick Centre 11.00 for 11.30am
Fri	19	Friday Club: Presidents tea party. Enq 812942	Yew Tree House 2.30pm
	19	Wild Arts present Opera on the Bowling Green. Book in advance. Check website rococogarden.org.uk	Rococo Garden 6.30pm onwards
Sat	20	The Enchanted Garden trail begins. Pre booking recommended. Check website rococogardem.org.uk	Rococo Garden 10.00am - 5.00pm
Sun	21	Deadline for Beacon Copy	
	21	Holy Communion	St Mary's Church 11.00am
Tues	23	Yew Trees WI: Stroud Women's Refuge	Church Rooms 7.00 for 7.30pm
	23	Morning Prayer	St Mary's Church 9.00am
Wed	24	Beacon Prayer	Via Zoom 9.00am
Sun	28	Beacon Praise	St Mary's Church 11.00am
Tues	30	Morning Prayer	St Mary's Church 9.00am
Wed	31	Beacon Prayer	Via Zoom 9.00am
August			
Sat	3	Painswick Beacon published	

Entries for the Village Diary should be sent direct to **Vicky Aspinall** at: cvasp.26@gmail.com



Personal Column

Congratulations

To LAUREN RICHARDSON, formerly of Church House, Painswick, and GARETH PEERS, who were married in St Mary's Church, Painswick on 27th April.



Condolences

Also to the family and friends of JUDITH RUSSELL, who died in June. Judy lived in Vicarage Street in the same house where she had been born and where her parents, Arthur and Louie Swain, and her grandparents had lived before her. She will be much missed

You could help Vicky Aspinall, if you would send information about those you know for whom a mention in the Personal Column would be appreciated cvasp.26@gmail.com

MINI-ADS

For sale: Laura Ashley wing chair. Slight wear. Beige £200. Dinner & Tea Service. Eternal Beau. 82 pieces. Good condition. £150 Suitable for AirBnB etc. Tel Jill 07767 813791.

Mothercare baby bouncer for up to 6 month old babies. Hardly used. £15.00. Contact Vicky Aspinall on cvasp.26@gmail.com.

Childcare needed. Before and after school (7:30-9am, 3-5pm) 8hrs a week in total. Ideally suited to someone retired. Lovely friendly family of 4 boys. Contact 07734 923845 or danandbethport@hotmail.co.uk.

Mini-Ads

Primarily for Painswick residents. Text maximum 30 words. Flat charge £6. Free to subscribers for private sales. £6 for business use, holiday rentals. etc.

Provide text, your name, address and contact details with payment in advance. Deadline as for all copy. More info call Peter Rowe, or mail: advertising.beacon@painswick.net

Additional copies of the Beacon

are available from the Premier shop or online, where the Beacon can be seen in full colour at www.painswickbeacon.org.uk

NEXT ISSUE

Publication date

SATURDAY

3rd August 2024

**Deadline for all copy
Sunday 21st July**

www.painswickbeacon.org.uk
for current issue and archive, the annual directory and village maps.

for editorial attention only use beacon@painswick.net
or hard copy - preferably typed
Beacon post box - New Street

All copy must include author, address and contact telephone number. Photographs and advertising art work original at 600dpi in JPEG

The Beacon Team

Co-ordinating Editor this month

John Barrus 812942
beacon@painswick.net

Editing Associates

Peter Jackson 07985 002325
beacon@painswick.net
Alastair Jollans 814263
beacon@painswick.net

Next Month's Editor

Peter Jackson 07985 002325
beacon@painswick.net

Diary and Personal Column

Vicky Aspinall 812379
cvasp.26@gmail.com

Feature writer and Directory

Carol Maxwell 813387
features.beacon@painswick.net
directory.beacon@painswick.net

Sport

John Barrus 812942
barrusjp@yahoo.co.uk

Distribution

Celia Lougher 812624
distribution.beacon@painswick.net

Treasurer

Richard Aspinall 812379
treasurer.beacon@painswick.net

Advertising

Peter Rowe 813228
advertising.beacon@painswick.net

Subscriptions

Jacek Wolowiec 813295
subscriptions.beacon@painswick.net

BRIGHT & BEAUTIFUL
A BEAUTIFULLY CLEAN HOME AND A BRIGHTER YOU

HOLISTIC HOUSEKEEPING PURE ECO FRIENDLY PRODUCTS
STRICT SECURITY PROCEDURES TRUSTED TEAMS OF UNIFORMED STAFF

REGULAR CLEANS HOLIDAY LETTING CLEANING DEEP CLEANS

01452 401171
gloucester@brightandbeautifulhome.com

Chloe McCarthy BTEC Nat Dip

Revive Beauty
Chloe McCarthy
Tel: 07859 880641
revivepainswick@gmail.com

Painswick Beauty Room Three Gables Centre Cheltenham Rd
Tues 9.30 am - 7 pm
Wed 10 am - 2.30 pm

Cranham Village Studio * New Location *
Thurs 9.30am - 6pm
Fri 9.30am - 2.30pm

www.revivepainswick.co.uk
With eighteen years experience.



Painswick Ball

Pictures from the Painswick Ball held on Saturday 15th June at Broadham

