

The Painswick Beacon

Vol. 26 No.1

25th Anniversary edition

April 2003

750th Charter Anniversary



Service of Thanksgiving

The Parish Council extends a warm welcome to all parishioners to a Service of Thanksgiving on the 750th Anniversary of Painswick's Market Charter to be held in the Parish Church of St. Mary at 7.15pm on Tuesday 8th April.

Charter Dance

A dance in celebration of the granting of the Market Charter is being held in the Painswick Centre on Saturday 12th April at 7.30pm. The Band and O.U.R.S disco will provide the music.

Tickets which are £10 each and include a pig roast are available at the Post Office, Chancellors Tea Rooms and the Shetland Shop.

Charter steering group

There is to be a meeting of the Charter Anniversary committee on Tuesday 15th April in the lower room of the Town Hall. The meeting is scheduled to start at 7.30pm.

A warm welcome is extended to organisations/individuals who are considering participating in the events of the week 5th – 12th July 2003.

The Beacon hopes to be able to publish the programme of events for that anniversary week in the next issue.

What Charter?

John Bailey, Research Secretary of the Local History Society, examining the poor quality photo-copy of a section of the Charter Roll of Henry III. The Public Record Office at Kew seemed unable to do better than this. The Beacon agreed, it is quite indecipherable.



The initiative of the Society last year seems to have gained little, with or without the magnifying glass. If space permits, we will show more of the document next month.

However, in the 'Calendar of Charter Rolls', our attention was drawn to the first entry for 8th April 1253 of the "Grant to Warin de Munchanesy, and his heirs, of ... (among others) ... a weekly market on Thursday at his manor of Wyk, co. Gloucester, and of a yearly fair there on the vigil, the feast and the morrow of the Assumption".

All good stuff!

No Show

Readers will be disappointed to learn that the Beacon has received the following statement from Painswick Show Society Chairman, Bob Rumble:

"The siting of more than fifty young trees, and their protective surrounds, in the Park of Painswick House now render it impossible for the Painswick Show Society to hold the 2003 Annual Show there.

As a consequence it is very much regretted that the 2003 Show will not now take place.

The Painswick Show Society is confident that this will not spell the end of the Painswick Show and alternative possible venues are being investigated. The Beacon readership will be kept informed as soon as there is news."

The Beacon will be only too pleased to carry further information as soon as it is received.

Silver Jubilee and Thanks!

We are proud to be compiling our 301st edition of The Painswick Beacon, and to pay our tribute to voluntary organisations by publishing a supplement written by representatives of most of them in our area.

Without the continuing support received from contributors to the Beacon, subscribers, advertisers, distributors and many others across the years, we would not be able to maintain the service we try to render to Painswick.

This edition includes highlights from **25 years of Beacon production**, defining a **quality Parish Council**, traditional **May Day** fun, drafting the **Cotswold AONB Management Plan**, appointment of a **new Clerk**, gas and **Village of the Year**, counting our **garden birds**, invitations for the **Village Quiz**, correspondence on **affordable housing**, about the 51.7% increase in **Police budget**, **surgery equipment** funding, **trad skittles**, and a **remarkable reunion**.



Reports upon meetings of the Parish Council cannot help but be selective, if only because of space constraints. We try to draw attention to those of wider interest, but remind readers that the full minutes of Council meetings are available at the Council office on Wednesday and Friday mornings, as well as Painswick Library.

PLANNING COMMITTEE

Planning conditions - compliance

The Chairman, Malcolm Watts, drew attention to the aspect of concern expressed at the last meeting in that he saw a role for the Parish Council in monitoring the extent to which structures erected with conditions attached met those conditions. It was recognised that the District Council's officers could not monitor as closely as might be expected and that Parish Councillors might act as 'eyes and ears' to feed back information where non-compliance significantly conflicted with the expectations of both councils.


With the imminent installation of computer-controlled recording of data in the Parish office it was agreed that, progressively, the chairman should 'flag up' conditions which were considered of importance. The Clerk would remind the councillors of the need to check from time to time to see whether compliance had been effected.

PARISH COUNCIL

Appointment of new Clerk

The Chairman welcomed Roy Bolgobin who had been appointed as Clerk to succeed Peter Grant. Mr. Bolgobin spoke briefly to the Council about his career and how much he was looking forward to taking up his appointment. *(See expanded report on facing page.)*

Bledisloe v Calor




**SMITH
BROS.**

**GENERAL BUILDERS
AND DECORATORS**

- NATURAL STONEMWORK
- ROOFING - ALL TYPES
- NEW BUILD & EXTENSIONS
- ALL REPAIRS - MAINTENANCE WORKS
- ESTABLISHED 1956

2 Gloucester Street, Painswick,
Gloucestershire GL6 6QN
Telephone: Painswick (01452) 813051

The Council considered whether any of the four villages should enter the Bledisloe Cup this year, and whether to also accept the opportunity to participate in the Calor Gas Village of the Year competition.

These are distinctly different challenges. The Bledisloe Cup focuses entirely upon the upkeep of a village, while the Calor Gas one takes several aspects of village life into account. It was decided to enter the Calor Gas competition this year. *(See our detailed report on the next page.)*

Anti-social behaviour

There was discussion upon continuing reports of youngsters misbehaving in just about every part of the village, including theft and other matters relating to the Town Hall itself. Councillors supported the suggestion from Martin Slinger that the Council request the District Council to write formally to the parents of the troublemakers with the message that action be taken against them if conduct did not improve. It was agreed that the newly appointed police officer for this area be briefed by the Council and urged to take positive action directly or in association with other agencies.

Meanwhile the Council urges all residents to report each and every incident to the police so that they, in turn, build up a full picture of the extent of current disquiet.

Additionally, it was agreed to raise the matter with MP David Drew so that Home Office guidelines regarding action open to the police and others in relation to children of differing ages might be obtained.

750th Charter celebration costs

The Council received a written request for funding towards the cost of the Charter dance, insurance of the Charter market and hiring of a band to play during the market.

After some discussion it was agreed to purchase bunting to be used on this and future occasions.

Youth Club

Councillors noted that a detailed budget for expenditure upon improvements and building maintenance had not been re-

ceived from the youth club and, therefore, none of the substantial funding allocated by the Council had been spent. It was agreed to press the club for this information and early resolution of the matter.

Quality Parish Councils

Terry Parker reported having attended the seminar launching the QPC scheme by the Minister of State in London on the previous day. The Council reaffirmed its aspiration to emulate the standards laid down for such councils. *(See item on page 7)* Documentation associated with such standards and, hence, status were expected within the next couple of weeks. Alan Shearer enquired whether Painswick would be any better off as an area with such status but was reassured such should be the case, although yet another government initiative inevitably attracted some cynicism.

Information technology

Coincident with the changes in the Council's office, computing equipment and associated hardware was to be purchased within an already agreed budget. The Chairman was appointed to agree the equipment to be obtained and to determine with Mr. Bolgobin such training courses as were most relevant to his duties.

St.Mary's Home development - signage

Tony Crook drew attention to the proliferation of 13 signs and four flags, plus external illumination, on this site and enquired as to whether planning approval had been given. The Chairman undertook to investigate the matter.

THE
**PAINSWICK
HOTEL**
Country House Hotel of the Year

Curl up in a comfy sofa and relax in front of the log fire and enjoy the relaxed atmosphere that is the Painswick Hotel.

Open for Breakfast, Morning Coffee, Lunch, Afternoon Tea and Dinner prepared by our award-winning chefs.

If you have a special event why not make use of our Private Dining Room which can seat up to 18 guests, and is at no additional charge

Lunch
Served from 12.30pm to 2.00pm
2 courses £14 and 3 courses £17

Traditional 4 course Sunday Lunch £19.50

Dinner
Served from 7.00pm to 9.30pm
2 courses £26 and 3 courses £29.50

KEMPS LANE, PAINSWICK
GLOUCESTERSHIRE GL6 6YB
Tel: (01452) 812160
Fax: (01452) 814059
www.painswickhotel.com
reservations@painswickhotel.com

im² Computers

Personal and Business Computers
Gloucester based Free Delivery
12 months onsite warranty
Upgrades & Repairs carried out
See our website www.im2web.co.uk
Call **Tim Sheppard**

☎ 07798 693294 ☎ 01452 731779
✉ twigworth@im2web.co.uk

Village of the Year?

The strengths of community life are the key points to be judged in the Calor Gas Gloucestershire Village of the Year competition being organised through the Rural Community Council. The Parish Council decided that entering this and the Bledisloe Cup was a bit too much in one year, and that the Village of the Year challenge was worth entering. Where tried elsewhere in the country local communities were somewhat surprised at the extent of what went on around them. Our Supplement this month is testimony to Painswick's being in-with-a-chance in this competition.

County-wide judging takes place between 16th and 28th June. One village from Gloucestershire will also be chosen to be among 40 to enter the 'Calor Village of the Year for England and Wales'. There are substantial prizes to be won, ranging from £500 for villages in each region of the country to £6000 for the national winner. All helpful when it comes to precepts?

Judges will be looking in particular at "well-balanced, pro-active, caring village communities, which have made the best of local opportunities to maintain and enhance the quality of life for all inhabitants". The focus will be upon

- ◆ - Is there a strong community spirit?
- ◆ - Does your village have activities for every one?
- ◆ - Is there care for the environment?
- ◆ - Does the village take pride in its achievements?

Presentation of 'evidence' will be by a panel created by the Parish Council, and two hours are allowed for that interview.

Interesting?

The Beacon noted that, in previous years, the Council had voiced reservations about the Bledisloe Cup competition.

Roy soon to take over

Change is on its way at the Parish Council office. Roy Bolgobin, pictured here, will be 'shadowing' Peter Grant from 28th April May and will become Clerk to the Council from 1st June.

Roy and his partner Tina and five children live in Barnwood. He told the Beacon that he is very much looking forward to the challenging job awaiting him in Painswick. Born in Stroud, Roy, now 42, has lived most of his civilian life in Stonehouse and Gloucester. His career has been in the RAF in



personnel administration. Most of this service was divided between NATO headquarters in Belgium and Allied Forces Central Europe HQ in Holland. Two tours of duty were at RAF Innsworth where he also volunteered to help out with their creche, being inveigled into being Chairman of that sub-unit for several years; promotion indeed!

Hobbies start with coarse fishing and, now that his playing days are over, watching rugby. He and Tina are enthusiastic chasers of antiques, but Roy told the Beacon that their track record in spotting much of value is very poor.

Roy is anticipating the task of applying his knowledge of computer technology to the Council's affairs, as indeed are the Parish Council themselves. Moving many aspects of administration on to computer and making use of the Internet dimension will, he hopes, be progressively introduced in the early months of his appointment.

Affordable Housing

The 'story' we reported last month (front page - *Affordable housing setback?*) is far from over, and it seems possible that the Gyde Trust will give the matter of release of a small parcel of land further consideration.

We are now able to report that the independent report by Moore Allen and Innocent upon the 0.36 acres of land between the surgery and the barn conversion alongside the Cheltenham Road pointed out that the footpath crosses the site and a foul water sewer beneath that land reduced the area which might be used to 0.26 acres; this seemingly sufficient for only two pairs of semi-detached dwellings. The surveyors also pointed out that the land lies outside the development boundary of the village, is not allocated for housing in the SDC development plan, and their view that planning consent was unlikely to be granted. They went on to say that such a development would, in their opinion, detract from the value of the remaining 3.5 acres of field in the future.

The Beacon understands that the Parish Council has responded requesting the Trust reconsider their acceptance of the surveyor's report as being the sole reason for not releasing the land to a Housing Association. The Council has earnestly pointed out that the footpath is alongside the edge of the site, that avoiding the foul sewer is for professionals to consider, and that there is an important precedent for planning permission to be granted in that the adjoining surgery itself lies outside the village boundary.

The Council hopes that the Trust will see fit to let others decide upon the adequacy of the site, and draw the Charity Commissioners into approving of its disposal at a price which may be below the commercial value.

We will keep readers informed.

**ELECTRICAL
AND
ALARM
SERVICES**

New Installations, Rewires, Extra Sockets,
Lights, Showers, Security Lighting,
Economy 7 Heating, etc.

Professional intruder alarm
systems fitted from £330.
Remote control car alarms
fitted from £70.

Door Entry and Closed
Circuit Television Systems fitted

For a friendly, prompt and
reliable service contact
Steve Gallagher
on 01453 791209

**ALL WORK FULLY GUARANTEED
WITH NO ADDED VAT**

**PAINSWICK ELECTRICAL
SERVICES**

N.I.C.E.I.C. approved CONTRACTORS

SERVICE
INSTALLATIONS
REPAIRS



The Electrical
Contractors Association

Mr M TURNER
01453 758342 and 01452 812659
Mobile: 07850 784899

CENTRELINE



**SPECIALIST STONEMASONS
& STONE CARVERS**

CONSERVATION SPECIALISTS
QUALITY CRAFTSMANSHIP
EXPERT ADVICE

OFFICE: 01452 813892
WORKSHOP: 01285 821074

FAIRFAX HOUSE • VICARAGE STREET
PAINSWICK • GLOS • GL6 6XS

Beacon Village Quiz

The first major event in the week of Charter celebrations early in July will be the Village Quiz.

We notified the date a while back - Saturday 5th July - and all our preparations have been made. As in previous years, the number of teams which can take part must be limited by the size of the hall in Painswick Centre; so 25 is the very top limit.

The entry charge remains unchanged at £12 per team of four; this covering the cost of the mid-quiz snack brought to tables at the end of the first part of the proceedings.

In response to suggestions made to us, and moving with the times, we changed the format a little last year. Our traditional quiz, with rounds of differing topics put to teams to agree upon their collective answers, was followed for much of the evening. The highest scoring team receives the trophy and a set of four bottles of vino, the second and third teams are not forgotten in the prize-winning stakes.

After supper each team will be invited, not pressed, to nominate their 'champion' to join with others in a form of elimination contest which is based upon a popular television quiz show. We are reflecting on the

elements to use from such as 'Who Wants to Be a Millionaire?', 'Weakest Link', 'Question of Sport', and so on. If our first effort last year is anything to go by, every team will want to nominate a contestant, and the outcome is great fun.

Please note that booking a team into the Village Quiz is now open; a note in the Beacon box or sent to the Treasurer (see the back page), and although there is no need to pay up until we get back to you a cheque for £12 secures your place. Teams can just be a group of four friends, maybe four from a particular street or club; the choice is yours. Doors will be open from 6.45 that evening for a prompt start at 7.15pm.

Will you be there?

Conservative Party Bridge Drive

During the afternoon of Saturday 22 March the Painswick Branch of the Stroud constituency Conservative Association held a Bridge drive in the Church Rooms at Painswick. 36 people took part, playing six rounds each of 4 hands with a mid afternoon break for an excellent tea of sandwiches and cakes.

The winners were Tony Priestley and Barbara Tait with a score of 3920, followed by Daphne Hogarth and Merle Ford in second place with a score of 2540; in third place with a score of 2000 was the veteran pair of Joan Fawcus and Barbara Leigh-Smith. The drive raised a net sum of £226 for Conservative Party funds.

Francis Otway, Corvara, Cotswold Mead.

Conservation

Dr. Colin Studholme, Head of Conservation at the Gloucestershire Wildlife Trust, was the speaker on the evening of 20th March. He emphasised the importance of bird life at the large number of reserves managed by the Trust, especially in the context of a continuing decline in suitable natural habitats. Some reserves are in urban locations, such as the Frome Bank in Stroud where dippers are commonly seen. Others in the open countryside include Ashleworth Ham and Combe Hill Canal in the Severn Vale. At these reserves, recent management schemes had created new flooded areas, with a marked increase in waders including lapwing, curlew and snipe.

Plans are in the making for cooperation with farmers to extend the benefits of conservation well beyond the boundaries of the reserves - an indication of the Trust's ambitions in the years ahead.

The AGM of the Club followed the talk. A successful year was reported, and a new programme of events was outlined.

The next such event is a visit to Frampton-on-Severn on Sunday 27th April. The focus will be on migrating birds, possibly including terns. Everyone is welcome; look out for the posters giving further details.

Bill Boydell

Holy Week

All services are shown on page 22

Annual Spring Coffee Morning - and surgery equipment

This will be held in the Town Hall on Saturday 12th April from 9.45am until 12 noon. Our main charity this year is the "Painswick Surgery Special Equipment Fund", with donations as usual to our Lady & St. Thérèse Church in Painswick and Father Franco in Papua New Guinea.

The Surgery Fund was set up in the mid 1990's: it receives donations from patients and their families and these are pooled into a Building Society Account to be spent as the Trustees think appropriate.

Recent purchases have included: a new Defibrillator that has cost £4,500 (a contribution was received from the British Heart Foundation) and Diagnostic Systems, one for each consulting room. The fund has also been used to purchase extra eye equipment, scopes, etc. to use in their slit lamp room; it has also purchased a Sigmoidoscopy and biopsy equipment to be used for rigid Sigmoidoscopies and endometrial biopsies, etc. This type of procedure is usually performed in secondary care (hospitals) but the fund has enabled them to purchase this equipment and perform these procedures within the Surgery. Additionally medical text books have also been purchased to assist with the training of the GP Registrars and medical students.

This fund benefits the whole community "from the cradle to the grave", so please do come and support us. As usual there will be a Raffle, a Cake-stall with fresh cream chocolate roulades (ideal for Easter), fresh flowers, general stall and as much coffee, tea, chocolate as you wish with home-made biscuits. Cakes and flowers can be ordered in advance. Everybody is most welcome.

Helen Baker tel. 813091

Anne Leoni tel. 812521

PRICE  **DAVIS**

Chartered Accountants & Tax Advisers
The Old Baptist Chapel, New Street
**We provide a local, personal service
for every aspect of your
taxation and accountancy needs**

Howard Davis or Glenn Collingbourne
will be happy to deal with your enquiries

Telephone 812491
Facsimile 812431
Email info@pricedavis.co.uk

THE INSTITUTE OF
CHARTERED
ACCOUNTANTS



IN ENGLAND & WALES

The Zephyr Wind Ensemble of London 12th April

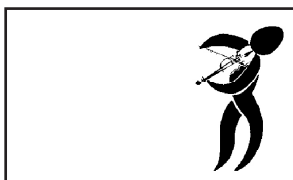
Susan Gritton soprano, Joy Farrall clarinet and Eugene Asti piano

NO 26th April



It is not necessary to become a member of the Society to enjoy these top class concerts - you can purchase a ticket for a single event. If you would like to come to the remaining three concerts of the season, it is still worth buying a membership ticket. Tickets and membership details are obtainable from the Shetland Shop, or Hywel James, tel. 812419, or on the door. Membership is £25, a ticket for one

years and lived with his wife, Joan, at Pipers Edge in Painswick. He was a committed member of the Society of Friends, a keen music lover and member of the Painswick Music Society and he also published two volumes of verse, now sadly out of print. Composer, John Sanders, who has set these poems to music, knew Roland mainly through connections with the Three Choirs Festival. John, who now devotes his time to writing music, was Master of the Choristers at Gloucester Cathedral, and conductor of Gloucester Choral Society and Symphony Orchestra. We are pleased to welcome Susan Gritton, soprano, a Company Principal of the English National Opera, who will be performing this work together with pianist, Eugene Asti and clarinettist Joy Farrall. Other attractions in the programme will be a performance of Schubert's 'The Shepherd on the rock', Schumann piano solos and songs by Liszt, Fauré and Bizet.



Earlier in the month, on 12th April, the young, talented, Zephyr Wind Ensemble of London will perform a programme, which includes works by Rossini, Arnold, Barber. A more unusual piece by Berio involves the quintet reciting poetry! This award winning group perform throughout the UK and recently made their début at London's Purcell Room.

Naomi Dunn

concert is £10 and students and children £1. Concerts are in St. Mary's Church at 3.00pm, and a delicious tea is served in the Church Rooms afterwards when there is usually an opportunity to meet the artists.

On 26th April we have a very special concert which will include the first performance of the recently commissioned work, "When Heart Meets Heart." The words are poems by the late Roland Pepper who was a solicitor in Gloucester for over 40



Heavenly Music

Enjoy an evening of beautiful music in the lovely setting of St Mary's Church, Painswick on Friday, 2nd May at 7.30 pm. Outstanding harpist Catherine White (known locally also as Cathy Cawthorne) brings inspired artistry and musicianship to unveil the beauty and expressive power of the harp. She is joined by two gifted singers, Luise Horrocks and Alison Mary Sutton in a splendid programme combining harp solos and vocal duets with harp accompaniment.

The varied programme of French, Spanish, English, and Celtic music will include On Wings of Song by Mendelssohn, Offenbach's Barcarole (Belle Nuit), and vocal duets by Monteverdi, Purcell, Saint-Saens, Gounod, as well as glorious Harp Solos by

Debussy and Respighi among others.

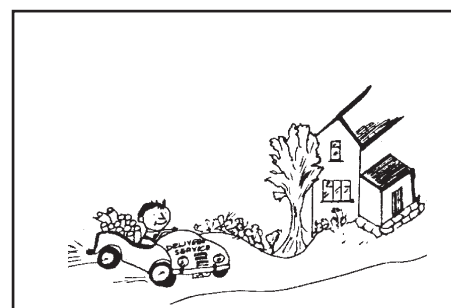
Luise and Alison have both performed extensively singing with such eminent groups as The Royal Liverpool Philharmonic and Opera de Lyon as well as oratorio and recitals throughout the UK. Catherine has enjoyed a varied career as a harpist on both sides of the Atlantic. She has presented hundreds of solo and chamber recitals in her native USA, including Carnegie Recital Hall, and currently is busy as an orchestral harpist with the Ulster Orchestra in Belfast and freelancing with major London orchestras such as the BBC Symphony Orchestra and for the Royal Ballet. She has been privileged to play for British and foreign Royalty on numerous occasions

Tickets are £7.50, available from Celia

Hargrave (814 306). The artists are kindly donating their services, this so that all proceeds may help support the Sheepscombe Village Hall Appeal.

So do please come along for a delightful evening of music you are sure to enjoy!

Celia Hargrave



Birds in our gardens

| | |
|-----------------|----|
| Rooks | 50 |
| Woodpigeon | 22 |
| Chaffinch | 12 |
| House Sparrow | 12 |
| Blue Tit | 9 |
| Greenfinch | 8 |
| Great Tit | 8 |
| Jackdaw | 8 |
| Long-tailed Tit | 7 |
| Dunnock | 6 |
| Wren | 6 |
| Blackbird | 6 |
| Robin | 6 |
| Bullfinch | 6 |
| Collared Dove | 5 |
| Coal Tit | 5 |
| Goldfinch | 5 |
| Stock Dove | 5 |
| Magpie | 4 |
| Starling | 4 |
| Siskins | 4 |

Between 29th December last and 1st March the Gloucestershire Ornithological



Co-ordinating Committee organised a Garden Bird Survey. For each week of the survey those taking part were requested to record the *maximum* number of each species seen *at any one time* in their garden.

The Beacon has had sight of seven of the survey 'returns' which are on their way to the Committee, and is pleased to extract some of the information as it gives some indication of the diversity of bird life in this area at the start of this year.

All the properties had feeding stations set in a rural area, most of the gardens were described as large, only one had running water, and most regarded the land around their garden as agricultural.

The table indicates the maximum sighting among the seven participants from the Bird Club in any one week.

| | |
|--------------------------|---|
| Carrion Crow | 3 |
| Blackcap | 2 |
| Song Thrush | 2 |
| Jay | 2 |
| Pheasant | 2 |
| Nuthatch | 2 |
| Field Fare | 2 |
| Marsh Tit | 2 |
| Pied Wagtail | 2 |
| Sparrow Hawk | 1 |
| Great Spotted Woodpecker | 1 |
| Green Woodpecker | 1 |
| Tawny Owl | 1 |
| Feral Pigeon | 0 |

A wildlife note

Interest has been aroused by the report last month about the rescue centre (Wildlife Rescued p.5) to which the public can take creatures needing attention. They will come out if the circumstances warrant.

Readers may, in anticipation of the unexpected, care to note the telephone number is 01452.700038 and they are the Gloucestershire Wildlife Rescue Centre, 2 Home Farm Cottages, Hartpury, Glos GL19 3DE

Club and Society Reports

Readers will, of course, have noted that this is a 24-page issue. In part this arises from our inclusion across the centre pages of a story about the Beacon's early days and the technology now brought to bear. It is our anniversary, after all!

We receive mixed signals from a few readers who have differing opinions about the size of an issue. Some prefer our limiting ourselves to 20 pages, others seem to appreciate 'a good read'. We can't win, but we do try.

One aspect is of a little concern, and that is the length of reports we receive from clubs and societies. They seem to be getting longer, and we are close to the point at which we may have to request limiting the number of words. Could correspondents voluntarily assist us, please, by creating as concise a text as possible? We have not omitted any articles for many months and, with your help, hope to keep it that way. Incidentally, we are finding that readers contemplating whether to attend a function welcome more news about forthcoming events, rather than comprehensive reports about what they missed.

How old do crows get?

That question, from a local resident who had been afflicted by the antics of his 'resident' crow, was passed on to the Bird Club. If one of them didn't know, who would?

Eureka! Malcolm Watts told us that the oldest ringed carrion crow was recorded by a Swedish ornithologist at 19 years. Interestingly, we also learned that the mortality rate for crows in the UK and Finland is 61% in their first year, and it is pretty grim in subsequent years too! Next question?

The Senior Circle in April

Notwithstanding last month's Beacon, April does not come twice a year (even in Painswick), it was just the Circle getting ahead of itself and putting one past the editor. (*Don't believe it - we left his 'error' in.*)

Anyway, this month's meetings are going to be just as fascinating as what we have just enjoyed. Hugh Ross's excursions into alphabets of the world leading from his creation of computerised English left us staggered at what he achieved and provided for the whole world. And I wonder why this British achievement is so little recognised.

This month's programme brings back Peter Clarkson and Pip Millard by popular demand of Circle members to hear more following their previous talks. Peter, the well known Art Historian from Bristol University, on Friday 11th April, is going into the subject of

Posters as Art. He tells me he will be looking at posters from Toulouse Lautrec (and few would dispute the artistic credentials of those) to World War II. Kitchener's finger was certainly effective, but was it art? No doubt we will discover. I gather Peter will disclose some interesting facets of Nazi posters which obviously have as much claim to artistic credentials as our own, whatever their message.

Pip Millard returns on Friday 25th - new baby permitting - to continue her tales of travel and the unexpected, drawn from her experiences down under, which so excited the interests of the Circle that they asked for more. Having drifted away from farming there (fed up with mucking out she tells me) she is now a veterinary nurse which, no doubt, provides her with a further fund of interesting animal tales.

Maurice Maggs

Advertising opportunity

The Beacon Committee needs some help, please. Could it be you, or someone you know? It is an important but very satisfying task.

Most of the income necessary for the operation of the Beacon depends upon that which advertisers pay for the spaces at the bottom of most pages in every issue. Such is the importance these service operators place upon our distributing to every household in Painswick, and well beyond the village boundary too, that we have more wanting to advertise than we can carry.

As we reported recently, Liz Fisher - who has been our sole liaison with advertisers for several years - is keen to attend to other interests and we hope to recruit someone who can 'handle' the administration involved. This does not include raising accounts or financial transactions; this aspect is handled by the Treasurer. What is involved is sorting out requests for space, obtaining advertiser's details and passing on to the Editorial Team the variations for each up-coming issue.

As with all Beacon committee members, the task is voluntary. Telephone and miscellaneous costs are reimbursed, and access to a computer and also the Internet is an advantage. All training/briefing can be passed on by Liz and, for 2003-04 the organisation is entirely in place.

We await a telephone call to Liz or other

Quality Parish Councils

Parish Councils continue to be the subject of scrutiny by central government with the intention of improving the councils' status. The latest initiative by the Office of the Deputy Prime Minister is to encourage parish councils to seek "Quality" status. The main benefit arising from attaining this status is that the county and district council together with other service providers would have to consult with Painswick Parish Council on how services were best delivered to the parish. This would lead to the council having the opportunity to carry out a range of services currently undertaken by other agencies. The main advantage of the proposed system would be that the council would be able to set its own work priorities. The transfer of responsibilities would be formalised by the parish council negotiating a Charter with the principal authorities viz., the county and district councils.

If Painswick Parish Council decides to pursue achieving "Quality" status, it will first have to pass seven tests. The first of the tests requires that, eventually, all the council's seats must have been filled by members who stood for election. The second test calls for the clerk to the council to hold a Certificate in Local Government Administration. The third requires the council to hold at least six meetings a year with minutes available for inspection and the public afforded the opportunity to participate at the meetings. The fourth test requires the council to publish information regularly, perhaps in the form of a quarterly newsletter. Fifth requires the publication of an Annual Report and sixth, the publication of Annual Accounts. The seventh test is the adoption of a local Code of Conduct which requires councillors to give full details of land in their ownership and the particulars of any organisations of which they are in membership.

The scheme was formally launched last month in London by the Rt. Hon. Alun Michael MP, Minister of State for Rural Affairs. It is expected to be introduced in June of this year when councils will have the opportunity of seeking the enhanced status.

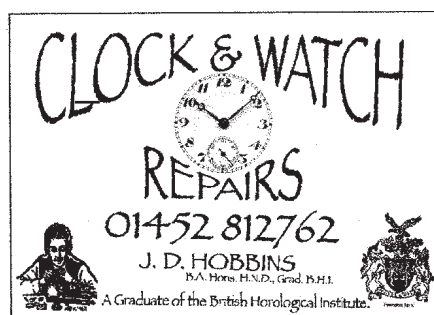


TREE SURGERY
Environmentally Sensitive

Sapling to Veteran Tree Care
Fruit Tree Pruning & Conservation
All Tree Work Undertaken

Skilled Professional Service: Fully Insured:
Ecological Standards: F.C.A. member

Landcare Services
6 Pullens Rd, Painswick
Call John Rhodes & Clare Overhill
812709



CLOCK & WATCH REPAIRS

01452 812762

J. D. HOBBS
B.A. Hon. H.N.D., Grad. B.H.I.

A Graduate of the British Horological Institute.

Travel Tokens

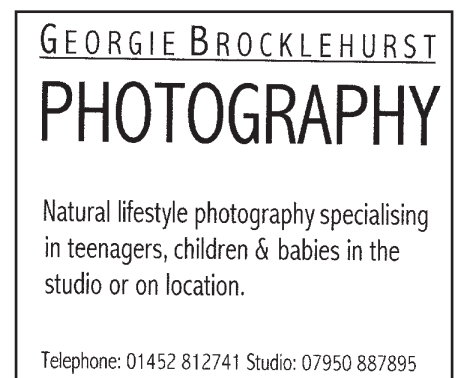
These can be used from 1st April and are available from the Post Office until 21st May. After that date the number of tokens is reduced pro rata for the year and they may only be obtained direct from the District Council.

Much more than a Snap

Shot

The newly commissioned work of a new advertiser, Georgie Brocklehurst (below), can be seen at Painswick Fabrics or by prior appointment at her Studio.

Telephone: 812741 or 07950 887895.



GEORGIE BROCKLEHURST PHOTOGRAPHY

Natural lifestyle photography specialising in teenagers, children & babies in the studio or on location.

Telephone: 01452 812741 Studio: 07950 887895

Caroline Crawford Interiors

For those whose thoughts on interior design have been (highly) coloured by the fluff and flourish of a Changing Rooms MDF make-over – and I can think of at least a couple of Painswickians who this might apply to – Caroline Crawford comes as a refreshing change. Caroline, whose design studio - Caroline Crawford Interiors - opened on New Street in March, manages a rare blend of creative flair, business acumen and a practical, no-nonsense attention to detail. Her skill is to visualise how a room could look and then to manage the refurbishment process through to completion.

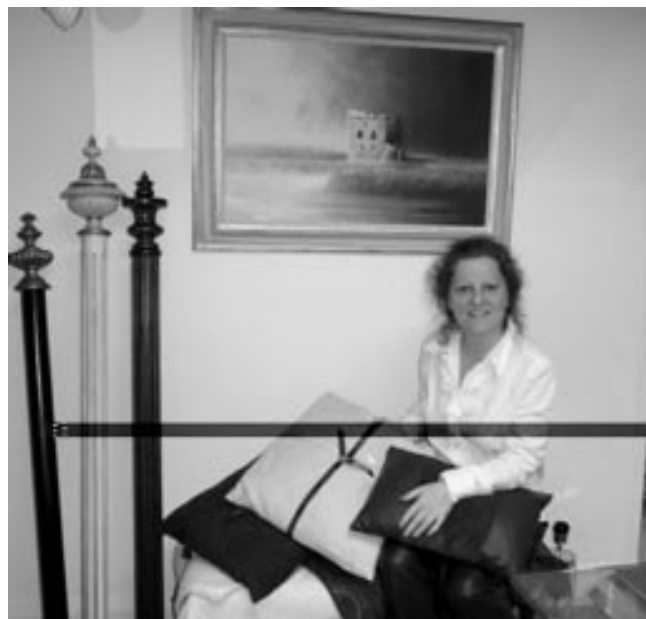
Not that she condemns TV make-over programmes out of hand. She was herself 'guest designer' on the regional HTV series, 'Our House', which traced a barn conversion from inception to completion. Such programmes, she believes, are very good at broadening our vision of what is possible and generating an enthusiasm for design. 'The problem,' she says 'is that, because TV places such a premium on flamboyance and entertainment, people get conned into thinking that good design is cheap, quick and easy.'

Although new to Painswick – she set up home in Tibbiwell with her husband Shaun, son Mitchell (13) and daughter Hattie (11) less than a year ago – she has been a professional interior designer for some 10 years. For five years, she worked out of Cirencester and, immediately before moving to Painswick, shared a studio in Malvern. Originally, her design work was more of a part-time hobby: she worked full time as a business manager in financial services, which is doubtless where her practical business skills come from.

Caroline views Painswick as a great location for her type of business. Apart from a few London based clients, most of her clients come from within a thirty-mile radius of Painswick and most of the work involves refurbishing domestic properties.

'As for anywhere, you've got to work at it: service is everything,' she says. 'Most of all, you have to listen to your customers.'

With this in mind, why not try to catch her at the studio and let her know what you think? If she's not there, she'll be out on site somewhere, so contact her via her website: www.carolinecrawfordinteriors.co.uk



JRB

House history workshop - how your house can tell you its own history

The Stroudend Tithing Educational Trust is holding a workshop at Pitchcombe Village Hall on 17th May to introduce homeowners to methods of dating buildings by observing techniques of construction and architectural details.

Many of the houses in and around Painswick and Slad are older than they might first appear. The cloth making industry in the Stroud Valleys was established during the medieval period. The wealth from this early industrial activity has left us the impressive legacy of fine buildings, which we are privileged to enjoy today.

Improvements were made to impress the neighbours as far back as the 17th century. New wealth, acquired by the owners of the fulling mills, was directed into land and property. Success could be measured by improving and extending houses, then as now. New fashions in exterior design incorporated classical features, sometimes, complete new facades were superimposed onto traditional houses and cottages or else interior features were added to cover the cruder vernacular. These features can be unravelled by observation to reveal the growth and development of a property.

The workshop will be presented by Dr. Philip Dixon of the University of Nottingham Department of Archaeology, occasional advisor on castles for 'Time Team', in association with Dr. Beryl Lott, an expert on medieval buildings and Dr. Graham Lott, a specialist in historic construction materials.

The workshop will be at Pitchcombe Village Hall on Saturday 17th May 2003 from 10.00am-4.00pm. Cost £10.00 (to include coffee but please bring packed lunch).

Please ring for details Carolyn Luke 814139 or Richard Savage 813958

Cobalt Unit

Sincere thanks for the support everyone gave at the Christmas Bingo, a Christmas cake, mince pies - an event where we raised £873.20 for the Cobalt Unit.

A grand effort.

*Jane Gardiner and Suzy Archer
and many helpers*

Equestrian Services

Clipping/Schooling/Breaking/Teaching
Also Competing available

Call Sam

01452 722533 or 07759 392154

Memories of Wartime Painswick

There are still a few people in Painswick who lived here during the Second World War. Two of them, Pauline Berry and Helen Briggs told what it was like and the way the villagers played their part in the war effort.

Painswick became a reception district for evacuees from Clacton-on-Sea. The ARP (later known as Civil Defence) teams, the LDV (later known as the Home Guard) took up the time and energy of many. The Home Guard manned a hut on Painswick Beacon. The Civil Defence base was at Church House in Friday Street. The appearance of the village was drastically affected by the removal of all iron railings and gates, in particular those around the churchyard, in order to be melted down to make war weapons - or so it was fondly believed. In time, many felt it was an improvement. Lawns and flowerbeds were dug up in response to the exhortation to "Dig for Victory", and replaced by vegetable plots. And so on.

There was tragedy however, when, one night in 1941, three German bombs fell on the village, killing two people, both visitors, and injuring others. American troops camped outside the village in the build-up to D-day, setting the young female hearts fluttering. Paratroopers spent a night bivouacked by the roadside on their way to Arnhem, many of them never to return.

From her vantage point living above Central Stores in New Street, Helen recalled the days of rationing - from both sides of

the counter! The phone box became a magnet for local girls when special friends among the troops moved on. We had forgotten so many little things - the National Anthems of the Allies played before the 9 o'clock news on Sunday evenings, War Weapons Weeks, knitting comforts for the troops (Balaclava helmets!), and so on.

John Bailey rounded off the evening by reading from the Painswick War Book, compiled by the local Invasion Committee on the order of the Government, a sort of inventory of the equipment and facilities they held if the worst came to the worst. Few of these books survive, and the one from Painswick is now in the Imperial War Museum. For example, we learnt that if mass graves were needed in Painswick, it was proposed to use the churchyards. In the event of a breakdown in communications, a megaphone was available, though unfortunately it was kept by a man who lived in Stroud. Eleven horses and sixteen wheelbarrows could be pressed into use, and a number of bedpans and urinal bottles were also reserved for any emergency! By the end of the evening, Dad's Army seemed totally credible!

Peter Minall

Painswick Playgroup

Over the last few weeks or so the children at Painswick Playgroup have enjoyed various activities and events; please read on to find out what they have been doing.

At the beginning of February the children celebrated the Chinese New Year. They enjoyed eating prawn crackers and noodles with their chopsticks at snack time.

Pat, the Road Safety Officer, visited the group and gave a talk about crossing the road safely. She brought along her teddy in its own safety seat to show the children. The children put their road safety skills to practise when they all went for a walk into the village with mums and staff. They visited St. Mary's church and Our Lady & St. Therese church. They were rewarded for their good behaviour with a visit to the shop to buy a lollipop. On the walk they identified lots of numbers around the village.

On Friday 14th February Mr Philip Oakley, of the Gyde Trust, officially opened the new adventure climbing frame. The Stroud News & Journal and The Citizen were there to record and photograph the event. The children helped staff decorate the climbing frame with red balloons and red ribbons and hearts. Staff and children continued the Valentine theme by wearing red clothes for the special event. A raffle took place to raise money for the cost of the climbing frame. The children also made Valentine cards to bring home.

The children have been taking part in

musical sessions organised by Sue Barker from PATA (Parent and Toddler Association), which they have all enjoyed. A sponsored 'welly walk' around the school field will be taking place shortly - lets hope the weather gets warmer!

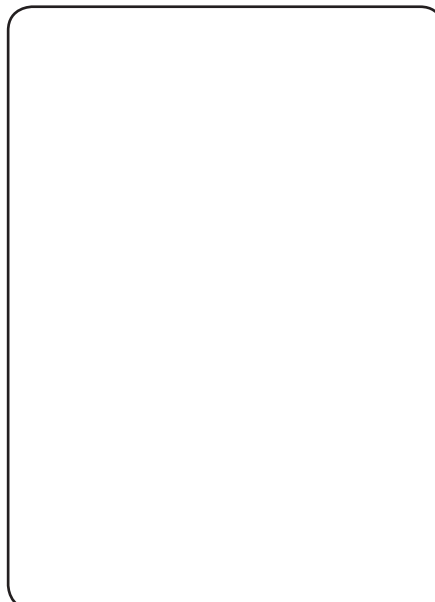
A coffee morning took place on Wednesday 19th March, at the Town Hall in the village. Cakes and handmade greeting cards were a few of the items on sale. All proceeds went towards the cost of the climbing frame. A BIG THANK YOU goes to Andy Lock for organising this event on behalf of the Playgroup and for making it a great success and thank you to everyone who supported us. The Coffee Morning raised a much needed £270.00 towards Playgroup funds. Big thanks also go to everyone who helped with making the tea and coffee and manning the stalls. Thank you to everyone who supported the event and joined us for coffee and biscuits, especially the ladies from Painswick Puffins. The children raised £19.00 on Red Nose Day for Comic Relief. The children wore fancy dress on the day - Superman to Woody the Cowboy, Princesses to Jessie the Cowgirl, Harry Potter to Merlin the Magician to name but a few.

Sandra Chandler - Playgroup Assistant



Garden Party Tents From
spaceintense

FOR HIRE - Telephone 01452 813658
e-mail: charles@spaceintense.co.uk
Grays · Far End · Sheepscombe



Caroline Crawford
Interiors

Interior Design
Soft Furnishings & Fabrics
Upholstery Wallpapers & Flooring
Paint & Paint Techniques
Lighting & Accessories

Opening times: By Appointment
Tel/Fax: 01452 813631
www.carolinecrawfordinteriors.co.uk
email: cci@carolinecrawfordinteriors.co.uk

Shock Horror!

Painswick Players 80 year old mystery deepens! Naked violence at rehearsals! Chairman resigns!

Readers! I scarcely know where to start this month! Such drama! Such shocks! Such mystery! Such a profligate waste of exclamation marks! But start I must...

First, let me warn all those of a nervous disposition to read this month's column with eyes shut and a glass of medicinal brandy at hand. You may recall that a couple of months ago, I reported the engagement of Jan Campbell, our Chairman, to the lovely Keith Young. Scarcely had this news sunk in when she further announced that she was resigning as chairman because she was leaving Painswick! Not content with getting married, they also apparently planned to live together! ...in Oxfordshire! I know it sounds patently absurd and pure 'soap' but Jan really has decided to give up Painswick Players for... love! Seriously, she will be greatly missed for her vision, her commitment, her enthusiasm and for some memorably dramatic parties (aka committee meetings). Jan will, indeed, be a hard act to follow...

Already the lack of leadership is having an impact. Violent anarchy is rife! For example, our next production, the daringly risqué *Don't Dress for Dinner* (8th to 10th May), contains its fair share of knock-about comedy. However, rarely can an actor have been so comprehensively knocked about as Mike Jackson in a recent rehearsal. Mike, who plays Bernard the unfaithful husband, was rehearsing a confrontation with his mistress, Suzanne, who thinks he is two-timing her for the cook, Suzette whilst she (Suzanne) is actually entangled with his best friend, Robert, who is having an affair with Bernard's wife, Jacqueline ... and also (probably) Suzette. (Don't worry: it's all very simple, really!)

Anyway, the scene called for Suzanne to give Bernard a perfectly timed and seemingly realistic stage slap. Now, I am only too painfully aware that when the Most Organised One (for



'twas she) delivers a stage slap, you can forget the 'seemingly' and 'stage' bits.

It was at about the sixth attempt – director Lesley Wolowiec has a decidedly sadistic streak – that the MOO got the timing exactly right. With a resounding crack, Mike toppled over the sofa, executing an immaculate backward somersault and landed with a thump on the floor. He only came round when the set designer, mistaking him for part of the set, started painting him a fetching shade of primrose.

And now for two mysteries. The first concerns our plans to celebrate the 80th anniversary of the founding of Painswick Players by the formidable Miss Lucy Hyett. The 'Living Legends' evening on Friday 11th July is building up a good head of steam.

An impressive cast of past and present PPs is coming together to present highlights from such past PP triumphs as *Salad Days* (including Julian Slade), *The Importance of being Earnest*, *Guys and Dolls*, *On Golden Pond* and last year's foot-tapping *Stepping Out*, often featuring the original actors and actresses. So, where's the mystery? Well, to accompany the celebration, we are assembling an exhibition (and website - www.painswickplayers.org.uk) of pictures, posters, programmes, cuttings and other dramatic ephemera. The one glaring omission is a picture of Miss Lucy Hyett herself. Curiously, despite her prominence in the local community, a thorough search of the archives has produced nothing: it's as if she were photographically invisible.

The second mystery surrounds the following photo, which emerged as a result of the trawl through the archives in search of Miss Lucy.

We think it is a production from the 1940s or early 50s but who are the actors, what's the play... and what are they doing? Anyone any ideas?

Jack Burgess,

Painswick Players www.painswickplayers.org.uk



Readers are reminded that the Dog Warden telephone number is
01453 754497



**JOHN BARNES
CARPET & UPHOLSTERY
CLEANING SPECIALIST**

Competitive Prices
Three Piece Suites
Spot & Stain Removal
Free Quotations
Fully Insured

01452.830562/332185

LETTERS

Tough at Uni

Commiserations to Jack Burgess whose harrowing account of his demotion to coffee maker reminded me of a similar fate I had suffered recently - though not of course at the exalted level of Assistant Director!

A seemingly eternal student at what is now the University of Gloucestershire - with lecturers half my age and most fellow students young enough to be my grandchildren - I tried to ingratiate myself with a new teacher by asking a few questions. (This is why they tolerate us oldies - we are less shy!). I was dumbfounded when at the end of the lecture he ordered me: "you can make the coffee". My first instinct was to brew it as unpalatable as possible so as to avoid any possible repeat performance but I had not anticipated the simultaneous stampede into the coffee room where I was cornered and closely watched. It's a hard life.....

Ralph Kenber

Police Percentage

The Council Tax demand this year shows an increase of 51.7% in that portion of the tax allocated to Police funding. Whilst this figure is in simplistic terms correct, it would be wrong to assume, as many have, that Police expenditure this year will be anything like 51.7% more than it was in 2002-03. The Police budget increase is in fact 15.8%, largely in response to public demand that significantly more officers are employed overall, particularly at the sharp end of crime prevention and detection.

It is regrettable that in the otherwise informative booklet "Working For You" no explanation of this misleading statistic appears and that consequently Council Tax payers have been left with a totally false impression of Police budget requirements.

The purpose of this letter is, hopefully, to encourage Painswick Parish Council to seek, from the District and County Councils, assurance that, in the future, they will also ensure that residents are not misled should similar circumstances occur.

John Weir

Bus Service No.3

I note from the March edition of the *Painswick Beacon* that Bus Service 3, from and to Gloucester is to be withdrawn. This is yet another blow to Painswick and is to be deplored. I have travelled on this service. By the time it reaches Gloucester there is standing room only - indeed, the bus is often so full that it can't accommodate the demand. So, the service as a whole is undoubtedly lucrative.

Commercially, I admit, adding the link to Painswick will eat into the earnings of those whose sole motivation in running buses is to maximise profits. But public transport should go beyond the naked profit motive. It's about accessibility, concern for the environment and, in many cases, combating rural isolation.

Little concern has been shown towards the current users of the service from Painswick. They comprise schoolchildren, mostly. What are they to do? Well, it seems they are expected to travel to Brockworth, change, hang around in all weathers and wait for another service to take them to Gloucester. Then repeat the fiasco on the journey home.

Only this week a communication from Gloucestershire County Council dropped through my letter box. Among other things, it restated its commitment to getting people out of their cars and on to buses. Cancelling Painswick's one and only remaining commuter service to Gloucester is an odd way of way of demonstrating that commitment. It should be *encouraging* people, particularly commuters, to use the service rather than withdrawing their relatively meagre subsidy.

Could the Parish Council not address this problem?

Charles Arthurs

Music at Edge Church

As the days lengthen a little our thoughts can turn to the warmer evenings of early summer. Memories of those three Edge Festivals always come to mind and the musical experiences we had. Do you remember the saunter across the road to the Rectory for a glass of wine and then returning for some more lovely music? Well here are two dates for your diary this year:

Saturday 10th May at 7.30pm when we welcome 'Songbards' to Edge Church. 'Songbards' is a quartet of singers who present an evening of light entertainment with a programme of songs and words based on the theme of love. For all tastes, there will be music from the shows and from opera and folk songs too. Tickets will cost £5 available from Andrea Cahill (813396), Joyce Ryan (812311) and Elizabeth Ward (812188) As usual, children of school age are admitted free. There will be light refreshments in the interval and all proceeds will be in aid of Edge Village Hall and Edge Church.

Saturday 14th June at 7.30 pm when we welcome once again 'Tibulate' - one of Britain's foremost brass ensembles who came to Edge Festival in 1997. They delighted us all then and plan to do so again. Tickets will cost £10 and are available from Elizabeth Ward (812188) and Joyce Ryan (812311). Children of school age are admitted free. During the extended interval we will be serving wine and nibbles, delicious desserts and coffee. All proceeds will be in aid of Edge Village Hall and Edge Church.

We do hope you will come and join us for what promises to be two delightful evenings.

Maypole Club Coffee Morning

Coffee Morning and Bring & Buy for the MAYPOLE CLUB for the elderly, Stroud on Wednesday 30th April from 10.30 - 1.00pm at Yew Tree House, Vicarage Street.

The Maypole Club for the Elderly (Mace) was formerly the Housebound Club and is held in the Maypole Hall, Pagan Hill. It was started in the 1960's by Mrs. Joan Miller of Painswick and friends and has been running ever since.

It meets monthly and provides an opportunity for elderly and housebound people from Stroud and the surrounding villages to share an enjoyable day with good food, fellowship, entertainment and usually much laughter. We are always ready to welcome new members and helpers! Do come and support us!

Elizabeth Burge

Michael Davis

Building and Maintenance Limited
Painswick 01452 812598

Mobile 07889 092279

e-mail: Mike@painswick4.fsnet.co.uk

ALL types of building work carried out.
Natural Stonework and Dry stone
Walling a Speciality

Lived and worked locally for
over 30 years

Member of the Guild of Master Craftsmen

THE PAINSWICK PHARMACY

NEW STREET. Tel. PAINSWICK (01452) 812263



OPENING TIMES

MONDAY TO FRIDAY

9.00 - 1.00 AND 2.00 - 6.00

SATURDAY

9.00 - 1.00

The First Beacon

The Painswick Beacon

Vol. 1 No. 1

OYEZ! OYEZ!

The Painswick Beacon was the first newspaper to be published in the village since the 18th century. It was first published in 1977 and has since become a vital part of the community.

The Painswick Beacon was the first newspaper to be published in the village since the 18th century. It was first published in 1977 and has since become a vital part of the community.



Country Players' springtime production

The Painswick Country Players have announced their springtime production. The play is set to be performed in the village hall.

Youth Club

The Painswick Youth Club is currently looking for members. They offer a variety of activities for young people in the village.

Institute disco change

The Painswick Institute has announced a change in its disco nights. The new format will be more focused on local talent.

Burn dance

The Painswick Burn Dance is taking place this weekend. It is a traditional event where people burn their old clothes.

Hello...

A short notice or announcement regarding a local event or business.

...and goodbye

A notice of departure or the end of a project or service.

The Painswick Beacon

WINTER RETURNS - AND PAINSWICK COUNTS THE COST

The Painswick Beacon reports on the impact of winter weather on the village. It discusses the challenges of cold temperatures and snow.

Council against New Development

The Painswick Council is opposing new development in the village. They believe it will harm the local environment and community.

Day Out

The Painswick Council is organizing a day out for residents. It includes various activities and a picnic.

ARC

A notice regarding the ARC (Action Research Centre) in the village.

The Painswick Beacon

The Princess at Paradise House

The Painswick Beacon reviews the production 'The Princess at Paradise House'. It praises the cast and the set design.

Taxi-Bus

A notice regarding a taxi-bus service in the village.

PaDS - Exciting Announcement!

The Painswick Beacon announces the PaDS (Painswick Action Day Service) project. It is a new initiative to support the elderly.

Sir Anthony re-elected

The Painswick Beacon reports that Sir Anthony has been re-elected. He will continue to lead the village council.

LEAR & LEAR
Sole House Painswick
Tel: 01296 411111
Fax: 01296 411111

The newspaper came about as a result of a suggestion from Helen Horton, who at the time, was living in Friday Street. Helen had noted that a number of villages similar to Painswick had produced their own local newspaper. She took soundings to see if there was support for the idea and, finding that there was, called a small group together to discuss how the newspaper might be progressed. After several meetings a committee was formed with the following member/appointments:-

- Editors: Helen Horton and Terry Parker
- Hon Treasurer: John Polhill
- Advertising: David Gunton
- Village Diary: Edwina Buttrey
- Clubs & Organisations: Graeme Horton
- Sports: Lynn Steer
- Bits and Pieces: Rachel Taylor
- Production facilities: Peter Wiggins
- Typing: Sylvia Steer
- Paste up: Lois Wiggins
- Distribution: Chris Jones

One of the first decisions was what name to give the newspaper. The Painswick Beacon was the unanimous choice and the only problem over the years has been the occasional confusion with the hill that stands above the village. The electronic system called Desk Top Publishing was light years away in 1977 and the Beacon would not have been possible without the professional help of Lois and Peter Wiggins who gave their time voluntarily. Lois worked long hours to produce the artwork which was achieved by sticking the printed columns onto paper which had the column margins printed in blue because that colour was invisible to the printer's camera. Sylvia did not have the benefit of an electronic typewriter and so a manual had to be used.

Each section heading was carefully created using Letraset adhesive letters. One of the many innovations over the years was the purchase of a Kroy machine which enabled the words to be produced on a ribbon. A major influence on the newspaper's presentation was the purchase of a golf ball electronic typewriter. Distribution was to prove a problem and the committee was very grateful to the milkmen and newspaper deliverers who took the Beacon to a number of local addresses. As the newspaper became established, a team of distributors was set up and copies of the Beacon were taken to each of the 900 homes in the village. The membership of the team has, not surprisingly, changed over the years but the efficiency of the team in getting the copies out in a very timely manner has been unchanged. The effectiveness of the distribution system has been a major factor in the Beacon's continuing existence. The major hurdle the committee faced at the outset was how to



HAMPTONS
AGENTS AND VALUERS
100 CHICHESTER ROAD, PAINSWICK
TEL: 01296 411111

The Painswick Beacon

VICAR CALLS FOR MORE 'CIVIC PRIDE'

An effort to attract national funds through the village of Painswick has been made by the vicar, Rev. Canon John B. ...

New-look stocks



Gardens open for Red Cross

The Ladies' Aid Society of Painswick ...

Falcon set to re-open

The Falcon pub in Painswick ...

HAMPTONS

RETAIL AGENTS FOR HAMPTONS INTERNATIONAL
100-102 CHICHESTER ROAD, PAINSWICK, GLOS. GL54 0AA
TELEPHONE: 01453 851111 FAX: 01453 851122

fund the newspaper, it having been agreed that the Beacon should be free to every household in the village. The committee need not have worried as no less than 45 local businesses sponsored the early editions and a number of donations were received from residents. Another problem was obtaining reports and articles from the various organisations. All this seems a far cry from today with some 650 subscribers and a number of businesses on the waiting list for advertising space. The size of the Beacon has increased from 4 pages in 1978 to editions in excess of 20 pages and, even at this size, it is not always possible to include every item. The income from subscribers' contributions and advertising is therefore essential and the Beacon committee is especially grateful for the support

The Painswick Beacon

COUNTY'S DECISION FAILS TO DETER STROUD COUNCILLORS

The Gloucestershire County Council's decision to ...



The Painswick Beacon

'NO' TO RECREATION FIELD CAR PARK

Painswick Parish Council has ...



Workers and watchers ...

The Painswick Beacon

MILLENNIUM MOMENTUM

Painswick has celebrated the ...



Draft Local Plan published next week ...

HAMPTONS INTERNATIONAL
100-102 CHICHESTER ROAD, PAINSWICK, GLOS. GL54 0AA
TELEPHONE: 01453 851111 FAX: 01453 851122

The Painswick Beacon

'Lost we forget'

What is the point of remembering ...



A46 TRAFFIC - MORE FACTS AND FIGURES

As a result of the ...

TAKE YOUR PICK

A local ...

it receives.

The Beacon has seen many changes in these 25 years and the present committee wishes to acknowledge the considerable contribution made by those local residents who have assisted in the newspaper's production during that time. There can be no doubt about the commitment of Alan Bamber who, first with responsibility for the Beacon's production, and then as editor/production chief took the newspaper through a period of major change. Most significantly, the Beacon is now produced electronically with copy being sent via email between the committee members. Desk Top Publishing means that the typed material can be fed directly into the Beacon's draft newspaper pages that are stored within a personal computer. The system enables the text to be put into column widths automatically and for it to be moved to accommodate further text as necessary. Digital photography also enables photographs to be fed into the pages directly.

There have been other changes outside of the Beacon's production responsibilities. In the 70s the Beacon committee members were to be heard singing carols for charity around the villages streets. This no longer happens but in recent times the Beacon's annual quiz has proved to be a popular event. Another innovation has been the production of an annual directory of businesses, services, clubs, societies and other organisations. So here we are at our Silver Jubilee. The majority of the original committee members are still living in the area. They will, like us, probably be surprised that 25 years on and 301 editions later, the Beacon is still with us. With your support we hope that the newspaper will continue for many years to come.

Editorial Committee

The Painswick Beacon

PAINSWICK WINS BLEDISLOE CUP

Painswick has ...

BRITAIN AND EUROPE - WHAT NEXT?

A ...

Urgent appeal for blood donors

The ...

HAMPTONS INTERNATIONAL
100-102 CHICHESTER ROAD, PAINSWICK, GLOS. GL54 0AA
TELEPHONE: 01453 851111 FAX: 01453 851122

Broadband - no wires update

Knowing that there is some interest in the Loop Scorpio potential for Painswick we approached Peter Cartwright to tell us how he has been getting on. Readers may recall that he was, then, anticipating connecting Ledbury by early March. Peter told us that "Since the open meeting we have been receiving expressions of interest from people both in and around the village; as we found with Ledbury, those close to our proposed area of operation are also very interested in broadband!" Like Peter, we have been watching the BT site for registrations with them and are very impressed that they have now reached around 135.

"The above leads me to the conclusion that yes Loop Scorpio definitely should address Painswick and include it in our plans over the next few months", said Peter. "The only thing that is holding me back at the moment is that we are very heavily involved in getting Ledbury operational which is now overdue thanks to BT not meeting datelines previously agreed." It seems that BT should have had the Internet 'pipe' installed by the end of February, but told Loop Scorpio at the last moment that they had 'found' one of their ducts to be blocked. Peter went on to tell us that

"March seems to have been one excuse after another, and I am none too pleased with BT at the moment! We are now slowly moving up an escalation procedure, but with BT being what they are this is both frustrating and time consuming."

"As soon as we have got the situation resolved over Ledbury, I shall turn my attention to getting the circuit to link Painswick and Gloucester sorted. The first step in this process will be to identify and agree somewhere in the village (preferably close to the BT exchange) where we can "terminate" the circuit. Clearly, this point will have the best-case Internet connection since it will not involve any wireless hops! One option seems to be the Town Hall and I will be considering this from a technical stand point, and enquiring with the Parish Council as to their views in the matter."

Peter Cartwright will be pleased to receive enquiries and expressions of interest, preferably through his Email address peter@loopscorpio.net

A day or two before we finalised copy we noted that BT have announced a list of 102 additional exchanges that are to receive trigger levels for broadband! The trigger levels themselves will not be announced until the 31st March, though the exchange names have been. Painswick is not one of them!

Easter at Painswick W.I. Market

A reminder to everyone, both regular and occasional customers, and newcomers or visitors to Painswick, that the Easter Market will be held on Maundy Thursday 17th April 2003 at 10 am, in the Town Hall. Coffee 75p and "Tasters" will be served.

Come and visit to see what goodies we have to offer Vegetables, plants and flowers, craft and cards, homemade preserves and honey, home-baked cakes, pastries and puddings are available. Also, we now have free-range organically produced hens eggs in addition to our regular supply of delicious large eggs.

It is always very helpful and often advisable to order in advance to avoid disappointment - Telephone Doreen Boon 813850 two or three days before the market.

New producers, especially savoury cooks and vegetable growers, are always welcome, also helpers on Friday mornings are continually needed, so please think about sparing a little time to help keep the market in Painswick each week, as well as getting a little pocket money for using your cooking and gardening skills.

We look forward to seeing you.

Patricia Davey

The Gardens of China

Members of Painswick Horticultural society were privileged to be introduced to the characteristics of Chinese gardens by Mr D Coombs, BSc at their meeting on Wednesday 9th March.

Using an informal approach, Mr Coombs pointed out that the essential feature of these gardens is their tranquillity induced by great expanses of calm water. The beauty is created by the wealth of native trees and shrubs such as magnolias, camellias, acers and ginkos, dazzling in spring and a magnificent blend of colour in autumn. Through his excellent slides, we saw that public parks may be closely surrounded by city streets, yet the parks give a deep feeling of serenity to the local residents. They make constant use of parks to sit, with the peace broken only by the breeze moving through the tall bamboos or, in adverse weather, the gently patter of raindrops falling on the smooth, broad leaves of certain trees chosen for this very purpose.

"Borrowed landscape" is a frequent feature of parks where the countryside in the background - a hill or temple is incorporated in the view across a lake to give the impression of a much wider expanse of lovely scenery.

Members also, enjoyed the samples of local crafts in silk and cloisonné work that Mr Coombes put on display.

Pauline Lamont

Coach to Bath

Seats are still available on the coach to Bath on Wednesday 23rd April. The coach leaves Stamages Lane Car Park at 10.00am.



For the return journey it leaves Bath at 5.00pm. Fare £6.00. Bookings by cash or cheque (payable to "Painswick L&B Outings") should be made with Joan Truman, Little Place, Hollyhock Lane, Painswick GL6 6XH. Enquiries to Joan Truman

Readers are reminded that the Police non-emergency number is

0845 0901234

Direct line to Painswick's PC

07799 624643

Bookmark Computers

(of Stroud) Ltd

Buying Advice - Upgrades
Software and Hardware
Repairs - Tuition

01453 886131

Registered at Companies House
Company number 4180684

COUNTRY LIFE HOME IMPROVEMENT

Quality, tailor made:

- Conservatories
- Fitted Kitchens
- Loft Conversions
- Replacement Windows and doors

• All enquiries dealt with personally by the proprietor who has 20 years experience as a quantity surveyor and construction manager.

• All products and workmanship are of the highest standard and carry a 10 year guarantee.

**For free advice or a quotation
Telephone (01452) 813755**

MICHAEL NYE

Fine Woodworking

Beautiful furniture, kitchens, cupboards, doors, windows, boats musical instruments

= YOUR IDEAS BECOME REALITY =

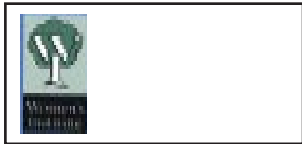
Tel. Edge 01452 814372

W I Meeting - 20th March

Dorothy Daniels opened the last meeting of the winter. A lovely vase of yellow flowers reminded us that spring was not far away. Members were told that the Group Rally of G.F.W.I. would take place in Painswick on June 25th.

As we shall be the hostesses we were invited to provide further recipes to add to the list of delicious dishes already proposed. Congratulations were offered to our quiz team who had recently won their latest contest.

Mrs Lawrence then talked to us about 'Hearing Dogs for Deaf People' - a charity first started in 1981. The dogs selected for training are mostly mongrels and cross-breeds. Sometimes cockers or poodles respond very well. They learn to recognise the sound of a bell and how to alert their owner when he or she has not



heard this signal. Each applicant for such a dog has to undergo a period of bonding with the animal who will need regular feeding and exercise from his new owner. We were shown slides of a variety of trained dogs with their masters. They looked most attractive in their little jackets labelled 'Hearing Aid Dog'. These are not obligatory but are helpful for informing other people of the owner's deafness. Mrs Lawrence concluded with the story of a spaniel whose master suffered a heart attack.

The dog prevented his master from lapsing into unconsciousness by constantly licking him until help arrived. This was all the more remarkable because it was not a duty included in his training.

Margaret Boucher

They came from near and far

Saturday, 15 March, a fine, crisp, sunny day, perfect for meeting up with old friends. At the Falcon Inn from 10.30am onwards this is exactly what nearly 300 old boys and girls from Gyde Home and Painswick School succeeded in doing, some for the first time in over 50 years.

Originally intended for children of the 1940s and 1950s, the reunion also welcomed many others, eager to meet up with erstwhile school friends and Gyde 'family'. Robert Norris, who came to live at Gyde in 1921 and now aged 92, had driven from his home in Hertfordshire for this special occasion. He talked enthusiastically about his plans to visit India next year - such indomitable spirit.

Sister Peggy, who was a house mother at Gyde from 1957 to 1970, talked keenly of the concept of family which influenced so much of the approach to caring for the children during her time there. Enthusiastic and caring even now about her role at Gyde, some of her 'children' now in their 40s and 50s, hovered lovingly around her. Their comments? "All the children loved her. She's the mother we never had and now she's godmother to all of our children." So few words, so full of meaning.

Philip James was one of the children sent from Gyde to Australia in 1950. His visit to England in March was partly to attend the reunion where he met up with Audrey Edwards for the second time in 53 years (the first was in 2000) and partly to meet for the first time a family of cousins he never knew existed until now.

Spilling out into the sunshine, this reunion was a truly joyous occasion. Old school friends had travelled great distances and, at the same time, many who have remained in Painswick also came along. This happy, chatty throng of smiling reunited friends spent hours recalling incidents and personalities and talking about life then and since.

The whole event had been skilfully and faultlessly organised by Brian Jubb whose zeal and boundless energy undoubtedly made the whole occasion such a success. It was the result of months of research, tracking down and enthusiastic but hard work. Brian's impressive display of hundreds of enlarged photographs all round the room and his powerpoint slide compilation provided an endless source of interest and evocation. Without a doubt, this event was worth all the effort.

Painswick Local History Society



GRAHAM FEAKINS HND
Tree Surgeon

- ✓ Tree felling **PROFESSIONAL**
- ✓ Reshaping **QUALIFIED**
- ✓ Stump grinding **FULLY INSURED**
- ✓ Hedge trimming **RESIDENTIAL**
- ✓ Fruit tree pruning **COMMERCIAL**
- ✓ Garden clearance **FREE ADVICE**

OVER 20 YEARS EXPERIENCE

FULL COUNTY COVERAGE

01242 680362

GREEN ORCHARD, DEERHURST WALTON, CHELTENHAM

WB
PROPERTY MAINTENANCE

GATES FENCING
PAINTING DECORATING
WINDOWS DOORS
FITTED KITCHENS
CERAMIC TILING
GUTTERS FASCIAS

LOCAL RECOMMENDATIONS
FREE QUOTES TEL WAYNE
H/01453 753319
M/07752606604

LAWNMOWERS
SERVICE • REPAIR • SALES

- HONDA
- MOUNTFIELD
- QUALCAST
- STIHL
- HAYTER
- ATCO
- FLYMO
- WESTWOOD
- KUBOTA
- COUNTAX

FREE LOCAL COLLECTION & DELIVERY

CHELTENHAM MOWER SERVICES
MOBILE: 0831 282533
TEL: 01452 714098
www.users.globalnet.co.uk/~cmowers

Hockey

Saturday 22nd March

Painswick 1 Cheltenham Civil Service 0
Painswick came to play their last league match of the season on a beautiful afternoon at Broadham. With only one team in the league table separating Painswick from their visitors, an even match was expected and so it proved with neither side having found the net by half-time. Into the second half, Sharon Gillson gained possession and took the ball high into midfield, to place it onto Lisa Bircher's stick who then sent the ball into the Civil Service's goal area. Leah Foster collected the ball and put it into the net. Although jubilant, Painswick knew that the Service would fight hard to find the equaliser and this they nearly did but the shot was blocked by 'keeper Chris Jones. Player of the match: Sharon Gillson.

Rugby

On 22nd March, Painswick's first fifteen met old rivals, Cainscross, at Victory Park in Stroud in a fixture which for many years has seen the prized Barrie Meadows Cup at stake. Barrie was a stalwart member of both Painswick Rugby and Cricket Clubs and the Cherry and Whites have an added purpose to their play in these games. So it proved with Painswick dominating the first half, running in 5 tries, four of which were converted by Chris Dix. In reply Cainscross went over for an unconverted try to make the score 33 points to 5 at half-time. The Painswick kicker was successful with a penalty attempt early in the second-half

and later he converted an excellent try from Rob Andrews. Cainscross scored 2 well worked tries in the second period to leave the result of the match a 43 points to 15 win for the visitors. Painswick's first-half try scorers were, Alex Richardson (2), Ben Pollard, Nick Graham and Austen Smith. The next day Painswick United were also in action in Stroud playing in the final of the Stroud Combination Junior Cup at Fromehall Park against Dursley First Fifteen. Not surprisingly the Painswick second string would always have to battle against their first fifteen opponents and this they did, giving a tremendous performance before going down by 17 points to 7. Painswick's try was scored by hooker, Matt Coombes and converted by full back Russell Thornton.

Other results [(L) indicates league match]

Sat 1 Mar. (L) Chosen Hill FP 48 Painswick 1st XV 5. Painswick United 10 Chosen Hill 2nd XV 10.

Sat 8 Mar. Gloucester All Blues 2nd XV

0 Painswick United 50.

Sat 15 Mar. (L) Painswick 1st XV 12 Aretians 1st XV 22. Painswick United 34 Aretians 2nd XV 12.

Sat 29 Mar. (L) Painswick 1st XV 10 Avonmouth OB 1st XV 34

Cricket

The cricket season gets underway with the league programme starting on Sat 3rd May. On the following day, Painswick travel down the A38 to play the Stone club in the first round of the national Village Championship. Outdoor nets are due to start shortly and anyone interested in joining the club should contact the secretary, Andrew Wise on 01453 755202.

Tennis

Everyone at the club is looking forward to the new summer league season which starts in May. Ladies team practices are on Wednesdays at 6.00pm and Mens on Fridays at 7.00pm. The committee was very pleased to receive the news that the club's application for a new pavilion had been approved. A very successful Quiz Night was held on 28th March at the Broadham Clubhouse with 15 teams competing. The winners were The Sharpe Team led by Val Sharpe.

Beacon subscribers for 2003-04 at 24th March

| | | | |
|--|----------------|--|--|
| | 2003 - 2004 | | |
|--|----------------|--|--|

An amazing early response
- for which,
our thanks!



Cheltenham Garden Machinery

437-439 Lower High Street,
Cheltenham, Glos. GL50 3HU

Tel: 01242 238342

Over 200 Machines on display in our
Prestigious Showroom

Gloucestershire's Premier Garden &
Estate Machinery Dealer



Kestrel Cleaning Services
*Window Cleaning,
Domestic Cleaning,
Garden Maintenance
and Grass Cutting*

Tel: 01453-756934
Mobile 07931-692227

Established 1991



Painswick Bowling Club

Established 1912

The Game of Lawn Bowls

Bowls is a clean and healthy family sport that is not divisive by age, can be enjoyed by able and disabled people on a competitive basis and where Males and Females compete on an equal basis.

Indoor and outdoor facilities mean that it can be played all year round. It is a social game and most clubs have a good social side. It is a game played in a disciplined environment with a constitution and proper rules level of behaviour and standard of dress.

The sport is played at all standards be it roll-County, or International. This is supported as coaching and umpiring is provided on a

Why not give it a go?

The Club is at the Painswick Centre and from the footpath to the recreation field.

above the skittle alley and there is also a shared pavilion with the Tennis Club. There are enviable views down the Painswick Valley to the far hills which can be enjoyed whilst bowling.

New bowlers would be very welcome and are invited to try their hand with the first season being free of charge except for just £5 registration fee. Free instruction will be provided and borrowed bowls are available. The only requirement is then for flat-bottomed shoes or trainers so as not to damage the surface of the Green. White shirts with grey or white trousers/skirts would be required for inter-club matches.

Annual subscription for members and for those bowlers transferring from another Club is £50. Pro-rata reductions for mid season joiners can be negotiated.

Further information can be obtained from :-

*The Club Secretary: John Holmes on Painswick 812755
or Chairman: Bernard Child on Painswick 813255*

Falcon Bowls Club

Hearts are starting to race at the prospect of the outdoor season which is nearly upon us. Harry Mines and his team have been working steadily on the green overwinter, and the pace has increased recently to ensure that it is in perfect condition for the coming season.

We open our green on Saturday 19th April at 2.30pm when all members meet to enjoy a friendly roll up - do come along if you are interested, or alternatively on Fridays at 2pm when we hold our club afternoon.

Our fixture secretaries have produced an ambitious programme which includes some 45 mixed matches, 31 senior citizen matches, 27 ladies including 12 league matches and 18 mens matches including 11 league matches. You will conclude from this that we are committed to a full season of bowls, and would welcome new

members, especially ladies to help us on our way.

Our ladies have had mixed success winning the match against Barnwood ladies to go through to the semi finals of the Gloucester Indoor Ladies Knockout where they drew Fairford but lost by 3 shots. Sadly they lost in the quarter finals of the MidGlos knockout, but remain in the Cotswold Interclub and play off in the semi-finals.

A mixed 4 rink won well in a club friendly at Cotswold Indoor Club. However our two rink team lost to Royal Forest of Dean in the Interclub League but won against a MidGlos side to go through for the play offs where we are guaranteed a 6th place and prize money of at least £25.

Dont forget to call up and see us during the summer. Make yourself known to a committee member and we will find you a cup of tea. Phone me on 812700 and I will give you dates of our home matches.

David Ryland



Paul A. Morris
City & Guilds
General Builder * Plastering * Patios
Dry Stone Walling
Natural Stone Work A Speciality
Hard Landscaping
Windows, Doors & Conservatories

19 Wickridge Close, Uplands,
Stroud, Glos GL5 1ST
Telephone (01453) 752004
Mobile 0781 8087375
Email: paulmorris72@Hotmail.com

FREE ESTIMATES

Painswick Horticultural Society's Annual Show

To give members time for preparation, here is a list of the Handicraft Section items for the society's show to be held at the Painswick Centre on Saturday 6th September 2003.

◆ A ready made napkin folded for a dinner party



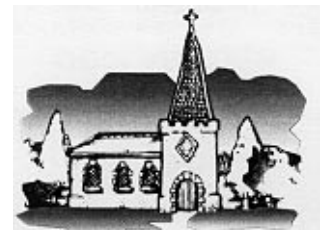
◆ A child's (5-10 years) knitted hat and scarf

- ◆ A curtain tie-back
- ◆ A hand-made writing case for travel
- ◆ A sleeveless padded waistcoat
- ◆ A cot rug in any material
- ◆ A painted view from my window
- ◆ A birthday card of a country scene
- ◆ A photograph of a tumbledown Cotswold cottage or derelict building

◆ A photograph of feet - human or otherwise (with a caption if desired).
Further details from Philip Berry on 813227

Readers are reminded that the Police non-emergency number is
0845 0901234

PAINSWICK VILLAGE DENTAL SURGERY
Les Robinson B.D.S.
Private, Denplan



Appointments available 6 days a week and late evening Thursday

* Cosmetic Dentistry * Hygienist
* Personal Professional Service in Relaxed Atmosphere

TEL: 01452 814427

Hoyland House, Gyde Road, Painswick, Glos.
GL6 6RD

An A-J of flowers to be found in many gardens.

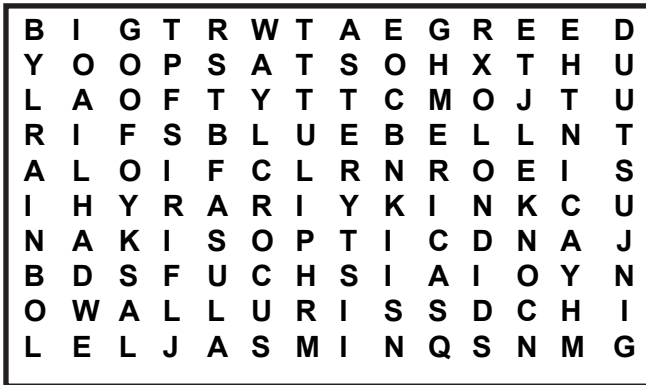
This month we have hidden the names of just twelve flowers to be found in an average garden.

Can you find them?

They all run along a straight line, in any direction; but some might be backwards.

No prizes - just a bit of fun.

Answers next month.



Answers to last month's WordSearch on major towns in the south of England.

- SALISBURY
- PLYMOUTH
- TRURO
- SWINDON
- DOVER
- BRIGHTON
- BATH
- IPSWICH
- GLOUCESTER
- OXFORD
- YEOVIL
- EXETER



Beaky

Traditional May Day

and Skittles

Monday 5th May in Sheepscombe Village, starts at 11.00am in the Village Hall
A full day of fun with everyone welcome.

- Plants
 - Homemade food and crafts
 - Bric a Brac
 - Tombola
 - Bottle Bonanza
 - Books
 - Games for Children
 - Maypole dancing
 - Skittles Championship
 - Delicious Food and much much more!
- For further information

Patchwork

Coffee

The Patchwork Mouse is opening a coffee club for the discerning. Dawn Mallinson told the Beacon that patrons are invited to "Sit and savour a delicious cup of coffee or hot chocolate while you browse. There will be some scrumptious munchables for the more adventurous". A new collection of cards, local crafts and puzzling gifts are on offer.

Opening Easter week.

PROPERTY REPORT at 26th March from Hamptons International

It's hard to think of a more beautiful place when the sun is shining and the daffodils are out than Painswick and its surrounding villages. This would sound a bit clichéd but the reality is that given the huge number of viewings we are doing and the surge of instructions we are taking on that the property market remains as solid as ever. On one property alone that was advertised as property of the week in the Sunday Times, in the space of 2 weeks, we received over 200 enquiries and 50 viewings with a subsequent offer that was accepted. It would appear that as long as properties are put on at realistic prices, and the marketing efficiently and comprehensively underway, that vendors can expect to see offers coming in.

There are signs that summer is coming early this year and with it, it has brought some new instructions. Notably, the picturesque Tump Farm at Edge with 18 acres, the stylish Grey Gables in Painswick with adjoining paddock, the unique Coach House at Paradise, a desirable bungalow with one acre garden - Horsepools Piece at Edge, Overmead and Staveley with their panoramic vistas on the edge of the village, The Hawthornes with its 4 acres at Upton Hill and the spacious modern house - Beechdene with its beautiful views at Sheepscombe.

Recent completions include Bivia at Edge, 2 Spring Cottages in the heart of Painswick and Otterspool - the contemporary house in Kingsmill Lane and many more in our pipeline.

We are pleased to be holding an **Open Day at Painswick Court** between Painswick and Sheepscombe on **Saturday 26th from 10.30 - 4pm** - a unique development of Cotswold grade II listed barns, two of which are already reserved. Everyone is welcome and we look forward to seeing you there.

Even though Hamptons International are now open for telephone calls and viewings 7 days a week it seems there are not enough hours in the day to meet the demand. Painswick continues to be an increasingly sought after area, and with our six dedicated staff, backed by our 55 local and national network of offices, we are rising to the challenge.



STROUD MINCHINHAMPTON
MAYFAIR LONDON

Victoria Street PAINSWICK
01452 814655
www.murraysestateagents.co.uk



Estate Agents

**A network of over 50 offices,
16 in London 9 International**
The Old Chapel, Bisley Street, Painswick. 01452 812354
The ultimate property se@rch: www.hamptons.co.uk

Cotswold AONB Management Plan Consultation

We made mention last month (*Cotswolds AONB* on p.13) of the fact that there is to be unified Board to manage the near 800 square miles of the Cotswolds AONB from April next year.

The change could bring significant benefits from the application of whatever funds are available within an overall strategy, instead of the disparate policies of several agencies as at present. Statutory authorities range from Gloucestershire and other County Councils through District Councils and Parish and Town Councils; there also being such as the utility boards e.g. Severn Trent and electricity suppliers, tourist boards, highway agencies, English Heritage, defence establishments, and so on. Numerous voluntary organisations and others interested or with a long history of advancing as well as preservation of the Cotswolds include local conservation societies, the CPRE, Ramblers Association, stone wallers, canal trusts, RSPB, traders, and far more than can be listed here.

Providing these with a common reference point for advice, policies, funding and so on could, it is believed, greatly improve lines of communication and action.

The Department of the Environment, prior to setting up the new Board, decided to seek the views of all parties interested in this change through a consultative process. That individuals resident across this extensive area may have little knowledge of the existence of the process is not too surprising when one takes into account the massive amount of information of which we may be expected to be aware. Not so most concerned voluntary organisations, this because those inspiring the consultative process could track down names and addresses and invite participation.

That consultative process is now well advanced, and broad agreement reached between those participating. Just how much credence will be given to the expressed wishes of those taking part remains to be seen when the Board is convened and its remit specified by the DoE. Anyone interested can obtain the latest information from BDOR Limited who are acting for the Cotswolds AONB Partnership, BDOR, Freepost (SWB2019), Bristol BS1 6ZY, telephone 01179.105200.

In case it stimulates a desire to express opinions and/or get

involved the following may be of interest. Those 50 or so who have attended meetings have begun to identify broad headings and embryo policies within each.

Some are given here by way of illustration:

DEVELOPMENT

- Specific policy guidelines about development
- The Board to be statutory consultee for all planning applications in or adjacent to the AONB
- The Management Board to include representatives of environmental and amenity groups

TOURISM

- Cotswold Way accommodation and standards
- Caravan and camp sites

TRAFFIC, TRANSPORT and PARKING

- Routing of HGV
- Reduction of environmental impact
- Reopening of rail links

HERITAGE and EDUCATION

- Renovation and repair of buildings
- Research into history and archaeology

ACCESS and RECREATION

- Projects which are to detriment of AONB
- Reduction in car access to AONB recreation facilities

AGRICULTURE, WOODLANDS and FORESTRY

- Raising awareness of the importance of farming and agriculture

- Increasing local food for local people

LANDSCAPE, CONSERVATION and NATURE

- Promote awareness and understanding
- Maintain and enhance distinctive local architecture.

We will carry further reports if readers raise matters with us, or share views expressed to BDOR in Bristol.

Etchings in the Library

Robert Ball will be holding an exhibition of his etchings in Painswick Library from Sunday 27th July until Saturday 3rd August



Raymond Barnard

Ray was proud to be born and bred in Painswick, the eldest of ten children. He played rugby for Painswick, loved to race his pigeons, and also played skittles.

He was in the RAF during the war, served in Burma where he serviced Dakota aircraft, and was awarded the Burma Star. He loved to help people, never expecting thanks.

He and I were friends and very close for over nine years, and were each others Rock. He had a heart of gold and my life was made the richer for knowing him. May he get his reward in heaven. God bless.

Joan Ridgill

**Sculpture is fun at
AMBER SCULPTURE STUDIO**
No previous experience needed.
Tools, tuition, materials supplied.
Try Wood Carving,
Stone Sculpture,
Clay Modelling
Weekly and Saturday Workshops
Phone David Lovemore
Any time 07977 836728
Evenings 0845 456 8227

BAY TREE GARDEN SERVICES

Landscaping
Fencing
Lawn and Hedge Work
General Maintenance
Water Features
Garden Design
Tree Surgery
Free Estimates ♦ Fully Insured
Tel: (01452) 538264
Mobile: 07900 684899
www.baytreegardenservices.co.uk

PLANNING MATTERS

A summary of information received from the Parish Council. Painswick locations unless indicated.

NEW APPLICATIONS

SPRING BANK, STEANBRIDGE LANE, SLAD Erection of single storey extension.
LONG MYND, THE HIGHLANDS Erection of conservatory to rear (to include demolition of existing conservatory).
QUERCUS BLUFF, THE PARK Resurfacing of farm track (retrospective application).
MOUNT COTTAGE, VICARAGE STREET Erection of first floor extension.
Land adjoining TALL TREES, COTSWOLD MEAD Erection of 1 detached dwelling
CARRWOOD COTTAGE, CHELTENHAM ROAD Erection of extension.
LONGRIDGE MEEND, BULLS CROSS, SHEEPSCOMBE Alteration and extension to existing dwelling; new cart shed and relocation of access to highway.
COPPER BEECHES, WOODBOROUGH CLOSE, KNAPP LANE Erection of a conservatory.
RED STABLES, YOKEHOUSE LANE Replacement gates and new gates; construction of woodshed, summer house and greenhouse; relocation of oil tank; increase in area of hardstanding.
THE OLD FARM, EDGE Erection of a garden room.
LITTLE DENE, COCKSHOOT, SHEEPSCOMBE Erection of a 1st floor extension, porch and replacement dormer window.
OLD MEADOW, COTSWOLD MEAD Erection of 2 storey extension.
THE MARTINS, VICARAGE STREET Erection of a conservatory.
14 CHURCHILL WAY Erection of single storey extension.

REVISED PLANS

MOUNT COTTAGE, VICARAGE STREET Erection of first floor extension. Main changes: Removal of gables.

CONSENTS

Farmyard adjacent to PAINSWICK LODGE, SHEEPSCOMBE Additional windows and alterations to internal layouts of unit 1, Painswick Court.
Farmyard adjacent to PAINSWICK LODGE, SHEEPSCOMBE Division of current unit 1 (Tithe Barn and Cottage) into two separate dwelling units.
CROFT COUNTY PRIMARY SCHOOL, CHURCHILL WAY Erection of classroom extension.
HYETT ORCHARD, HYETT CLOSE Prune lime tree at 8 Hyett Orchard.
HILL VIEW COTTAGE, VICARAGE STREET Removal of 1 metre of internal wall in extension to open up doorway.

REFUSAL

GYDE HOUSE, GYDE ROAD Retrospective application for erection of CCTV poles.
THE MALT HOUSE, VICARAGE STREET Erection of garden room extension to dwelling.

Madeline Curran
Gardener

Maintenance of
Beds and Borders
Lawnmowing
07766 122799

Winter Sunshine

Though still in my freshman's year as a resident, I have come to realise that anything and everything happens in Painswick. But I was taken by surprise to discover that in Painswick summer comes in February. One day in January I was diffidently told about a 'reading' in the church rooms in the afternoon of Saturday 1st February, that it was in aid of charity and that I might like to go. This conjured up visions of Dylan Thomas, Byron, Shakespeare, perhaps Andrew Motion, Confucius for a laugh and the like, before a somewhat sparse audience. Though not much my scene, I was curious to discover another facet of village life, so I set off on a grey day to the church rooms. I was taken aback on entering to find the rooms ablaze with pseudo sunlight and Robert Burgess playing a selection of tunes from the shows to a large audience seated around beautifully decorated tables with gossip in full flow -(sorry), all in active conversation mode! This was promising, I thought.

The five stalwarts: Miles Curtis-Hayward, Pat Daly, Avril Dorey and Ralph Kenber then appeared dressed in blazers, sun hats, beach clothes and sun glasses, being led to the rostrum and deck chairs by the redoubtable Pauline Foreman who announced a programme she called 'Summertime'. There followed some 45 minutes of light, winsome and most entertaining readings selected from who knows what sources, though I do recall Joyce Grenfell, John Betjeman and Kenneth Graham which will give you a clue to the sort of fare dispensed. But that was not all. Our modest entrance fee had included the most delicious scones with strawberry jam and cream in plenty with copious pot-fulls of tea. It was all most enjoyable and quite outside my hitherto mundane urban living experience. So I wondered why there was no mention of this signal event in the March issue; hence this note. Credits are due to Pauline Foreman who conceived the idea, helped by Chrissy Stephenson-Oliver, the technicians of the Painswick Players and the readers who delivered themselves with commendable panache and who together raised £50 for the Rest Haven. Can we expect to find Pauline Foreman dispensing an 'Ice Cool' reading in June, I wonder.

Maurice Maggs

Cranham Village Auction

Once again it is the time to search through your lofts and under the stairs to find those things you no longer use and turn them into cash by selling them at Cranham Village Auction.

This twice-yearly event, which has been running for over twenty years, is enjoyable for both vendors and buyers. It takes place on Saturday 26th April 2003 at 12.00, with viewing from 10.30. We expect to have a variety of interesting lots of furniture, china, glass, paintings, antiques and bric-a-brac.

The proceeds always go to a Village organisation and this time it is in aid of the Village Hall funds.

To sell all you need to do is to get an entry form from 812077 and bring your items along on the day prior to the sale – it couldn't be easier. But whether you're buying, selling or just curious you will be made welcome and it is a pleasant way to spend time on a Saturday afternoon.

Cotswold Care Support Group

The Painswick branch of the Cotswold Care Support Group will be holding a Spring Coffee Morning at the Town Hall on Saturday 26th April, 10.00 am. to 12 noon.

There will be cakes, cuttings and good quality clothes on sale and there will also be a raffle. Coffee and entrance fee will be 70p. Donations of cuttings and cakes gratefully received on the day.

The Cottage Clinic

PHYSIOTHERAPY AND SPORTS INJURIES

We treat pain...

neck
shoulders



and everything
in-between!

knees
feet

Also post-operative

Please telephone for an appointment
01452 812344

Roland Boggan

Chartered Accountant

Fast & Efficient Service
Limited Companies
Partnerships & Sole Traders
For all your Accounting, Tax
and Business Advice

Telephone 01452 812075

The Painswick Beacon

detail until the next issue
and mostly non-weekly after that

VILLAGE DIARY

| | | | | |
|-----|----|--|-----------------------|--------------------|
| Sat | 5 | Wives' Fellowship Coffee Morning | Town Hall | |
| Mon | 7 | Calligraphy Course concludes | Library Room | 10.00 to 4.00pm |
| Tue | 8 | Dog Training Club: Tuesdays | Christ Church Hall | 9.30 to 12noon |
| | | Mothers' Union: 'Beeches': Past, Present & Future - Mr. David Seed | Church Rooms | 2.30pm |
| | | Charter 750th Anniversary Service | St. Mary's Church | 7.15pm |
| Wed | 9 | Traditional Tea Dances: Wednesdays | Painswick Centre | 2.00 to 4.00pm |
| | | Bingo Session: all welcome – prizes (Wednesdays) | Painswick Centre | 7.30pm |
| | | Horticultural Society: Plants for Scent & Colour - Miss B C Jones | Town Hall | 7.30pm |
| Thu | 10 | Coffee Morning in aid of Cobalt Unit Appeal Fund | Town Hall | 10.30 to 12.30pm |
| | | W.I.: The Inca Trail - Janet Jenkins | Town Hall | 2.30pm |
| | | Music Appreciation Group: Season Finale – the Members Choice | Town Hall | 7.30pm |
| Fri | 11 | WI Market – Fridays | Town Hall | 10.00am |
| | | Senior Circle: The Poster as Art – Peter Clarkson | Town Hall | 2.30pm |
| Sat | 12 | Helen & Anne's Spring Coffee Morning. | | |
| | | Main charity 'Surgery Fund' | Town Hall | 9.45am - 12 noon |
| | | Music Society Concert: The Zephyr Wind Quartet | St. Mary's Church | 3.00pm |
| | | Charter Dance: celebrating grant of the Charter | Painswick Centre | 7.30pm |
| Tue | 15 | Local History Society: Research Evening | Croft School | 7.30pm |
| | | Charter Anniversary Committee | Town Hall | 7.30pm |
| | | Jazz Evening: Local musicians – no charge | Ostlers Room | 8.30pm |
| Wed | 16 | Probus AGM | Ostlers Room | 10.00am |
| | | Parish Council | Town Hall | 7.30pm |
| Thu | 17 | WI Market: 'Tasters' and coffee available | Town Hall | 10.00am |
| Fri | 18 | Good Friday Procession of Witness -starts from | St Mary's Church | 10.25am |
| Sat | 19 | Falcon Bowling Club: Green reopened | Falcon Bowling Green | 2.30pm |
| | | Painswick Blues: Mike Sanchez & Al Gare | Painswick Centre | 8.00 for 9.00pm |
| | | Copy dateline for May to Iris McCormick | | |
| Mon | 21 | Easter Monday public holiday | | |
| Wed | 23 | Coach to Bath: Enquiries 813965/813227 | Stamages Car Park | 10.00am |
| Fri | 25 | Senior Circle: Travel Galore and much much more | Town Hall | 2.30pm |
| | | Pip Millard | | |
| | | Diary dateline for May to Edwina Buttrey | | |
| Sat | 26 | Cotswold Care Support Group Coffee Morning | Town Hall | 10.00 to 12.00noon |
| | | Cranham Village Auction | Cranham Village Hall | 12.00noon |
| | | Music Society Concert: Susan Gritton, soprano | St. Mary's Church | 3.00pm |
| | | Eugene Asti, piano; Joy Farrall, clarinet | | |
| Sun | 27 | Bird Club: field trip to Frampton on Severn | | 9.30am |
| Wed | 30 | Probus: 'Gertrude Bell' - Mrs Jan Long | Ostlers Room, Falcon | 10.00am |
| | | Maypole Club: Bring-and-Buy and Coffee Morning | Yew Tree House | 10.30 to 1.00pm |
| | | Painswick & District Conservation Society AGM | Town Hall | 7.30pm |
| | | Speaker from AONB | | |
| | | Wives Fellowship: Opening Service | Friends Meeting House | 8.00pm |
| | | | House | |
| | | MAY | | |
| Thu | 1 | Cotswold Care Support Group Meeting | Ashwell House | 2.30pm |
| Fri | 2 | Carers and Fellowship Group (Lower Washwell) | Wynstowe | 2.30pm |
| | | 'Heavenly Music' - Catherine White harp | St.Marys Church | 7.30pm |
| | | Painswick Blues: The Yarbbirds | Painswick Centre | 8.00 for 9.00pm |
| Mon | 5 | Traditional May Day Skittles | Sheepscombe | from 11.00am |
| Wed | 7 | Theatre Club to Malvern | The Falcon | 12.30pm |
| | | Bird Club: field trip to hear nightingales | Highnam Wood | 7.30pm |
| Thu | 8 | Painswick Players present "Don't Dress for Dinner" (also Fri 9th & Sat 10th) | Painswick Centre | Daily |
| Fri | 9 | Senior Circle: Whither the WRVS – Jane Sargent | Town Hall | 2.30pm |
| Sat | 10 | Horticultural Soc.: Chairman's Spring Social Event | Stamages Car Park | 2.30pm |
| | | Music Society Concert: Quatuor Danel, string Quartet | St. Mary's Church | 3.00pm |



| | | | | |
|-----|----|--|--|---|
| Sun | 11 | Christian Aid Week 11 - 17 May Christian Aid Service | Catholic Church | |
| Wed | 14 | Christian Aid Shop (Wed - Sat) Bird Club: field trip Dowdeswell Nature Reserve Cheltenham Art exhibition Horticultural Society: Sweet Peas – Mr.G Alway | Christ Church Hall A40 Dowdeswell Library Rooms Town Hall | Daily 10.00am 7.30pm 10.00am to 4.00pm |
| Sat | 17 | House History Workshop Painswick Blues: Bluze | Pitchcombe Village Hall Painswick Centre | |
| Tue | 20 | Local History Society: Annual Outing | Croft School | 8.00 for 9.00pm 7.30pm |
| Wed | 21 | Travel Tokens: last day for collection Parish Council Wives Fellowship: Porcelain Dolls – Mrs P Rodford | Post Office Town Hall Christ Church | 7.30pm 7.30pm 8.00pm |
| Fri | 23 | Senior Circle: Whale and Dolphin watching in the Hebrides – Elaine Howell | Town Hall | 2.30pm |
| Mon | 26 | Spring Bank Holiday | | |
| Wed | 28 | Annual Parish Meeting | Town Hall | 7.30pm |

JUNE

| | | | | |
|-----|----|--|---------------|--------|
| Wed | 4 | Wives Fellowship: Travel in Peru – Mr.Mrs.Leoni | Christ Church | 8.00pm |
| Fri | 6 | Senior Circle: Life on the Street – Tony Crook | Town Hall | 2.30pm |
| Sun | 8 | Bird Club: Stroll along Kingsmill Lane | Kingsmill | 9.00am |
| Sat | 14 | 'Tibulate': Brass Ensemble return by popular request Painswick Blues: From America – Bill Sheffield | Edge Church | 7.30pm |
| Mon | 16 | Calor 'Village of the Year': judging during week | | |
| Tue | 17 | Local History Society: Annual General Meeting | | |
| Wed | 18 | Parish Council | | |
| Fri | 20 | Senior Circle: A Young Girl with a Mission - Billie Grant The Painswick Midsummer Charity Ball | | |
| Sat | 21 | Painswick Blues: The Daniel Smith Blues Band | | |
| Wed | 25 | WI Group Rally: in Painswick | | |
| Fri | 27 | Carers and Fellowship Group (Lower Washwell) Painswick Blues: The Animals | | |
| Sat | 28 | Painswick Blues: The Animals - again | | |

JULY

| | | | | |
|-----|----|---|--|--|
| Tue | 1 | PCMS: AGM Speaker – The Revd John Longuet-Higgins | | |
| Wed | 2 | Wives Fellowship: Amateur Acting – Lesley Wolowiec | | |
| Fri | 4 | Senior Circle: Are you missing out? – Jackie Herbert | | |
| Sat | 5 | Beacon Village Quiz | | |
| Fri | 11 | Painswick Players 'Living Legends' | | |
| Wed | 16 | Wives Fellowship: Barbecue | | |
| Sat | 19 | Painswick Blues: Blues Summer Party | | |
| Fri | 26 | Gloucestershire Guild of Craftsmen: Exhibition | | |
| Sun | 27 | Etching Exhibitions – Robert Ball (to 3rd August) | | |
| Wed | 30 | Wives Fellowship: Running a B&B – Jean Burgess | | |

AUGUST

| | | | | |
|-----|----|---|--|--|
| Mon | 25 | Gloucestershire Guild of Craftsmen: Exhibition ends | | |
|-----|----|---|--|--|

SEPTEMBER

| | | | | |
|-----|----|---|--|--|
| Sat | 6 | Horticultural Society: Annual Show and Exhibition | | |
| Fri | 12 | Senior Circle: How can we help? – Jane Rowe | | |
| Mon | 15 | Bird Club: field visit Keynes Country Park | | |
| Fri | 26 | Senior Circle: Poundbury – Val Hurlston-Gardiner | | |

OCTOBER

| | | | | |
|-----|---|--|--|--|
| Thu | 9 | Bird Club: Wildlife in the Garden + bird feeders | | |
|-----|---|--|--|--|

NOVEMBER

| | | | | |
|-----|---|---|--|--|
| Thu | 6 | Bird Club: Birds, Mammals and Flowers in the UK | | |
|-----|---|---|--|--|

Churches Together Around Painswick (CTAP) Holy Week Services and events

Monday 14th

7.30pm. *LMT. Edge. Compline.*
8.00pm. *Christ Church Hall. Prayer Imaging with Easter Readings.*

Tuesday 15th

7.30pm. *LMT. St. James the Great, Cranham. Compline.*

Wednesday 16th

7.30pm. *LMT. Harescombe, Compline.*

Maundy Thursday 17th

7.30pm. *St. John's Sheepscombe. Communion.*
8.00pm. *Christ Church. Worship and Communion.*

Good Friday 18th

10.25am. *St. Mary's Church. CTAP Procession of Witness.*

11.30-12.15pm. *Cranham. LMT. Service.*

12.00-3.00pm. *St. Mary's Church. Three hours' meditation.*

2.00-3.00pm. *Pitchcombe. One hour meditation.*

Saturday 19th

8.00pm *Cranham. LMT. Watch Service.*

The Day of Resurrection. Easter Day. 20th

6.00am. *Cranham. Dawn Celebration.*

8.00am. *St. Mary's. Holy Communion BCP.*

8.00am. *Edge. Holy Communion.*

8.30am. *Christ Church. Early Worship and Communion.*

Breakfast afterwards. Please book with Fiona Fletcher on 812240 or Jill Gyde on 812587.

8.30am. *RC Church of Our Lady & St. Therese. Mass.*

9.00am. *Harescombe. Holy Communion.*

9.30am. *St. Mary's. Holy Communion.*

10.30am. *Christ Church. URC & Baptist Festival of Worship.*

10.30am. *Friends' Meeting House. Meeting for Worship.*

10.30am. *Pitchcombe. Holy Communion.*

10.30am. *Edge. Worship Team. Children's Service.*

11.00am. *St. John's Sheepscombe. Holy Communion/Baptism.*

11.00am. *St James the Great, Cranham. Holy Communion.*

6.15pm. *St. Mary's. BCP Evensong.*

6.30pm. *Sheepscombe. Methodist Chapel. Celebration of the Lord's Supper.*

For details of Services at Prinknash Abbey and the RC Church in Stroud, please see the notice board at Stames Lane Car Park.

Painswick Weather

Report from Sheepscombe School for the period 21st February to 20th March might have appeared here. Sadly, the school has apologised for there being no report this month as "the max/min thermometer was struck by an over enthusiastic cricket player"! A fascinating poem from one pupil is printed here.

A SUNNY DAY IN THE COUNTRYSIDE

On a sunny day in the countryside
You can smell the smell of manure
And silage
The smell of a farmer mucking out an old smelly barn.

On a sunny day in the countryside
You can touch the rust on the old metal gate
The sharp barbed wire on the fence
The feel of the wet grass as I lay back.

On a sunny day in the countryside
You see people walking
Plants, flowers and crops
Farmers in the fields
On the tractor you see the sheepdog.

On a sunny day in the countryside
You hear the laughter of children in the meadows
The chug of the tractor and the wind in the trees
That's a sunny day in the countryside.

Jennifer Edmonds age 10 - Sheepscombe School

Music Appreciation

Introducing her presentation on William Walton on 27th February, Jane Rowe said this had been a steep learning curve for her as previously she had known very little about him. She was going to keep talking to the minimum and let his music tell the story. Walton was born in Oldham of a musical and relatively poor family. He won a scholarship as chorister at Christchurch, Oxford. At 14 years he wrote his first composition which he sent to Hubert Parry. We heard the first movement of the Violin Concerto in A minor composed when he was 26 years and "Babylon was a great City" from Belshazzar's Feast. Walton was always beset by money problems, so he started to compose Film Music and Ballet Music. He also wrote for three coronations: Edward VIII's (which did not take place), George VI's and Elizabeth II's. We listened to his one-act opera "The Bear" based on Chekhov's vaudeville also known as the 'The Proposal' for which Jane had provided the words. Later in his life he wrote for the Solo Guitar - 5 Bagatelles of which we heard the first and third. It was an evening of musical variety and interesting to learn about one of our more modern composers.

Anne Kenber

Members enjoyed a "double bill" on 13th March, comprising the 'Ubiquitous Waltz' and 'Bird Music'. For the first half, Laurence Turner, with references to the knee-tapping Tyrolean dance origins of the waltz (followed by the concerns expressed about its effects on health and morality!) launched us through a kaleidoscope of different expressions of the waltz. We heard orchestral versions from Sibelius (Valse triste), Dvorak and Berlioz (Symphonies), Opera from Verdi (Traviata), R Strauss (Der Rosenkavalier) and Lehar (Merry Widow); also, a favourite Chopin piano waltz (no.9) and even a guitar solo from Brazil.

In the second half, Maurice Maggs (supported by Patricia Burrows) presented a similarly varied range of bird sounds as expressed through music. Impressionistic versions came from Respighi (Pines of Rome) and Handel (Organ Concerto no.13) - both with Cuckoo and Nightingale sounds; followed by lark sounds from Messiaen. The audience were spellbound by Cantus Arcticus by Rautavaara, which convinced us that a flock of wild swans had flown into the Town Hall! Later followed a number of nightingale songs (from Rita Streich, Elizabeth Schuman and others).

A thoroughly enchanting evening from all presenters.

Stewart Price

CHIROPODY

at
Painswick Surgery
Gyde Road

Appointments
01452 812545

PETER ELY PLUMBING & HEATING

General Plumbing
Central Heating (Gas, LPG, Oil)
AGA/Rayburn Servicing, Solar Water Heating

CORGI Registered

TELEPHONE 01452 814305
MOBILE 07779 099320

Woodland Cottage, Jack's Green, Sheepscombe

MINI-ADS

Tap dancer urgently needed to complete cast for local production next month! Stardom awaits. 812232 or 812167

Mother Care Pram – Push Chair – Baby Cot – in box as new - £85. Solid Wood Doors – seven in number. 1930's four panel style - £10 each. Wall Display Cabinets – small. £15 each. 814196

Canaries –Lanzarote. One bedroom bungalow on quiet beachfront resort with three pools. Equipped with full kitchen, Sat TV, Fans, and Safe.
Restaurant nearby. Tel. 01452 611873.

Opera Tickets – Two tickets for the Opera Carmen at the Arena di Verona, Italy on 27th June 2003 - £120 ono – impending arrival of first child forces sale! Tel: 812978.

George III Style mahogany Corner Cupboard 5'10" high and 26" wide. £500. 813122

Colony/Hive of bees wanted. Please phone 813835 or Mobile 07712 184745

Peter Storm Fleece Size M £12. Zamberian Boots Ladies Size 6. £30. large Log Basket £15. Large BBQ. £15. 813321

Books – Small collection of American history books. 813570

Studio/Office 12feet x 11feet Fully insulated, Double Glazed. External connections top fitted lighting, heating, water basin. One year old. Little used. Excellent condition. £6,000 o.n.o. (£10,000 new). Tel 07867 558321

Flymo Electric Mower for sale (Turbo Compact330) with grassbox and variable heights. Blade length 33cms. Little used. £35 ono. 813444.

MINI-ADS - non-commercial, maximum of 30 words - are 10p per word with a minimum payment of £1. Maximum of 14 accepted per month. Beacon subscribers have 25% discount.

Please send money with mini-ad to Philip Oakley, Stoneleigh, Gloucester Street, GL6 6

*Q N
If paying by cheque, please make it payable to The Painswick Beacon. Receipts are*

PAUL COOKE

COMPLETE GARDEN MAINTENANCE

MOWING HEDGE CUTTING
PATIOS PONDS



Free estimates
Phone 01452 813738
Mobile 07702 912392

VACUUM CHIMNEY SWEEP
Phone 01452 813738

The Personal Column

Babies

Congratulations to CHARLES and SOPHIE MORRISON on the birth of a son, Alexander, on 9th March; a first grandchild for Jane and James Morrison

also to LAURA and JEREMY SLADER-HAYS on the birth of a daughter, Matilda Anne, on 18th February; a first grandchild for Nick and Maggie Slader,

Wedding

Congratulations to JOHN LANYON, formerly of Vicarage Street, and FIONA WILDING of Rosemoor, who were married on 28th March in the chapel at Cotehele in Cornwall where John is Head Gardener.

90th Birthday

Congratulations to DOROTHY HAYGARTH who was 90 on 28th February.

80th Birthdays

Congratulations to JOHN McCABE who was 80 on 9th March,

also DULCIE BROTHERTON who will celebrate her birthday on the 18th April.

Congratulations

Well done, JOHN HULME on getting the motor-cycle you always wanted!

Get well soon

Best wishes for a speedy recovery to AUDREY PRICKETT, MARY FRANCIS, MARY PAGE, JOHN HOGG, JOHN JEFFRIES, DENYS HILL and DOREEN BIRT.

Condolences

Our sincere sympathies to the families and friends of SUE AVERY, EDITH BURFORD, TOM MARTIN, ALICE PLAYLE and ENA AUSTEN who have all died recently.

Farewell

DOROTHY HURN has moved from Hyett Orchard to be near her family in Bristol, also JANE HUGO is moving to Stonehouse,

also JAN CAMPBELL who is moving to Oxford

and ELAINE HOWELL who is leaving Painswick.

Welcome

We would like to welcome Mr and Mrs PORTMAN to Bivia, in Edge

also Mr and Mrs HEWSON to 2 Spring Cottages,

also Mr and Mrs WEBB to Otters' Pool in Kingsmill Lane

and CAROL DAVIES who is moving into Spring Cottage, Stepping Stone Lane

and, on holiday from the Gabon, to the Yolland family (Stephen, Sue, Ben, George and Sam) who are Andy and Arthur Lock's family.

Thank you

I would like to thank my family and friends for all the help and support during my recent stay in hospital, and for the many beautiful flowers and cards I received.

Rose Smith



Dorothy Haygarth admiring a floral arrangement sent by her favourite god-daughter.

Dorothy moved to Painswick from Ipswich in the mid 1960s when her husband was posted to this area as the local Inspector of Factories.

NEXT ISSUE

Publication Date

SATURDAY 3rd MAY

Items for publication to Iris McCormick, St.Anne's, Gloucester Street GL6 6QN

SATURDAY 19th APRIL

Mini Ads to Philip Oakley, Stoneleigh, Gloucester Street GL6 6QN by

SUNDAY 20th APRIL

Business adverts to Liz Fisher, Harebell Cottage, Blakewell Mead GL6 6UR

THURSDAY 17th APRIL

Diary items (only) to Edwina Buttrey, 14 The Croft, by

FRIDAY 25th APRIL

Letters and articles for publication are welcomed on computer diskette (returned after use) or by email to:

painswickbeacon@supanet.com

Items to be published, and other mail for the Beacon Committee, can also be placed in the **Beacon Post Box** in New Street (next to the telephone kiosk).

Please provide your name, address and a contact phone number.

The **Beacon's telephone number is 814500**, and can accept short recorded messages: our **fax is on 01452.814500**

Beacon Committee

Editorial/Production Team

Leslie Brotherton

814500

Terry Parker (& Sport)

812191

Copy Editor: Iris McCormick

812879

Personal Column: Rachel Taylor

813402

Diary: Edwina Buttrey

812565

Feature Writers:

Carol Maxwell

813387

Jack Burgess

812167

DAVID ARCHARD

In association with
Philip Ford & Son Ltd

FUNERAL DIRECTORS
AN INDEPENDENT FAMILY BUSINESS

Private Chapels of Rest
24 Hour Personal Service

DIRLETON HOUSE
CAINSCROSS ROAD
STROUD

01452 812103
or 01453 763592

The
**Anthony
Fisher**
Curtain Company

SPECIALIST CURTAIN MAKER

A very personal advice and making service for simple drapes or elaborate window dressings. For an appointment to see thousands of fabrics, everything from Sandersons to Coloroll, in your home or my office/showroom at:
41 Brunswick Road, Gloucester

Please ring **Glos 309333 (day) or Painswick 812130 (evenings).**