

The Painswick Beacon

Vol. 25 No.12

March 2003

Affordable housing setback?

Councillors were disappointed when, at the recent meeting of the Parish Council it was learned that a letter had not been received from the Gyde Trust regarding the possible release of the parcel of land between the surgery and the barn alongside the A46 for affordable housing. The land, 0.36 acres of the 3.86 acre field, was intended, with the approval of the Charity Commissioners and the Trustees, to be purchased by the Fossway Housing Association to be developed in conjunction with the Parish and District Councils.

To place this matter into context, the Parish Council has long held the view that this strip of land, to the south western end of the field below the Gyde House and its grounds, would be an ideal location for several dwellings which would be especially attractive to young adults early in their careers and/or married or living with a partner - not least those whose parental home is in Painswick. Such properties could, if created and retained through a housing association, be 'within budget' for those whose earnings had yet to reach a level at which they might afford a larger property, either to buy or to rent; meanwhile they could be close enough to the parental home to receive support and encouragement as their careers and social independence progressed.

In the final section of the Parish Plan, 'Housing Matters', the considerable local support for there being a cluster of such starter homes was clearly set out, and it is fair to be reminded that that proposal came from the public and was subsequently endorsed by the Parish Council. The Plan states that the only exception to "further residential development in the period of the District Council's Local Plan" in Painswick made by the Parish Council was "seek the building of a limited number of dwellings for first time home buyers/tenants". This site had been identified as "desirable by the Blueprint Working Party" and it had been noted that "access to the site was preserved at the time the surgery was built".

The suitability of this particular site, one which appears likely to obtain 'exceptional development' consent outside the village envelope, as did the surgery, seems not to be in contention. Hence

the representations made to the Trustees to consider its release.

The Beacon understands that, in order to assist the Trustees in making an objective decision in the matter, taking into account market values and so on, the SDC's partner in providing affordable properties in the area, Fossway Housing Association, undertook to meet the cost of an independent appraisal of the situation for the Trustees. The appraisal report was before the Trustees recently, and it is their assessment of the report's content that is awaited by the Parish Council. The understanding of several members at the Council meeting was that the independent report contained a rationale and advice against the sale of the land for any purpose at this time. If this is confirmed it appears to follow that the Parish Council will need to seek an alternative site.

The Beacon understands that there will be some public concern that the Trustees cannot sell the land at this time. Although they are already holding a substantial capital investment as a product of their sale of Gyde House, they are reliant upon a supportive independent report before they can put a case to the Charity Commissioners; even though it will only be for a small further capital receipt. The situation frustrates the high expectations of the community. We will endeavour to follow up on this incomplete story, hopefully with good news!

Painswick - Gloucester Bus Route 3

At its meeting on 19th February the Parish Council received the following letter from Pat Webb, Rural Transport Planner of the County Council.

"I am writing to inform you that Stagecoach has given us notice on our Contract H 104. This is a bus we subsidise from Painswick to Gloucester at 07:21, and returns from Gloucester at 17:55. The last day Stagecoach will operate this service will be on Friday 28th March 2003.

Our survey figures for the morning journey show very low numbers, with no workers using the bus. There are five schoolchildren during school term times, and nobody at all in school holidays. The afternoon trip never has more than one passenger, and none at all in school holidays. The alternative route for these five school children would be to use Stagecoach Route 46 Painswick to Brockworth and change onto route 10 into Gloucester.

We do not propose to replace this service after 28th March 2003."

The Parish Council was dismayed to receive this news. While there was little debate on the subject, it was noted that it was open to members of the public to write to the County Council if they so wish. The Beacon notes that, while there may be little current use, the additional journey to include changes of bus for children - in all weather conditions - has to be of concern. We also note that the absence of such a service further lessens the attractiveness of living in this area without a car and that it adds to road congestion in the rush hour for those whose employment is or may be in Gloucester.



Silent vigil and prayer outside the Town Hall on Saturday 15th February, one of the nation-wide public expressions of concern for a non-combat outcome of the confrontation with Iraq.

Elsewhere this month, telephone **scams** to watch out for, opportunity for wireless **Broadband within a few months**, upbeat **music news**, **hand bells** in Cranham, **Ross on alphabets**, wanted - **bone marrow**, change of **Head at the Croft**, annual **subscription request**, some **care centre news**, "Oyez" for **mudrakers**, and a report from the **Dog Warden**.



PLANNING COMMITTEE

Amended Plans

Chairman Malcolm Watts drew attention to a seemingly anomalous situation in which the neighbours of properties in relation to which amended or revised plans are submitted after decision by the District Council are not automatically informed; this despite the fact that the Parish Council may itself be invited to comment. An instance was given of a two bedroom property which had been approved by SDC after consultation with the officers, who had indicated that they felt unable to recommend approval of a four bedroom development, and the developer had then sought a revision to four bedrooms - a substantial difference.

Mr. Watts reported that SDC administration in these matters was unlikely to change.

Painswick Court

The Chairman informed the committee of his having accepted invitations from Richard Free, Managing Director of Astley Towne Heritage, the developers of Painswick Court, and Mrs. Murray, to be briefed about the overall development and the constraints within which they were operating; this as a consequence of the discussion at the previous meeting of the committee reported in the February issue of the Beacon.

The committee were informed by Mr. Watts that any future applications for planning would, he was confident, be better understood as a result of his meeting.

PARISH COUNCIL

The Chairman, Terry Parker, informed Members at the start of the meeting of the recent deaths of Barry Edwards and

Bernard Owens, both of whom had served as Parish Councillors.

Police Authority

Craig Dunn was invited to address the Council about his role as one of the five independent Members of the 22 strong Gloucestershire Police Authority and made mention of his remit ranging across all policing matters. While he had not been appointed to represent Painswick in particular, he was aware of local concerns about policing and was happy to receive information which he might contribute towards the efforts of the constabulary to provide the most effective service.

Mr. Dunn told the Council that he was aware of their recent frustration regarding the decision of the Crown Prosecution service not to proceed with a seemingly straightforward case of illegal on-street parking, but pointed out that there were circumstances in which prosecution of the case might have been abortive.

Museum and Information Link

Mr. Parker reported having spoken with the Curator of Stroud Museum who was supportive of the suggestion of a small museum in Painswick (see p.5 of February Beacon) and had offered to meet with the Working Group, but had warned of much 'red tape' attached to having a museum as such. David Hudson pointed out that a facility which was a variant upon a museum might be the answer.

The Chairman looked forward to Messrs. Hudson and Watts convening the meeting.

Affordable Housing

Mr. Parker informed the Council that a letter which had been anticipated from the Gyde Trustees to inform the Council of their decision regarding use of part of their landholding below Painswick Surgery had not been received. Discussion was, therefore, limited. (See the front page article in this issue.)

Members' Allowances

The Council took note of draft regulations within which Parish Councillors might, from April 2003, be entitled to receive allowances to defray some of their personal expenses. If the regulations are enacted it would be for the District Council to decide

what each allowance should be.

Councillors expressed their concern that the introduction and/or acceptance of such allowances would remove the traditional voluntary service rendered by Parish Councillors. Whilst it was regarded as potentially helpful to prospective councillors whose financial circumstances were such that they would hesitate to put themselves forward for election, the consensus was that allowances at this tier of local government would be regrettable. No councillors supported the scheme but there was an awareness that the progressively increasing role and responsibility of Parish Councils and their members might make such allowances more acceptable.

Village link mini-bus service



The Council was informed that the bid for funding of a mini-bus service which would have enabled residents in outlying villages to connect with main bus routes, visit the surgery and local shops, and so on had not been successful. There was considerable disappointment at this outcome, this after considerable effort and collaboration between Stroud North Area parish councils and high expectations.

The situation was being reviewed and a report would be made at a future meeting.

Broadband Internet access

Tony Crook gave a verbal report upon the public meeting held on the previous evening at which details of a possible wireless Broadband link scheme had been expounded by Loop Scorpio Ltd. of Gloucester.

The Council was supportive of the concept, especially if it brought a reliable service into the village.



**SMITH
BROS.**

**GENERAL BUILDERS
AND DECORATORS**

- NATURAL STONEMWORK
- ROOFING - ALL TYPES
- NEW BUILD & EXTENSIONS
- ALL REPAIRS - MAINTENANCE WORKS
- ESTABLISHED 1956

2 Gloucester Street, Painswick,
Gloucestershire GL6 6QN
Telephone: Painswick (01452) 813051

Bookmark Computers
(of Stroud) Ltd

Buying Advice - Upgrades
Software and Hardware
Repairs - Tuition

01453 886131
Registered at Companies House
Company number 4180684

THE
PAINSWICK
HOTEL

Country House Hotel of the Year

Curl up in a comfy sofa and relax in front of the log fire and enjoy the relaxed atmosphere that is the Painswick Hotel.

Open for Breakfast, Morning Coffee, Lunch, Afternoon Tea and Dinner prepared by our award-winning chefs.

If you have a special event why not make use of our Private Dining Room which can seat up to 18 guests, and is at no additional charge

Lunch
Served from 12.30pm to 2.00pm
2 courses £14 and 3 courses £17

Traditional 4 course Sunday Lunch £19.50

Dinner
Served from 7.00pm to 9.30pm
2 courses £26 and 3 courses £29.50

KEMPS LANE, PAINSWICK
GLOUCESTERSHIRE GL6 6YB
Tel: (01452) 812160
Fax: (01452) 814059
www.painswickhotel.com
reservations@painswickhotel.com

Broadband - latest important news!

On last month's front page we reported that BT Broadband – the next 'big thing' in Internet telecommunications – still hasn't arrived in Painswick, but we thought we were "halfway there". Well, the information provided to us by BT seems to have been misleading. Our latest check (on the 19th February) tells us that, while 112 people have notified BT of an interest in Broadband, a decision as to how many are needed to 'trigger' BT to consider installing the necessary equipment in the local exchange has not been made.

Let us remind ourselves of two things; what is Broadband, and what role does BT have in bringing it to our homes and local businesses.

BT Broadband uses a standard telephone line to provide high-speed, 'always on', access to the Internet and enables those connected to download content at up to 10 times faster than now; about 512Kbps rather than 56bps. This enables easier access to video links, listening to or recording music and video, and much else. For those with businesses, and there are many operating from home in this area, the benefits are enormous. The sheer capacity of such communication links would not only benefit current business users but could prove the key criterion in attracting new small businesses to Painswick. Knock-on effects include greater awareness of the desirability of living in an environment such as ours, and, of course, an impact upon property prices as a consequence of ease of high capacity connection to the Internet. Some may be interested to note that connection is now possible in parts of a conurbation such as Gloucester, but by no means the whole of the City.

British Telecommunications have an active programme of making Broadband available across the country, but the necessary investment at each local exchange - BT spokesman **Jason Mann** told us between £¼m and £½m is not untypical - means that the approach is piecemeal and geared to commercial viability.

In order to decide Broadband pecking order, BT is tracking popular demand locality by locality according to those registering their interest either on-line or via a special phone number 0800.800060. As we have said, the current indicator is 112 - a substantial figure relative to our population. The next step is for BT to make known what the viability threshold is for Painswick, i.e. what is the level of interest needed before they even begin to consider when they might add the equipment to their local exchange. So, the BT 'trigger' point has yet to be erected for Painswick, and will not be, Jason told us, until about 200 have signalled their interest. So setting the date for that 'trigger' point is problematic, and where the magic figure of further interest will then need to be, between 200 and 550 of potential subscribers, is currently anybody's guess.

BT is not the only provider, and others are trying to rent their copper or aluminium wires to do a similar job. The experience to date is that such giants as TeleWest are floundering, in their case having run out of the investment cash they need.

Are you interested in another way - no wires?

Just after we went to press last month, and through the good offices of Tony Crook, we were approached by Peter Cartwright, MD of Loop Scorpio Ltd., a Gloucester based wireless broadband operator. Following a briefing, we helped arrange for an open meeting which was held in the Town Hall here on Tuesday last week. Although the meeting only had the slightest of publicity through a leaflet drop to a fraction of the village, and some ensuing rapid local Internet initiatives to put the word around in our community, there was a seriously interested group of people who turned out that evening - as many as did after a better publicity drive in Ledbury on 12th February this year.

To cut a complex story short, Ledbury will have town-wide access to Broadband at up to 100 times faster than using a modem by the time this issue of the Beacon reaches your doormat. How? The 'coverage' is achieved by Loop Scorpio utilising BT's network to bring a piece of the Internet to the centre of Ledbury, and then relaying connections through minute aerials around the town to form a Community Network; networking between subscribers in the community is included in the normal monthly tariff. Yes, that simple!

The technology is, of course, complicated, but is essentially that a radio link network of transmitters/receivers, with 400m intervals, 'cover' the village - interspersed with receivers as 'spurs' to serve subscribing properties. All the rooftop aerials are very small; one looks like a 40cm long vertical fluorescent tube, the other a 30cm long miniature television aerial. Not intrusive, not an eyesore. For the techies, the Internet connection will have an initial capacity of 2Mbs and an ability to stack a further 2Mbs if (when?) overwhelmed by the take-up. Local communications can reach 5Mbs. A typical service would be synchronous 1Mbs shared between 100 properties; 2Mbs thus meets the typical needs of 200 properties. Upgrading for heavy business users is available.

How much? About the same as the standard BT tariff, once the purchase of the necessary ADSL modem for the BT service is included. When? That is up to those who want it. Peter and Loop Scorpio are straining at the leash and could have Painswick up and running within about five months. What would make it happen? Serious expressions of interest to Loop Scorpio through peter@loopscorpio.net

Painswick Parish Council indicated its being supportive last week.

Village wide Broadband this summer?

**ELECTRICAL
AND
ALARM
SERVICES**

New Installations, Rewires, Extra Sockets,
Lights, Showers, Security Lighting,
Economy 7 Heating, etc.

Professional intruder alarm
systems fitted from £330.
Remote control car alarms
fitted from £70.

Door Entry and Closed
Circuit Television Systems fitted

For a friendly, prompt and
reliable service contact
Steve Gallagher
on 01453 791209

**ALL WORK FULLY GUARANTEED
WITH NO ADDED VAT**

PAINSWICK ELECTRICAL

N.I.C.E.I.C. approved CONTRACTORS

SERVICE
INSTALLATIONS
REPAIRS


*The Electrical
Contractors Association*

Mr M TURNER
01453 758342 and 01452 812659
Mobile: 07850 784899

Michael Davis
Building and Maintenance Contractor

Painswick 01452 812598
Mobile 07889 092279
e-mail: Mike@painswick4.fsnet.co.uk

ALL types of building work carried out.
Natural Stonework and Dry Stone
Walling a speciality

**Lived and worked locally for
over 30 years**

Member of the Guild of Master Craftsmen

Julian Slade follows nude diners!

As I mentioned last month, *Don't dress for dinner*, our flirtatiously full-frontal French farce (8th to 10th May), is now in production and I am the Assistant Director. Pause for effect... With such executive authority, I thought I might give Beacon readers a sneaky peek backstage so that you can see what really goes on.

Picture the scene. It is the first *Don't dress* read through and our cast of six, plus director Lesley Wolowiec, are all raring to go. Not that any of them are actually undressed, you understand. Perish the thought! This is, after all, only a read through and this is mid February... in the Painswick Centre. Thoughts are not the only things that would perish if realism were taken too far!

Lesley gives me my first executive task as Assistant Director. Carefully, I arrange seven chairs in a circle. Hardly have I finished when I am assigned a second and highly complex task, one – Lesley assures me – that is absolutely vital to the success of the entire production.

When I have finished making the coffee, I return to the circle of chairs to find that the read through has somehow started without me and that Lesley has underestimated the number of chairs needed if I am to sit down as well. It's a good job she has me as Assistant Director to check on these points of detail.

"Oh, yes... Pity about that," she says enigmatically, "Still, you might like to go and sort out the techies."

It certainly is a busy life, this Assistant Director caper! As I reach backstage, the technical team are doing those highly sophisticated technical things that differentiate Am Dram techies from the rest of Creation. One is determinedly pounding a wooden plank with a hammer. Another is trying out a new power drill: not actually drilling anything, you understand, just firing off short bursts into the air, like a cowboy shooting up the town in one of those old westerns. The third, the chief techie, stands in the classic techie pose: hands on hips, lips pursed, breath being sharply taken in, shaking his head sadly...

"We can't have noises like this during rehearsals!" he observes thoughtfully, "It's nowhere near loud enough: the actors can still hear themselves think! Let's try a few sound effects."

I decide to interrupt at this point and offer my assistance as Assistant Director, which is accepted.

"Three coffees. All with milk. No sugar." says the thoughtful one, setting off a couple of thunder flashes. "And you can bring the biscuit tin."

By the time I have finished sorting out the techies, the read-through is well and truly read through.

"How was it?" I enquire.

"Fine!" says Lesley

"How was I?" I continue, angling for a spot of praise.

"You were entirely adequate."

"It was nothing," I respond modestly.

"Quite."

I shall keep you informed as the plot thickens.

On to things historical and hysterical. As you are doubtless aware, this year marks not only the 750th anniversary of the Painswick Charter but also the 80th anniversary of Painswick Players being founded by the indomitable Lucy Hyett. To celebrate both, we are planning a 'Living Legends' evening for Friday 11th July. This will feature the return of Julian Slade (of *Salad Days* fame) and a number of other PP golden oldies (and not-so-oldies) performing choice excerpts from the last few decades. If you would like to play some part in this historic evening, particularly if you are a former Painswick Player or Country Player or PaDSie, please come along to an open meeting on Tuesday 11th March, 7.30 pm in the hall of the Painswick Centre.

Also part of the 750th Charter celebrations in July will be a display in the Town Hall of our 80 dramatic years in Painswick and my sincere thanks to all of you who responded to my appeal for PP memorabilia. One immediate spin-off has been to provide the core material for our new Painswick Players website: www.painswickplayers.org.uk. Take a spin into cyberspace and be amazed by tantalising glimpses of yesteryear, as well as a veritable feast of fascinating PP facts and features! As a taster, the accompanying photo shows Pauline Berry & Ivor Burton in Lucy Hyett's 1952 production of *Dear Brutus* by J M Barrie.

Jack Burgess Painswick Players



GODDARDS GARAGE

Cheltenham Road, Painswick



- * Brake Safety Centre
- * Full servicing & repair facilities
- * Pre-MOT checks/MOTs arranged
- * Ti Crypton engine tuning service
- * Petrol/Diesel/Tyres/Exhausts
- * Private Hire Taxi
- * Paraffin/Coal/Calor Gas/Charcoal

Tel 01452 812240

**THE MARCH HARE at
Cardynham House
The Cross, Painswick
Telephone 01452 814006**

**SUNDAY LUNCH (Traditional)
Afternoon Tea and Coffee**

Menu changes weekly, Vegetarian meals available. All food prepared on our premises.
Open 12-4PM Sundays
Telephone for bookings.

PRICE DAVIS

Chartered Accountants & Tax Advisers
The Old Baptist Chapel, New Street

**We provide a local, personal service
for every aspect of your
taxation and accountancy needs**

THE INSTITUTE OF
CHARTERED
ACCOUNTANTS

Telephone 812491
Facsimile 812431
Email info@pricedavis.co.uk



Wildlife rescued

The evening of 6th February was typically wintry, and not one to encourage people to leave the comfort of their homes. Surprisingly the Town Hall was fairly full and, I would guess that the number attending was probably one of the highest for a non-field event. Could it have been



Painswick Bird Club

that the speaker for the evening, Michael Barret of the Gloucestershire Wildlife Rescue Centre, had a reputation which has gone before him, and that this had brought some people from afar? I should not be surprised at that, for he gave us an evening of interest coupled with contagious humour.

Admittedly he did not stick to the subject of birds, but included a variety of animals varying in size from baby rabbits to an elephant! When he turned to birds he recounted a number of anecdotes from herons to owls and ducklings. His tale about the captured golden eagle which developed into a chicken brought the house down.

I should have mentioned that his introduction covered the fact that the Centre was wholly funded by the public, and I am sure this touched the hearts (and, hopefully, pockets) of a number in the audience. Long may they carry on their good work of bringing 60% of their patients back into healthy freedom.

Harold Wood

Care Centre

Keith Cockell, Managing Director of Richmond Village, Nantwich, Cheshire told the Beacon that design and engineering work continues apace on the Development of the Care Centre and Independent Apartments. Four contractors are vying for this prestigious job and it is expected that the final round of negotiations to select the preferred contractor will take place in the next few months.

Mr. Cockell also told the Beacon that his architect has met with Severn Trent Water to discuss the implementation of the surface water drainage system in conjunction with the St. Mary's site, although no decision has been made.

Richmond is adopting a new logo; it is in the form of a heraldic shield and is referring to the Broadham Fields Development as Richmond Painswick until such time as the outcome from a competition and local input to come up with a name.



C P R E

A big "Thank you" to all neighbours and friends for their support at the Campaign for the Protection of Rural England bring-and-buy sale on 15th February when a grand total of £110 was raised.

David and Angela Hudson

Half price art

Valerie Dugan and Paul Gray from the Shetland Shop are joining forces with artist Ian Shearman in holding an up-to-half-price art sale.

They will be selling original paintings, calligraphy and prints, both framed and un-framed, at half their original cost.

The exhibition and sale dates include Saturday and Sunday 1st and 2nd March from 10.00am until 4.30pm at the Town Hall.

Telephone trickery--- you have been warned

With thanks to Age Concern in Gloucestershire, and the Christ Church Newsletter, we are reproducing this article as we think you will agree that the information is deserving of the widest publicity.

The police have been informed of the following scams, one which is targeting females in particular.

The first one involves **burglary**.

People receive a phone call, seemingly from the Post Office, asking them to confirm their post code. When this information is given, they are thanked and told they are eligible for some gift vouchers for their co-operation, and then asked to provide their home address and post code in order that the vouchers can be sent. So far 90% of the women who have provided this information have been burgled, as it is assumed their homes are empty during office hours. The Post Office have confirmed that they are NOT carrying out any such survey and anyone who is contacted in this way should inform the police.

A second scam involves **telephone land-lines**.

If you receive a telephone call on your land-line from an individual who identifies him-herself as being an 'AT & T Service Technician', who is conducting a test on the line, or if anyone else asks you to do the following -DON'T. They will state that to complete the test the recipient should dial nine zero (90) then the hash key and then hang up. If you do this, they have access to your own personal line and any calls-long distance, chat lines and so on-will be charged to your account. The Police have suggested that many of these calls are emanating from local prisons!

The third scam involves **mobile phones**.

If you get a phone call on your mobile from any mobile phone provider's "company engineer" telling you they are doing a check on your phone and that you must press a combination of symbols and numbers DON'T. If this happens **end the call immediately without pressing** any numbers or symbols. A fraudulent company has a device which, once you have pressed the numbers and symbols, means they can access your SIM card and make calls from it at your expense.

LAWNMOWERS

SERVICE • REPAIR • SALES

- HONDA
- MOUNTFIELD
- QUALCAST
- STIHL
- HAYTER
- ATCO
- FLYMO
- WESTWOOD
- KUBOTA
- COUNTAX



FREE LOCAL COLLECTION & DELIVERY

CHELTENHAM MOWER SERVICES
MOBILE: 0831 282533
TEL: 01452 714098
www.users.globalnet.co.uk/~cmowers

Beautiful furniture, kitchens, cupboards, doors, windows, boats musical instruments

Tel. Edge 01452 814372

PAINSWICK PAPERS

Have your newspapers magazines and comics delivered to your door



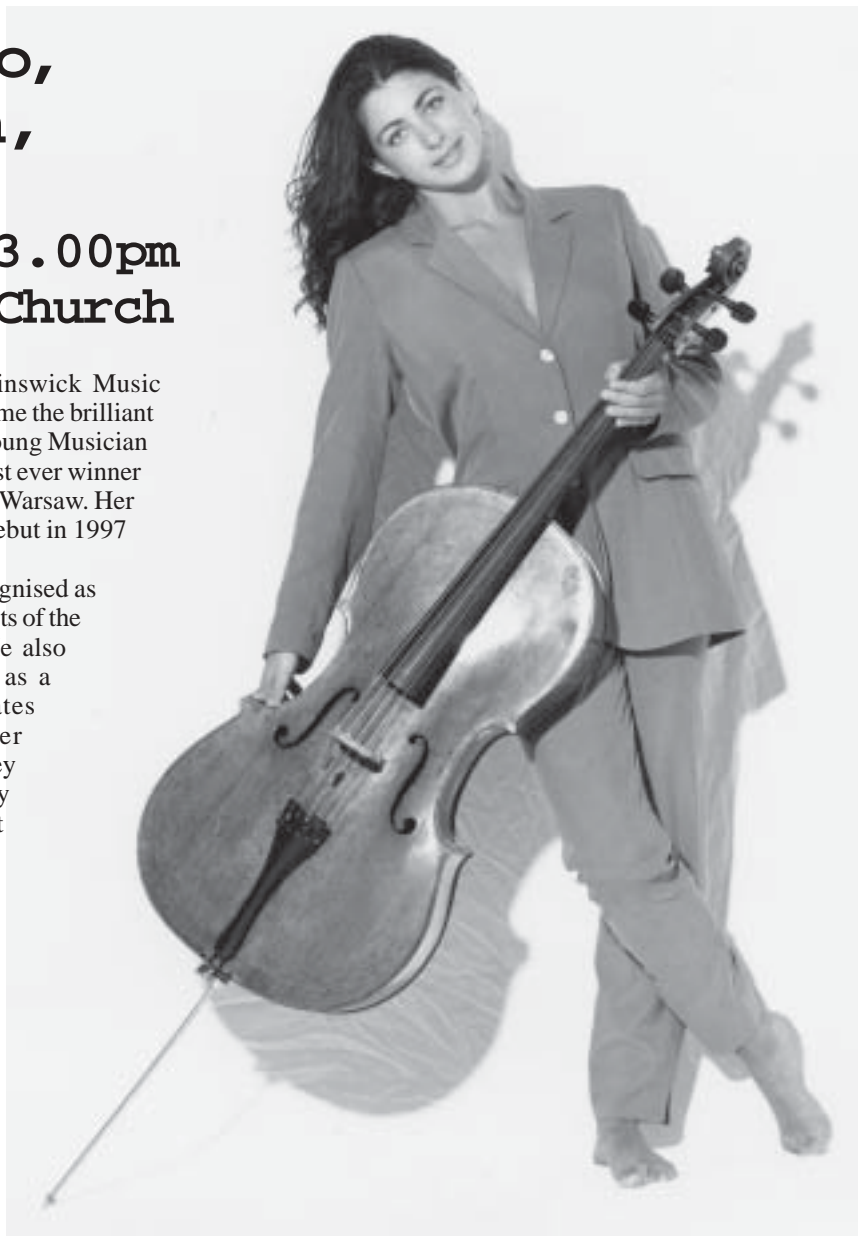
TEL. 814265

Natalie Clein, 'cello, with Charles Owen, piano

29 March at 3.00pm
in St Mary's Church

Another superb season of concerts arranged by Painswick Music Society opens this month and we are fortunate to welcome the brilliant young cellist, Natalie Clein. After winning the BBC Young Musician of the Year Competition in 1994, Natalie became the first ever winner of the Eurovision Competition for Young Musicians in Warsaw. Her career gained momentum following her BBC Proms debut in 1997 and now she is in great demand throughout the world.

Her distinguished accompanist, Charles Owen, is recognised as one of the leading pianists of the younger generation. He also performs world wide as a soloist and collaborates with many other outstanding artists. They will play works by Schumann, Schubert and Chopin.



A unique feature of the afternoon is the delicious tea served in the Church Rooms afterwards when there is an opportunity to meet the artists.

Membership for the whole season of four concerts - £25, - which offers great value for money - a saving of £15. Individual tickets at £10 can also be obtained for all four concerts. Young people are especially welcome - tickets for children and students are £1.

Tickets and further information from: Hywel James tel. 812419 or from the Shetland Shop

Naomi Dunn



**PAINSWICK
POST
OFFICE**

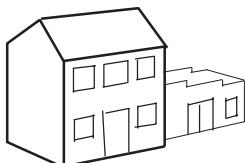
**MOTHERING SUNDAY
30th MARCH**

Take a look at our new selection of special gifts and cards for your Mum. Why not treat her to a box of chocolates as well?

*NEW IN...
TOP TRUMPS GAMES
"Collectable, Competitive,
Compulsive."*

PAINSWICK POST OFFICE 812303

Garages and All Building Maintenance
Natural Stonework a Speciality



Extensions

HORNE & KILMISTER Ltd

General Builders

For Free Estimates phone 01453 872329 812760

01453 872329 01452.814416

**Building Repairs
Painting & Decorating
Carpentry**

813866

'Chopin Revisited'

.....was the title of Richard Farbrother's third presentation to our group on 16th January, and he devoted his evening to the nocturnes. Chopin wrote some of the loveliest music in the piano repertoire in his 20 nocturnes, following in the path of the Irish pianist and composer John Field. (The nocturne is literally "eine kleine Nachtmusik", a little night-music, usually short and restful with a gentle ending). Illustrating on the piano music heard in earlier presentations, he first compared the emotional range of the preludes with that of the nocturnes to follow, and then showed how Chopin deepened the level of both studies and waltzes composed hitherto.

In the main part we heard many gorgeous nocturnes, some well known, others perhaps unjustly neglected, and were shown how Chopin built on, and greatly improved and enhanced Field's work. Op.9, Nos.1 and 3; 15 No.1; 27 No.; 32 No.1 and his last two nocturnes, Op.55 No.2 and 62 No.1 spanned the range - with Op.9 No.2, perhaps the most popular and most lyrical, concluding the evening. Super!

His symphonies are a very strong part of Tchaikovsky's output. They can be tremendously exciting and his gift for melody is always there. We were fortunate on 30th January to be treated by Geraldine Brown, a music teacher at Stroud High, to a very fluent and relaxed presentation of recordings of the six numbered symphonies. Although overshadowed by the later compositions, the first three symphonies are very attractive and melodic works. Tchaikovsky referred to the theme of No.4 as "Fate" and it is a brilliant work, composed at the height of his

powers. No.5 is of course very popular, a very Russian work, and the "Pathétique" sixth tremendously dramatic. A description of Tchaikovsky's very eventful and, finally, sad life with its many ups and downs, moved hand in hand with the recordings of selected movements of each symphony with the lecturer carefully pointing out what we might look for in each. We left feeling both moved and educated!

Ralph Kenber

Music Appreciation Group

and Bournemouth Symphony Orchestra

Our second concert outing of the season took us to Cheltenham's Town Hall on Friday 14th February to hear the Bournemouth Symphony Orchestra with guest conductor Tadaaki Otaka.

The evening's programme started with Honegger's tone-poem 'Pastorale d'été'. The orchestra's playing reflected the limpid charms of this less familiar 1920's composition. Next, we heard soloist Paul Lewis play Beethoven's Piano Concerto No.4 in G Major. His playing of this lovely concerto was exquisite, underlining his fast-rising reputation. After the interval, the orchestra played Dvorák's Symphony No.9 in E Minor 'From The New World'. The contribution of the orchestra's woodwind section was particularly noteworthy in a perfect rendering of this popular work.

So, this group of Painswick music-lovers had a very enjoyable St. Valentine's evening.

Jane Rowe

Recital in aid of GEAR

Caroline McBrayne the Pianist who was coming on Sunday 16th March, as reported in the Beacon, has now changed the date to Sunday 23rd March at 3.00pm at 1 Hambutts Mead.

Sorry for the inconvenience.

Diana Feilden



Celebratory Voices

Preparations for the Service of Celebration to mark the anniversary of Painswick receiving its Market Charter are well in hand and many singers have come forward.

We would like to involve as many local singers as possible, so if you enjoy singing this is a reminder to come along to our first meeting on Wednesday 12th March at 7.30pm in Painswick Church to find out what its all about and the rousing hymns we will be singing. The Service of Celebration will be held on Tuesday 8 April at 7.30pm in Painswick Church.

Contact Graham Luker on 812385 if you would like more information.

Graham Luker



The Saint Cecilia Singers

A performance of the Rachmaninov Vespers and Howells Requiem, under the direction of Benjamin Nicholas, will be given in Gloucester Cathedral on Saturday 29th March at 8.00pm.

TREE SURGERY
Environmentally Sensitive

Sapling to Veteran Tree Care
Fruit Tree Pruning & Conservation
All Tree Work Undertaken

Skilled Professional Service: Fully Insured:
Ecological Standards: F.C.A. member

Landcare Services
6 Pullens Rd, Painswick
Call John Rhodes & Clare Overhill
812709

CLOCK & WATCH REPAIRS

01452 812762

J. D. HOBBS
B.A. Hons. F.N.D., Grad. B.H.I.

A Graduate of the British Horological Institute.

CENTRELINE

SPECIALIST STONEMASONS & STONE CARVERS

CONSERVATION SPECIALISTS
QUALITY CRAFTSMANSHIP
EXPERT ADVICE

OFFICE: 01452 813892
WORKSHOP: 01285 821074

FAIRFAX HOUSE • VICARAGE STREET
PAINSWICK • GLOS • GL6 6XS



Headship change at the Croft School

Janet Hoyle, pictured here, has been appointed acting head teacher following the surprise departure of Roger Harding last month to take up education consultancy work.

Chairman of The Croft School Governors, Mrs Margaret Hodge, told the Beacon that the governors warmly welcomed Janet's appointment which would continue until September when a permanent head would be appointed.

Mrs Hoyle told the Beacon that she had recently moved to Gloucester from London where she had been head teacher of a primary school in Enfield for nearly four years.

She said that she was delighted by the beautiful location and space as she had been used to a very cramped site and views of the gas works! Mrs Hoyle said that she had been made to feel extremely welcome by the staff, pupils and governors of the school. "There is a very positive atmosphere here and I am looking forward to working in this place for the next few months".

She said that the school was very well supported by the local community with several volunteers coming to help in the school in a variety of ways, either regularly or occasionally. She asked that "if readers feel they have a skill to offer the school, or just a



little of their time to help make resources or mend library books, please get in touch".

Mrs Hoyle concluded, "I look forward to getting to know you and this community. Look out for some articles from our pupils in the next issue!"

Could you be a Bone Marrow donor?

The National Blood Service needs more Bone Marrow donors. Please read on and, if you would like to help please, call 0117 9912007 for a more detailed leaflet. If you think there are others who might be interested, please 'put the word about'.

WHAT IS BONE MARROW?

Bone marrow is the place where stem cells, which are the "building blocks", can grow into any of the other normal blood cells; such as red cells, which carry oxygen; white cells, which fight infection; platelets, which stop bleeding.

WHY ARE BONE MARROW DONORS NEEDED?

There are a number of diseases, which prevent a patient's bone marrow from working properly. These include leukaemia, aplastic anaemia, as well as other diseases of the immune system.

Although chemotherapy will successfully treat some of these patients, for many the only possibility of a cure is to have a bone marrow transplant from a healthy donor. In about 30% of cases, a matched donor can be found from within the patient's family, such as a brother or sister.

The other 70% of patients have to rely on a matched volunteer donor, identified through The British Bone Marrow Registry. The Registry needs to recruit many more people for the register, because of the difficulty they have in finding a suitable match whenever a bone marrow transplant is needed.

WHAT IS THE BBMR?

The British Bone Marrow Registry (BBMR) is a division of the National Blood Service, working in co-operation with the other UK bone marrow/blood donor registries. The BBMR is responsible for recruiting, testing and registering blood donors who volunteer to become bone marrow donors. It is also part of an international network, performing searches around the world to find suitable bone marrow donors.

HOW CAN I JOIN THE REGISTER?

You must be aged between 18 and 44 years old (registered before your 45th birthday) and a blood donor. You can join when you next give blood, or even at the same time as your first donation. There is a check that there are no medical reasons preventing you from being both a blood donor and a bone marrow donor. At the time of your blood donation they will take an extra blood sample, so that they can identify your tissue type for the register. Please inform the staff at the blood donation session that you wish to join the BBMR before your blood donation is taken.

You can visit us at www.blood.co.uk, or on BBC2, Ceefax page 465. Or you may care to call 08457.711711

Thanks for your help!

Information provided by The National Blood Service

**Do something amazing today -
Give Blood.**

**COUNTRY LIFE
HOME IMPROVEMENT**

Quality, tailor made:

- Conservatories
- Fitted Kitchens
- Loft Conversions
- Replacement Windows and doors

• All enquiries dealt with personally by the proprietor who has 20 years experience as a quantity surveyor and construction manager.

• All products and workmanship are of the highest standard and carry a 10 year guarantee.

**For free advice or a quotation
Telephone (01452) 813755**

PRIVATE HIRE TAXI

ALLAN & MARTIN WEAGER
(Formerly Rylands)

01453-763947 (Allan)
01453-764845 (Martin)
Allan (mobile): 07712-776470
Martin (mobile): 07808 722255

G J HOGG
PAINTER AND DECORATOR

Interior and Exterior Painting
Wallpapering, Glazed Tiling

Estimates Free

8 Upper Washwell
Painswick
Glos. GL6 6QY

Telephone
PAINSWICK 812505

April holds some special treats for the Senior Circle that are not to be missed.

At our Friday 14th March meeting at 2.30pm Hugh Ross will be talking to us on the subject 'Alphabets of the World'. We are all so accustomed to writing that we do not realise how clever we are. It took mankind a long time to work out how to write (and some of us are not too good at it still!). At the meeting Hugh Ross will tell us about the many different ways of writing that have evolved. Some are much more complicated than ours; some others are more beautiful (and who has not wondered how those weird squiggles came about!). Hugh Ross had to develop his expertise in this subject to permit the world's major languages to be written with computers. Now that should have us 'spellbound'!

On Friday 28th March, again at 2.30pm, David Wynne-Morgan's subject will be 'Perceptions of Royalty', when he will be drawing on his experiences during the years he was court correspondent of the Daily Mail and the Daily Express. These stretch across the Diana years, the controversial issues that beset the Royal Family and the consequences for Prince Charles and the British constitution. Over the years the relationship between the media and the Royals has undergone considerable change, some of which we may regret though others perhaps welcomed. David Wynne-Morgan has both reported these and contributed to a number of TV documentary programmes and discussions about the Monarchy and about the way the media has treated the Royals. Whilst he will be looking back over those years of change and commenting on the consequences, he will also look to the future in these same respects and the possible consequences that lie ahead for the future of the Monarchy. This is going to provide fascinating insights into what goes on behind the scenes and how developments are likely to affect us all.

Painswick Senior Circle

Maurice Maggs

Historic Gardens

In the county of Gloucestershire are many beautiful and interesting gardens. The history of some of these gardens was the subject of the talk given by Sue Illman to the Painswick Local History Society in February. Ms Illman is a landscape architect and a founder member of the Gloucestershire Gardens and Landscape Trust, a charity which works to save and preserve historical gardens in the county. The gardens described by Ms Illman ranged from the large and famous Cirencester Park to the lesser-known Hardwick Court. Some of the gardens illustrated the changing fashions in garden design, where the formal layout popular in the 17th century was altered to make the more natural parkland introduced in the 18th century. Sometimes traces of the old layouts can still be seen in the gardens; where they have been completely obliterated, the old estate maps and early Ordnance Survey maps are excellent sources of information for the garden historian. During the time of the Arts and Crafts movement the 'cottage garden' style became popular; a fine example of this style can be seen at Rodmarton Manor.

The speaker provided new information on well-known gardens and made her audience aware of some of the other interesting gardens in the county.

The meeting of the Society in March will be a members' evening when those who lived in Painswick during the Second World War will recount their experiences and bring mementoes of those years. The meeting will be held in the Croft School on Tuesday, 18th March, at 7.30pm.

Gwen Welch



Eye examinations at home - for the housebound
Specialised service - free (NHS) for those over 60, including Glaucoma screening and full sight test
 Tel. 01453 833272 or 07967 743676 (mobile)
 Graham O'Regan BSc FSMC

Subscription invitation

The Beacon committee would like to thank all who support us, subscribers and advertisers, our team of distributors, and all who take the time and trouble to send in articles for publication. The number of subscribers reached 655 this last year, an all-time record which gave us much pleasure.

It is with the March issue that we invite readers to subscribe. We hope, of course, that you find your monthly newspaper, delivered free of charge to all households in Painswick, and to subscribers beyond the village itself, of real value. Enclosed with this copy is a pre-addressed envelope and a slip to enter your subscription. If you care to post this or leave at the desk in the Post Office, we will be most obliged. For those requesting or continuing postal delivery of the Beacon there are fixed charges to defray our costs, but in all other instances the amount you decide to subscribe is entirely at your discretion. Some ask us for an indication of what might be contributed and, to be helpful, we can point out that each copy costs an average of 40p to print; we leave the mathematics to you!

We post complimentary copies to any in residential care, so please keep us informed of instances known to you in case our coverage is incomplete.

For newcomers to the village we point out that The Painswick Beacon is an independent community newspaper, produced on a voluntary non-profit making basis, with the main aim of bringing news of local activities to the attention of all Painswick residents.

LANDSCAPE GARDENING

A Complete Garden Service

*Regular Garden Maintenance
 Grass Cutting, Hedge Trimming*

Construction of:-
*Ponds and Water Gardens
 Drystone Walling, Paving
 Fencing, Turfing, Seeding
 All Aspects of Tree Surgery*

FULLY INSURED
 Ask for Adrian Harris

Floribunda

01452 527647



Members Federation of Master Decorators

PAINTERS AND DECORATORS

established in 1970

A family business specialising in quality decorating

Wentworth, Cowle Road, Stroud, Glos
 01453 765502
 24-hour mobile 07860 704044

You, and Your village

I am always surprised when people apparently have little or no background knowledge of the place they live in. Towns and villages are rather like human beings inasmuch as they are all completely different from one another and this can be attributed to a multitude of factors most of which are historical. Of course, it can be argued that the present immediately becomes part of history, so these differences continue to grow and each town and village constantly develops its own unique and organic characteristics. How, then, is it possible to live in a place and remain unaware of what made it the way it is? Or is it me? Am I just quirky?

Living in Painswick is a case in point. Here is a village (some say town) which is full of character and heaving with history. True, it boasts no earth-shattering episode or major deed or very famous person. It does, however, have its very own fascinating and certainly significant story, the consequences of which are omnipresent today.

Painswick's history is crammed with personalities, some of whom made their mark on the wider society, while others are remembered or known of only locally but with great feeling nonetheless. Walk along any street in Painswick and its history is accompanying you very conspicuously. Quintessentially a wool town, its economy flourished in the 18th century because of the very fine quality of its cloth, and the many beautiful houses juxtaposed with the cloth workers' cottages are testimony to that successful period. It is, of course, very much an agricultural area too, and it has its artistic, commercial, religious, educational, medical and social history alongside. Quite apart from the obvious physical manifestations which confront you everywhere in Painswick, there are the less obvious but all pervasive aspects of history which give a place and its inhabitants a feeling, a special character. What is it here that has affected people's lives and thinking down the ages and continues to do so? What is it that has promoted a strong sense of community and pride and a desire to perpetuate the same feeling? In order to understand and be part of that community, surely we need to have a sense of how it came to be.

With such a richness of history it is surprising how many Painswickians, both newcomers and those of long standing, appear to be less well-informed than they might. Tracking down the details, apart from anecdotally, is an arduous business, of course. Fear not. Much searching out has already been done for you. There are now six issues of the Painswick Chronicle and these contain a wealth of information, much of it meticulously researched and verified, about Painswick's past. Many people are, it would seem, unaware of the existence of the Chronicle, but if you would like to develop a greater understanding of and feeling for this village, the Chronicles to date are a good place to start. They include articles on the following topics: Vol.1, the Hyetts and Dickinsons; the name of Painswick;

Painswick's postal history; the Friends meeting house and Dell burial ground; Queen Victoria's Diamond Jubilee; Gyde House. Vol.2, Painswick's roads; Mary Roberts; the Burne-Jones window; the commemorative stamp; Paradise; the Bethell family; Mary's Acre. Vol.3, W.H. Hyett; Painswick fifty years ago; the milestone project; the bells of St Mary's; Saxon Painswick; the Twining family; history of medical practice in Painswick. Vol.4, the churchyard tombs; Painswick Beacon 1945; Roman coins at Highfold Farm; fifty years ago; Horne's Garage; Charles Baker and Painswick; Painswick Post Office in 1960; Sir William Kingston, Lord of the Manor; Saxon Painswick – a reply. Vol.5, Gerald Finzi; history of education and schools in Painswick; the mud-rakers; the ladies of Ebworth; fifty years ago; a possible medieval boundary wall; the Pallings; top cuisine; Painswick directory entry 1820; boyhood memories 1930s and 1940s. Vol.6, Painswick's wool industry; childhood recollections spanning 100 years;; Thomas Claridge; the Royal Charter 1253; the Gloucester Cattle of Painswick; Cud Hill; child emigration from Painswick to Canada; a bridle boss at the Park; Painswick entry from an 1832 topographical dictionary; seeking Phyllis Barron.

All issues contain summaries of all presentations given to the Local History Society and they contain brief, often amusing, historical jottings about Painswick.

If you live in Painswick, why not enrich your knowledge and understanding of its development and population? The Chronicles are on sale in local shops and from the History Society. They are published annually. And just as importantly, if you are knowledgeable about a feature of Painswick's past or if you have memories of any part of Painswick life, why not record them for the Chronicle (or have someone write them for you)? Your knowledge and recollections are a valuable part of Painswick's history and remember, you are part of its future history.

Carol Maxwell



The extract from the *Gloucester Journal* of 2nd March 1901 explains all.



The Falcon Inn

Our STABLES ROOMS are available both daytime and evenings, complete with their own bar, for your private receptions and parties of up to 60 persons.

Our en-suite bedrooms have every modern facility and are ideal if you have friends or relatives coming to visit you in the PAINSWICK area.

Superb LUNCHES and DINNERS in our restaurant every day. Bar snacks, morning coffee.

Call FIONA or JON on 01452-814222 for more details

JOHN BARNES CARPET & UPHOLSTERY CLEANING SPECIALIST

Competitive Prices
Three Piece Suites
Spot & Stain Removal
Free Quotations
Fully Insured

01452.830562/332185

an occasion to note

Don't forget to come along to the Function Room at the Beacon on Saturday, 15th March, any time from 10.30am to 5.00pm. The occasion? A wonderful opportunity to re-visit Painswick, Painswick School and Gyde Home in the 1940's and 1950's

There will be an extensive display of photographs from the period and people on hand to meet and talk to about Painswick during and after World War II.

Everyone is welcome. If you were a pupil or member of Painswick School or a Gyde Home resident or lived in the village at the time this will be a day for meeting up with old friends and colleagues. And if you were none of these but are interested in that piece of Painswick's past, this is truly an opportunity not to be missed. It promises to be a grand reunion and a day of fascinating collections.

If you would like further information or if there is someone you would like to meet up with, contact Brian Jubb (tel. 0117 9616145, email b.jubb@virgin.net), or Judy Mills Mansell (tel. 01453 872500), or Sandra Tuckal nee Mansell (tel. 01453 886846). Alternatively, telephone Carol Maxwell (813387) or leave a message in the Beacon post box in New Street.

This is an occasion well worth looking into. You will be very welcome – do come along.

Bob and Marg Shea

The expression "If you want a job done, give it to a busy man" might have been coined for Bob Shea. His immense enthusiasm, energy and endless enthusiasm for helping others has made him one of the most active, supportive and best-known people in Painswick.

Bob has a natural, inquisitive charm and a burning desire to be involved. His Canadian friendship was always there - unconditional and all-embracing - either during a chat on the doorstep or a chance meeting in the Rec., ("don't forget your pooper-scooper"), outside Church on Sunday, over a coffee in his kitchen or in a meeting of one of the village organisations.

Bob and Marg lived in Painswick for 7½ years but their influence and thoughtfulness that touched so many will live far longer. They ran Meals-on-Wheels and led the organisation of the Millennium Village Photograph. Marg was active in WI, Austerity lunches, Mothers' Union and was a keen participant at Yoga and Puffins. She played bridge enthusiastically. Bob is a skilled – if rusty – pianist and he and Marg actively enjoyed the Music Appreciation Society. Both were committed members of St.Mary's and Bob was a genius at helping the Benefice Office with their computer problems. He also helped editing the Church newsletter. Their hospitality is boundless from their always-open front door, to Bob's "chicken-in-a-pot".

Their faith is strong and central to everything they do. Bob attended Synod, at diocesan and deanery level. Their capacity for warm friendship was celebrated in August last year when their daughter Christine married Andy in St. Mary's and a wonderful reception was held at The Verlands.

They have been closely involved in the work of The Family Haven in Gloucester - a Day Centre for families in crisis. Marg was a much respected Nursery Volunteer and Bob was the Secretary and a Trustee and a driving force for change and improvement.

Amongst his greatest achievements were the memorable fund-raising French Evening at the Café Rouge, the Gloucester Cathedral Service with H.R.H. The Princess Royal to celebrate The International Year of The Volunteer, and the vital Report from Birmingham University into the work of the charity for its future.

It was typical of Bob that he was as relaxed, helpful and constructive when chatting with struggling Mums or Health Visitors as he was when meeting Royalty.

However busy, Bob still had time to offer the Post lady a coffee every morning and to extend a helping hand to anyone in trouble. How did he manage it? Then one thinks of Marg and her calm, patient wisdom and one understands. Behind every great man is a great lady.

Bob's quick wits and insatiable appetite for new initiatives meant that he was always searching for fresh challenges. And so to France - let's hope that sleepy French village realises what's about to hit them! How we shall all miss them. We hope it's au revoir, not adieu.

Contributed by friends

Granny's attic

Another household sale at the Fiery Beacon on March 9th 11.00 until 3.00pm. Multitudinous 'treasures' from various Painswick attics to include designer clothes and jewellery, small furniture, domestic glass and crockery together with a few garden pots, some children's toys, curtains and rugs.

Do come!

THE PAINSWICK PHARMACY

NEW STREET. Tel. PAINSWICK (01452) 812263



OPENING TIMES

MONDAY TO FRIDAY

9.00 - 1.00 AND 2.00 - 6.00

SATURDAY

9.00 - 1.00

Tennis

A quiz night organised by the Painswick Tennis Club is being held on Friday 28th March at 7.15 pm at the Painswick Rugby and Sports Club.

Tickets are £8 each (to include hot supper) available from Gill Willoughby tel. 01452.720052 or Ruth Smith tel. 813693.

All welcome, either in teams of 6 or we will place individuals into teams.

Congratulations to the girls U-15 team who won their division last season. The squad consisted of Lucy Moir, Annabell Sidwell, Rosie Barber and Sarah and Judith Thomas. This was a particularly impressive achievement, given that the girls were the youngest in their division and were playing together as a team for the first time.

It has been said before but is worth saying again – things look very promising for the future of Painswick Junior Tennis. For information about coaching for juniors, please contact Nigel Barnett on 813941.



Left to right - Sarah Thomas, Annabell Sidwell, Lucy Moir, with John Courts, President of Painswick LTC.

Rugby

It's been an unsatisfactory month for Painswick, not least because the first fifteen has not played since the match against Drybrook on 8th February. The matches planned for Saturday 15th and 22nd February could not be played because of the opponents' cup commitments. The frustration with the absence of activity on the field has been greater than usual because the players are aware that they will need to be in good form when they play their final four league matches of the season. Defeats against Longlevens and Drybrook mean that Painswick must win one of the remaining matches to be reasonably sure of retaining their Premier Division league status and two for their position to be assured. The game against Longlevens was particularly disappointing as had the Cherry and Whites been successful with just two of their several penalty attempts the final score of 12 points to 8 would have been overturned. Painswick United have also had a quiet month with no fixtures on the 1st or 8th of February. However on 15th February they had a convincing victory over Old Centralians at the Gloucester club's ground and then on the following Saturday defeated old rivals Cainscross by 63 points to 7. Painswick's third fifteen, the Adders, playing in the Bill Adams Cup, lost to Dursley at Broadham. The first fifteen's next match is away against Chosen Hill.

Results [(L) indicates league match]

Sat 1 Feb. (L) Longlevens 1st XV 12 Painswick 1st XV 8

Sat 8 Feb. (L) Painswick 1st XV 16 Drybrook 1st XV 32

Sat 15 Feb. Old Centralians 2nd XV 7 Painswick United 21

Sat 22 Feb. Painswick United 63 Cainscross 2nd XV 63

Bill Adams Cup. Painswick Adders 7 Dursley 3rd XV 42

Hockey

Painswick Ladies had a convincing victory over Stroud Ladies 2nd XI when they defeated the neighbouring side at the Leisure Centre by 5 goals to nil. Stroud were unable to field a full side and this gave Painswick an immediate advantage. Goals from Sophie Hinds gave Painswick a two goal lead at half-time with Maggie Morse, Leah Foster and Becca Morse each scoring in the second period. Player of the match was Leah Foster. On the preceding Saturday, Painswick travelled to Newent when, because of traffic congestion, the team had little time to warm up. This left Painswick looking uncomfortable and playing defensively during the first ten minutes. Newent scored twice in the first half but Painswick levelled the score after the break through goals by Leah Foster and Sophie Hinds. In an untidy and fragmented conclusion, Newent scored two further goals to win the match by 4 goals to 2. Player of the match was Leah Foster.

PAINSWICK OSTEOPATHS

Paul Stamp DO
Helen Froggatt DO



PPP Registered Osteopath

Painswick Doctors' Practice

01452 301748

Parking and evening appointments available



RESTHAVEN

Resthaven, Pitchcombe, Nr Stroud,
Gloucestershire GL6 6LS.

Telephone: Painswick (01452) 812682

RESIDENTIAL/NURSING HOME
SHORT & LONG TERM &
RESPIRE CARE
SINGLE ROOMS
PRIVATE CHAPEL
BEAUTIFUL SETTING OVERLOOKING
THE PAINSWICK VALLEY

Resthaven Home of Healing Ltd
Regd. Charity No. 235354

Open Sunday Lunchtimes and Evenings

Daily 'Hot Specials' in addition
to our new menu
Omelettes - House Speciality
Home-made cakes and biscuits
Function Room available for hire

Chancellors Tea Rooms
Victoria Street, Painswick GL6 6QA
01452 812451

Falcon Bowling

The MidGlos inter-club league match on 26th January saw the Falcon Bowling Club's regular team back to near full strength to take on the Pineholt club. The rink skipped by Brian Eley came up against a very canny skip who used the running wood to good effect, and destroyed all the good work of the lead bowlers. This rink lost by 5 shots but the second rink, skipped by Graham Walters, won by a margin of 27 shots thus allowing us to win the match and take 4 of the 6 available points.

Sunday 2nd February saw us still without two of our regular players and up against the league leaders Coleford. Brian Eley's rink managed a win, but in spite of leading by 12 shots at one point the rink skipped by myself ran out of steam and could only manage a draw. Nevertheless five valuable points which we did not expect to get and Falcon temporarily LEAGUE LEADERS, but we have played one more match than Barnwood who are in second place.

Our ladies played in the Cotswold Interclub two rink knockout on 4th February and took on a strong ladies side from Nailsworth. They won the match by 2 shots and go forward to the semi-final on 20th March. They are to be congratulated on the win especially as the game was played on what to the majority of players was an "away game" the running surface being totally different to that experienced at MidGlos.

On 8th February they played again in the MidGlos Interclub knockout against Moreton in Marsh and had a convincing win by 41 shots to 10. Revenge for being put out of the competition by them last year.

Sunday 9th February saw us quite stretched as we had to put our 6 rinks - 4 at Cotswold Indoor against R.H.P. in the Arthur Duffett Cup, a mixed knockout game which we came from behind to win well and go forward to the semi final, and 2 rinks in the MidGlos Inter-club league against the yet to be defeated Barnwood club. Brian Eley's rink was ahead until the last end when they dropped shots and lost by 2, but the Graham Walters rink won by 11 shots, giving Falcon the game and a valuable 4 points to put us top of the league on merit. The final game in the preliminary rounds between Barnwood and Coleford was played on 16th February and resulted in a win by Coleford, but as they only secured 4 of the available 6 points Falcon remain top in Group B, and go forward to the play offs in March.

The Valentines night whist drive saw a reduction of 2 tables in this popular event, perhaps down to our more romantic members taking their spouses elsewhere. Again a successful evening with Sheila Walters providing the food and prizes, and Alan Brown keeping us all in order.

David Ryland

Grassland + diversity

The winter meeting of the Painswick Beacon Conservation Group, was held in the Town Hall on Thursday 20th February. The guest speaker was Jenny Phelps who spoke to a well attended meeting about the restoration of the natural herb rich limestone grassland of the Cotswolds. Jenny has recently been appointed as the Grassland Officer for the Cotswolds AONB Partnership.

Jenny spent some time explaining how the Partnership operated and the new powers it had received in the recent Countryside and Rights Of Way Act. DEFRA the government department which looks after countryside matters wants AONB's to be the lead organisations to integrate wildlife and farming. She then continued explaining why the natural limestone grassland was such an important part of the Cotswolds AONB's policy. The grassland once covered fifteen percent of the Cotswolds and has now been reduced to 1.3 % of the land area. It is mostly contained within the Cotswold Commons and on land which cannot be cultivated. The grassland contains one of the richest diversities of plants insects and other wildlife that occur in this country. The Commons have become a last refuge for many endangered species of wildlife. As a result one of the principle aims of the Cotswolds AONB is to restore the Commons which, through years of neglect, are gradually returning to woodland. The decline is due to many factors including labour for livestock control, increased traffic on roads and an embargo by English Nature on the annual burning of dead grasses on a three year rotation which was the traditional practice.

Jenny then went on to describe how the Cotswolds AONB had been given £150,000 in November last year to start a restoration programme. She outlined the procedures which were used to select 20 Commons to receive awards this year.

Among those selected were, Painswick Beacon, Edge Common, Bull's Cross, Juniper Hill and Hudinknoll. The restoration ranges from scrub clearing on Juniper Hill, tree and scrub clearing at selected sites on Painswick Beacon, fencing on Edge common and general clearing on the other Commons. Besides this work, the awards included funding for grass cutting machinery and hand tools for the maintenance of cleared areas. We were encouraged to think of protecting our special grassland in the same way that we regarded tropical rain forest and other world sites. Finally, we were promised more funds, provided that the present work achieved the desired results.

Cedric Nielsen

Cotswolds AONB

The nearly 800 square miles of the Cotswold AONB, most of which lies within Gloucestershire, is to be managed by a unified Board from April 2004.

Second only to the Lake District National Park in England and Wales, those closest to the intended changes are optimistic that this upgrading of the management of the AONB will in turn attract additional resources and tourists from all parts of the world.



Les Robinson B.D.S.
Private, Denplan



Appointments available 6 days a week and late evening Thursday

* Cosmetic Dentistry * Hygienist
* Personal Professional Service in Relaxed Atmosphere

TEL: 01452 814427

Hoyland House, Gyde Road, Painswick, Glos.
GL6 6RD

Paul A. Morris

City & Guilds

General Builder * Plastering * Patios
Dry Stone Walling
Natural Stone Work A Speciality
Hard Landscaping
Windows, Doors & Conservatories

19 Wickridge Close, Uplands,
Stroud, Glos GL5 1ST
Telephone (01453) 752004
Mobile 0781 8087375
Email: paulmorris72@Hotmail.com

FREE ESTIMATES

THE GARDEN PLAN

Landscaping Patios Fencing
Trees Borders General Maintenance

Established over 7-years

FREE ESTIMATES

Stuart Colley

01452 814379

07932 972675 (mobile)

PAINSWICK

GardenPlan133409@aol.com

For those who know their way around southern England

This month we have hidden the names of just twelve major towns in the south of England, none further north than Nottingham. Yes, Gloucester IS among them.

Can you find them?

They all run along a straight line, in any direction; but some might be backwards.

No prizes - just a bit of fun.

Answers next month.



Beaky

Answers to last month's WordSearch.

TIBBIWELL
EDGE
CHELTENHAM
PULLENS
NEW
KINGSMILL
FRIDAY
KEMPS
VICTORIA
HALE
STAMAGES
BEACON
HOLLYHOCK
CROFT
KEMPS
GYDE
QUEENSMEAD
STROUD

DOG WARDEN REPORT

Having carried items about dogs in recent issues, with some strong views also expressed, we asked the Dog Warden if she could provide information about the extent of complaints she had received.



We thought that this might put the views expressed into some sort of perspective.

The following information covers the period 1st July last until 31st January this year across all four of our villages:

Barking Dogs (noise pollution)	1
Lost dogs	4
Stray dogs	2
Fouling	5
Animal welfare enquiry	1

Readers are reminded that the Dog Warden telephone number is **01453 754497**

PROPERTY REPORT at 19th February from Murrays

It's amazing how a few days of sunshine, the sight of snowdrops and daffodils and a little more daylight each day puts a spring back in one's step and sets one's mind thinking of new ventures and moves. Once again we are experiencing that seasonal surge of interest from both buyers and sellers and even with all those threats and worries looming out there, investment in our homes still remains uppermost on our list of priorities.

Since moving my desk to Painswick at the end of last year, I have been amazed how busy this office has become. Jenny helped by Hilary and Anne, together with the team from Stroud and

Minchinhampton offices, have really built a successful office here and judging by the new business coming through the door, we seem to be going from strength to strength and I hope that my being here full time will help to provide added value to our service.

Since our last report, activity has been strong for so early in the year with sales on Sunnycroft in Hollyhock Lane, Portlett Cottage by the church, the flat in Yew Tree House, Spring Acre at Edge and Field Cottage and Applecroft at Pitchcombe. New instructions have been buoyant too, with two large properties with land, Haresfield Farm with its extensive build-

ings and paddocks and Hardwicke Farm at Upton, a historic house with barn and 13 acres; both these properties blend well into our equestrian portfolio. Beechdene, an impressive house a Sheepscombe with lovely views, Cherry Tree Cottage also at Sheepscombe with its sumptuous interior design, Spring Cottage, a very pretty four bedroomed cottage in Kingsmill Lane, Woodbury, a roomy five bedroomed cottage in Vicarage Street and the ultimate flat at Haresfield Court with the magnificent drawing room. We are also delighted to have been appointed joint agents with Knight Frank on properties at the development of St. Marys.



STROUD MINCHINHAMPTON
MAYFAIR LONDON

Victoria Street PAINSWICK

01452 814655

www.murraysestateagents.co.uk



Estate Agents

A network of over 50 offices,
16 in London 9 International

The Old Chapel, Bisley Street, Painswick. 01452 812354
The ultimate property se@rch: www.hamptons.co.uk

Two Memorable Days

for Dr GBR (Bob) Feilden

Last month, Bob Feilden of Hambutts Mead was invited back to Lincoln by Alstom, the successor to his former company, Ruston and Hornsby Limited. It was to be a very nostalgic visit recalling his work from 1946-1959, when he had been invited to design the company's first Gas Turbine. A small team was formed and had great freedom in the design of a prototype, which cut much new ground, being conditioned by all he had learned as a member of Sir Frank Whittle's jet engine team from 1940-46. The team set themselves the task of producing an engine that would have several of the characteristics of a jet engine, rather than being built like a conventional steam turbine which required long periods to start and stop. The design worked very well, the slightly revised version of it remained in production for 37 years, with only minor changes. It became clear that it had founded a large industry with considerable employment in Lincoln.

Several of the original team who Bob described as "still very hail and hearty more than fifty years later" met him there. The proceedings began with a dinner given by the University, the City Council and Alstom in the University Sports Hall.

On 22nd January Dr. Feilden was Awarded the Degree of Honorary Doctor of Technology of Lincoln University. The Award was made after degrees had been given to a large number of Lincoln University Graduates in the Nave of Lincoln Cathedral. He described the award as "a most memorable occasion and I am very grateful to the University for the Honour they did me".

Finally, on the evening of 22nd January he was called to the City Guildhall for admission as an Honorary Freeman of the City of Lincoln. This was a very great honour as was clear from the short list of previous Freeman. The list includes the name of Chad Varah, the founder of the Samaritans, who also present at the ceremony. Bob was very pleased to meet him and talk to him about his brother Bill who lives in Painswick. The Guildhall is a most historic building and Bob was very moved by his meeting with the Mayor, the Sheriff, and the Councillors. As a 'bonus' he was also taken for a special visit to their commemorative collection of silver swords, medieval hats etc., all of which are very interesting and significant.

This concluded a wonderful two days for Bob and Diana Feilden, and he told the Beacon "how honoured I was to receive these Awards and listen to the speeches recording my contribution to Industry in Lincoln and that, looking back after so many years that it is borne in upon one that our early work was important to the future prosperity of the area".



The Joys of Scottish Gardens

What greater delight could there be on a gloomy afternoon in February than to be whisked away to exotic gardens in Scotland shown in all their seasonal glory? It seems unlikely that any garden in the far north could be termed "exotic" but this is exactly what Mr. R Watkins proved when he started by introducing members of Painswick Horticultural Society on 12th February to gardens in the Mull of Galloway and the area around Ullapool that benefit from the Gulf Steam.



Later, we were shown, on very beautiful slides, equally lovely gardens in Aberdeenshire and Perthshire as Mr. Watkins lived for many years in Scotland. He gave us much to feast our eyes on whilst stressing the habitat and conditions needed for plants of the rarer species to thrive.

We have enjoyed Mr. Watkins' talks on several previous occasions but never more than this time and quite a few members will have noted the fact that he includes visits to many of these gardens in the course of holidays in Scotland which he organises.

Pauline Lamont Secretary

Mothering Sunday Preacher

Pat Harris, will be the preacher at the 9.30 service at St Mary's Church on Mothering Sunday, March 30th.

Pat was enrolled as a Mothers' Union member in Painswick when her husband was a curate at the Parish Church. She eventually became World Wide President while her husband was Vicar of Stonehouse.

Allen Hale
Your local stockist for
The Real Meat Company
Allen Hale
New House, Friday Street
Painswick. Tel 01452 813613

BRINGING YOU FLAVOUR
WITHOUT EQUAL
WELFARE WITHOUT COMPROMISE

01452 615 249

JOHN SAUNDERS
CERAMIC WALL AND FLOORING SPECIALIST
For all your tiling requirements

BRIDGE HOUSE
BENTHAM
CHELTENHAM Tel. 01452 864210
GLOS. GL51 5TZ Mobile 0976 352360

GRAHAM FEAKINS HND
Tree Surgeon

- Tree felling
- Reshaping
- Stump grinding
- Hedge trimming
- Fruit tree pruning
- Garden clearance

PROFESSIONAL QUALIFIED FULLY INSURED RESIDENTIAL COMMERCIAL FREE ADVICE

OVER 20 YEARS EXPERIENCE

FULL COUNTY COVERAGE

01242 680362
GREEN ORCHARD, DEERHURST, TEWKESBURY

PLANNING MATTERS

A summary of information received from the Parish Council. Painswick locations unless indicated.

NEW APPLICATIONS

THE MALT HOUSE, VICARAGE STREET
Erection of garden room extension to dwelling.

FOLLY COTTAGE, PAINSWICK BEACON
Erection of 2 storey extension and log store.
Demolition of existing garage and garden room.

WINDRUSH, BEACON CLOSE Erection of extensions and conservatory.

Garden of ARIES, HAMBUTTS DRIVE
Erection of one detached dwelling with separate garage and new access on to Hambutts Drive.

Farmyard adjacent to PAINSWICK LODGE, SHEEPSCOMBE rebuild existing pig pen to create garden store.

1 PULLENS ROAD Retrospective application for erection of replacement garage.

SOLOMON'S BYRE, ELCOMBE, SLAD
Erection of double garage.

HAMMONDS BARN, PAINSWICK OLD ROAD
Erection of extension

REVISED PLANS

FIELDWAYS, LONGRIDGE, SHEEPSCOMBE
Erection of new dwelling to replace existing.
Approval of reserved matters following outline permission. Main changes: Reduced scale and garage detached.

CONSENTS

TILIA, CASTLE HALE DRIVE Insertion of 2 dormer windows (resubmission following approval 02/1256)

RED STABLES, YOKEHOUSE LANE, BULLS CROSS
Change of use to part domestic storage and part domestic workshop.

THE LODGE, GYDE HOUSE, GLOUCESTER ROAD
Erection of a new garage.

Farmyard adjacent to PAINSWICK LODGE, SHEEPSCOMBE
Erection of garage.

FORTUNES WELL, SHEEPSCOMBE
Replacement windows.

BELL COTTAGE, FRIDAY STREET Internal alterations to modern extension at rear of building.

Land adjacent to PAINSWICK LODGE, SHEEPSCOMBE
Retrospective application for construction of hardcore track across paddock.

Land at STROUD ROAD (CARE CENTRE)
Erection of temporary single sided non illuminated site board.

WOODSIDE, JACKS GREEN, SHEEPSCOMBE
Retrospective application for insertion of dormer windows to side roof slope.

FORTUNES WELL, SHEEPSCOMBE
Construction of driveway.

CAMPERDOWN, LONGRIDGE, SHEEPSCOMBE
Erection of single storey extension.

PAINSWICK LAWN TENNIS CLUB, BROADHAM FIELDS
Erection of a pavilion at the Tennis Club

REFUSAL

BARNCROFT, BLAKEWELL MEAD Outline application for erection of one dwelling.
DENBURY, THE HIGHLANDS Outline application for erection of one dwelling.

Madeline Curran
Gardener

Maintenance of
Beds and Borders
Lawnmowing
07766 122799

Minibus scheme could provide missing links

There is now a cost effective alternative for community groups and schools who need to use transport on a regular or occasional basis.

Members of the Gloucestershire Minibus Scheme (GMS) with their own minibus will be able to lend it to other member organisations who need transport in exchange for a contribution towards overall running expenses, fuel costs and any volunteer expenses. A local GMS broker matches minibus needs and availability, and is on hand to help with any problems.

This is an initiative by Gloucestershire County Council Integrated and the Rural Transport Partnership. The Rural Transport Partnership (RT) brings together the Countryside Agency, the County Council Integrated Transport Unit and the four rural District Councils (all of whom contribute funding) together with the Rural Community Council, Gloucestershire network.

A successful pilot project before Christmas saw GMS taking community groups to local Farmers Markets. The GMS launch in January saw the first two brokers starting work and over the next few months, GMS is going county-wide.

GMS is delivering some very practical benefits:

- it ensures better use of existing vehicle resources
- it builds best practice for minibus owners and users
- it contributes to general environmental sustainability goals
- it's building bridges between social services, education, transport and community organisations as well as winning practical and sponsorship support from a number of major local commercial suppliers.

For more information, call Adam Tugwell on 01452 425018 or email him on atugwell@gloscc.gov.uk

Pleasure and entertainment

10th Painswick Ball

You are cordially invited to AFTER-NOON TEA at THE CRANHAM VILLAGE HALL to the accompaniment of music by the CRANHAM HAND BELL RINGERS on SUNDAY 23rd MARCH from 2.30pm to 5.30pm.

Come and go as you please – no entry charge.

Proceeds from teas to overheads and hand bell maintenance.



This will take place at Painswick Mill on Friday 20th June by the kind invitation of Joan and Richard Wells.

For details and ticket enquiries please contact Ruth Smith on 813693.

Cheltenham Art

The Cheltenham Art Club will be exhibiting their members' work at Painswick Library between the 14th and 28th of May this year.

The Club is, quite rightly, keen to give maximum notice of this focus of their collection in May and readers are asked to jot a note in their diary as soon as they can.

Any specific information can be obtained from the Club's Publicity Officer, Lucie Tucker, on 01242 574420, email: lucietucker@onetel.net.uk, or by post: Lucie Tucker, 19 Keynsham Bank, Cheltenham GL52 6ER

OAKLEY GARDEN SERVICES LIMITED



For all your garden needs

MOBILE: 07979 590818

TEL: 01452 814533

Roland Boggon

Chartered Accountant

Fast & Efficient Service
Limited Companies
Partnerships & Sole Traders
For all your Accounting, Tax
and Business Advice
Telephone 01452 812075

The Painswick Beacon

detail until the next issue
and mostly non-weekly after that



MARCH

Sat	1	Art, half price sale	Town Hall	10.00am – 4.30pm
Sun	2	Painswick Beacon Conservation Group scrub clearing: Contact Cedric (812385) for site details	Painswick Beacon	10.00am
		Art, half price sale	Town Hall	10.00am – 4.30pm
Mon	3	Austerity Lunch: Hosts –W.I. Markets	Christ Church Hall	12.15 – 1.15
Tue	4	Painswick Dog Training Club (Tuesdays)	Christ Church Hall	
		Puppies and Beginners		9.30 – 10.15am
		Intermediate		10.15 – 10.00am
		Advanced Dogs		11.00 – 12 noon
		Mobile Police Station	Outside Town Hall	10.45am
		PCMS: "Most Easter of Churches: an insight to Orthodoxy" – Mrs Barbara Coker	Church Rooms	8.00pm
Wed	5	Probus: Walking down the Street – Mr J Dee	Ostlers Room, Falcon	10.00am
		Traditional Tea Dances – Wednesdays	Painswick Centre	2.00 – 4.00pm
		Bingo Session: All welcome. Grocery Prizes	Painswick Centre	7.30pm
		Wednesdays		
		Wives' Fellowship: Indian Head Massage, Reflexology etc – Sue Oakley	Christ Church Hall	8.00pm
Thu	6	Cotswold Care Support Group Meeting	Ashwell House	2.30pm
Fri	7	WI Market – Fridays	Town Hall	10.00am
		Women's World Day of Prayer: - Service (Preceded by coffee.)	Ashwell House	10.30am
		Carers and Fellowship Group		(10.00am)
		Women's World Day of Prayer: Service	Wynstowe	2.30pm
		Cranham – Speaker Mrs R Hinch	St. James Church	7.30pm
Sun	9	Another Granny's Attic Sale	Fiery Beacon	11am - 3pm
Mon	10	Austerity Lunch: Hosts – Tennis Club	Christ Church Hall	12.15 – 1.15pm
Tue	11	Mothers' Union: The history of 10 popular hymns - Rev Mrs Denise Cole	Church rooms	2.30pm
		Open Meeting to plan Painswick Players' 80th anniversary and Painswick 750th Charter celebrations	Painswick Centre	7.30pm
Wed	12	Horticultural Society: 'Gardens of China'	Town Hall	7.30pm
		Choir meeting - for Service of Celebration	Parish Church	7.30pm
Thu	13	Music Appreciation Group: Members Selection	Town Hall	7.30pm
Fri	14	Senior Circle: Alphabets of the World – Hugh Ross	Town Hall	2.30pm
Sat	15	Reunion of those in Painswick during 40's & 50's	Falcon	10.30am – 6.00pm
Mon	17	Austerity Lunch: Hostess – Miss Pauline Lamont	Christ Church Hall	12.15 – 1.15pm
Tue	18	Local History Society: World War II in Painswick Remembered – Members' Evening	Croft School	7.30pm
		Jazz Evening: Local musicians, no entry charge	Ostlers Room, Falcon	8.30pm
Wed	19	Coach to London: Enquiries - 813965/813227	Stamages Car Park	8.30am
		Probus: Views of Cheltenham 1740-1850 – Mr S Blake	Ostlers Room, Falcon	10.00am
		Pre-school Playgroup Coffee Morning	Town Hall	10am - 12.30pm
		Parish Council Meeting	Town Hall	7.30pm
		Wives' Fellowship: Christian Book Centre – Yvonne Hobbs	Christ Church Hall	8.00pm
Thu	20	W.I.: Hearing Dogs for Deaf People - Mrs Lawrence	Town Hall	2.30pm
		Bird Club: Bird Conservation in Gloucestershire	Town Hall	7.30pm
		Dr. Colin Studholme (Talk followed by AGM)		
Fri	21	Mobile Police Station	Outside Town Hall	10.45am
Sat	22	COPY DATELINE to Iris McCormick or Beacon Box		
Sun	23	Handbell Marathon: Cranham Handbell ringers	Cranham Village Hall	2.30 - 5.30pm
		Admission free: Afternoon teas for funds		
		Recital in aid of GEAR	1 Hambutts Mead	3.00pm
Mon	24	Calligraphy for Beginners/Improvers - Introducing/Revising the popular Gothic Script (also 31st and 7 April) £39 for 3 workshops. 01452.611614	Church Rooms	10.00am – 4.00pm
		Austerity Lunch: Hosts - Senior Circle	Christ Church Hall	12.15 - 1.15pm



Tue	25	DIARY DATELINE to Edwina Buttrey via the Beacon Box in New Street		
Fri	28	Last day of bus service H3	Painswick village	7.21am
		Senior Circle: Perceptions of Royalty - David Wynne-Morgan	Town Hall	2.30pm
		Tennis Club Quiz Night	Rugby Club Pavilion	7.15 for 7.30pm
		Music Appreciation Group: Concert Outing to Birmingham	Broadham Symphony Hall	prompt start
Sat	29	Music Society Concert: Natalie Clein, cello; Charles Owen, piano	St. Mary's Church	3.00pm
		Coffee Morning in aid of Mencap Homes Foundation and 'Send a Cow'	Christ Church Hall	10.00am - 12 noon
Mon	31	Austerity Lunch: Hosts - Flower Guild	Christ Church Hall	12.15 - 1.15pm

APRIL

Tue	1	PCMS: Training for Ordination – David Newell	Church Rooms	8.00pm
Wed	2	Probus: Magic Lanterns - Mr P Furley	Ostlers Room, Falcon	10.00am
		Horticultural Society booking morning for outings	Church Rooms	10.00am - 12 noon
		Wives' Fellowship: Propagation & Feeding - Janet Dent	Christ Church Hall	8.00pm
Thu	3	Theatre Club Outing to Cheltenham	The Falcon	1.30pm
		Cotswold Care Support Group Meeting	Ashwell House	2.30pm
Fri	4	Carers and Fellowship Group (Lower Washwell)	Wynstowe,	2.30pm
Sat	5	April Anniversary Issue of The Painswick Beacon Published		
		Wives' Fellowship Coffee Morning	Town Hall	
Tue	8	Mothers' Union: 'Beeches': Past, Present & Future - Mr David Seed	Church Rooms	2.30pm
		Charter 750th Anniversary Service	St. Mary's Church	7.30pm
Wed	9	Horticultural Society: Plants for scent & colour - Miss B C Jones	Town Hall	7.30pm
Thu	10	W.I.: The Inca Trail - Janet Jenkins	Town Hall	2.30pm
Fri	11	Senior Circle: The Poster as Art – Peter Clarkson	Town Hall	2.30pm
Sat	12	Helen & Anne's Spring Coffee Morning. Main charity 'Surgery Fund'	Town Hall	9.45am - 12 noon
		Music Society Concert: The Zephyr Wind Quartet	St. Mary's Church	3.00pm
Tue	15	Local History Society: Research Evening	Croft School	7.30pm
Wed	16	Probus AGM	Ostlers Room, Falcon	10.00am
Fri	18	Good Friday Procession of Witness (starts from)	St Mary's Church	10.25am
Wed	23	Coach to Bath: Enquiries 813965/813227	Stamages Car Park	10.00am
Fri	25	Senior Circle: Travel Galore and much much more Pip Millard	Town Hall	2.30pm
Sat	26	Music Society Concert: Susan Gritton, soprano Eugene Asti, piano; Joy Farrall, clarinet	St. Mary's Church	3.00pm
Wed	30	Probus: 'Gertrude Bell' - Mrs Jan Long	Ostlers Room, Falcon	10.00am
		Painswick & District Conservation Society AGM	Town Hall	7.30pm
		Speaker from AONB		

MAY

Thu	1	Cotswold Care Support Group Meeting	Ashwell House	2.30pm
Fri	2	Carers and Fellowship Group (Lower Washwell)	Wynstowe,	2.30pm
Thu	8	Painswick Players Present "Don't Dress for Dinner" performances also on 9th and 10th May	Painswick Centre	Daily
Sat	10	Music Society Concert: Quatuor Danel, string Quartet	St. Mary's Church	3.00pm
Sun	11	Christian Aid Week 11 - 17 May Christian Aid Service	Catholic Church	
Wed	14	Christian Aid Shop (Wed - Sat)	Christ Church Hall	Daily
Tue	20	Local History Society: Annual Outing	Croft School	7.30pm

JUNE

Tue	17	Local History Society: Annual General Meeting	Croft School	7.30pm
Fri	20	The Painswick Midsummer Charity Ball	Painswick Mill	7.30pm

JULY

Tue	1	PCMS: AGM Speaker – The Revd John Longuet-Higgins	Church Rooms	8.00pm
Sat	5	Beacon Village Quiz	Painswick Centre	6.45pm



PAINSWICK WEATHER						
report from Sheepscombe School						
for the period 21st January to 20th February						
date	Rain	Temperature		Pressure	Wind	
	m m	min °C	max °C	m b	speed/ direction	
21	6	-1	9		0	gre
22						
23	Christmas holidays					
24						
27	0.5	-2	3		0	
28	1	-2	3		6	gre
29	1	-2	4		0	
30	3	-5	-4			cle:
31	0	-4	-2			
3		-2	5		5	
4	school visit no readings taken					
5		-5	4			t
6	5	-5	1		0	t
7		-4	0			
11	10*	0	8			gr
12	0.5	2	9			g
13		0	6			g
14		1	6			
17	0.5	-6	0		4	gr
18	0	-6	4		3	
19		-3	9			
20		-3	8			
21						
	1.84	-2.2	3.9			A

* Weekend reading
Bitter icy wind limited some of our play activities
Extremely cold spell at the beginning, and latter part of

Coaches to London and Bath

Seats are still available on the coach to London on Wednesday 19th March. Fare £10.



There will be a coach to Bath on Wednesday 23rd April leaving

Stamage's Lane Car Park at 10.00am. For the return journey the coach will leave Bath at 5 pm. Fare £6.

Bookings by cash or cheque (payable to "Painswick L&B Outings") should be made with Joan Truman, Little Place, Hollyhock Lane, Painswick GL6 6XH. Enquiries to Joan Truman 813965 or Pauline Berry 813227.

COLIN NASH

Contractor

Hedgecutting - Fencing - Topping etc
(With tractor or Quadbike)

Holcombe Farm, Painswick,
Stroud, GL6 6RG

Tel. 01452 813104 or
Mobile 07788 912546

Conservative Bridge

The Painswick Branch of the Stroud District Conservative Association will be holding a Bridge Drive, including tea, in the Church Rooms on Saturday 22nd March - starting at 2.00pm.

Tickets at £6.00 are available from Ralph Kenber 813259, John Stephenson-Oliver 812232 and Francis Otway 812203.

Young Farmers - you don't have to be a farmer!

Painswick Young Farmers Club meets up at the Rugby Club every fortnight on Thursday evenings from 7.30 pm.

If you enjoy meeting people and having a laugh come along. Alternatively, contact Oscar Seeks on 01452.614001

PETER ELY PLUMBING & HEATING

General Plumbing
Central Heating (Gas, LPG, Oil)
AGA/Rayburn Servicing, Solar Water Heating

CORGI Registered

TELEPHONE 01452 814305

MOBILE 07779 099320

Woodland Cottage, Jack's Green, Sheepscombe

MINI-ADS

Canaries -Lanzarote. One bedroom bungalow on quiet beachfront resort with three pools. Equipped with full kitchen, sat TV, fans, and safe. Restaurant nearby. Tel. 01452.611873.

Babysitter available during school holidays. Contact 814101

19" Rotary Mower - Husqvarna Royal 49SE. Electric starter, 5.5 hp, wheel propelled (petrol). Cost £610. Only used twice. Been in store for 3 1/2 years. In prime condition. Offers. Tel 813211

Double Glazed Window - New in PVC Frame 41cm x 105cm - £15 Tel: 813711

MINI-ADS - non-commercial, maximum of 30 words - are 10p per word with a minimum payment of £1. Maximum of 14 accepted per month. Beacon subscribers have 25% discount.

*Please send money with mini-ad to Philip Oakley, Stoneleigh, Gloucester Street, GL6 6QN
If paying by cheque, please make it payable to The Painswick Beacon. Receipts are not forwarded unless requested.*

Day care for Painswick?

The district nurses are hoping to develop a day care facility for older people in Painswick.

The intention is to provide a centre locally that will offer social activities and health promotion. We would like to set up a small steering group to consider the various options and to decide on the best way forward. In particular we need people with experience who would be willing to volunteer for the roles of treasurer and secretary.

If you would be interested in helping us in any way, please write to us at the surgery, or e-mail
jackie.smith@glospart.nhs.uk

District Nurses

BAY TREE GARDEN SERVICES



Landscaping
Fencing
Lawn and Hedge Work
General Maintenance
Water Features
Garden Design
Tree Surgery

Free Estimates ♦ Fully Insured
Tel: (01452) 538264
Mobile: 07900 684899

www.baytreegardenservices.co.uk

The Personal Column

Babies

Congratulations to ADRIAN and HELEN PRICE on the birth of their second daughter, Harriet Frances, on 7th February, a sister for Sophie and a second grandchild for Jennifer and Stewart Price,

also, congratulations to VICKI BUTLER and DANNY LUKE on the birth of their daughter, Holly, on 11th February, a sister for Patrick and James.

Get well soon

Best wishes for a speedy recovery to BARBARA THORLEY, BARBARA HULME, DOREEN BOON, MARION RATCLIFFE, THELMA DALE and CEDRIC NEILSEN who have all had health problems recently.

The Gwinnell family of Madams Wood have put a seat on Painswick Beacon in memory of their son Mike.

With kind permission of Amaury Blow, and thanks to Warren Nicholls for donating the concrete base.

Ros and Brian Gwinnell

Condolences

Our sincere sympathies go to the family and friends of BILLY BENSON, MRS ZINKIN, JEAN GREENAWAY, BARRY EDWARDS and RAY BARNARD who have all died recently.

Welcome

We would like to welcome CHRIS JELF and JULIE THOMPSON who have come to live in Oak House, Hambutts Drive, and GWYNETH CANNON who has come to live at No.7 Ashwell House.

Farewell

We are sorry to say farewell to MOLLY and TOM MARTIN who have moved to Stow-on-the-Wold.

Our Anniversary

Next month will be the one in which we will be celebrating the 25th Anniversary of continuous publication of The Painswick Beacon.

Today's issue is the 300th.

Charter Dance

There is to be a dance in the Painswick Centre to celebrate the 750th Painswick Charter.

The dance is to be held on Saturday 12th April 2002. The Band and O.U.R.S disco will be on hand to provide the music and there will be a pig roast. Tickets are £10 each and will be available at the Post Office and Chancellors Tea Rooms shortly.

Plans are in progress for a celebratory Charter Week from 5th to 12th July culminating in Victorian Market Day on the 12th. Watch this space for more information!

Lyn Black + Charter Dance and Victorian Market Day Committee.



Victorian Market

Painswick Victorian Market Day this year will be on Saturday 12th July.

Help is always needed especially with childrens activities and car parking, but any assistance would be welcome. If you think you would like to be involved please call. David Archard 812103, Beverley Gorton 812716, Lyn Black, 812324 or Damien Norfield-Jones 814082.

Lyn Black + Victorian Market Day Committee

Publication Date

SATURDAY 5th APRIL

Items for publication to Iris McCormick, St.Anne's, Gloucester Street GL6 6QN

SATURDAY 22nd MARCH

Mini Ads to Philip Oakley, Stoneleigh, Gloucester Street GL6 6QN by

SUNDAY 23rd MARCH

Business adverts to Liz Fisher, Harebell Cottage, Blakewell Mead, by

THURSDAY 20th MARCH

Diary items (only) to Edwina Buttrey,

Note: Beacon Post Box only this month

TUESDAY 25th MARCH

Letters and articles for publication are welcomed on computer diskette (returned after use) or by email to:

painswickbeacon@supanet.com

Items to be published, and other mail for the Beacon Committee, can also be placed in the **Beacon Post Box** in New Street (next to the telephone kiosk).

Please provide your name, address and a contact phone number.

The **Beacon's telephone number is 814500**, and can accept short recorded messages: our **fax** is on **01452.814500**

□□□□□ □□□□□□□□

Editorial/Production Team

Leslie Brotherton 814500

Terry Parker (& Sport) 812191

Copy Editor: Iris McCormick 812879

Personal Column: Rachel Taylor 813402

Diary: Edwina Buttrey 812565

Feature Writers:

Carol Maxwell 813387

Jack Burgess 812167

Business Advertising: Liz Fisher 812130
and Roy Welbourn

Distribution: Gus Gaugain 812599

Treasurer: Philip Oakley 813936

Please note the change of collection point for April diary items.

DAVID ARCHARD

In association with
Philip Ford & Son Ltd

FUNERAL DIRECTORS
AN INDEPENDENT FAMILY BUSINESS

Private Chapels of Rest
24 Hour Personal Service

DIRLETON HOUSE
CAINSCROSS ROAD
STROUD

01452 812103
or 01453 763592

The
Anthony
Fisher
Curtain Company

SPECIALIST CURTAIN MAKER

A very personal advice and making service for simple drapes or elaborate window dressings. For an appointment to see thousands of fabrics, everything from Sandersons to Coloroll, in your home or my office/showroom at:
41 Brunswick Road, Gloucester

Please ring **Glos 309333 (day) or Painswick 812130 (evenings).**