

The Painswick Beacon

Volume 29 Number 8

Sine praeiudicio

November 2006

Put your stamp on it

The Beacon has, hardly surprisingly, received many observations about our Post Office; not least mixed relief that it was not sold at auction early last month to someone who might not have maintained its valued services to the community. There is, none the less, sympathy with Annie Littler that she has been frustrated at this point in time in relieving herself of the burden of maintaining all that the office represents in Painswick.

We were setting about presenting readers with an appraisal of the current situation when our attention was drawn to the heartfelt notes John Sharwood Smith had prepared. So apposite are his observations, and so close to what we were writing ourselves, that we reproduce them here with the permission of John and Annie - without hesitation.

"Annie, our Postmistress, has served us well (as did her predecessor) for four years, being kind and patient with the elderly and slow-witted, (among whom I am bound alas! to include myself), while being equally quick, accurate, well informed and businesslike with those who have kept all their wits about them. She now wants to find a successor like herself and her predecessor, and withdraw, since she has pressing responsibilities within

her family. But she cannot do this until she has evidence that Painswick is supporting her, despite the vacillation on the part of officialdom, and even open hostility shown towards village Post Offices throughout the country.

Are we supporting Annie? Supporting her, that is, enough for a potential applicant of her calibre to feel sure of making a proper living as Painswick's Postmistress?

How should we show our support of her? I would not suppose many of us would be happy marching round the village shouting fierce slogans and carrying banners inscribed 'Hands off our Post Office' But what we can do is take more seriously the versatility available to a modern Post Office e.g. to execute the payment of our gas and electricity bills, and our Council Tax; arrange foreign currency and travel insurance for those who are still vigorous enough for foreign travel (from whom I am

bound, alas! to exclude myself); make withdrawals and deposits (without commission) from our banks (LloydsTSB, Barclays, Nationwide and some others); pay car tax and arrange car insurance (for those lucky enough to be still driving), and house insurance. Making use of these services, I am assured, will make, individually and cumulatively a significant impact on the income accruing to the business. On the other hand it will - for me at least - mean changing long-standing habits (anathema to the elderly) but fewer habits than I would have to change in a Post Officeless Painswick.

BEFORE
it
is
too
late



A Post Officeless village is no true village. It is not a social unit but solely

a dormitory for commuters and others whose interests lie elsewhere. True, our Post Office is small; too small for more than two counters and a shop counter - but if we wanted a brisk, impersonal life conducted in capacious impersonal premises, we would not have come to - or stayed in - Painswick. True, it is the elderly who would most miss our Post Office, but elderliness is something that comes to us all, and often takes us by surprise, leaving us wishing we had thought about it long before. True - but enough! If you have read this far you will probably be capable of putting my case far better than I can."

Gloucestershire Rural Community Council are among those who remind us that the future of the Rural Post Office Network, supported by a £110 million government subsidy, is shortly to be decided by the Department of Trade and Industry. Rural post offices make an overall annual loss of £140 million with profits from urban post offices making up the £30 million shortfall. In March 2008, the 'Social Network Payment' as it is known will end and Gloucestershire Rural Community Council believes that unless we act immediately, the DTI will decide the issue on commercial considerations alone. The result of this would mean the end of subsidy leading to the closure of substantial numbers of rural post offices.

In addition to this, we would see the end of local access to postal and other services including pensions, benefits, banking and in some cases vehicle excise licences. hub of the community and village life providing informal support and help to local residentswill affect the most vulnerable members of our communities - older people, those with disabilities, on low incomes and without access to transport.

GRCC accepts that some consideration must be given to financial concerns, but this must not be the only priority At a time when Government is looking to increase local access to services, any move to reduce the rural post office network would be detrimental to the overall policy. Lesley Archer, Chief Executive of GRCC commented, "Rural post offices and stores are often the focal point of a community. Not only do they offer local access to basic needs but in so many cases a lifeline to older residents also. The loss of these facilities can only serve to further increase social isolation within this age group and highlight the urgent need for policy makers to work in a more integrated way".

Two courses of action are very clear

- 1 Use our Post Office now - boost its turnover and hence its potential as a business.**
- 2 Make your views known - even to our MP David Drew, 5a Lansdown, Stroud, Gloucestershire**

Elsewhere, in this issue: Jessica's thanks, off to Peru, concert invitations, trembling leaf messages, new gallery in Friday Street, a senior moment, extra village diner, update on the library, trip to the causeway, the performance of the century, several fairs, fayres and some sales too, coffee everywhere, the pavilion opened, and stocking for Christmas.

PARISH COUNCIL NEWS - by Leslie Brotherton

Reports upon meetings of the Parish Council cannot help but be selective, if only because of space constraints. We try to highlight points of wider interest. The full minutes of Council and committee meetings are available at the Council office and elsewhere.

PLANNING

A somewhat 'thin' agenda this month.

Richmond-Painswick

The Chairman, David Hudson, read a letter received from Susie Oakley, Manager of Richmond-Painswick, indicating that the planning application for Phase 3 of the development in Stroud Road was expected to be submitted towards the end of October. She indicated that arrangements were in hand for a public consultation to be held between 11.00am and 6.00pm on Wednesday 8th November in the Town Hall, and extended an invitation to councillors to visit the site at 9.30am in order to see the plans and exact location proposed for this final phase of apartments, and a follow-up explanation of its content immediately afterwards back at the Town Hall - this so that they were well informed prior to any deliberations they may subsequently have on the application.

David Hudson urged councillors to avail themselves of this opportunity. He invited District Councillor Barbara Tait, who was present, to comment upon such action by the Parish Council and she indicated that it was very important to gain understanding by discussing such a project with the developer, provided no indication is communicated as to any preliminary views held.

Ann Burges Watson enquired as to whether this was the right moment to urge that a substantial Section 106 Agreement be sought for this application and that such be associated with the library issue currently of concern. Terry Parker agreed that whatever the Parish Council finally agreed to recommend it could be helpful that a 106 Agreement be signalled at this stage. Such was supported but the committee affirmed that the application, once received, should be assessed entirely on its merits.

Jenkins Lane - tree felling/clearance

The Chairman reported that the County Council would be receiving expert advice from an arboriculturist prior to any clearance work on the plantation at the upper end of Jenkins Lane.

PARISH COUNCIL

Youth Club

The Chairman, Terry Parker, reported that a meeting had been held to which the 23 youngsters expressing interest in the continuance of the youth club had been invited. Unfortunately the date coincided with school events, which limited the attendance to eight. A further meeting is to be held early in November.

The Council agreed with his and Martin Slinger's recommendation that, if sufficient numbers warranted, the club

be offered a 6-month continuation of financial support but that if attendance waned significantly (say to less than 18 members) in that time such be discontinued and the club closed.

Library

(See separate report opposite.)

Lay-by signs

The Council received a decision by Mr Roberts of GCC Highways Departments that, in view of the considerable adverse comment these signs to the side of the road between Sheepscombe and the A46 would be removed forthwith.

Tarmac - Tibbiwell/St/Marys

Martin Slinger reported detailed discussions with the County Council's officers regarding the differing grading of tarmac and its general condition in these roadways.

It was particularly noted that warranty of this surface was for twelve months and that inspections would be undertaken throughout this period.

Painswick Hotel signage

It was noted that all but one of the intended signs had now been erected in a neat and discrete manner.

Interactive speed signs

The Council noted that GCC officers were considering action to reinstate wind/sun powered mechanisms for these signs. Ann Burges Watson urged that their operation when vehicles were travelling at excessive speeds be recalibrated.

Press releases

The Council noted that there were occasions when information obtained verbally by the press was misinterpreted and the wrong impression thereby conveyed to the public.

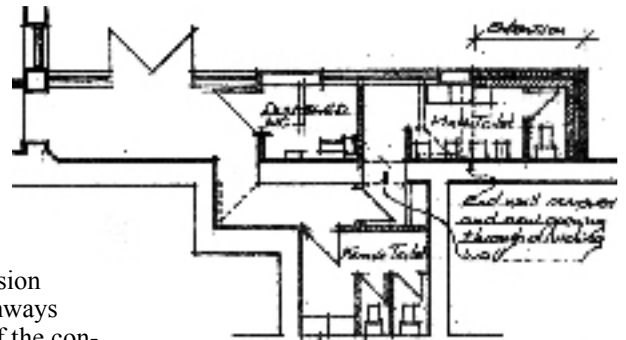
It was agreed that such would not only normally be conveyed in writing but be routed through the Clerk or the Chairman. The occasional initiation of press releases by the Parish Council would be considered where accurate information to be communicated to the public was deemed of immediate relevance.

Public conveniences- St.Mary's Street

The Chairman drew attention to the declared intention of seeking to upgrade these toilets, a matter which was still unresolved for mainly financial reasons.

He reminded members that when the survey of the Town Hall had been undertaken recently the toilets to the rear had also been earmarked for upgrading and suggested the possibility of these, with access from the Town Hall car park, also being for general public use. He tabled copy of the first design prepared to incorporate a toilet for the disabled, and suggested that these could readily be isolated from the hall itself (when there were no meetings).

Members undertook to reflect upon these plans (copy shown here) and, hence, the possibility of disposing of the building in St.Mary's Street.



Budget 2007 and Precept

Chairman of the Finance and General Purposes Committee Johnny Johnson presented a detailed appraisal of the Council's finances, and proposals to tightly constrain outgoings for 2007-08. After considering specific reductions it was agreed unanimously to make a precept upon the District Council of £64,250.00 which is an increase of 4.86% upon the current financial year. Whilst this was in excess of some measures of national inflation it was suggested that the Parish Council maintains a high standard of service and that the increase was best seen as the amount per household. (The beacon calculates that, given about 1350 households in the civil parish, and a precept in the current year of £61,270.00, the increase represents about £2.20 per household per year.)

Speed limits - Cheltenham Road

Ann Burges Watson reported that the GCC traffic officer would be attending the next meeting of her committee to share information gleaned from a survey in the summer and discuss the possible relocation of the 30mph speed limit as requested by residents.

December meeting

It was agreed to bring forward the date of the December meeting of the Council to Thursday 14th.



01453 766312
MOB 07949792501
www.pccomputerrepairs.co.uk

For all your computer needs
Local friendly service
No call out charge
New systems, upgrades, memory
harddrives, broadband installations
problem solving, virus & spyware removal
System backup & system setups
Tutoring available for the novice user

Library update

Reporting for these pages requires that the ear be pretty close to the ground, and matters associated with the future of the library and/or its premises has now slipped into this category of enquiry. We await information upon the deliberations or modus operandi of the group forming itself consequent upon the Core Group report across our pages 8-9 last month, and their published paper.

At the **Parish Council** on the 18th October it was said that David Hudson was awaiting appointment of a representative from Christ Church and the views of that congregation upon the proposals on the table; that being anticipated for Sunday 22nd. Meanwhile a group had been drawn together comprising David Harley from St.Mary's, Edward Young and Paul Moir businessmen, Peter Rowe for his expertise, and an invitation extended to the District Councillors for one of them to join. The complete group hoped, he said, to meet in this coming week.

Meanwhile we heard tell that **County Library Services** had carried out a new 'risk assessment' and decided that they could reduce to single manning, when open, with immediate effect. Since this would seemingly mean that the duty 'librarian' would not have time to discuss with customers their needs or enquiries, proactively promote library services or even restack and tidy shelves, we raised this with Assistant County Librarian Jo Hand. We were also wondering whether this heralded the opportunity/challenge of seeking additional manning by 'volunteers' to satisfy the routine needs and free the 'librarian' to carry out their trained role?

Jo Hand responded to our understanding of this scenario by saying "As part of our ongoing management of resources, any vacancies which occur are carefully reviewed, at all of our 39 libraries, to allow us to consider carefully whether we need to replace the post like for like, or whether we can operate staff timetables differently to reduce costs slightly.

A vacancy recently came up for a Library Customer Assistant for 16.75 hours and we decided to reduce the replacement post to 8 hours. In making this decision, we took into consideration the recommendations of a risk assessment carried out with the agreement of Unison. This assessment identified that we would be able to operate Painswick library on single staffing for some of its 16 opening hours a week, based on the current levels and patterns of use. The key tasks carried out by the Library Customer Assistant will continue to be done within those hours. This post is not a professional or qualified librarian post.

In the meantime, the work currently carried out to manage and promote the service and to do outreach in the community will be unaffected as the hours of the Library Service Manager and of the Service Development Librarian responsible for Painswick remain unaffected.

Finally in relation to volunteers, I feel that it would be premature to do anything about this at present. Instead in the light of the bigger picture of the Core Group/Parish Council presenting their proposals to GCC very shortly, I think we need to consider the use of volunteers in this context. We would want any consideration to fully involve Unison as we must be clear that volunteers are not replacing staff jobs and secondly we would wish to manage any volunteers in a professional way in terms of recruitment, induction, support and training. We have a management toolkit in use across the library service which we use with other volunteers who currently carry out a range of tasks in libraries and a volunteer role description for each one.

I hope these points are helpful to you."

Conservation Society Chairman, Douglas Robinson, has written to the Parish Council to say "At a regular committee meeting of the Society (on 12th October) it was agreed that the aims of this project should have our full support. Obviously there is much to be done yet, following the considerable work by the Core Group, and not least in the financial arena but we feel that there is considerable potential in the possibilities that have so far been discussed. We look forward to hearing of the next steps.

Services of Remembrance

The annual
Service of Remembrance
will be held in St Mary's Church
at 10.50am on
Sunday 12th November.

On Remembrance Day itself,
Saturday 11th November,
also at 10.50am
there will be a short period of
recollection at the
War Memorial
during which wreaths will be laid.

All local organisations are invited
to participate in the
wreath laying ceremony.

Everyone will be most welcome
at the services.

ELECTRICAL AND ALARM SERVICES

New Installations, Repairs, Extra Sockets,
Light, Sockets, Security Lighting,
Economy Heating, etc.

Professional intruder alarm
systems fitted from £339.
Remote control car alarm.
£199 from 2011.

Door Entry and Closed
Circuit Television Systems Fitted.

For a friendly, prompt and
reliable service contact
Steve Gallagher
on 01853 791209

ALL WORK FULLY GUARANTEED
WITH NO AFTERCARE

Brinkman Building Ltd

**Building, Plumbing
and Carpentry work.**

**Kitchens and
Bathrooms designed
and fitted.**

**01452-812924 - Evenings
07796-440101 - Mobile**

Phase 3 CONSULTATION



RICHMOND

**Wednesday 8th November
in the
Town Hall
11.00am until 6.00pm**

**Final phase proposals
Public consultation
Plans on view and
questions answered by
architects and managers**

Partnership

Churches Together Around Painswick cordially invite you to their

**AGM at 7.30pm on
Wednesday 15 November
in Christ Church Rooms,
Gloucester Street**

After the business meeting and light refreshments we will have the opportunity to hear Bruce Thomson speak to us on the work of World Vision with particular reference to their programme "Churches in Partnership" (in which St Mary's is already participating). Bruce Thomson's role with WV is in encouraging church leaders of all denominations and their congregations to find ways of partnering together to alleviate poverty.

Bruce Thomson has a very wide experience of work in the developing world from the perspective of different agencies and in different continents. With a personal background of business experience together with a number of theological degrees he is well fitted to cope with the most awkward of questions. Please join us to discover more!



Jane Jennings Taylor

Village Quiz 2007

A reminder, so that club committees and friendship groups can plan well in advance - the annual Village Quiz is scheduled for Saturday 11th March next year.

PAINSWICK VILLAGE DENTAL SURGERY

Les Robinson B.D.S.,
Private, Denplan

Appointments available 6 days a week and late evening Thursday

* Cosmetic Dentistry * Hygienist
* Personal Professional Service in Relaxed Atmosphere

TEL: 01452 814427

Hayland House, Gode Road, Painswick
Glos. GL6 6RD

GRAHAM FEAKINS HND
Tree Surgeon

<input checked="" type="checkbox"/> Tree felling	PROFESSIONAL
<input checked="" type="checkbox"/> Reshaping	QUALIFIED
<input checked="" type="checkbox"/> Stump grinding	FULLY INSURED
<input checked="" type="checkbox"/> Hedge trimming	RESIDENTIAL
<input checked="" type="checkbox"/> Fruit tree pruning	COMMERCIAL
<input checked="" type="checkbox"/> Garden clearance	FREE ADVICE

OVER 20 YEARS EXPERIENCE

FULL COUNTY COVERAGE

01242 680362

GREEN BUSHARD, DEENHURST WATTON, CHELTENHAM

LIGHTING AND MANAGEMENT PROJECT SERVICES
For all your keep and lighting needs

COMMERCIAL SECURITY, KITCHEN, BATHROOM, GARDEN LIGHTING A SPECIALITY

VISIT OUR SHOWROOM AND BROWSE AT YOUR LEISURE

For lighting design and advice contact
David Matthey on :
01453 768888
or
severnelectrical@lineone.net

FRONESIDE, DR NEWTONS WAY, STROUD,
GLOUCESTERSHIRE GL5 3JX

The Lighting Division of Severn Electrical Wholesale Ltd.

Extended lunch club invitation

KEEP WARM THIS WINTER WITH HOT MEALS

at midday

ASHWELL LUNCH CLUB TUESDAYS AND THURSDAYS

Do you or an elderly neighbour (65yrs+) have difficulty cooking hot meals regularly during the winter?

If you would like to come to Ashwell House twice a week where two course hot meals are served in the dining room or would like to receive Meals on Wheels on any or every day of the week then please contact Michelle Elliott, the Scheme Manager, to book - 812726.

The cost is £2.20 a meal.

It may be possible to arrange transport if needed.

Jane Robinson

Secretary to Ashwell Lunch Club, 4 Berry Close 812590

Symphony Hall concert opportunity

The group organises occasional visits to concert venues of distinction and will, this month, be travelling by coach to the Welsh National Opera production of La Bohème at the Bristol Hippodrome. Interest has exceeded expectations.

The highlight of most years is our visit to what many regard as the No.1 concert hall in this country, the Symphony Hall in Birmingham. By being very fussy about which performance to choose, and by making a block booking for tickets, and having a coach to take us right to the front door of the hall, this invariably turns out to be an 'evening to remember'. We do not limit our arrangements to members only, offering coach seats and discounted admission to any who want to come along. However, like us, it is **essential to book well in advance - in this case by the end of November** - through Stewart Price on 814241. Are you interested in the 9th February concert by

Painswick Music Appreciation Group

The Philharmonia Orchestra

Conductor - Charles Dutoit

Pianist - Mikhail Pletnev

performing

Berlioz: Overture - Le Corsair

Greig: Piano Concerto

Tchaikovsky: Symphony No.5

Tickets £18 to £26 and a coach leaving Stamages about 5.00pm

Wreathing

A Christmas Wreath Workshop is arranged for 12th December, in The Town Hall.

There will be three sessions, 10.00-12.30, 2.00-4.30, and 7.00-9.30pm.

All equipment will be supplied, but if you have a theme or greenery, ribbons and baubles you would like to bring along, you are very welcome. The basic design will last for years.



To book a place please ring 812427. All proceeds will go towards the Flower Festival 2007 and the tombstone project.

Anne Smith

Sue Ryder Care

Our annual Coffee Morning will be held in the Town Hall on Saturday 11th November from 9.45 to 12 noon. Entrance £1.20.

As usual Coffee, Tea, Hot Chocolate with homemade mince pies or biscuits will be served.

Cakes, Preserves, Raffle, Books, General stall, Christmas cards will be on offer; Fresh flowers and Roulades are also available if ordered.

All good quality items will be gratefully received.

The two minutes silence will be observed at 11.00am. If you have attended the service at the War Memorial, why not pop in afterwards for a hot drink and a mince pie: a warm welcome will be extended to everyone.

Cake stall: K. Davie 812818

Raffle Prizes: H. Baker 81309

Group Co-ordinator: Anne Leoni 812521

Launch of a 'Limited Edition'

Do come to the Village Hall on Saturday, 11th November from 11.00am to 4.00pm when you will be able to buy boxes of the Sheepscombe 'Limited Edition' Note Cards

The boxes of cards will contain 4 different designs by 4 Sheepscombe artists and will make an ideal present for yourself and a gift to send to family and friends. The artists will also be mounting an exhibition of their work and there will be the opportunity to buy paintings.

Come and browse and drink a glass of mulled wine or a cup of coffee. All welcome! Proceeds from the sale of cards will go towards the completion of the work at the Village Hall.

Gordon Horner

Swans on the Tundra



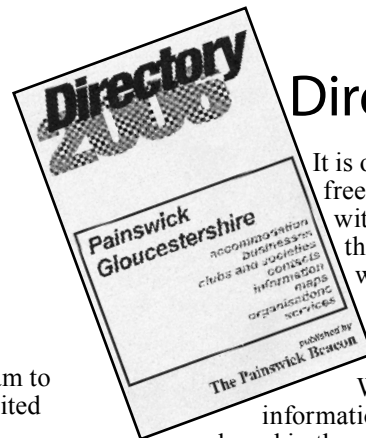
Wildlife and Wetlands Trust research assistant Jenny Earle gave a fascinating illustrated talk on "Bewick's Swans on the Move" to a large appreciative audience, which included members of the Women's Fellowship who were our guests for the evening. Jenny's work involves observing the swans on their North Arctic tundra summer breeding grounds, and tracking their 2,500-mile migration route along the continental coast. Up to 400 annually over-winter at the Slimbridge reserve. Overall numbers are thought to be declining due to global warming and competition between species in a shrinking tundra habitat.

Our next meeting is an illustrated talk by Helen Williams on a "Voyage to St.Kilda - the island on the edge of the world" at 7.30pm on Tuesday 7th November in the Town Hall. Bring money to purchase cards and pictures. Don't forget your warm clothes if you have tickets for the RSPB bird watching cruises on the River Exe in early December!

Bill Boydell

Jazz in the Ostlers

On 18th November and 9th December the Ostlers bar at the Falcon Inn will be transformed into a jazz club. Starting at 7.30pm amateur jazz musicians from all over the UK will perform a number of jazz standards. Think Cole Porter, George Gershwin and Antonio Carlos Jobim. The performance will be followed by a jazz jam where local musicians will be joining in. Entrance to both public and musicians is free. Reservations suggested only if you want to eat. Call the Falcon Inn on 814222 for more information or to reserve a table for dinner. Musicians can email Rick Spence from WebTech-Rspence@WebTech-Corp.com



Directory 2007

It is our practice to publish a free issue of the Directory with the December issue of the Beacon, a service from which we regularly receive appreciative feedback - not least from newcomers or short-stay visitors.

We do our best to include information about every enterprise based in the civil parish. However, this is an exercise which relies heavily upon you, our reader, to ensure that it is as up-to-date as it can be.

Please let us know by Email or note in the Beacon box, or by post to 'Longhope', Blakewell Mead GL6 6UR, **no later than Sunday 12th November** of any changes known to you - and we will do the rest.

In anticipation - 'Thanks'!

The AIDS virus in South Africa

I am just about to leave for South Africa to visit the project and help with the completion of the needlework workshop for the girls in Esikawani. This project has been funded from the money raised in Gloucestershire, a PIN Project Supporting children orphaned by the AIDS virus in South Africa.

The workshop will be able to train some of the girls and enable them to support themselves when they leave school. I shall also be bringing back a new supply of hand made jewellery which will make ideal Christmas gifts.

There will be a coffee morning on the 25th November 2006 in Sheepscombe Village Hall from 10.00 -12 o'clock. Every one is welcome.

Pat Chase 813196



Here Sipeewee, now aged 6, orphaned at birth and brought up with his siblings by his grandmother.



Crime figures for September

Criminal damage 3
Theft from motor vehicles 2
Theft of motor vehicle 2
Assault 5
Theft 3
Burglary from dwelling 1
Burglary from non-dwelling 4
TOTAL 20

The Mobile Police van will be in Painswick on 10th and 23rd November. The usual location is outside the Town Hall at about 10.45am.

Pc 24 Reuben Wyatt
Mobile Police Station
07734.068276



Hattie visits

The children have been learning all about compost at Painswick Playgroup and on Thursday, 19th October, Rosie from Gloucestershire Wildlife Trust visited with



her friend Hattie the Hedgehog. She brought with her lots of rubbish for the children to choose what goes into the compost bin (banana skins, paper, apple cores) and what doesn't (plastic bottles and sweet wrappers). You can see from the picture, how close they examined the compost! The children will be putting the peelings from the fruit that they eat at break time into the compost bin and watching as the wiggly worms turn it into lovely compost. If you want more information about starting composting log onto: www.gloucestershirewildlifetrust.co.uk or telephone the composting hotline on 01452 313761.

There is even something for adults of any age (but particularly women) this term, a Self-Defence Workshop on Friday, 17th November from 7.00-9.00pm at Croft Primary School, run by new Chair, Jo Weatherall; £8 if you register in advance or £10 on the door. Please register either at the Playgroup between 8.30am and 12noon or at Croft School 3.00 and 3.30pm.

The workshop is raising funds for Painswick Playgroup and Croft School. For any other information please contact Jo on 813684.



RESTHAVEN

Resthaven, Pitchcombe, nr Stroud
Gloucestershire GL6 6LS
Telephone: Painswick (01452) 812682
RESIDENTIAL/NURSING HOME
LONG TERM & DAY CARE
SINGLE ROOMS
PRIVATE CHAPEL
BEAUTIFUL SETTING OVER-LOOKING
THE PAINSWICK VALLEY
Resthaven Home of Healing Ltd
Regd. Charity No. 235354



Eye examinations at home - for the housebound
Specialised service - free (NHS) for those over 60, including Glaucoma screening and full sight test
Tel. 01453 853272 or 07967 743676 (mobile)



Caroline Crawford INTERIOR DESIGN

- Interior Design
- Made to Measure Curtains
- Soft Furnishings & Fabrics
- Upholstery & Wall papers
- Paint Techniques & Flooring
- Lighting & Accessories

Opening times: By Appointment
Tel/Fax: 01452 813631
www.carolinecrawfordinteriors.co.uk
email: cc@carolinecrawfordinteriors.co.uk

The Sky Gallery

A new Gallery, based in South Gloucestershire, opens its first exhibition this weekend - 4th to 6th November - at Bell Cottage in Friday Street.

On show will be high quality paintings, textiles, ceramics, jewellery and other designer makers. In addition to the artwork will be, says contact Clare Wimperis "Some wonderful gifts for Christmas".

The Sky Gallery will move around different locations after its launch here in Painswick. Further information from Clare at 'Dialtryst' in Vicarage Street or on 810704.

Keeping trim

Help yourself and help the wildlife! Get fresh air and exercise while improving the chances for butterflies, orchids, insects and flowers.

Painswick Beacon Conservation Group needs helpers for trimming, mowing and cutting back on the Beacon to preserve the fragile habitat for valued species. Come and join a friendly Sunday morning working party! Sundays: November 5th and 26th, December 3rd and 31st. Tools provided. Meet at the Car Park opposite the Golf Club at 10.00am. For more information ring 812709.



the Beacon to preserve the fragile habitat for valued species. Come and join a friendly Sunday morning working party!

David Allott, Chairman

PayPoint

The Beacon would be less than 'even handed' if we did not mention (supplementary to our front page article) that, at Londis, there is now a PayPoint facility. As is mentioned on the 'net', PayPoint "is one of the UK's leading premier branded retail networks for the convenient local payment of household bills, mobile top-ups and now also for cash withdrawals from in-store LINK cash dispensers.

If you're a customer wanting a free and more convenient way to pay your regular bills in cash, charge up your meter or top-up your mobile, here you'll find what, where and when you can pay at a PayPoint near you. There are over 15,000 places you can pay - in newsagents, convenience stores, supermarkets and garages, most open long hours, many seven days a week".

Country Market and Christmas

Once again Christmas will soon be upon us and we would like your orders as soon as possible for cakes – iced and un-iced, mince pies, chocolate logs and puddings.

Supper dishes to cut down your cooking can also be ordered and bowls of hyacinths or presentation packs of chutneys and preserves make ideal Christmas presents.



or Patricia Davey on 813232

Delivery of market parcels nationwide can also be arranged.

If you haven't been to our Country Market before, do call in any Friday to the Town Hall between 10 and 11 and see our cakes, savouries, fresh vegetables, preserves, eggs, plants and crafts and then enjoy a cup of coffee with a slice of cake. We are always happy to welcome new producers and helpers, so if you are interested, please ring me for details on 812471

Pamela Westcott – Market manager

Charity Fayre at Christ Church

This event will take place on Saturday 18th November from 10.30 – 2.30pm, in the Church hall.

There will be a variety of stalls selling Christmas cards, gifts, bread and cakes as well as the usual raffle and tombola.

Our "Cafe" will be open, so why not join us for coffee and/or a hot lunch followed by one of our delicious sweets.

Gill Gyde

Found

A bunch of keys was found in Christ Church Hall in the early part of the week beginning Monday 23rd October.

For further details please contact Gill Gyde on 812587.



Maths and English After-School Programmes

Every parent wants their child to realise their full potential. At Kumon we can help your child to excel in their maths and English, and boost their confidence too. With a centre near you it's convenient too. Give your child the opportunity they deserve.

Call Kumon today.

Stroud study centre

Classes are held twice a week at: Stratford Park Leisure Centre, Stratford Road, Stroud

for more information call **01453 764 631**

Every child can shine
kumon.co.uk **KUMON**

Allen Hale
Your local stockist for
The Real Meat Company

Allen Hale
New House, Friday Street
Painswick. Tel 01452 813613

BRINGING YOU FLAVOUR
WITHOUT EQUAL
WELFARE WITHOUT COMPROMISE

painswick osteopaths.

Paul Stamp D.O.
Helen Froggatt D.O.

Tel: 01452 301748
Painswick Surgery, Gyde Rd, Painswick

- Structural
- Cranial Osteopathy
- Sports Injury
- Migraine/Whiplash
- Parking Available

Letters

The inclusion of letters in these columns does not imply that the Beacon committee endorses the views expressed.

Richmond-Painswick - consultation upon Phase 3 plans

Susie Oakley, Village Manager of Richmond-Painswick writes: As I believe your readers may be aware, Richmond Painswick has been considering submitting a planning application for a **final** phase of development of the Richmond Painswick site.

To ensure that all who may be interested are fully informed, we would like to provide members of the public an opportunity to view the plans for the proposed development and have any questions answered. This public consultation will be held downstairs in the Town Hall on Wednesday 8th November from 11.00 am to 6.00pm. Our architects will also be present to answer any queries.

Richmond Painswick has also extended an invitation to all members of the Painswick Parish Council to meet Richmond Painswick staff on site earlier that day so that Councillors can view the plans in relation to the actual site prior to the start of the public consultation and their consideration of the application.

Queens' not Queen's!

Alan Bamber has written from Bishopswood in Somerset: I feel I must point out that the reference last month to Queen's College Cambridge was mistaken and that the correct name is Queens' College.

Painswick Centre - again

Mark Hammond writes further on this subject: The events that caused the (Institute) Club's demise were in fact driven by the Trustee's actions.

After a year of negotiations the committee met the Trustees, and informed them that their demands could be met.

The committee then called an Extraordinary General Meeting (EGM) for the membership's discussion and approval.

Before the EGM the Trustees made two new demands. These, if met, would cause the Club to be insolvent. Without consulting the committee a letter was sent to the Trustees stating the Club would be forced to close. This was invalid without first being passed by the committee and the EGM.

The Trustees used the letter to try to force the club to close.

The committee tried to open a dialogue with the Trustees, but were rebuffed.

The Trustees objected to the Club's license renewal and effectively closed it down.

I stand by my statement that the Trustee's actions caused the club to close.

Christmas at the Guild Gallery

A selling exhibition of new work by members of the Gloucestershire Guild of Craftsmen will be on display between 5th and 30th December, at their own gallery right here in the heart of the village.

Described as "innovative and inspiring contemporary crafts by the finest makers in the region", this has to be a particularly helpful and local opportunity to buy exceptional presents at this time of year.

Open Tuesday to Saturday 10.00am to 5.00pm, and on Sundays 10th and 17th for the same times.



Did you know? No.6

That the Painswick Players' association with the Painswick Centre goes back to 1922!

The three daughters of Sir Francis Hyett, led by the formidable Miss Lucy, staged charity events at Painswick House and for the next 38 years she was responsible for, virtually single handed, 56 separate productions involving some 93 plays. In the summer these were held in Painswick House, during

the autumn in 'The Institute'. Lucy Hyett's last production was 'The Holly and the Ivy' for Christmas 1961, and she died early in January 1962. Legend has it her spirit continues to watch over each production in the form of a butterfly!

After her death, Painswick Players was formally wound up, but re-formed a few months later as the Country Players. In 1982, there was another name change, to the Painswick Dramatic Society (PaDS). Between 1982 and 1994, PaDS put on 29 productions, building to an exhausting three or four productions a year. Inevitably, something had to give, and after 'On Golden Pond', PaDS went into 'resting' mode.

In August 1997 an infusion of new blood helped bring them out of hibernation. A growing membership helped PaDS to re-establish the traditional two major productions per year and another name change brought it back to its roots, as it again became the Painswick Players. It now has a core membership of about 40 (but always looking for new members) and continues to be committed to maintaining an active community theatre in Painswick. It recently formed the YiP-Pies for the younger element of performers, whose first full production was 'The Magician's Nephew'.

The next Painswick Players production in December will celebrate the centenary of The Painswick Centre with a 're-creation' of the 1906 laying of the foundation stone coupled with an Edwardian Music Hall. A cast of thousands is promised with music and dancing and singing and merry sketches and melodrama and a chance for the audience to dress up and join in. Yet another example of The Painswick Centre's role in 'Joining up our community'!

Ralph Drew

DAVENPORT LANDSCAPES

ALL ASPECTS OF LANDSCAPE DESIGN & CONSTRUCTION

- NATURAL STONE WORK • PAVING
- BRICKWORK • DECKING • FENCING
- WATER FEATURES • TREE SURGERY
- TREE HOUSES • PLANTING & TURFING

H: 01452 813660 M: 07791 693 439

GREYSTON COTTAGE, PITCHEDOME, STROUD,
GLOUCESTERSHIRE, G16 2DP.

THE PAINSWICK PHARMACY

NEW STREET. Tel. PAINSWICK (01452) 812263

OPENING TIMES
from 1st January

MONDAY TO FRIDAY

9.00 - 1.00 and 2.00 - 6.00

SATURDAY

9.00 - Noon

Closed Sunday and Bank Holidays



Local History Teaser

This month's teaser presents a real challenge. Our photographs show what appears to be a group of school children in costume. However, nothing is known about it and we would, therefore, be very pleased if anyone can put a date to it, explain the occasion, name the setting or identify any of the children.

Thanks to Joyce Tranter for this delightful picture.



Last month's photograph, lent by Lord Dickinson, stumped everyone.

It was a most unusual view of New Street, swathed in sumptuous decorative foliage and was taken in 1856, our oldest photograph yet. The occasion was the marriage of Sebastian Dickinson to Frances Stephana, eldest daughter of William Henry Hyett.

We would be very pleased to hear from you if you have any old photographs which could be used for the teaser.

...and the Local History Society

At the October meeting of the Society Ms Caroline Swash gave a most interesting presentation on the Gere family, some of whom lived in Painswick, and her father, Edward Payne, whose beautiful stained glass windows can be seen in many local churches.

These artists, trained in Birmingham in the 1890s, came to the Cotswolds with the Arts and Crafts movement and left a rich legacy of finely executed paintings, tapestries, drawings, illustrations and glass. Ms Swash has many personal memories of them and was impressively knowledgeable about their work. She described how her father was totally involved in his art following a rigid daily routine and continuing to work into his 80s with great vitality. She made us very aware of the artistry and skill involved and we saw for ourselves that his little windows are masterpieces of beautiful detail and exquisite workmanship. Almost all the villages locally are indeed lucky to have one of Edward Payne's windows.

The next meeting will take place on Tuesday, 21st November at 7.30pm in the Croft School when Howard Beard will talk about social life around Stroud c1910.

Everyone is welcome.

Carol Maxwell



The Sheepscombe History Society

... is holding a public meeting at 7.30pm on Wednesday 8th November in Sheepscombe Village Hall.

The speaker will be John Light (who is a relative of Laurie Lee) and he will be talking about **A Sheepscombe Childhood in the 1940s**.

Admission is free and all are welcome to attend.

Ron Paterson Chairman

CLOCK REPAIRS

01453 385485
07702 088458

J. D. HORSBURY
11, The Street, Stroud, Glos. GL8 3JH

Sara Woolley M.A.R.
Member of the Association of Reflexologists

REFLEXOLOGY
Therapeutic foot massage
Relaxes • Restores • Energises

Private Clinic in Sheepscombe or Home visits

01452 813 829

Pictures on the move

Travel that has inspired my paintings was the title of his talk when local artist, Peter Jenkins, came to address members of the Yew Trees WI at their September meeting. While members were delighted by some beautiful slides of his travels they were equally intrigued to learn how Peter has worked to develop his painting techniques. This he cleverly illustrated with examples of his own work and paintings by famous artists.



He also explained why he resists the temptation to copy a holiday photograph, and the difficulty of selecting the subject for a painting when there is so much to choose from. After his

fascinating talk members were pleased to have the opportunity to admire some samples of Peter's work, which covered a variety of subjects from several parts of the world.

Following the Annual Meeting in the Town Hall at 7.30 pm on Tuesday 28th November, Andrea Linsell will demonstrate how to make your own Christmas Cards. As well as showing her audience some cards that can be made at home, Andrea will give everyone the chance to experiment with stamping and embossing their own cards. It is a wonderful opportunity to learn how to be creative, have fun and save money! So, ladies, why not come and join us!

Celia Lougher 812624

Painswick in Paintings

An exhibition by Rupert Aker

Painswick artist, Rupert Aker, is holding another exhibition of paintings of the local area. The range of oil paintings and watercolours on show has been inspired by views around Painswick, Sheepscombe and further afield. Rupert's work is found in collections at home and abroad, including the Brown-Forman collection in the US, and some notable owners in the UK include Jamie Oliver and Jonathan Dimbleby.



The exhibition is in Painswick Town Hall on 18th and 19th November 10.00am - 4.30pm

Arts and Crafts Fayre Cranham Village Hall

As many readers will know, this Fayre is held in November each year to raise monies for the upkeep of the Village Hall.

This year the Fayre will be on **Sunday 19th November**, from 10.00am through to 4.00pm. In addition to a wide range of traditional and not so traditional crafts, they will have hot and cold refreshments on sale all day, including a variety of home made soups.

The range of exhibitors will hopefully include:-
WILLOW BASKETWARE, INDONESIAN CRAFTS, HAND MADE JEWELLERY & PAINTED GLASS, CERAMICS, CANDLES, OIL PAINTINGS, CHRISTMAS CARDS, CUSHIONS & TEXTILES, WATER COLOUR PAINTINGS AND PRINTS, HAND CRAFTED POTTERY AND FRAMED BATIKS, DECOUPAGE PICTURES.

Admission to the Fayre is free but there is a raffle prize of a Large Christmas Hamper and so they like to encourage visitors to try their luck by buying a ticket!

ArchiTecs

This month we have moved the lens, and the detail - on to which property?

Last month the challenge was to identify a somewhat modern architectural feature, for which we gave a clue that most of us have a 'c.n.e.t.n' with it; filling in the missing letters gives 'connection', and might have led you to recognise the telephone exchange?



STOP SMOKING
with hypnotherapy

In a single
90 minute
session £60

Ruth Coxall DSCT
01452 812101

Paul A Morris
City & Guilds

General Builder * Plastering * Patios
Dry Stone Walling
Natural Stone Work A Speciality
Hard Landscaping

Telephone (01453) 752004
Mobile 07818 087375

Garden Party Tents From
spaceintense

Tel: 01452 813658
www.spaceintense.co.uk

Painswickian of the year

Another year, another nomination please. We will greatly appreciate suggestions our committee can consider for the accolade of Painswickian of the Year - but we need these by 17th November at the latest.

It can be an individual or a couple you feel brought credit to the village in the past year or given exceptional service to the local community. Let us know, by postcard please in no more than 100 words, why you are making your nomination and deliver or send to Stoneleigh, Gloucester Street, Painswick GL6 6UR

We like to carry a picture and a few words in the January issue to brighten up the New Year.

Grand knitwear fair

Painswick Conservatives

Famous Brands - Discontinued Lines/Colours and a Coffee Morning
Today, Saturday 4th November 10.00am to 3.00pm at
Painswick Centre.

Admission £1 Everyone welcome! Do come along!

Beacon subscribers

21st October 2006	2006-2007	2005-2006
New or renewed after lapsing	144	116
Renewed from last year	495	479
Total including postal	639	595
Painswick village dwellings	1057	1057
Subscribing households	557	414
Percentage subscribing	53%	40%

Gloucester Choral Society

On Saturday 18th November the Society will be performing Brahms' German Requiem with soloists Ruth Holton and Alex Ashworth.

Brahms compiled the texts for his Requiem from his own copy of the Bible. This gave him the freedom to express his own thoughts and feelings on the ultimate fate of mankind and the music is deeply moving. Also in the programme, Robert Houssart will be performing Guilman's Symphony No.1 for organ and orchestra, which is the Regency Sinfonia, and the conductor is Andrew Nethsingha.

A special inclusive offer including transport is available to Painswick area residents. A Beavis coach will be waiting at 6.30pm in Stamages car park for departure at 6.45pm, returning at about 10.00pm.

Tickets are £22 (front nave) or £17.50 (rear nave), inclusive of discounted seat prices and coach fare.

To use this service, please send a cheque (made out to Gloucester Choral Society) to Gordon Owen (Treasurer) at Kemps Orchard, Kemps Lane, Painswick, GL6 6YB, providing your name, address, contact 'phone number and stamped addressed envelope.

The Society's Christmas "Messiah" is on Saturday 9th December and is a key part of the Cathedral's approach to Christmas and an exciting team of young soloists has been engaged. The Regency Sinfonia and Gloucester Choral Society is conducted by Andrew Nethsingha.

Gordon Owen 812841

Horsfall House presents
a concert tribute to
Douglas Smith

Cheltenham Symphony Orchestra

Conductor - David Curtis
Piano - Kerry Beaumont

at

The Priory in Leonard Stanley

on

Saturday 11th November at
7.30pm

Beethoven:

Overture Coriolanus

Mozart:

Piano Concerto in A, K488

Beethoven:

Symphony No.2

*Tickets £12.00 in advance, or
inclusive of coach from Stam-
ages car park at 7.00pm £15.00
by prior booking only,
from Anne Smith on 812427*

Traditional or 'green' funerals

Tailored to reflect the life of the
person who died.

Any enquiry welcome.

Family Tree Funeral Company

The Old Painswick Inn, Stroud

Phone 01453 767 769

www.familytreefunerals.co.uk

Painswick's Senior Moments

A Painswick resident, ninety next year, and her husband, drove recently to stay for what proved to be a wet weekend with an old friend in Worthing. The windscreen wipers stopped functioning but it was impractical to get the fault rectified then. However, it meant speedy drives out when it was dry.

A successful shop and lunch for the three friends, in a town twenty miles away, was followed by a return to the car park. Husband and friend settled in the front seats. Our heroine finished stowing the shopping and handbag and shut the car boot.

The car drove off. A few minutes later the friend spoke to the back seat passenger not turning her head round due to a painful neck, but no answer so she told husband that she must be asleep. Back almost in Worthing they stopped for newspapers. The friend asked our heroine if there was anything she wanted. Only then did they realise the back seat was empty.

The total journey, to and from the car park took an hour, during which time our heroine stood penniless and abandoned. Most fortunately for the husband's further driving the round trip it still wasn't raining!

We would welcome other true stories. Ed.

They believe in killing two birds with one stone at The Croft!

Children in Class 5 were challenged to develop their skills in writing poetry and to learn about micro-organisms. A variety of poetry forms were chosen by the children, and here is a small selection:

Micro-organism

My small little body means that it is very hard to see me,
I can make people ill and poorly.
Colds that make people cough are made by us,
Running around in your body we make things happen to you,
Out and about, we're everywhere, even though you can't see us.

Our small little bodies mean that we can go anywhere,
Racing about we fill every nook and cranny.
Give us a chance and we'll soon be famous.
Advance to our world by looking through a microscope,
Nothing can stop us because we're so small.
If you don't know, we can be a disease, a virus, fungi,
Scientists really do love us,
Micro-organisms are just so cool, it's only fair for us to rule.

Harriet Green Yr 6

Micro-organisms are small
In fact they are very tiny
Curling around your body
Really they are still
On and on they scatter
On and off your body
Rushing in your throat
Growing and multiplying
About their habitat
Not everyone can see them
Invisible to the naked eye
Single celled living organisms
Micro-organisms are everywhere

Michael Jones Yr 6



Parent Teacher Association

The committee members recruited so far for this year are:

- John Dickinson Chair
- Susie Eady Vice Chair
- Dave Carlile Treasurer
- Della Gould Secretary
- Clare Gamble
- Victoria Elvidge
- Julia Churchley
- Helen Stamp
- Jo Weatherall (Playgroup Rep)

In addition, Jamie Gately has taken on responsibility for the pool and Alison Bullingham for the 100 club.

House Captains

Congratulations to this term's house captains;

- BEACON: Adam Christmas
- JUNIPER: Amy Cox
- RUDGE: Katie Saunders

School Council

The school council committee for this year is:

- Chair: Millie Stone
- Secretary: Kit Kirby
- Treasurer: Rory Sanderson

The children elected to serve on the School Council until Christmas are:

- Year 6: Harriet Green and Douglas Fair
 - Year 5: Edward Gamble and Evie Whittaker
 - Year 4: Holly Perris and Liam Franklin
 - Year 3: Dominic Perris and Cara Cox
 - Year 2: Florence Simpson and Max Murray
- The Year 2 reps will represent all of the infants.

Fungus Limerick

There once was a fungus called Pete
Who chose to live on some meat
The meat went old
Pete grew cold
And moved to live on some feet.

Kate Davies Yr 6

A very tiny living thing,
Smaller than a dot.
Useful or dangerous,
Who can tell?

Harmful.
Disease.
Flu.
Illness and tooth decay.

Useful.
Helpful.
Bread.
Cheese and yeast.

Be sensible with hygiene,
Always wash your hands.
Don't sneeze or cough,
Or friends will have had enough.

Chloe Needham Yr 5

Governing Body

The governing body this year comprises:

- LEA governors
- Mr Chris Hall (Chair)
- The Revd John Longuet Higgins
- The Revd Heather Whyte

- Community governors
- Mr John West
- Mr Martin Slinger
- Mr Tony Urbani

- Parent governors
- Mrs Delyth Allen
- Mr Dylan Davies (Vice Chair)
- Mrs Victoria Elvidge
- Mr Rupert Holmes
- Mr David Perry

- Staff governors
- Mr Gareth Lewis (teaching staff)
- Mrs Sue Rudd (non-teaching staff)
- Mrs Janet Hoyle (Headteacher)



The school year and eleven of years. It is good the new ch...
The Macmillan Co...
pictured here), was att...
many of you to school. V...
diseases
We are very lucky to ha...
This provided new comput...
we offer our children. If yo...

This year we are bringing...
range of people into scho...
include dance workshop...
in science and architect...

If you would like...
come you. You co...
to help childre...
with garde...
small

Tops and Bottoms
reliable window cleaning
local references

Philip Lines
07768 110615

THE FALCON INN
16th Century Coaching Inn

CHRISTMAS and NEW YEAR'S EVE
Reservations are now being taken for pre-Christmas and Christmas Day dinners or private parties in Ostlers Function Room.
Also for New Year's Eve special buffet.
Please contact Antony or Jolka
01452 814222

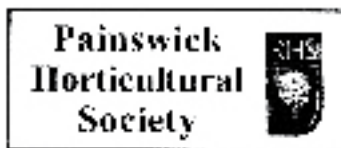
Mrs Hoyle writes:

Croft has had an excellent start to the new year, with fifteen new reception children joining us other children who have come to the school into higher to see our numbers rising again and to see how quickly all children have become established in their new school. Coffee Morning, so excellently organised by Class 4 (some pupils attended by 296 people and raised £407. It was good to welcome so We have also raised £137 for charities working in the area of genetic by wearing jeans to school on 'Jeans for Genes' day We have an excellent PTA, who last year raised over £8,000 for the school. ers, equipment and coach trips which made a huge difference to what you raised money by abseiling, or sponsored others, half of your money came to the school. We are very grateful. g added excitement and interest to our curriculum by inviting a whole school to give children practical experiences to help them learn. These s, writers, story tellers, musicians and artists as well as workshops nature. These opportunities are funded by the school and the PTA in partnership. to get to know the school better, we would be delighted to wel-ould be particularly helpful by coming into school regularly en with reading. This year we also need some expert help ening and growing vegetables. If you could give up a amount of time weekly or fortnightly later on in the school year, we would love to hear from you.



Nothing seedy

Summing up our October meeting in two words 'planting' and 'departing' seemed appropriate. Firstly David Osborne of 'Simply Tulips' brought an excellent selection of tulip bulbs for members to purchase at discounted prices. Our seed order secretary Harold Wood produced this year's DTBrown's seed catalogues for our bulk order, also at greatly reduced prices!



Local speaker Barbara Drake was our courier for our 'departure' to the Outer Hebrides for a glimpse of the flora and fauna of these far away islands, although flying time from England can be as little as two hours.

Barbara's slides, taken in July, revealed a tundra-like landscape devoid of trees, but with many areas of marsh and wind-blown shell sand carpeted by beautiful aromatic wild flowers providing excellent natural cattle and sheep pasture and a fine habitat for birds such as corn crakes, red shank and oyster catchers. Deer and rabbits seemed to thrive, also making life difficult for gardeners.

We saw the islands at their least hostile, but a memorial to a tragic shipwreck and amazing evidence of hurricane damage revealed that gale-force winds rule. No life here for the faint hearted.

We now eagerly await the visit on 8th November of Barbara Pollard from the Abbey House Gardens, Malmesbury. Following her 'exposure' last year on TV's 'The Naked Gardeners' there is much speculation as to what she will wear. Let's hope that the present mild weather continues!

Philip Berry



Party Event Planning
 01452 812808
 partyplates@hotmail.com
 3 St Mary's Mead · Painswick · Glos · GL6 6UQ

Party Plates

- CHINA • SERVING FLATS •
- CUTLERY • DIRTY RETURNS •
- DELIVERY & COLLECTION •
- GLASSWARE •

price clavis
 CHARTERED ACCOUNTANTS

All Taxation & Accountancy Needs

We're here to help. Forward thinking professionals with old fashioned values on service and quality.

Tel: 812491 www.priceclavis.co.uk

The Old Baptist Chapel, New Street

Horne & Kilmister Ltd

General builders & stonemasons

'The complete building service'

- Extensions, renovations & newbuild
- Garages
- Roofing
- Hard landscaping

Tel: 01452 812760 or 01452 814416
 Fax: 01452 814416

Machu Picchu and the Alzheimer's Society

Many readers will remember **Gay Seguro** who resided here, but retired from working as a District Nurse in the Stroud area about two years ago. Gay moved to Berkshire but writes to tell us that she is planning a very special trip back to Painswick for Saturday 9th December.

The meeting room above the library has been booked, and the day will be one for raising funds for the Alzheimer's Society.

On sale will be her collection of paintings by local artists, local history books, double knitting wool from her own

alzheimer's association

Shetland sheep, evening dresses, and good quality bric-a-brac.

Gay, as energetic as ever, and her daughter Heidi have decided to take the challenge of walking the Inca Trail in Peru, to Machu Picchu in aid of the Alzheimer's Society. In letting the Beacon know of her resolve, Gay said, "Both in my personal and professional life I have encountered too many people with dementia, and realise the necessity to raise funds to relieve carers and for more research".

We are pleased to respond with this modest effort at publicising the event and its motivation. Please make a note in your diaries!



Remarkable sculpture

Strolled down Withymead recently? Stepped aside to appreciate the tranquillity of the garden surrounding the Quaker Meeting House?

The diversion is strongly commended as a sculpture by local artist Fiona Meadley has recently been erected there. Capturing this imaginative picture here understates its significance.

We asked Fiona where her inspiration came from and she said it started with the glass fruit. "I wanted to make something that symbolised the gaining of wisdom from our perception and experience. So the fruit have the shapes of eyes and ears and mouth. Being made of glass, they reflect the light and they also mirror the

world around them. Having made the fruit, I needed a tree to hang them from. Then the tree looked bare and I decided it needed leaves. The process of making it was like nature working in reverse!"

Called "Tree of Hope", the sculpture was part of an exhibition earlier in the year, on the theme of "War & Peace". Visitors were invited to write promises on the copper leaves, and some are still visible.



Christmas gifts

You are invited to a Christmas Sale and Coffee Morning on Tuesday 14th November at Lindsay Gardiner's 10.30am to 1.00pm

Sheephouse, Stepping Stone Lane, Painswick

Christmas stock from CENTRE Christian Bookshop books, cards, gifts, fairly traded foods, calendars, candles, etc.
ALL WELCOME TO BROWSE AND CHOOSE AT LEISURE

Lindsay Gardiner 814282

J.P. Wheeler
High Quality
Decorating
Services
For a
Free Quote
Tel/Fax
01452 740828

COLIN NASH
Contractor
Hedgecutting - Fencing - Topping etc
(With tractor or Quadbike)
Holcombe Farm, Painswick,
Stroud, GL6 8RG
01452 813104
or **07768 912546**

Stroud Alarms
Electronic Security
Est: 1985

Your local friendly professional security provider

18 years high-level security experience
Domestic & commercial alarm systems
Servicing / Maintenance / Repair
Existing security systems or upgrades
CCTV - Access control / Door entry
Inspectorate approved installer SSAIB
Free friendly consultancy

Tel: 01453 750519
Email: www.stroud-alarms.co.uk

SSAIB Security systems inspection board

The Club - into November

We go into November carrying over some hilarious happenings in October. First there was Adele getting us back to our respective childhoods with paper and pencils or crayons, responding to the challenge to draw a house and a person on horseback. Few of us, to our chagrin, had made any progress in art since those days of old, yes the same old rectangular houses with square windows, smoking chimneys (remember them!) and the path to the front door, surreptitiously sneaking a look to see whether the person next to you was doing any better than you! Then, being amazed, and humiliated, by the astonishing achievements of a child of six years responding to the same challenge. All in the light of understanding how helpful drawing can be to children who experience communication difficulties in expressing themselves in speech – quite an eye opener. It made one appreciate the valuable contribution that people like Adele make to the improvement of the lives of such children and of their parents.

Then we had a real ‘stand-up comedienne’ – Susan Marshfield, whose one women show “Bare foot to Buckingham Palace” had us in stitches and is a must if you have not seen and heard her. A raconteur par excellence, she took us through her attendance at a garden party at Buck House – first the letter of being minded to invite, then the actual letter from the Lord Chamberlain – delivered by the local Postman Pat with the X-ray eyes, the shopping with hubby Jack beforehand, the journey up, the queue, the walk across the forecourt chippings, the lawn, the sandwiches, the chocolate cake, and then

THE Friday CLUB

the royals. But what about the bare feet I wondered?

Well, it turned out that she went twice. The second time with the temperature nearing the 40°C's in a new pair of tights and new shoes in a car without air conditioning and a know-all driver (not hubby Jack) in London without the “knowledge”.

Of course she took her shoes off in the car, didn't she! Now, do you know what a perspiring body does to a lady in new unwashed tights? No. Well the sweat drains down the inside of the tights, accumulates around the feet and gives them the equivalent of a slow cooker's casseroles for a few hours, according to the ‘seen it all before’ dragon in the St. John's ambulance tent on the Palace lawn. Forcing them back into the shoes is obviously the equivalent of squeezing a lobster into a winkle shell. The bloody consequences that followed from crossing traffic to the Palace, even with the help of hubby and an understanding policeman, and then traversing the chippings covered forecourt to gain the relief of bare feet on the lawn, does not bear thinking about, but when described by a master story teller with all the actions, facial and eye rolling contortions of the actuality, it was eye-wateringly hilarious and I am still laughing at her mimed re-creations.

November begins with Club President Pat Daly's tea party – what a most delightful innovation – on 3rd November. This will follow our AGM, which starts at 1.45p.m.

The tentative planning for an outing to Cribbs Causeway for shopping in November has had to be cancelled. Please see the separate panel below about New Year possibilities.

Man Friday

Cribbs coach trip ? invitation

There are known to be some people interested in visiting the shopping mall at Cribbs Causeway, a trip the Friday Club has occasionally arranged in the past - with others appreciating the opportunity of joining in.

They are looking at arranging a visit to catch some of the tail end of the New Year sales, maybe on a Thursday late in January or early February. The coach return fare would, of course, be return and likely to be under £10.00.

A civilised departure time of around 10.00am is in mind, arriving just right for those who wish to get coffee within the mall, before leaving about 3.00pm for the return to Painswick.

If the Club are to go ahead they need to know who might be interested. If you think this would be a leisurely trip for you please **get in touch with Ann Williams on 812344 before the end of November** and she will then set about the planning.



Peter Ely
Plumbing & Heating
 General Plumbing
 Central Heating (oil & Gas)
 AGA Servicing, Solar Hot Water

CORGI Registered
OFTEC Registered

Telephone 01285 821007
 Mobile 07779 099320
 Four Winds, Whiteway, Stroud, Glos

TRAVELSCOPE

Just Friends
 Escorted Holidays For Single Travellers
 • No single supplements - guaranteed
 • 24-hour helpline
 Quote Code: PBEJFR

European River Cruises
 • Choice of 25 excellent itineraries
 • Comfortable cabins - with or without balconies
 • Fully escorted by a 'Tour Manager'
 Quote Code: PBEHGD

Ocean Cruise Collection
 • Cruise lines from the UK - NO VISAS
 • Complimentary coach travel from selected
 pick-up points in the UK - car parking at port
 Quote Code: PBEUCD

Europe - Holidays By Air
 • 21 departure times from Bristol & Birmingham
 • Fully escorted hotel accommodation
 • Choice of 44 fantastic itineraries
 Quote Code: PBEHGD

For a free brochure/DVD or to book call:
0870 380 3333

ALOE VERA

Come and learn about the fantastic properties of Aloe Vera and see the wide range of nutritional and eauty products made from this amazing plant.

Buy your Xmas presents or treat yourself to a healthier lifestyle!
Pennington Cottage Sheepscombe
 (opposite Church car park)
 Just call in
 – feel free to bring a friend!
NOVEMBER 11th 10am – 4pm

Julian Slade remembered

The afternoon of Wednesday October 4th was a warm, sunny, 'Salad Days' sort of afternoon in London, exactly perfect for the celebration of the life of Julian Slade, which was held at St Paul's, Covent Garden, the 'Actor's Church'. Julian, who died in June after a long illness, spent his formative years here in Painswick, becoming one of the legendary Lucy Hyett's Painswick Players. A significant composer for musical theatre, TV and films for over forty years, he is still best remembered for his sparkling hit 1954 musical Salad Days.

It was 'standing room only' in the Church, which was packed with relatives, friends and many well-known faces from the theatrical world. From Painswick, Diana Barclay, who grew up with Julian and appeared with him in several Painswick Players productions in the forties and early fifties, attended the service - along with husband Christopher - as friends of the family, whilst Pauline Foreman and Jack Burgess represented the Players.

The service was conducted by the Rector of St Paul's, the Reverend Simon Grigg and included a tribute from Julian's brother, Adrian, which featured anecdotes from Julian's early life, including the prominent part which Painswick played in developing his theatrical talents. Christopher Biggins, representing Sir Cameron Mackintosh (who was in New York), recalled how inspirational Julian had been to so many in the world of British musical theatre and the vital supportive role he had played in the early days of Sir Cameron's career as a producer.

There followed an eclectic mix of music, poetry and prose, including performances of many of Julian's best known songs and readings from (amongst others) Julian Sands, Jane Wenham and Jeremy Irons. In a 'Final Memory', Lisa Bowerman gave a poignant and beautifully sung rendition of 'We said we wouldn't look back' from Salad Days. Many Painswickians will remember Lisa fondly from an evening ten years ago when Julian accompanied her in a concert in St Mary's Churchrooms to help re-launch Painswick Players (or PaDS as it then was) after a couple of years 'resting'.

Afterwards, at the invitation of Sir Cameron Mackintosh, the congregation strolled along to (as he put it) 'one of my theatres' - the Prince of Wales Theatre, Leicester Square - for a reception. Here, in best West End tradition, the champagne flowed and the gathering was treated to a showing of a special performance of Julian's music staged by Sir Cameron and a distinguished cast at the Theatre Royal Bristol in 2004 to mark the fiftieth anniversary of the opening of 'Salad Days' in Bristol.

All agreed it was an unforgettable day for a memorable occasion.

JB



You once met . .

We would like to create a reserve of articles, between 200 and 400 words in length, created by readers who have met someone of distinction at some time in their lives.

Most of us have 'bumped into' or actually crossed paths with a personality well known in one sphere or another, and it would be delightful if we could publish your recollection.

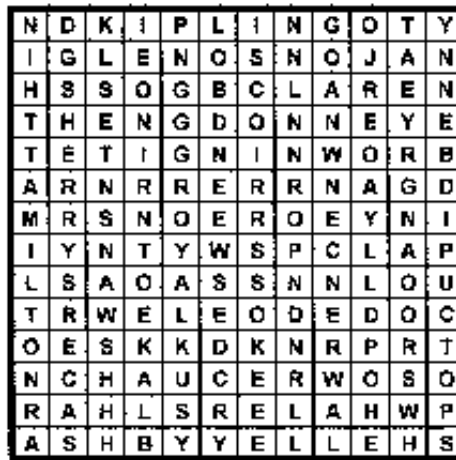
Just let us know if you could jot such an experience down and we will let you have illustrations of layout/style you may care to copy.

In anticipation - Thanks.

Ed



Nineteen British poets concealed this month. Can you find them?



Last month we tried to attract those with a sweet tooth to tackle the Word-Search - while munching a bar of chocolate - of course. Did you find the 17 words (and flavours) associated with this delicacy, or the one repeated?

- BLACK MAGIC
- BOOST
- CARAMEL
- COCOA
- CRÈME EGG
- DOUBLE DECKER
- EASTER EGGS
- FLAKE
- FRUIT AND NUT
- HEROES x 2
- MALTESERS
- MARS BAR
- MILK TRAY
- PRALINE
- ROLO
- ROSES
- TRUFFLES



**Montgomery
Lettings &
Management**

01453 756100


**PAINSWICK
ELECTRICAL SERVICES**

- ✓ 40 years' experience
- ✓ 24-hour Emergency Service
- ✓ All electrical work undertaken
- ✓ Inspection & Testing
- ✓ Free Estimates
- ✓ PART P REGISTERED



**Mike Turner: 01452 812659
01453 758342 / 07850 784899**

**COMPLETE LANDSCAPE
FROM START TO FINISH**



3 Firwood Drive,
Tuffley, Gloucester
GL4 0AB

Floribunda
ADRIAN HARRIS

01452 527647

At Last! The 1906 Centenary Music Hall

I was queuing patiently, ten-deep, in our (apparently) under-used Lloyds bank the other day, when I overheard someone remark, 'What a good Beacon it is this month: none of the usual rubbish.' I suddenly realised that I had forgotten to send in the Painswick Players piece. Or rather, not really forgotten: it was just that I've been going through something of a Moving Experience. The Most Organised One was, of course, thoroughly at home (so to speak) with all this movement and busily organised anything and anyone that moved or looked like moving. I just kept my head down inside my allotted packing case and prayed for it all to end.

Anyway, the upshot was that I failed to tell you about our forthcoming Centenary Music Hall (Painswick Centre, 7th, 8th, 9th December) which is being staged to celebrate 100 years of the Painswick Institute (or Centre, if you must). The Centenary Music Hall will be preceded by an absolutely fairly authentic re-enactment of the Grand Opening Ceremony by Mrs Frances Sarah Williams (whose gift to Painswick, the Institute was) and involve such historic Painswickians as the then Vicar of Painswick, the Revd William Seddon (exceptionally authentically played by our present Revd), Sir Francis & Miss Lucy Hyett and the mysterious Mr Worgan (of whom, more later).

The Centenary Music Hall itself will contain many Magically Melodious Moments, assorted Scintillating Sketches and any number of Amazing Acts. There will be Titillating Turns by the Painswick Tappers (particularly their Saucy 'Bathing Belles' routine). The Ancient Society of Painswick Youths will perform most appealingly with the other sort of bells. And there will be Fantastic Feats from von Finkelstein's Fabulous Freak-show & Circus which will culminate in the firing of a small boy from a mighty cannon. Or - if the pyrotechnics during rehearsals are anything to go by - four small boys: one for each performance (three evenings and a Saturday matinee)!

Tickets for the three evening performances (starting 7.30 pm) cost £10.00 - or £6.00 for children - and include a ploughman's supper. The Saturday matinee starts at 2.30pm with tickets at £7.50 - or £4.00 for children - but with no food: apparently ploughmen aren't hungry at that time of day... after all, who's ever heard of a 'ploughman's lunch'?

Oh yes, and there will be prizes for the Best (Edwardian) Dressed members of the audience. So get into the Edwardian spirit, get your tickets from The Chairman or The Shetland Shop, and get dressed up!

Now, have I forgotten anything...

News from the Centre

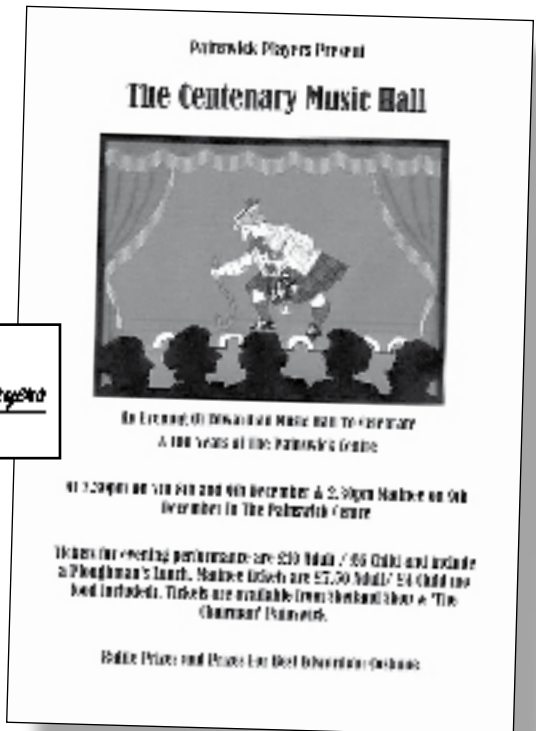
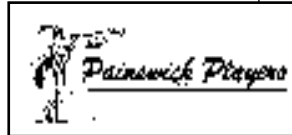
The next event to be organised by the Trustees will be the Children's Christmas Party, to be held in the Hall on Sunday 17th December at 3.00pm. Tickets will be on sale, £2.00 each, at the Shetland Shop, from the middle of November. The number of tickets for sale will be limited to 60, and the age range will be from 5 to 8 years. The Children's Christmas Party will be the second event of the centenary year, immediately following the Edwardian Music Hall.

The Trustees have booked that much acclaimed (by his mother!) magician, Mr Fizz. Gary Cope will also be coming along with 'SKY', his Lanner Falcon. Three Counties are providing not one, but two 'chocolate fountains', with lots of fruit & items to dip with!

In order to keep the price of the tickets as low as possible the Trustees have approached a number of companies in the Stroud area inviting them to make a small contribution towards the cost of the party. So far we have raised £385, against a target of £400. We have received donations, either in the form of vouchers or cash, from

Lloydspharmacy, ASDA, Clarke's, Morrison's, Sainsbury's, Wilkinson's, Blooms, Alliance Pharmacy, Yorke Construction and Waitrose. We have also received three soft toys from Laura Ashley and a personal cheque from Sarah Weller, CEO of Argos Retail Group.

Three new Trustees were welcomed at the AGM on 16th October, Sue London, David Allott and Jacek Wolowiec, (known to friends as Woll!); Mike Breeze and Paul Sparks retire. Paul did a fantastic job of running the bar (and the gross



Painswick Centre

margin he achieved will forever live in The Guinness Book of Records), and Mike gave us fantastic support at all our fund-raising events.

The face of Painswick is changing, with the closure of the Painswick branch of LloydsTSB, the uncertain future of the Library and the likely closure of our Post Office. The cost of maintaining very old buildings such as the Painswick Centre is a never ending vigil. This month, out of the blue, came essential repairs to the guttering, a breakdown of the heating system and the enforcement of new fire regulations. Next month we will incur the cost of redecorating the Hall.

However, the difference between the Centre and the other three buildings is that it is owned by you, the people of Painswick. So, it's a simple case of 'use it or lose it'. Unless the Centre can generate the funds to support itself then it will not survive. So do use it for your own gatherings and please support the various events the Trustees stage to try and entertain you.

Ralph Drew

Wick Street Security
Locksmith & Secure Solutions

Moved Home or Office? Who's Got Keys?

All types of security equipment supplied & fitted to insurance standards.
Lock opening service & period lock restoration.

Tel: 01452 812201 Mob: 07812 540178
Email: info@wickstreetsecurity.com

GLOUCESTER Florists

Tel: 01452 303 690
Tel: 01452 303 890

Professional Florists
Wedding & Traditional Design
Floral Displays for all Occasions
Local Markets & Wholesale Suppliers
Reliable & Value for Money

100-102 The Arcade, Gloucester, GL1 2JF
www.glocestersflorists.co.uk

Tennis

New Pavilion Opened

With finishing touches completed the new pavilion at Painswick Tennis Club was opened on Sunday 1st October in front of many guests and members. Catering for members of all ages the ribbon was cut by one of the youngest playing members, Lara Fair, and one of the oldest, Ken Morton Lloyd. The Club truly caters for 8 to 80 and all playing abilities.

Prior to the opening ceremony awards were presented to the winners and runners-up from the Club Junior Championship which had been held during the preceding weeks. Many of these players had featured strongly in the County Closed competition this year. Opening the proceedings John Courts, President, welcomed many guests including Cllr. Chas Fellows, Leader of Stroud District Council, together with representatives from Gloucestershire Playing Fields Association and Painswick Parish Council all of which had provided financial support. He thanked Roger Stewart, a Club member, who had project managed the scheme from start to finish and expressed his appreciation for the pavilion clock which had been presented by Hamptons International and to the family of longstanding Club member Ann Brown for their kindness in providing the weather vane in her memory.

The Club has a large playing membership and a strong coaching programme with particular focus on the development of juniors. The new facility provides an excellent base in support of these activities and for the future. Four courts have also recently been resurfaced and plans are already being considered for two additional floodlit courts. Painswick Tennis Club has just been recognised as an LTC County Accredited Performance Club, one of only three in the County. This adds to its established Mini Tennis Accreditation.

Club Annual Tournament

Immediately following the official opening of the new pavilion the Annual Club Tournament finals were held. Many of those attending the pavilion opening stayed to watch the matches and were rewarded by a very high standard of tennis. The tournament results were as follows:-
Ladies Singles Winner: Lucy Moir. Runner-up: Annabel Sidwell.
Men's Singles Winner: Paul Duncliffe. Runner-up: Tom Unwin.



Our photograph, taken by Michael Hall, shows in the foreground from left to right, Lorraine Ristic (Head Coach), David Reid, Sophie Barnett, Lucy Moir, Annabel Sidwell, Lara Fair, James Barnett, Dougie Fair, Callum Gordon and Craig Stock (Coach). In the background are some of the members and guests who attended the pavilion opening.

Ladies Doubles Winners: Lucy Moir & Sarah Thomas.
Runners-up: Alicia Barnett & Megan Horder.
Men's Doubles Winners: James Barnett & David Reed.
Runners-up: Nigel Barnett & Robin Hall.

Painswick Junior Tennis Tournament

Mini Tennis Winner: Lara Fair. Runner-up: Callum Gordon.
Under 10s Winner: Dougie Fair. Runner-up: Sophie Barnett.
Under 14s Girls Winner: Alicia Barnett. Runner-up: Megan Horder.
Under 14s Boys Winner: Ed Williams. Runner-up: Dan Omnes.
Under 18s Girls Winner: Lucy Moir. Runner-up: Annabel Sidwell.
Under 18s Boys Winner: James Barnett. Runner-up: David Reid.

Environmentally Sensitive
Tree Surgery
Local family business
John, Clare & Zeb
Fully Insured
20 years experience
Painswick (01452) 812709
See Our Website
www.landcareservices.biz

S.P.GYDE
Carpenter & Joiner
City & Guilds

Purpose made Joinery
General Building Services

Tel: 01452 812587
Mob: 07768 173726

MICHAEL NYE
Fine Woodworking

Beautiful furniture, kitchens, cup-boards, doors, windows, gates
musical instruments

YOUR IDEAS BECOME REALITY
Telephone 01452 814372

Rugby

The tide turns for Painswick

After a poor start to the season Painswick got back to winning ways with a double success.

First, playing in the EDF (formerly Powergen) Vase away at Oxford on 7th October the first fifteen achieved an outstanding victory by 53 points to 17. Not to be outdone, on the same day the United overcame the Berry Hill third fifteen by 54 points to 25.

October continued to be a successful month for the Cherry and Whites as in another away fixture the first fifteen recorded their first league win, beating Longlevens by 27 points to 3.

Last Saturday Painswick travelled to the North Bristol club for the second round EDF Vase match. Although Painswick played well they went down by 39 points to nil with the home side's kicker scoring 19 of the North Bristol points.

There was disappointment too for Painswick United who were scheduled to play Cainscross in the Stroud Junior Combination Cup at Broadham Fields. Much to the supporters' dismay the match could not be played as Painswick were unable to raise a team. Some good news for the Cherry and Whites is that they have organised a mini-bus for all their away games.

October results [(L) indicates league match, (M) Merit Table].

Sat 7th. (EDF Cup). Oxford 1st XV 17 Painswick 1st XV 53.
Painswick United 54 Berry Hill 3rd XV 25.
Sat 14th. (L) Painswick 1st XV 12 Drybrook 1st XV 34.
(M) Coney Hill 3rd XV 52 Painswick United 19
Sat 21st. (L) Longlevens 1st XV 3 Painswick 1st XV 27.
(M) Painswick United v Cheltenham Sabres. Not played.
Sat 28th. (EDF Cup). North Bristol 1st XV 30 Painswick 1st XV 0.
Stroud Junior Combination Cup. Painswick United v Cainscross 2nd XV.
Not played.

Fixtures

Sat 4 Nov. (L) Painswick 1st XV v Old Colstonians 1st XV.
(M). Painswick United v Gloucester OB 2nd XV.
Sat 11 Nov. (L) Painswick 1st XV v Aretians 1st XV. (M) Painswick United v Stow 2nd XV.
Sat 18 Nov. Painswick 1st XV v Old Centralians 1st XV. Old Centralians 2nd XV v Painswick United.
Sat 25 Nov. (L) Widden OB 1st XV v Painswick 1st XV. (M) Old Patesians 3rd XV v Painswick United.
Sat 2 Dec. Painswick 1st XV v Cirencester 1st XV. (M) Cirencester 2nd XV v Painswick United.
Sat 9 Dec. (L) Painswick 1st XV v Cainscross 1st XV. Painswick United v Cainscross 2nd XV.
Sat 16 Dec. (L) Painswick 1st XV v Aretians 1st XV. (M) Widden OB 2nd XV v Painswick United.



Painswick Under 14s on tour

Pictured above are the Painswick Under14 squad outside the Waitrose store in Stroud resplendent in their new shirts which were donated by the superstore. The boys helped pack shoppers' carrier bags at the store to help raise money for their half-term tour to Toulouse.

THE CHAIRMAN
Antiques & Crafts

a distinctive mix of antiques, unusual hand-crafted gifts and interesting items for the home

The Old Bakery New Street Painswick GL6 6JN
01452 810820
Open Tuesday to Saturday 10am - 5pm

General Building Work
Natural Stone Work
Extensions, Garages etc

A Member of the
Guild of Master
Craftsmen

Richard Twinning & Partner
General Builders
(with over 18 years experience)

Hard landscapes
Dry Stone walling,
Patios, Pointing

Tel: 01452 812086
Mobile: 07899 791659
Fax: 01452 812085

GODDARD'S GARAGE
Cheltenham Road Painswick

- * Full servicing & repair facilities
- * Pre-MOT checks/ MOTs arranged
- * Private hire taxi - local or long distance
- * Petrol/ Diesel/ Tyres/ Exhausts
- * Paraffin/ Coal/ Calor Gas
- * Car valeting

Personal attention for your car

01452 812240

Enterprising women make a difference Rural Women At Work

The Beacon has received information about an opportunity which may be of real interest to women contemplating building their own business enterprise. The organisers pose questions such as:

- Are you a woman running your own business?
- Are you thinking about starting up?
- Are you doubting you can do it?
- Are you working your way up the ladder?

If so the Enterprising Women Make A Difference: Rural Women At Work conference is for you!

With loads of useful information, inspiring speakers, practical skills training and great networking opportunities, a free full day conference is being held on Wednesday 15th November at the Cheltenham Park Hotel.

“Enterprising Women Make A Difference” is celebrating successful examples of women entrepreneurs and highlighting local business women with a positive story to tell. Flourishing Gloucestershire business women will use their expertise and experience to outline best practice and tips for triumph against the odds. Inspiring and aspiring women will mix and mingle, networking to boost confidence, gain support and promote female entrepreneurship in rural areas. The conference offers:

- Expert advice and guidance
- Information on opportunities

- Inspiring women speakers
- Tips and hints
- Excellent platform for networking
- A great day out with good food in lovely surroundings ... and cream cakes!!

The workshops are provided by trained facilitators offering practical skills in finance, networking, how to start up your company, overseas markets, finding customers without spending money, coaching, support for rural businesses and more.

So if you are a woman who is interested in beginning, developing or growing your own business or becoming more influential where you now work find out more or ask for a registration form from Emily on 01242.863863 or emily.jarrott@bgl.co.uk. Places are limited so please register soon.

“Being in control of my own destiny; making a difference; satisfaction of watching my business grow; building successful and lasting relationships; securing the future for me and my family” – these are some of the reasons I have my own business - Sharon Lee Sheather MD, SLS Training (part of the SKILS Group)

The conference is sponsored by the Rural Renaissance Initiative, Business Link Gloucestershire, the European Commission, and the National Alliance of Women’s Organisations.

PROPERTY REPORT for November by Murrays

I thought it was about time to introduce myself properly as the new Manager of the Painswick Office. I am however not new to the area as my parents and I have lived in and around Painswick for the past 25 years so have extensive local knowledge. After a long stint in London I decided that the country lifestyle is for me and joined the family business; and what better place to be than Painswick. It is a pleasure being here and working with such a highly motivated and proactive team.

October has been a very good month for sales of property in and around Painswick and we have seen an increase in valuations and the amount of houses coming on to the market. People are now getting prepared for Christmas but there’s still time to put your property on the market and find something new to move in to before the festive season is upon us. New instructions include a magnificent Grade II listed family

home with large garden and ample parking right in the heart of Painswick, Stoneleigh in Gloucester Street another fantastic Grade II listed property with a beautiful walled Garden, The Little Property a quaint cottage on Vicarage Street, Eversley in Friday Street, Barley Mow on the Slad Road, Coppins in Sheepscombe, New Inn House at The Camp, Willowmead and Perryway in Upton St Leonards.

Properties under offer include Beggars Roost on Golf Course Road, Museum Cottage on Vicarage Street, Woodlands Farm near Churchdown, Dean Rise on Stroud Road, Angels Roost on Vicarage Street, Carousel in Slad, Cotswold Villa on Gloucester Street, 3 Berry Close and Hornbeams in Slad. Recently sold properties are Rose Cottage, Cranham, 14 Gloucester Rd, 16 Canton Acre, 6 Berry Close and Edge

Cottage at Edge. If you are considering a move in the near future, I would be delighted to advise on the valuation and selling prospects of your property, please contact the office on 814655, pop



in to see Jennifer or Julia or flag me down if you see me out and about as pictured here!

James Murray, Branch Manager



MURRAYS
INDEPENDENT ESTATE AGENTS

STROUD MINCHINHAMPTON
MAYFAIR LONDON

New Street PAINSWICK
01452 814655
www.murraysestateagents.co.uk



HAMPTONS
INTERNATIONAL

Estate Agents

**A network of over 50 offices,
16 in London 9 International**

The Old Chapel, Bisley Street, Painswick. 01452 812354
The ultimate property [search](http://www.hamptons.co.uk): www.hamptons.co.uk

NOVEMBER

Sat	4	Coffee Morning in aid of Christian Aid Knitwear sale and coffee – Conservative event to 6th Sky Gallery exhibition (<i>See page 7</i>) A concert by The Painswick Singers in aid of The Family Haven charity	Town Hall Painswick Centre Bell Cottage, Friday Street Painswick Centre 7.30pm	10.00am to 12.00noon 10.00am to 3.00pm
Sun	5	Painswick Beacon Conservation Group: Scrub clearing	(Location check 812709)	10.00am to 1.00pm
Mon	6	Austerity Lunch: Hosts – Women's Fellowship	Christ Church Hall	12.00 to 1.15pm
Tue	7	Dog Training Club (Tuesdays) Yoga: Beginners welcome – Tuesdays - contact Emma 01453 840395 Bingo Club Bird Club: Voyage to St Kilda – Helen Williams ARPS	Christ Church Hall Town Hall Ashwell House Town Hall	9.30 to 12.00noon 10.00 to 11.15am 6.30pm 7.30pm
Wed	8	Probus: Talks by Members Women's Fellowship: Arabian Jewellery – Maria Gladstone Horticultural Society: The Abbey Gardens at Malmesbury – Barbara Pollard. Raffle & plant sale Youth Club meeting	Ostlers Room, Falcon Christ Church Hall Town Hall	10.00am 7.30pm 7.30pm
Thu	9	Jolly Stompers Line Dancing: Beginners Experienced beginners – Thursdays Tea Dances – Thursdays	Pavilion, Recreation Field Town Hall	7.00 to 9.00pm 12.00 to 1.00pm 12.30 to 1.30pm
Fri	10	Country Market with coffee available: Fridays Tennis Club Quiz Night	Painswick Centre Town Hall Sports Club, Broadham	2.30 to 4.30pm 10.00am 7.30pm
Sat	11	Sue Ryder Care Coffee Morning Remembrance: Short period of recollection Concert tribute to Douglas Smith (<i>See page 11</i>)	Town Hall War Memorial Leonard Stanley St Mary's Church	9.45am to 12 noon 10.50am 7.30pm 10.50am
Sun	12	Service of Remembrance Directory 2007: closing date for entry changes (<i>See page 5</i>)		
Mon	13	Austerity Lunch: Hosts – Mr & Mrs A Lock	Christ Church Hall	12.00 to 1.15pm
Tue	14	Coffee Morning: Christmas books & gifts from Centre Christian Bookshop, Stroud	Sheephouse	10.30am to 1.00pm
Wed	15	Parish Council Meeting CTAP AGM: Speaker, Bruce Thomson, World Vision - Addis Ababa to Painswick	Town Hall Christ Church Hall	7.30pm 7.30pm
Thu	16	Theatre Club Outing to Cardiff (please note amended time) Fashion Show supporting Horsfall House	The Falcon Painswick Mill Town Hall	10.30am 7.00pm 2.30pm
Fri	17	Friday Club: Meeting Self defence workshop (<i>See page 6</i>) Music Appreciation: La Bohème	Croft School hall Bristol Hippodrome	7.00 to 9.00pm dep: about 5.30pm
Sat	18	Copy dateline for December Beacon Charity Fayre: Christmas cards, gifts, bread, cakes etc. Refreshments and 19th Art Exhibition: Rupert Aker local scenes Gloucester Choral Society: Cathedral (<i>See page 11</i>) Blues Night: Big Joe Lewis	Christ Church Hall Town Hall Stamages car park Painswick Centre	10.30am to 2.30pm 10.00am to 4.30pm 6.30pm
Mon	20	Austerity Lunch: Hostess – June Tuffnell	Christ Church Hall	12.00 to 1.15pm
Tue	21	Local History Society: Social Life around Stroud Circa 1910 – Howard Beard Jazz Evening no entry fee	Croft School Ostlers Room, Falcon Ostlers Room, Falcon Christ Church Hall	7.30pm 8.30pm 10.00am 7.30pm
Wed	22	Probus: M&S - the first 100 years - Mr Peter Illiffe Women's Fellowship: Hatched, matched & dispatched – Michael Campbell		
Sat	25	Annual Mission Bazaar	Church Rooms	11.00am to 2.00pm
Sun	26	Painswick Beacon Conservation Group: Scrub clearing	(Location check 812709)	10.00am to 1.00pm
Mon	27	Austerity Lunch: Hostess – Margaret Hodge	Christ Church Hall	12.00 to 1.15pm
Tue	28	Yew Trees WI: AGM: demonstration & talk on how to make your own Christmas cards – Andrea Linsell	Town Hall	7.30pm
Wed	29	Probus Annual Dinner		
Thu	30	Music Appreciation: Wolfgang Mozart	Cotswold Room, P. Centre	7.30pm

DECEMBER

Fri	1	Friday Club: Flowers for Christmas - Anne Smith	Town Hall	2.30pm
Sat	2	December issue of The Painswick Beacon published The Painswick Singers Carol Concert, in aid of Church funds	Christ Church	7.30pm
Sun	3	Painswick Beacon Conservation Group: Scrub clearing	(Location check 812709)	10.00am to 1.00pm



Mon	4	Austerity Lunch: Hosts – Christ Church Advent Agape – bring a plate of food and a reading or other Advent contribution	Christ Church Hall Christ Church Hall	12.00 to 1.15pm
Tue	5	PCMS: Carols, Wine & Cheese. Proceeds to SOS Childrens Villages	Westmorland House (Kingsmead)	7.30pm
Wed	6	Coach to London: Enquiries 813965/813227 Probus Ostlers Room, Falcon 10.00am	Stamages Car Park	8.30am
Thu	7	until 9th Painswick Players Centenary Music Hall Saturday matinee Cotswold Care Support Group Christmas Dinner	Painswick Centre Painswick Centre	7.30pm 2.30pm 7.00pm
Sat	9	Sale of paintings by local artists; local history books; & D.K. wool etc. in aid of the Alzheimer's Society Jazz night	Library Room	9.00am to 4.00pm
Mon	11	Austerity Lunch: Hosts – Catholic Church	Ostlers Room, Falcon Christ Church Hall	7.30pm 12.00 to 1.15pm
Tue	12	Flower Guild: Wreath and table decoration workshop Yew Trees WI: Christmas Gathering	Town Hall Town Hall	7.30pm
Wed	13	Horticultural Society: Quiz Nite with refreshments	Town Hall	7.30pm
Thu	14	Women's Fellowship: Christmas Lunch Music Appreciation: Christmas Social	Golf Club Cotswold Room	12.30pm 7.15 for 7.30pm
Fri	15	Country Market: main Christmas market Friday Club: Christmas Lunch Blues Night: The Eddie Martin Band	Town Hall tba Painswick Centre	10.00am tba
Sun	17	Children's Party - including magician (See p 17)	Painswick Centre	3.00pm
Wed	20	Women's Fellowship Carol Service	Ashwell House	7.30pm
Fri	22	Country Market: small pre-Christmas market	Town Hall	10.00am
Sun	31	Painswick Beacon Conservation Group: Scrub clearing	(Location check 812709)	10.00am to 1.00pm

2007 JANUARY

Wed	10	Probus: Everyman Theatre – Ms Sarah Hasman Horticultural Society: English Garden History - Barbara Drake	Ostlers Room, Falcon Town Hall	10.00am 2.30pm
Fri	12	Country Market Re-opens	Town Hall	10.00am
Tue	16	Local History Society: The poor are always with us	Croft School	7.30pm
Wed	24	Probus: The Sinister World – Mr P Petrie	Ostlers Room, Falcon	10.00am

FEBRUARY

Thu	1	Cotswold Care Support Group meeting	Ashwell House	2.30pm
Wed	7	Probus: Well, Whatever Next – Mr R Shotter	Ostlers Room, Falcon	10.00am
Fri	9	Tennis Club/Badminton Club Barn Dance with The Downfielders Music Appreciation Group: Concert trip to Symphony Hall	Sports Club, Broadham	7.30pm
Wed	14	Horticultural Society: RHS Garden at Harlow Carr - Maurice Everett. Plant Sale	Stamages car park Town Hall	5.00pm (tba) 2.30pm
Tue	20	Bird Club: Birds & other wild life of the Forest of Dean, Lesbos and the Galapagos – Terry Wall Local History Society: A David Archard/Helen Briggs Production	Town Hall Croft School	2.00pm 7.30pm
Wed	21	Probus: Drug Awareness & Education – Mr A Wood	Ostlers Room, Falcon	10.00am

MARCH

Thu	1	Cotswold Care Support Group meeting	Ashwell House	2.30pm
Wed	7	Probus: Cider with Rosie Country – Mr J Fern	Ostlers Room, Falcon	10.00am
Sat	11	Village Quiz Painswick Centre		
Wed	14	Horticultural Society: Pruning – Sue Gibson	Town Hall	7.30pm
Tue	20	Local History Society: Hugh Conway-Jones – Gloucester Docks	Croft School	7.30pm
Sat	24	Music Society Concert: Felicity Lott & Graham Jones	St Mary's Church	3.00pm
Tue	27	Bird Club: The Wildlife of Trinidad & Tobago - Bob Axworthy	Town Hall	7.30pm
Wed	28	Horticultural Society: Outings booking morning	Church Rooms	10.00am to 12 noon

APRIL

Wed	4	Flower Guild: Cookery demonstration by Rob Rees		
Thu	5	Cotswold Care Support Group meeting	Ashwell House	2.30pm
Wed	11	Horticultural Society: British poisonous plants - Michael Leech. Plant sale	Town Hall	7.30pm
Sat	14	Music Society Concert: Daniel de Borah	St Mary's Church	3.00pm
Tue	17	Local History Society: Research Evening	Croft School	7.30pm
Sat	28	Music Society Concert: Kungsbacka Trio	St Mary's Church	3.00pm

MAY

Thu	3	Cotswold Care Support Group meeting	Ashwell House	2.30pm
-----	---	-------------------------------------	---------------	--------



NEW APPLICATIONS

DAMSELLS FARM Refurbishment of ancillary building.
ALLWAYS, KINGS MEAD Erection of a 2 storey extension.
ABBEY BARN, SLAD LANE, SLAD Erection of garden shed and greenhouse
6 ST MARY'S MEAD Works to horse chestnut
COURT COTTAGE, HALE LANE Replacement windows (Resubmission of 06/1736/LBC)

REVISED PLANS

MIRADOR, CHELTENHAM ROAD Replacement dwelling. Main changes: Reduced size of dwelling.
HAMBUTTS COTTAGE, CHURCHILL WAY Erection of 2 storey side extension & garage. Main changes: Proposed bedroom & bathroom windows on rear elevation to be obscurely glazed & fixed shut. Insertion of 2 additional conservation skylights
ALLWAYS, KINGS MEAD Erection of a 2 storey extension. Main changes:

Change position of bedroom window from north elevation to east elevation.

CONSENT

PYLL HOUSE, SHEEPSCOMBE Erection of detached car port and workshop block
MILLFIELDS, THE VATCH, SLAD Erection of block of 2 stables and feed store
GORSELANDS, BACK EDGE LANE, EDGE Resubmission of 06/1161/FUL for extension to dwelling
THE PAINSWICK HOTEL, KEMPS LANE Retrospective application for repairs to stone boundary wall facing Kemps Lane and replacement of defective softwood gate panel.
GREENBANK, THE GREEN, EDGE Erection of an extension
TOWER COTTAGE, KEMPS LANE Reinstatement of suspended timber floor, replacement of timber windows, installation of flue, lifting, damp proofing & relaying stone flag.

The Ancient Society of Painswick Youths

aka - the bellringers at St. Mary's

.....who were founded in 1686, and are thus a mere 320 years old, rang a quarter peal (*) on Tuesday 24th October to mark the 350th anniversary this year of two of the most venerable institutions in Painswick - Christ Church, Gloucester Street and the Friends Meeting House in Vicarage Street.

(* For the campanologically challenged, a quarter peal is 1260 changes and takes about 45 minutes to ring. The method was Plain Bob Doubles. This is quite a significant feat for the local ringers.)

David Bishop

LAWNMOWERS

- SERVICED
- SHARPENED
- REPAIRED

ALSO - RIDE-ON MOWERS, CUBS, ABS ROTATORS, STEERERS, HEDGETRIMMERS, ETC

FREE COLLECTION AND DELIVERY

CHELTENHAM MOWER SERVICES

Tel: 01452 616169

Unit 84 Nexus, Hurreme Road, Gloucester Business Park, G13, GL3 4AG

Visit and Buy On-Line at www.mowers-online.co.uk

Readers are reminded that
there is no longer a direct line to Painswick's Police Officer

Non-emergency calls should be put through
08450.901234

**Peter Barnfield
Painter and Decorator**

20 Years experience
Internal & External work undertaken
Texturing Speciality in paper hanging

**Free estimates given
01452.411182 or 07881 408380**

MINI-ADS

To let: Very nice, 1 Bedroom flat with views and redecorated. Bussage village centre. £425 per month. Claire on 01453.762306 or painswick7@gmail.com

Accommodation Available - for reliable single person. Bed Sitting room available plus shared use of Bathroom & kitchen in extremely comfortable rural cottage 1½ miles from Painswick Contact 07909.867907.

Property to Let - in Sheepscombe. Four Bedroom period house with fabulous views. Available 1st December. Enquiries to 07810.353060.

Mobile Polar Wind - 4.0 Kw Ducted Air Conditioner for sale. Cost £600.00. New in June 2004. Now no longer required. For sale £150.00. Telephone 813861.

Companion. Lady offers weekly help at home for an elderly person. Hours/duties to be agreed. Married, aged 32, and have experience working in this area. References available. Elena 07789.717771

Wanted for Rent - Local family requires three or four bedroom cottage to rent for six months. Please contact 814858.

Kingsize Bed - John Lewis antique pine. Can deliver. £200.00 o.n.o. Telephone 812918.

MINI-ADS - non-commercial, maximum of 30 words - are 10p per word with a minimum payment of £1. Maximum of 14 accepted per month. Beacon subscribers have 25% discount.

Please send money with mini-ad to Philip Oakley, Stoneleigh, Gloucester Street, GL6 6QN. If paying by cheque, please make it payable to The Painswick Beacon.

FREE

Internal teak door, with panels. 2ft 9 inches wide, 6ft 6 inches high. 813506

FREE-ADS is a service for recycling unwanted possessions to good new homes, free of charge, but maximum of 30 words - can be placed in the Beacon Post Box in New Street or emailed to painswickbeacon@supanet.com

Printed in Gloucester by

IMBE MAIL BOXES ETC.
MAKING BUSINESS EASIER: WORLDWIDE.

The Personal Column

Babies

Congratulations to JENNIE and PETER BARBER on the birth of their son John Riley on 10th October, weighing 6lbs 5oz, a first grandchild for Allyson and Michael Davis, and a great-grandson for Grace Hanchet and a step-brother for Daniel,

and to ALEXANDER and SIAN HALES on the birth of Zoe Eleanor, a first grandchild for Patricia and Royden Hales.

Engagement

Congratulations to GEORGINA SLADER, youngest daughter of Nick and Maggie Slader, and NICK EVANS of Cheshire who announced their engagement recently.

Diamond Wedding

Congratulations to JUNE and JOHN STANGROOM who were married sixty years ago on 4th November.

Get well soon

Our best wishes for a speedy recovery to MAIR DALY, MICHAEL BRENNAN and JOSEPHINE EVANS who have all been in hospital recently. (*We add RACHEL TAYLOR's name here since, as we go to press she goes into hospital. Ed.*)

Welcome

We would like to welcome Mr and Mrs OLIVER to Court Barn in Stroud Road, Mr and Mrs INNES to Painswick Heights, Mr and Mrs LYNALL and family to 14 Gloucester Road, SANDRA and DAVID GLASS to Wheatleys, Cotswold Mead, Ms PETRA PETERS and Mr MACARTEN to Laburnum in Jacks Green, Miss HUMBLE and SIMON WHITE to Abbey Barn in The Vatch, and Mr HOWSON to 3 Churchill Way.

Condolences

Our sincere sympathies to the family and friends of MARJORIE GURDEN, EMILY JONES and NELLIE THOMPSON who have all died recently.

Personal messages

Jessica Barnett writes: I want to thank all the people who have wished me well when I left Painswick for university. I much appreciated the thoughts, cards and gifts I have received. I am glad to have been able to meet so many lovely people living in Painswick and working in the library. It's going well so far and I hope to see you all during the holidays. Thank you for making my gap year so much more enjoyable.

Olga Hill and family would like to thank everyone who sent letters, cards and flowers following Denys' death. The thoughts and memories expressed in them helped so very much.

Steve & Liz Glanfield, write from Greenfields in Kingsmill Lane: May we take this opportunity to thank everyone who may have been inconvenienced by the works we are undertaking to make this our new home, your forbearance has been remarkable. We are hoping, weather permitting, that the build will be complete next month but there may still be builders' vans on the lane for a while thereafter.

We both look forward to being enthusiastic members of the community and thank you all again.

DAVID ARCHARD

In association with

Philip Ford & Son Funeral Directors

Part of Dignity plc. A British Company.

*Private Chapels of Rest
24 hour Personal Service*

Dirleton House
Cainscross Road
Stroud

01452 812103
or 01453 763592

Sue and Mary, the daughters of the late Marjorie Gurden, would like to thank all her friends in Painswick for their kind cards and letters after their sad loss; and for all their support over the past year. Special thanks to all at Painswick surgery, especially the District Nurses.

NEXT ISSUE

Publication date
SATURDAY 2nd DECEMBER

Dateline for all copy

including Mini-Ads - Display advertising
- Diary - Club news - etc using
E-mail or the Beacon post box
SATURDAY 18th NOVEMBER

Telephone
01452 814500
E-mail address
painswickbeacon@supanet.com
Photographs
preferably original
at 600dpi in JPEG
Hard copy preferably typed
Beacon post box - New Street
Web site
www.painswickbeacon.org.uk
Postal address
excluding items for publication
Stoneleigh, Gloucester Street GL6 6QN

All copy must include
Author, address
and contact telephone number

Beacon Committee

Co-ordinating Editor this month
Leslie Brotherton 813101
Personal column
Rachel Taylor 813402
Diary
Edwina Buttrey 812565
Feature writers
Carol Maxwell 813387
Jack Burgess 812167
Sport
Terry Parker 812191
Directory
Leslie Brotherton 813101
Business advertising
Dermot Cassidy 813737
Distribution
Celia Lougher 812624
Treasurer
Philip Oakley 813936
Subscriptions
Shirley Clark 812378

Rachel Taylor welcomes information for the Personal Column.

Space limitations permit only the minimum amount of text, and your assistance in this regard is helpful.

The
**Anthony
Fisher**
Curtain Company

**SPECIALIST
CURTAIN MAKER**

A very personal advice and making service for simple drapes or elaborate window dressings. For an appointment to see thousands of fabrics, or visiting from Sandersons to Colerail. In your home or my office/shurston at 41 Brunswick Road, Gloucester

Please ring Glas 309333 (day) or Painswick 812130 (evenings).