

The Painswick Beacon

Sine praeiudicio

Volume 34 Number 10

January 2012

Painswickian Of The Year

Midge Leney is this year's Painswickian and, as so many of you who nominated her predicted, was completely stunned when she heard the news. This quiet, unassuming lady has given so much on so many fronts and many of you feel that it's time to acknowledge her contribution.

Midge came to live in Painswick in 1968 "... thinking I would move on after a couple of years!" "I've just loved it here," she adds. A lecturer in rural pursuits after the War, she subsequently became a school teacher, then came here and returned to lecturing at Gloucester College which eventually closed in 1982. She had loved her work



but equally has loved retired life in Painswick which she feels is a wonderful place to live.

"You get involved with this and that," she says, but Midge's involvement has in fact always been of a very giving nature.

Initially it was Meals on Wheels which she organised for ten years. "We got the meals delivered whatever the situation," she says and, characteristically, attributes that achievement to her team. Her involvement with the RSPCA and the Red Cross has, amongst other things, meant tireless fund raising via coffee mornings and the like, usually held at her house in Vicarage Street. "It all makes me feel very humble," she says modestly.

She has over the years been involved with several local societies such as the Friday Club for which, she maintains, she does little "... just make the tea." Not so, according to many of you! She is an active member of the Horticultural Club, had an official role at the Bowling Club and was a member of and worker at Christ Church. She has been a loyal volunteer in the Tourist Office when it was based in the former library building. Currently she is Chairman of and has been a driver for the Ashwell House Day Centre where she is very much appreciated by everyone involved. Her commitment to what she does is total.

Quite apart from her contributions to such recognisable organisations, Midge is acknowledged by many as the person who will always quietly help those in need. She loves living in Vicarage Street where she is always willing to help her neighbours. Kind and caring, unassuming and hard-working, and with a sharp intellect and endless generosity, she has given so much to so many in Painswick. The general feeling is that being voted Painswickian of the Year is both an honour and timely recognition of all her hard work.

"I'm less involved than I used to be, but still very willing, and more than anything I really value people's friendship," she says. People matter to her. What can be said with certainty is that Midge Leney's contribution to Painswick life over many years is truly valued by so many here and this is an accolade she well deserves.

This year a new accolade has been introduced – Young Painswickian of the Year – and it is to be hoped that 16-year old Jonas Pollard will be the first of many to come.

Jonas has been outstanding in his endeavours to raise funds for the Macmillan cancer nurses charity. As a result of his epic bike ride from Cromer in Norfolk to Caernarvon in North Wales, fund raising at his former school and all his tips from his part-time job at the Rococo Garden cafe he has to-date raised £2400 over the last six months or so. And as far as Jonas is concerned this is just the beginning.

His achievement and winning the Diana Award '...for his outstanding, sustained and selfless contribution to his community' have inspired him to want to do more. So what plans are afoot? "I'm thinking of tackling all the National Parks – about 2500 miles in total," he says calmly, "probably next summer, but I need to start organising now." Some project!

There is one small problem. Last year's ride rendered his bike fairly kaput. However, he has been overwhelmed by the kindness and generosity of a Beacon subscriber who, having read about Jonas, has offered to replace the old bike. This he considers to be a wonderful gesture but unfortunately at present he has nowhere to keep a new bike. "It would need shelter but I don't have a covered space." Jonas lives in Upper Washwell. (Is there anyone who could offer a safe sheltered area for Jonas's new bike?)

Jonas is a student on a demanding full-time course at Cirencester College. He also has a part-time job at the Rococo Garden cafe and delivers Stroud Life in Painswick which takes about eight hours each week. Term time is therefore fully occupied for him and the big bike ride he is considering will have to be undertaken next summer.



He asks if anyone would like to join him for any, or even all, of the trip. Now there's an invitation. This time he plans to give half of any money raised to the Macmillan charity and the other half to the hospice in Minchinhampton which his mother attends for art therapy. For Jonas this is very important. "I must do it," he says, "otherwise I would be breaking a promise to myself."

We are sure you will agree that this young man is certainly worthy of the title, Young Painswickian of the Year.

Carol Maxwell

On other pages this month: cupcakes for carers, **Beaco Doku**, Directory 2012, **Goodbye 2011- Welcome 2012**, wonderful concerts, **Rococo Gardens**, village diary, **community library gets the go-ahead**, story competition, **Beacon archive**, Queen's Diamond Jubilee, **sports reports**, personal training in Painswick, **last call allotments**, and more.....

PARISH COUNCIL NEWS 14th December meeting

Reports upon meetings of the Parish Council cannot help but be selective, if only because of space constraints. We try to highlight points of wide public interest, based upon what we see and hear.

The full minutes of Council and committee meetings are available for scrutiny at the Council's office.



Planning Committee

Court House. A number of questions were raised by members of the public concerning the Court house application. The Councillors resolved to recommend refusal of the planning application for alterations which included the creation of a shelter adjoining the swimming pool. They also recommended refusal of the listed building application because the planned materials were inappropriate. Land at Tibbiwell. The Chairman confirmed that the application had been withdrawn.

Parish Council

Allotments

Councillor Martin Slinger told members that by the November 23rd closing date for allotment applications only six had been received. Those residents who had previously expressed an interest in renting an allotment were then contacted and the number stood at 14 with two applicants seeking a half plot. It was agreed to publicise the situation in the Beacon to seek further allotment holders as the present number would attract an annual charge of approximately £83 per allotment. Those who had applied would be asked if they were prepared to pay the £83 rental should that become the final figure.

Big Community Offer

It was reported that the Parish Council had signed an agreement with the County Council in which the County Council agreed to grant the Parish Council the sum of £49k to carry out the necessary modifications to the Town Hall in order to accommodate the Community Library. The Parish Council had in turn signed a Memorandum of Understanding with the Community Library in Painswick (CLIP) group which would enable CLIP to rent the upper room of the Town Hall.

County Councillor's Report

Residual Waste Project. The selection of the preferred bidder to carry out the creation of an incinerator at Javelin Park was expected before the end of 2011. Icelandic money. Mrs Nash said that the County Council will be able to recover approximately £10 million of the £12 million invested.

Finance

Budget setting for the next financial year was in progress. There was to be public consultation during December. Libraries. Following the High Court ruling, the mobile library service has had to be restored and the opening hours reversed at some libraries. It was hoped that a new decision could be taken soon so that community

groups could proceed with their plans to run their libraries and help their communities. Registration Service. A new "Tell us once" service would shortly be operating. The service would enable relatives when registering a death to opt for other agencies to be notified as well. Copies of Birth, Marriage and Death Certificates could now be ordered on line. Keeping people in their own homes. Two schemes were running. The first called Warm and Well was designed to improve the means of saving energy and to provide insulation to houses. Those people receiving benefits, on low income or over 70 years may receive free services. Advice was available on 0800 512 012. The second scheme called Safe at Home was run by Mears and would provide changes such as hand rails or making garden paths and steps safe. Contact number 0800 0323139.

District Councillor's Report

Councillor Barbara Tait explained the District Council's proposed changes for housing development, the new waste collection scheme which would include the collection of cardboard, the outcome of the car park charges consultation, and the proposed support for first time buyers.

Parish Plan

A meeting of Parish Councillors has been arranged for Monday 16th January. The Olympic Torch Relay. Meetings had taken place with the District Council. The Parish Council had decided not to go ahead with ordering banners etc at this time. The thinking was to link the Olympic Torch event with that of The Queen's Diamond Jubilee and, among other possible items, order sufficient small Union Flags to each schoolchild to be able to wave at the roadside along the A46 as the Torch passes through the village.

Catbrain Quarry

The District Council's Senior Enforcement Officer had informed the Parish Council that a Temporary Stop Notice had been served on Meister Masonry on 8th December requiring them to stop all the ground alteration operations. The notice allowed Meister Masonry to carry out any necessary works to secure and stabilize the land but the Enforcement Officer stated there should not be a lot of work necessary for that. Any processing, sorting or removal of materials from the site was required to stop immediately and would not be permissible as 'stabilization'.

Town Hall Works Project

The Council was informed that the successful contractor was R & B Construction and that the company's tender

was within budget. The works had already commenced and were scheduled to be completed by the end of January.

Roy Balgobin
Clerk to Painswick Parish Council

Erratum Catbrain quarry - copse

In reporting in our November issue (page 2) upon the presentation made and questions answered by Richard Heather, MD for Meister Masonry, to the Parish Council concerning developments at the Catbrain quarry we said, correctly, "He went on to report that Ellie Phillips of FWAG had obtained a grant for the planting of a new copse at the north west corner of the site".

Our attention has been drawn to the fact that neither Ms Phillips or FWAG has any connection with such a proposition, or applying for a grant. Mr Heather has - after making enquiry - pointed out to us that his understanding actually originated from a conversation he had with the Head Green Keeper for Painswick Golf Club. He has asked that his apologies for this misunderstanding are made known to anyone concerned.

WANT MORE FROM YOUR PC?

- PCs built for all requirements
 - Repairs and maintenance
 - Broadband set-up
 - Virus removal
 - Security checks
 - Upgrades
- and much more ...



PC REPAIRS & MAINTENANCE

Based in Stroud

Call Rodger
tel 01453 766312
mob 07949 792501

www.pccomputerrepairs.co.uk

Tree Surgery

Sapling to Veteran Trees

Fruit Tree Pruning : Planting

Stump Grinding : Seasoned Firewood

Fully Insured : 25 years experience



Clare Overhill & John Rhodes
Painswick 812709

Landcare Services
6 Pullens Road Painswick

The Community Library Gets The Go-Ahead



On 8th December the Parish Council signed the agreement with the County Council for the funding for the improvements to the Town Hall and CLIP (Community Library in Painswick) signed its agreement with the Parish Council for using the upper hall for the Community Library. CLIP and the County Council are now putting the final touches to the agreement for the library setting-up and running cost grants.

CLIP has selected a supplier for the library furniture and shelving and plans are nearing completion. Once the shelves have been installed the next steps will be to:

- Install the public access computers
- Receive a stock of books from the old County Library
- Train volunteers

CLIP will also be asking for donations of books. Further details will be given in the February 2012 issue of the Beacon. Please consider if you are able help before you make other arrangements for your surplus books. We know from the responses to the questionnaires that crime novels, (auto)biographies and children's books will be especially (but not exclusively) popular.

The Vision for Painswick is a Library for the 21st Century

The library will be at the core of a wide range of services for the benefit of Painswick and the surrounding neighbourhood. With the help of its volunteers CLIP hopes to develop such facilities as children's activities, a base for a housebound library service, an Internet club, a comfortable seating area with newspapers and journals, a homework club and an information hub. This will provide a wide range of information to the community and to visitors to Painswick. We are looking forward to working with local businesses and organisations to establish a facility that will be of benefit to the whole community. There will be four public access computers available for searching the internet.

Thanks to all who have already volunteered. We believe that we can initially open the library for 15 hours a week. We would like to increase the opening hours to 21 hours as soon as we have more volunteers available and ready to be trained. How much we can do will depend upon your interest and involvement. Progress has been slowed by the Judicial Review but much has been achieved. Please continue with your support so we can show the rest of the county (and further afield) that Painswick has a library of which we can all be proud.



Peter Corley

Catbrain Quarry

At the recent Parish Council meeting it was reported that Stroud District Council had served a Temporary Stop Notice on Meister Masonry requiring them to stop all of the ground alteration operations. The notice does allow the company to carry out any necessary works to secure and stabilize the land but, the Senior Enforcement Officer advises, there should not be a lot of work necessary for that. Any processing, sorting or removal of materials from the site was required to stop immediately and would not be permissible as 'stabilization'. The Beacon understands that it is the District Council's intention to take full enforcement action against the company.

Car Parking Charges

The Parish Council has been informed by Stroud District Council that following the period of public consultation relating to a proposed increase in charges, in Painswick short-stay charges will be reduced from 30p to 20p for the first hour and from 50p for two hours to 40p. The District Council will consult with Painswick Parish Council about the changes which are to be introduced no later than the end of March and potentially by the end of January 2012.

Roy Balgobin

Clerk to Painswick Parish Council

Goodwill Evening

Painswick's Goodwill Evening on 9th December was a considerable success with the Town Hall and Painswick Centre in particular crowded with residents and visitors. The difficulty with the event is that the activity tends to centre on those two venues and this can be to the detriment of the established retailers in New Street. Our photo is of the Community Choir singing in the Painswick Centre.



Poppy Appeal 2011

The 2011 Poppy Appeal was successful, yet again, in Painswick, Pitchcombe and Edge, with a total of £4,798-10 collected. An increase over 2010 of 7%

The proceeds of the POPPYROCK CONCERT [celebrating the 90th Anniversary of the Appeal], have yet to be finalised, but including the generously subscribed bucket collection, led by the Royal British Legion on the night, will add over £1000 to this total.

I would like to express my thanks to all who helped the collection, all who contributed to it, the Painswick Centre Trustees and all who attended the concert.

Russ Herbert, Local Organisor

Finishing Touch

Not just any cleaning service!



- * Pre & Post House Sale or letting
- * Pre & Post Events & Parties
- * Post Building Work
- * Spring Cleaning
- * Regular and One Off Cleaning

Painswick Based 07769 695772
Jennie Barber 01452 812644
e-mail *davis78uk@yahoo.co.uk*



Pressed 2 Perfection

The Premier Ironing Service

- ✓ Reliable and accommodating
- ✓ Free pick up & delivery
- ✓ Only £9.00 an hour and some prices per item

Viki: 07976 400139

Call in the perfect solution!

Merit Award

Edge residents and long standing Labour Party members Bert and Barbara Varty were presented with the prestigious Labour Party Merit Award by Baroness Jean Corston at the parliamentary hustings meeting at Stroud's Old Town Hall in November. The award was in recognition of their outstanding and tireless service to the Labour Party and the wider community. Bert has held many posts in the Labour Party and the couple have been a mainstay of the constituency party since moving to Edge in 1990 having been involved in virtually every local election campaign and all the general election campaigns. Outside of the Labour Party, Bert has served as a school governor at Alleyne's Grammar school, as chairman of the Stevenage library committee, as a member of the national executive of the Commission for the New Towns and as committee member and chairman of the Royal Institute of Chartered Surveyors Hong Kong. Barbara has served as chairwoman, secretary and treasurer of the King George V School Hong Kong parent-teacher association, as chairwomen of the Women's Corona Society Hong Kong branch and as a volunteer for Oxfam Hong Kong. Closer to home, the couple have organised and catered the Edge monthly village lunch and the Edge village social club for the elderly as well as acting as the Edge neighbourhood watch coordinator.

Peter Humphries, Branch Chairman, Painswick Labour Party

New Art Courses

Jane Garbett writes to advise that new art courses including oils and water-colour classes for beginners and more experienced artists will be starting in the new year. To express an interest and for more information please contact Jane on 812176.



Rococo Garden Just for you

2011 was an interesting year up at the Rococo Garden, a major landscape restoration job was completed just in time for our reopening for the snowdrop season. That season proved challenging with many wet days and visitor numbers were very disappointing. However the rest of the year proved to be one of our best ever, turning a large budgetary deficit into a small surplus. This was mainly due to Art in the Garden, which ran through August in conjunction with the Painswick Art Festival. This exciting and now annual event is set to grow even bigger in 2012.

Many Painswick residents already enjoy the benefits of being a Friend of the Rococo Garden. Primarily this gives free admission to the Garden during normal opening hours. This means it is possible just to pop in for a short time if the desire takes – it is surprising how many mums come after picking up the children from The Croft School!

The Friends Organisation would like to be able to extend this opportunity for more locals to get involved and maybe encourage the few Painswickians who have never visited the Garden to make that step down our drive! Therefore, for 2012, we are offering an exclusive package to anyone with a Painswick address. Instead of the normal annual subscription of £21.00 for a single membership, the cost will be £15.00 for the first year. Joint or Family membership will cost £25.00, a saving of £11 and £18 respectively.

To take advantage of this offer, just visit the Garden and join on the spot using your Painswick address. We look forward to seeing you.

Paul Moir

Painswick Beacon Conservation Group

The Painswick Beacon Conservation Group has had an eventful year. A lot of good clearance work was done in the spring at various locations. Then we learned the details of how we could be affected by the money stream resulting from the Higher Level Stewardship Scheme signed up for by the owner of the common, Selina Blow. We now have areas of priority to work on, and where we have done preliminary work we expect, during January, to see the first grazing cattle near the cemetery. The first grazing for over fifty years. We are lucky to have expert, good humoured guidance from Ellie Phillips of the Local Farming and Wildlife Group, and from Natural England.

At our AGM in November we were delighted to sign up some new members and then to welcome some of them to our Saturday working parties. We need all the help we can get, so if you are at all interested, do get in touch with one of us. Our next working party will be today, Saturday, January 7th. Other dates are in the Village Diary.

*David Allott, Chairman 812624
David Little, Secretary 813734*

DAVID ARCHARD

in association with

Philip Ford & Son Funeral Directors

Part of Dignity plc. A British Company

**Private Chapels of Rest
24 hour Personal Service**
Dirleton House

Cainscross Road Stroud
01452 812103 or 01453 763592



CENTRELINE
ARCHITECTURAL SCULPTURE

www.centrelinestone.co.uk

STONEMASONS
STONECARVERS
SCULPTORS
CONSERVATION
CRAFTSMEN



ADVISORS

Fairfax House, Vicarage Street, Painswick
Office: 01452 813892 Workshop: 01285 821074

Centenary Year



GODDARD'S GARAGE

Cheltenham Road Painswick

- Full servicing & repair facilities
- MOT preparation & repairs
- Private hire -
local or long distance
- Petrol/ Diesel/ Tyres/ Exhausts
- Paraffin/ Coal/ Calor Gas
- Car valeting
- Air conditioning

Centenary Year

Personal attention for your car

01452 812240

W D Horne

(formerly Horne & Kilmister)

General builders and stonemasons

'The complete building service'

- Extensions, renovations & new build
- Garages
- Roofing
- Hard landscaping



07743.194212 01453.872329

Personal training comes to Painswick!

You may recognize our local personal trainer, Lyn Thornton, in and around Painswick running on a regular basis with her Jack Russell Alfie. Lyn has lived in Painswick for 17 years running Hale Cottage B & B but has recently returned to her first career passion – fitness.

Lyn has a wealth of experience in the fitness industry as an aerobics, gym and weight training instructor working in



London and the South East for over 15 years.

She has now begun Simply Personal Training offering 1 to 1 sessions, small group personal training, diet and lifestyle advice operating from centres in Painswick, Tetbury and other local venues. She will also work with you at home!

As a qualified counsellor and mature individual Lyn can also offer pre-training

sessions to discuss any body image, confidence or motivational issues.

Lyn is offering free half hour taster sessions throughout January so if all the Christmas celebrations have taken their toll why not get in touch with her and start the New Year with a new fitness regime.

To book or chat through your requirements call Lyn on 07759 591954 or email: - lyn@simplypersonaltraining.co.uk



Cranham Handbells

Sunday 29th January in Cranham Village Hall
2.00pm - 5.30pm
Marathon for The Cranham Playgroup and RNLI.

Puddings, coffee, tea and cakes while being entertained.

Admission free but donations welcomed.



Caroline Crawford
INTERIOR DESIGN

- Interior Design
- Made to Measure Curtains
- Soft Furnishings & Fabrics
- Upholstery & Wallpapers
- Paint Techniques & Flooring
- Lighting & Accessories

Opening times: By Appointment
Tel/Fax: **01452 813631**
www.carolinecrawfordinteriors.co.uk
email: cci@carolinecrawfordinteriors.co.uk

Large and small projects

BEN LIVING BLC CONTRACTORS

Lakes- ponds - water features
Planting - tree work
Fencing - decking
Stonework - patios
Groundworks - drainage
External plumbing
Traditional building work

Please contact Ben on -
07702 984711
01452 812036

enquiries@bhc.uk.com
WWW.BLC.UK.COM

Passionately undertaken

All Taxation & Accountancy Needs

We're here to help. Forward thinking professionals with old fashioned values on service and quality.



price davis
CHARTERED ACCOUNTANTS

Tel: 812491 www.pricedavis.co.uk
The Old Baptist Chapel, New Street

Cupcakes for Carers



Due to my own family circumstances I have realized how trapped and isolated the devoted "carers" of family members or partners who need full-time assistance may feel. So I have decided to hold a teaparty for carers and their dependants (if they too would like to come) who live in Painswick or the surrounding villages. The teaparty will be in the Green room at the Painswick Centre, on Tuesday, January 10th. Pop in at any time between 1.30pm and 4.30pm to have a chat, meet other carers and perhaps share ideas of how you might like to move forward, maybe support each other, - should we have a monthly club for instance? Would a different time be better for you?

There is a stair lift to the Green Room and somebody on hand to assist you if necessary. If anybody would like to help with the tea, offer a lift or has any skills to offer for relaxation etc. please phone me on 813326. Looking forward to seeing you there.

Patricia Burrows

2011 Finishes with a Flourish

After a week of stormy weather, Painswick's Goodwill evening on 9th December was blessed with dry, still weather, a starlit sky and lovely moonlight. Many local residents took advantage of the conditions to enjoy the sparkling lights on the yews trees and to visit and enjoy the festive treats offered by shops, restaurants and community halls. The Trustees thank all the stallholders and visitors who made the Painswick Centre's Goodwill and Christmas Fair such a success. In particular, we congratulate the Community Choir on their singing and thank Phil Ion who provided the dazzling flood lighting around the Painswick Centre's exterior.



The next evening, the Centre once again rocked to the music of three bands in the 'PoppyRock' concert held in aid of the Royal British Legion. The Trustees thank Paul Gray and Russ Herbert for organising the concert and hope that the Blues evenings might return once more to the village.

Sales of the 2012 Calendars featuring 'A Year in Painswick' have raised over £1000 after expenses. We have the just 10 left, available by contacting 813791. Our grateful thanks go to the eleven Business Sponsors, to all the photographers and to the shops, estate agents and post office who sold calendars on our behalf. The money raised will be put towards the refurbishment of the Cotswold and Green Rooms, kitchen and cloakroom, including the installation of a new heating system, flooring and WC, scheduled for early 2012. Sue London is to be congratulated on the success of the calendar project.

The Trustees received many constructive comments about the calendar and learnt a great deal from the exercise. We are planning to produce a new edition for 2013 and in the New Year will be announcing a competition to attract the best high-quality pictures of Painswick's most iconic views. Watch this space!

Finally to all the people who hire and use the Painswick Centre: thank you for your support in 2011. We hope to welcome you again soon.

Jane Rowe, on behalf of the Trustees

Birmingham and Music

Malcolm Lewis gave us an illustrated talk about some of the musicians associated with Birmingham and venues for its concerts. As an introduction Malcolm played part of a Sinfonietta by Janacek played by the Birmingham Symphony Orchestra, conducted by Simon Rattle.

By 1820, Birmingham needed a new concert hall and this became the Town Hall. It had a magnificent organ which was played by George Thalben Ball. Elgar was another significant figure in the musical life of Birmingham, who conducted the first concert in the new hall. Various well-known conductors followed, including Adrian Boult who returned to help to put the Orchestra back on track for recordings after a decline.

Malcolm played for us Haydn's Variations on a Theme by Brahms. In 1951, Rudolf Schwarz moved from the Bournemouth Symphony Orchestra. We heard a Slavonic Dance by Dvorak. Other well-known pieces included the Champagne Polka by Johann Strauss (we counted the popping of 12 corks). We heard a great performance of Take a Pair of Sparkling Eyes (Gilbert & Sullivan) sung by Webster Booth. Malcolm continued with the Firebird Suite conducted by Simon Rattle, and the Flower Song from Carmen. As a finale we were treated to Elgar's, Enigma Variations.

The Orchestra moved to its new home, Symphony Hall, in 1991 with Simon Rattle as Conductor.

This was a well-chosen programme, of particular interest to our Group, given our frequent visits to the splendid Birmingham Symphony Hall.

Quizzical Music, with Wine

Ralph Kenber devised a devilish quiz to set the tone and to remind us that we were a musically learned society. Just as we thought we had reached the end, he produced another set of equally challenging questions. Eventually, we were liberated, to tackle the delicious eats, washed down by copious draughts of much-needed wine. When we were fully in the Christmas spirit, our Chairman Alex Nichols entertained us with some of his favourites which included a very funny spoof Gilbert & Sullivan.



When like the Good King, we could go no longer, we rendered hearty thanks to those who had given us such a convivial evening, and followed the steps of those ahead of us, hoping they were going in the right direction.

Richard Burges Watson



Helicopters and Field Battery

We had a varied end to 2011, starting with a talk from Mark Wilkins entitled "History & Development of Helicopters". Mark had spoken to us before about the County Air Ambulance and broadened our knowledge this time by describing how the design of helicopters has to overcome their innate unwillingness to fly. He likened the skills needed to fly these machines to balancing on a beach ball.

On 30th November, Norman Snowden, one of our own members who is over 90, delivered an excellent talk entitled "Field Gun Battery in WW2" illustrated by a Powerpoint presentation. Norman was dressed in his wartime uniform, which still fitted, complete with cap and Sam Browne belt! His comprehensive description of the operation of a field gun and its crew included his account of communications (by field telephone) and calculations (by slide rule) required in the field to ascertain trajectory, shell charge, wind speed, barometric pressure and many other factors.

On 7th December we held our Christmas Dinner at The Hill in Stroud. Our president, Peter Roberts gave an amusing speech outlining the activities of the club and proposing a toast to our guests, to which Joan Hardwidge replied.

Glynn Nixon

Two Wonderful Concerts

First, the inimitable Russians with their amazing voices. The Voskresenije (Resurrection) Vocal Ensemble from St. Petersburg were here on their sixth visit, the last stop on an 2-months tour of the UK, and sang their hearts out on 25th November in St. Mary's Church. Yury Maruk, conductor and Anatoly Artamonov, the ever popular basso-profundo, are well known to us whilst the sopranos, altos, tenors and bass change annually. With the first half of sacred music, and Russian folk songs after the interval, it was by common consent their best ever concert.

Next, the Stroud Choral Society, with as usual several Painswick singers taking part, performed a most varied programme in St. George's Church, Nailsworth on 3rd December. Outstanding were the choirs - the main one supported by a "gallery choir" - in complete harmony with Huw Williams, the remarkable if unusual conductor who managed to get the audience involved all along. Music by Purcell, Britten and Holst was performed by choir, tenors and organ solos, with the St. Paul's Suite showing off the brilliant quality of the orchestra.

The main work and highlight of the evening was Britten's most unusual Saint Nicholas Cantata, strange to start with and even discordant in places, but it grew on one. A lovely story, though in part quite frightening, was brought to life by the orchestra, supported by piano and organ and a superb tenor, engaged at very short notice. A great performance.

Their next concert will Haydn's Stabat Mater on 24th March in the Subscription Rooms.

Ralph Kenber

BOARDWALK FLOORING WOODFLOOR SPECIALIST

*All types of wood flooring
supplied and fitted
Floor sanding and restoration*

Please call for free quotation
and samples
07879 452150 / 01453 766134



**Eye examinations at home
- for the housebound**
Specialised service - free (NHS) for
those over 60, including Glaucoma
screening and full sight test
Tel. 01453 833272 or 07800 821624
(mobile)

PAUL A MORRIS

GENERAL BUILDER LTD
EXTENSION: RENOVATION: STONEWORK
KITCHENS: BATHROOMS
PATIOS: DRY-STONE WALLING
PLUMBING: ELECTRICAL WORK:
PLASTERING

paulmorrisbuildersltd@gmail.com
01452 814524 or 07818 087375

Federation of Master
Builders
Over 20 years experience



January Production

Painswick Players are busy rehearsing their next production, a double bill at the Painswick Centre on 26th, 27th and 28th January. The two one-act plays are 'Alternative Accommodation' by Pam Valentine and 'The Bear' by Anton Chekhov. Tickets will be available from 4th January from the Post Office and from Steve Friar on (01452) 814004



'Alternative Accommodation' is essentially a light-hearted play, but it does make interesting points about families deciding what's best for Mother "who is not getting any younger" – and offloading their own responsibilities, not realising that Mother has her own plans – and is well on the way to putting them into effect.

By contrast, the comedy in 'The Bear' derives from the characters' lack of self-knowledge. At the start the widow Popova fancies herself inconsolably bereaved, while Smirnov (the Bear himself, 'teddy' rather than 'grizzly') considers himself a woman-hater. The comic development of the 'courtship' is not subtle, and the play sweeps us along at a farcical cracking pace, ending with an unexpected surrender.



'Neil Webber, Mary Peterson and Peter Minall rehearse The Bear.'

Monthly Play-readings

Our monthly play-readings begin again in February. Everyone is welcome to join us at the Painswick Centre at 7.30 pm on the last Tuesday of most months (see The Village Diary).

Christmas Dinner

This year's Christmas dinner was attended by more than twenty members and their friends, several of whom entertained us with a variety of monologues, anecdotes and readings - and a truly appalling impression of Laurence Olivier's Richard III! The evening was accounted a great success, one that will undoubtedly be repeated next year at Painswick's splendid Bistro.

Dates for your diaries:

We are arranging a members' trip to The Everyman Theatre, Cheltenham, to see Alan Ayckbourn's latest play Neighbourhood Watch on Friday 24 February. Please let Jill know if you would like to go (810888 or copsam@talktalk.net).

Watch this space for details of next year's theatre workshops – following our highly successful collaboration with The Everyman Theatre last March and April. These will be open to everyone, not just members.

Following the outstanding success of last year's play Duets, the Painswick Players contribution to this year's annual Painswick Arts Festival will be a production (soon to be announced) on Thursday 12, Friday 13 and Saturday 14 July. Make a note in your diaries now!

Steve Friar

Tell Me A Story! Are you a budding author? Read on.....

Ever imagined seeing your work in print? Would you like to be a published author? Have you ever said to yourself 'That's a great idea for a short story'? Well here's the opportunity you've been waiting for...

In collaboration with the Painswick Arts Festival I am inviting entries for a short-story writing competition, the ten winning entries to appear in a high-quality book published by Darien-Jones Publishing of Pitchcombe.

Stories should be no more than 5,000 words in extent and should be typed in hard copy with double-spacing. The competition is open to all those who reside in the Painswick Beacon distribution area together with their friends and relatives who may live elsewhere. There is a £10 entry fee and winners will be asked to purchase at least six copies of the book. Publication will be on Saturday 28 July and the closing date for receipt of manuscripts is Saturday 16 June.

Entry forms may be obtained from me at 2 Gyde House, Painswick GL6 6RR, by 'phoning (01452) 814004 or emailing friarwriter@btinternet.com.

Here's the opportunity you've been waiting for... Get writing!

Steve Friar





three gables
dental, holistic + beauty centre

- ▷ PREVENTATIVE AND COSMETIC DENTISTRY
- ▷ BEAUTY THERAPIES
- ▷ FACIAL REJUVENATION

All in a relaxed and friendly environment with early, late and Saturday appointments available. On-site parking also available.

LET US BRIGHTEN UP YOUR SMILE

cheltenham rd painswick glos GL6 6XN
01452 814427
www.thethreegables.co.uk

ELECTRICAL AND ALARM SERVICES est. 1990

Rewires, extra lights, sockets, 17"edition consumer units, showers etc fault finding, burglar alarm systems, cctv installations, we also take over services of existing systems.

For a prompt reliable friendly service contact
Steve Gallagher
07836 273768
01453 791209
website: eaas.me.uk

NICEIC
DOMESTIC INSTALLER



Call today to arrange a visit.

Resthaven at Pitchcombe

Modern nursing home overlooking the beautiful Painswick valley. Offering long-term residential care & daily / weekly respite stays.

Resthaven, Pitchcombe, Stroud, Gloucestershire GL6 6LS
Tel. 01452 812682
www.resthavenpitchcombe.co.uk

Joe Feeley tells all

Very few of us have not, at some time, had reason to bless the hugely popular and successful institution of the Charity Shop, one of which at least, can now be found in almost every village and town in the country. In his talk to Yew Trees WI in November, Joe Feeley, who manages the shops for Cotswold Care Hospice, in a talk entitled 'The joys of running a charity shop', gave us an interesting and amusing insight into what goes on behind the scenes. He praised the dedication and enthusiasm of the charity's many volunteers, whom he stressed certainly do not spend all their time sitting around drinking tea, rather how, for example, their being 'on the ball' and spotting potentially valuable items amongst the donations, which can be passed on to local auctioneers to sell, can increase the charity's funds substantially, citing the cases of an antique Teddy Bear and a set of Rupert Bear annuals. Moreover, given that the charity received over 71,000 bags of donated items in 2010, there is not a lot of time for sitting around, and being physically fit is a great advantage! Cotswold Care expects to make about £1 million this year from the proceeds of shop sales. The policy is to try to sell items initially in the shop where they were handed in, except in 'delicate' circumstances, to economise on handling and transport costs, but to transfer them to another branch if they don't sell within a specific time. The major difference between the volunteers who work in charity shops and people employed in mainstream retailing is that the volunteers are there from choice and genuinely want to help the Hospice.

Charity Shops are now very much a part of the community, and apart from providing a service in increasing demand, which also produces funds for the charities concerned, are also environmentally aware, and recycle anything and everything that can be. The WI's next meeting will be held on 24th January 2012 in the changed venue of the Church Rooms, when there will be a talk given by Celia Hargrave on 'A Sahara Marathon'.

Maggie Drake

Town Hall

The Parish Council is pleased to report that the modifications to the Town Hall are progressing well. The work is planned to be completed by the end of January when the Council is scheduled to sign an agreement with the Community Library in Painswick (CLIP) Group for the renting of the upper room as a library. Part of the agreement is that the room will also accommodate the Tourist Information Centre. The cost of the modifications which is slightly under fifty thousand pounds does not fall on the Parish Council. This is because the Parish Council and CLIP were successful in their joint bid under the Big Community Offer by which the County Council provides the funding for a community library.

*Roy Balgobin
Clerk to the Parish Council*



Week of Christian Unity January 16th – 23rd 2012

Monday 16th Community Lunch
12noon – 1.15pm at Ashwell Centre
£2.50 plus 50p tea/coffee

Thursday 19th Speaker & afternoon Tea

Father Tom Gunning, Painswick (& Stroud)'s new Roman Catholic priest.
2.30pm Richmond Village Auditorium
£2.50

Monday 23rd Agape at The Bistro -7pm.

Bring your choice of readings, music, poetry etc and enjoy a light supper.
Tickets £10 available in January from each church

THE SHARPENING SERVICE



Kitchen knives, garden tools,
..... and most other blunt items!
For a speedy turnaround

Call **Rupert Miles** in Bisley
01452 770788
milesrup@btinternet.com



Established solicitors in Stroud offer a caring bespoke service:

- Wills, Trusts and Probate
- Family / Matrimonial
- Property / Conveyancing
- Litigation / Mediation
- Company / Commercial
- Employment / Compromise

The Old Court Offices, Beeches Green
Stroud, GL5 4BJ

Tel: 01453 762114

contact@effectivesolicitors.co.uk

www.leighyoung.co.uk



• TIME TO CUT THEM OUT?

Visit us for our one-to-one

• NHS STOP SMOKING SERVICE

We will give you all the support you need to

• QUIT FOR GOOD!

THE PAINSWICK PHARMACY
NEW STREET TEL: 01452 812263

More of Chloe at Three Gables

Chloe McCarthy is really excited about being back in Painswick. Chloe, who was married in September and was previously Chloe Smith, has been running her beauty business, Revive, mainly from her home in Cranham, and for one day per week at Three Gables in Cheltenham Road. From January she will be at Three Gables on Tuesdays 9.00-5.00, Thursdays 9.30-7.00 and once a month on Saturdays 9.00-1.00.

Chloe is keen to point out that Three Gables is not just a dental practice but includes other treatments as well. "We are totally separate in our practices but simply working in the same building," she says. "However, we are a team and there is always a warm welcome. It's a very professional set-up" With ease of access, ample parking and just a few yards from the centre of Painswick, she maintains that Three Gables is an ideal location for her business. "It's a complete treatment centre, and it has a really lovely atmosphere," she enthuses.



A beauty therapist with an impressive background in both training and experience, Chloe provides a very personal service tailored to the individual needs of her clients whose ages span the teens to the nineties. Her treatments, for both men and women,

offer a wide range of benefits from tension relief to making the most of one's appearance. From waxing to pedicures, nails to massage, she has recently taken on some new treatments including Shellac manicure which is proving very popular.

Clearly very comfortably based at Three Gables for which she has the highest regard, Chloe says that she has always preferred working in Painswick to anywhere else. She is very appreciative of all her local clients who she says have been so supportive. This is not surprising. Serious and enthusiastic about what she does, this young lady combines professionalism with a truly warm personality. Her clients will be pleased to hear of her extended presence in Painswick and she is, of course, always happy to welcome new clients. She can be contacted on 07859880641 or at Three Gables.

Carol Maxwell

BEACO-DOKU

Last month's test was certainly topical, with **T-I-N-S-E-L** and we had no responses about achievement - ah well! Another success story.

S	T	N	E	L	I
L	I	E	N	T	S
E	L	I	T	S	N
T	N	S	L	I	E
I	E	T	S	N	L
N	S	L	I	E	T

Back into season mode, and the depth of **W-I-N-T-E-R**, for January.

R					I
I			W		
		I		N	
			E	I	
	N				
	I				N

The African Elephant's Precarious Future

On 1st February, David Lemon will be talking to members of the Cotteswold Naturalists' Field Club about The African Elephant. Now living locally in France Lynch, David was privileged to work in Zimbabwe where he learnt at first-hand about these noble creatures. David is a keen advocate for their conservation and the preservation of their habitats. This thought-provoking talk will begin at 2:30pm in the Painswick Centre's Beacon Hall, with light refreshments to follow. Visitors and guests will be most welcome.

Jane Rowe, 813228



Stroud & District Mencap Society



Once again we would like to thank the people of Painswick for their support of our Christmas Fayre on November 26th 2011. We took just over £1800 on the day - a super total and have received a little more since. The Teddy bear was won by Mrs Freda Huddleston, and other raffle prizes are gradually being distributed. Thank you all for your help, contributions and support.

Andrea Linsell (812464)

Gloucestershire Gates

Hand-crafted Cleft hardwood Gates and Other Items. Made in Pitchcombe to order, using traditional tools and methods. Commissions great and small undertaken. Gates of all sizes, fencing, benches, arbours, trellis, stools, chairs etc

For more information call Nick on **01452 813246**
www.greenwoodcraft.co.uk

JOHN DANDY

Established 1969 **MOTORS**

- ➔ MOTs, Servicing & Repairs ➔
- ➔ Free collection & delivery service ➔
- ➔ Proprietor Painswick resident ➔
- ➔ Free courtesy car (subject to availability) ➔

Goodridge Avenue, Gloucester GL2 5EA
(01452) 527340

QUALITY & VALUE WHERE IT COUNTS



Tired PC

Poor Performance
Does it need fixing?
Call IDZ for advice and support.

All hardware and software repair, virus removal, upgrades and new installations. Broad experience, home, office, etc.

Local, friendly service
(01452) 812733





A La Carte Private Hire

Tel: 01452 813268
Mobile: 07748 235164
Sandra Walklett

*Any Distance - Airports, Seaports, etc
Quotations Without Obligation*

Last call allotments

The Parish Council has, after more months of diligent negotiation than its members wish to remember, and numerous frustrations along the way, reached the point at which a highly desirable field is at its disposal for leasing plots for allotments. The Council has discharged its statutory duty to search for and offer such to residents keen to augment their growing produce to take fresh to the table. After such a long period, the original number of 'declarations of interest' has dwindled to a point at which the final documents necessary to bring the proposal to reality may not be signed – there needing to be a minimum number in order to be certain of financial viability. The Council has already invested a significant amount of staff time, and administration costs, and is poised to sign a lease and contract to provide water to the Mop Tree site.

The Council's assessment is that 30 allotment holders would attract a rental of £30 per annum. The number of residents who have committed to having an allotment is 12 with two others wishing to share a plot. That would attract a rental of £83 per annum. Unless the number at least doubles then the Council does not believe the project to be viable. The Council has set a revised deadline for applications to the Clerk to the Parish Council at the Town Hall as Friday 13th January.

Could this be your healthy moment?



The Beacon archive

In this month, we reported

10 years ago

Part One of the Parish Plan was published after two years of consultations and community meetings. Conditional approval had been given for Orange to erect a phone mast at Skinners Mill Farm. Bill and Phil Varah were announced as Painswickians for 2001. Zero tolerance was advocated towards a spate of vandalism in the village. The 40th anniversary of the Tennis Club had been celebrated in November.

20 years ago

Repeated power failures were occurring despite many repairs to lines the previous October. Carol Parker was Painswickian for 1991, having retired after 19 years service as Community Nurse and Midwife. The introduction of new play equipment for the Recreation Field was discussed by the Parish Council. Painswick won the Calor Gas Parish Council quiz, broadcast on Radio Gloucestershire.

30 years ago

Tributes were made to Dr Tinker who had died in December after 55 years living in Painswick, 45 of which as a GP. The precept for 1982-83 was fixed at £10,986. Ten weekly lectures upon English Composers were to be given by Walter Goodman in Christ Church hall; the fee being £8. The Waterley Bottom Mummers had performed their ancient folk play in the village at Christmas. Snow, the heaviest in living memory, had fallen as early as 8th December, and remained on the ground until after Christmas.



We are grateful to David Nott for sending us this photograph of the Mummers' who visited the Falcon Hotel before Christmas.

LAWNMOWERS

- SERVICED
- SHARPENED
- REPAIRED

ALSO:- RIDE-ON MOWERS, CHAINSAWS, ROTAVATORS, STRIMMERS, HEDGE-TRIMMERS ETC.

FREE COLLECTION AND DELIVERY

CHELTENHAM MOWER SERVICES

01452 616169

Unit B3, Nexus, Hurricane Road
Gloucester Business Park, Gloucester GL3 4AG

Visit and Buy On-Line at
www.mowers-online.co.uk

Tree Surgery Garden Maintenance

Man with a saw:

Use me for your tree pruning and tree surgery
Flexible & local service
Rubbish disposed

Garden Maintenance

- Regular contract
- Winter maintenance
- Fencing
- Chipping

Firewood delivered locally

Fraser Hall

Brookthorpe Gloucestershire
07766 132903

Fully qualified and Insured

PAINSWICK ELECTRICAL SERVICES

- ✓ 40 years' experience
- ✓ 24-hour Emergency Service
- ✓ All electrical work undertaken
- ✓ Inspection & Testing
- ✓ Free Estimates
- ✓ PART P REGISTERED



Mike Turner

01453 758342 07850 784899



Need help around your home?

Decorating, Maintenance, Painting,
Paper Hanging and much more

Friendly prices from a
friendly caring person



David Holder
T: 01452 611866
M: 07977 099998
Established 1984

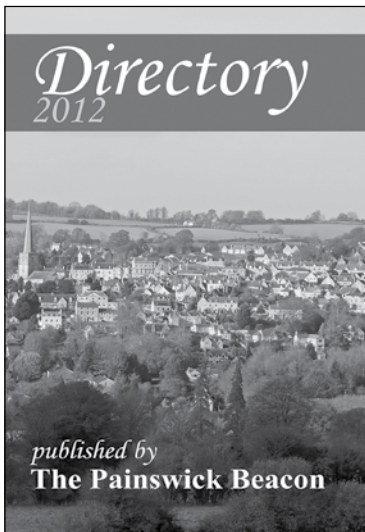
Local History Teaser

Bonny babies and toddlers are not new in Painswick as you can see. But can you identify any of these proud mums and/or their little ones? Indeed, might you be one of them?

Last month's teaser brought a quick response from Brian Jubb, recognising himself as the lad with the grubby knees on the left of the front row. The boys, many of whom were from the Gyde Home, were pupils of Painswick School and were about to go off on a cross-country run. This was about 1952. The photograph was kindly lent by John Hogg, himself in the middle of the picture about three down from the top. In fact, John won the race. If you have a photograph which you think would present a challenge to readers we should love to hear from you.

The next Local History Society meeting is on Tuesday, 17 January when Dr Christine Seal will give a presentation on domestic servants in the nineteenth century. Croft School, 7.30pm. Everyone is welcome.

Carol Maxwell



Directory 2012

We are pleased to enclose your free copy of the Painswick Beacon Directory. We wish to thank everyone who has assisted in its preparation by forwarding updating information and by so doing making the information it contains as current as possible.

JK's @ St Michael's Restaurant

Modern European Cuisine with a twist
Lunches, afternoon teas and evening meals

We also offer outside catering

01452 813832 jksatstms@hotmail.co.uk
Victoria Street Painswick

Subscriptions

We print and distribute 1550 copies of the Beacon in most months.

If you have overlooked subscribing please leave yours at the Post Office or send to:-

Peter Roberts Long Finals, Stamages Lane, GL6 6XA

Thank you

Beacon subscribers

as at 17th December	2011-2012	This date last year
New or renewed after lapsing	72	100
Renewed from last year	484	453
Total including postal	556	553

Out of the Mist

A tribute to The Royal National Lifeboat Institution.

The production was first performed in Cranham two years ago and more recently in May Hill. Based on true events *Out of the Mist* dramatizes the history of the RNLI over nearly two centuries. 'Time was when seafarers' lives were in the hands of God ... but beyond all human aid'. Now RNLI in association with Jenny Wren Productions, directed by Jenny Wicks, the Everyman Theatre, Cheltenham, presents *Out of the Mist* adapted for the big stage on Thursday 29th March, Matinee 2.30pm and Evening 7.30pm and Friday 30th March 7.30pm at Parabola Arts Centre, Parabola Road, Cheltenham by kind permission of the Principal, The Cheltenham Ladies' College.

For details of ticket prices and ticket vouchers, contact Alan Tyson on 07764235515 or tyson679@btinternet.com All proceeds to the RNLI.



Lifeboats

FALCON
PAINSWICK

Just made for Christmas

The perfect place to celebrate with family, friends, or workmates

01452 814222
www.falconpainswick.co.uk

"Chop 'n' Drop"
Bags of Kindling
£2.00 per bag

(40cms by 25cms)

Delivery min. 5 bags
Buy 5 get 1 free
Call 01452 813684

The Queen's Diamond Jubilee

The Parish Council is keen to ensure that the local community celebrates the two national events taking place this summer. The first is that of the Olympic Torch which will make its way through Painswick on May 23rd.

On June 4th the nation will celebrate Her Majesty The Queen's Diamond Jubilee when Her Majesty will become the second Monarch in British history to celebrate sixty years on the throne. The Right Honourable Jeremy Hunt MP who is the Minister in Government responsible for the Diamond Jubilee celebrations writes that, as part of the celebrations, a series of beacons will be lit across the UK. He reports that in 2002 over 1,800 beacons were lit to mark The Queen's Golden Jubilee. "Communities across the UK and around the globe, including as far flung as Antarctica came together to light a beacon and celebrate this very special occasion. In 2012 the plan is to have even more with 2012 being lit, with Her Majesty lighting the national Beacon on Monday 4th June".



The Painswick Beacon has been the location for the lighting of many beacons over the years and it is the intention that a beacon should be lit to celebrate Her Majesty's Diamond Jubilee in June. A committee has been set up to organise Painswick's celebration of both the Jubilee and the carrying of the Olympic Torch events.

If you would wish to be involved in the celebrations, please contact Roy Balgobin, the Clerk to the Parish Council on 812722 or at clerkpainswickpc@hotmail.com

Local Bearer?

The announcement of who will be carrying the Olympic Torch as it passes through Painswick on May 23rd is not expected for a few more weeks, but we know that nominations include some from this part of the world. We were struck by the description of a day in the life of a Torchbearer which was published on the Olympic web site. We hope that it helps to set the scene for what is certain to be a memorable day in the life of our village.

"Carrying the Olympic Flame will be a once-in-a-lifetime experience. The Torchbearers will help to shine a light on the best of their communities, as well as having their own moment to shine. Here's a typical day in the life of a Torchbearer.

The day begins. You wake up in the morning and you're excited: today's the day. You have your uniform, you know your position, you've told all your friends and family. You leave early so

you have plenty of time to reach your pick up location. With closest family and friends alongside, you head off for an experience you will never forget. As you near the pick up location, you see the other Torchbearers milling around – you start to feel nervous. There are media interviewing people, and the Torch Relay crew are making sure everything runs smoothly. You easily spot the Torchbearer shuttle bus and get on. As it sets off, the briefing session starts and helps to relax you: the details about how to handle the Torch and how the whole Relay works are pretty straightforward.

The final countdown. Then you're given the Torch you will be carrying.

You've seen others carrying it in the coverage of the Relay on TV ... now you've got your own. You get chatting to some of the other Torchbearers, they've got some amazing stories to tell. You tell them what taking part in the Relay means to you too. Before you know it, you have arrived at your allocated position. You get off the bus and wait. The crowd is excited to see you – they've read about you on the website and know you are something special. They chat to you and want to have their photos taken with you. A motorcyclist appears and helps you into position. A Torchbearer appears and is moving towards you. As they approach you feel



Painswick's Population

We thought that Beacon readers might be interested in the latest population estimates available from the County Council for Painswick Parish. The source of the data is the GCC Modelled Local Geography Population Estimates Mid-2009, Gloucestershire County.

Painswick Parish estimated total population in mid-2009: 3,140
 0-4 years: 122. 5-9: 150. 10-14: 143. 15-19: 171. 20-24: 66. 25-29: 60. 30-34: 87. 35-39: 183. 40-44: 214.
 45-49: 249. 50-54: 222. 55-59: 257. 60-64: 249. 65-69: 290. 70-74: 220. 75-79: 153. 80-84: 149. 85-89: 100. 90+: 54.

A comparison with the mid-1999 totals shows that the then estimated population of the parish was 2958. The 2009 estimate shows 456 parishioners over the age of 75 compared with 393 in 1999. In the 25-34 age group there was an estimated total of 278 in 1999 compared with 147 in 2009. A further interesting total is that of the 65 to 74 age group where there was an estimated total of 388 in 1999 compared with 510 in 2009.

the excitement building ... your Flames meet ... your Torch is alight.

Your moment to shine. You set off with the Flame, with your escort runners beside you. You can hear the cheers of the crowd – it's overwhelming ... there is a vehicle up ahead – it seems like a hundred cameras are filming you. After a while you start to relax and enjoy the experience. Up ahead you can see your family waving excitedly. Another Torchbearer is waiting for you – they look as nervous as you when you started. You exchange the Flame and cheer them on. Without realising, someone gently guides you off the road (so the convoy behind doesn't run you over).

Memories to last a lifetime. After greeting your family you are picked up again by the shuttle bus. As the rest of the Torchbearers get on the bus you can't wait to exchange stories about your experience. You arrive back at the original pick up point, everyone disperses and makes their way to the evening celebration site. You want to be with the people that have shared that incredible moment with you. You just want that exhilarating feeling to last forever. You have a story to tell – of a most precious moment in history ..."

Cardynham House
BISTRO
*A happy New Year
 to all our patrons*
We re-open 24th January
01452 810030

COLIN NASH
CONTRACTOR
 Fencing - Hedgecutting - Topping etc.
 Paddock cleaning
 with tractor or quadbike
Telephone 01452-813104
Holcombe Farm
Painswick GL6 6RG

Letters

The inclusion of letters, maximum 150 words, in these columns does not imply that the Beacon committee endorses the views expressed, or otherwise. Please supply the Beacon with your full name and address although such details will not appear in the Beacon unless you so request.

Traffic Committee report– Beacon Dec 2011

I note with dismay the resurrection of a proposal to remove on-road parking spaces in Kemps Lane.

These parking spaces are vital to local residents, and as a bonus the parked cars serve to slow down traffic in Kemps Lane.

Parking does restrict the width of the carriageway available to emergency vehicles – however there is a very effective and readily available emergency ‘bypass’ through the hotel car park, which is reasonably empty most of the time.

A ban on parking would merely move parked cars further down Kemps Lane and Tibbiwell Lane where the roads are even narrower. That certainly would inhibit the passage of emergency vehicles.

Instead of meddling with arrangements that work the Parish Council could more usefully focus on the Parish Plan, where there appears to have been a woeful lack of energy and initiative applied, and start developing a longer term strategy for off-street parking and traffic management.

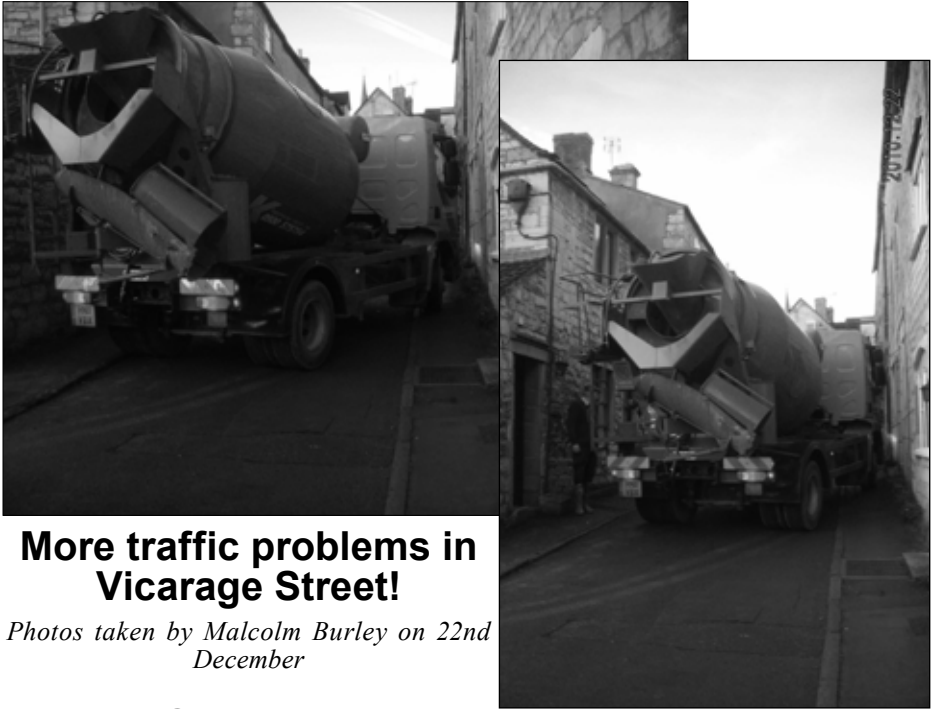
Leonard Chittenden

Ann Burges Watson writes:

I have enjoyed my 8 years on the PPC as Chairman of Traffic. However, it is not a job for life: I am not standing for re-election. It is time for a fresh approach and new ideas.

I have met an interesting cross-section of Painswickians and got to know some of the key problems e.g the shortage of parking. Health and Safety were my prime concerns in trying to make changes, trying to facilitate the passage of the Emergency Services. The Lorry Management Scheme has reduced heavy traffic on the A46; the 20 mph scheme works better and a Vehicle Activated Sign will be in place soon. There are two disabled slots, a ramp into the churchyard, various dropped kerbs, a snow and ice programme and bollards by the stocks.

Thank you Painswickians for your co-operation: your support was much appreciated. It is a worthwhile job and I hope others will come forward.



More traffic problems in Vicarage Street!

Photos taken by Malcolm Burley on 22nd December

Parish Council Walk



The 2011 Boxing Day walk took place on a mild, damp morning. 27 adults and children plus one dog set off from Stamages Lane car park and made their way via Sheepphouse, going on to cross Pincot Lane and then to Hammonds Farm. They then crossed Wick Street and went on to Folly Lane before returning to the car park. Some of the walkers came back via Junipers whilst others took the longer route through Frith Wood. Our thanks to Wally Waters for the photograph of the group and also for the providing details of the distance covered. The main group's walk was 8.5kms and those who went via Bulls Cross, 10kms. The time taken by both groups was approximately 2 hours. This year will see the 25th anniversary of the walk. Thanks to those who braved the very muddy conditions.



Richmond Painswick Wellness Spa – looking after Mind, Body and Soul

**A state-of-the-art complex with gymnasium,
pool, jacuzzi, sauna and steam room**

Wide variety of Health and Beauty treatments
Spa day packages available | Open to non-members

Call the Wellness Spa team on 01452 810211 to book your appointment

Rugby

Rugby Report

On Saturday 10 December Painswick 1st XV travelled to Bristol in anticipation of a tough struggle against an in-form Ashley Down Old Boys team. Despite an early lead from a converted penalty Painswick soon found the Home team applying sustained pressure leading to 3 successful penalties for Ashley Down. Just before half-time Painswick fought back with James Hall taking the ball over the line following a well executed move giving the visitors a narrow lead at half time.

In the second half Painswick, with the slope in their favour, put on superb performance taking the final score to a very creditable Ashley Downs OB 16, Painswick 34.

Saturday 17th saw Painswick playing at home, lose their unbeaten home record as Bream scraped a win with a last minute penalty. After an even start Painswick capitalised on a sustained period of pressure when fullback Dom Barnard cut an excellent line to score under the posts. The stronger Bream pack then took control and by half time their pressure had led to 3 successful penalties.

Playing downhill Painswick started the second half confidently and substitute Jake Saunders followed up his own kick forcibly to claim a second try, which again was not converted. Bream adapting to the muddy conditions well, then forced a further penalty to lead 12-10.

Painswick retaliated well and Barnard, having just missed an easier effort, coolly slotted over a penalty to give his team a 1 point lead with 4 minutes left.

Poor discipline led to further penalties for Bream, the second of which sealed their victory after a close fought game. Painswick 13,

Rugby Minis and Juniors

The mini and junior rugby section at Painswick continues to go from strength to strength, with over 250 playing members and sides at every age group, from the tiny U6's looked after by Cos Ttofias and Mike Dandy through to the young men of the U17. Last year saw this production line contribute to the seniors for the first time, with 7 players regularly turning out for the firsts and seconds. Each age group has its own qualified coach and helpers, with a smattering of ex Gloucester names such as Derek Morgan and Andy Curtis to add some real life experience.

There is a clear family focus, with all coaches RFU qualified. Sunday mornings are typically a riot of colour with regular visits from local sides such as Dursley, Hucclecote, Cirencester and Stroud, and later in the year touring sides from all over the country. The county organises a cup competition for each age that runs in the second half of the season and allows us to travel a little wider and meet new opposition.

We are very proud to have a number of the members who have represented the Gloucestershire District and been involved in the Gloucester Academy based at Hartpury, and hope that we will be able to emulate our Lions representative, Tim Payne in time. If you fancy joining in, either as a player, supporter or simply a helper please come along!

Rugby Fixtures

All matches are league games unless otherwise indicated.
Painswick first fifteen play in Gloucester Division 1.
Painswick United play in Gloucestershire Reserve League North 2.

January

Sat 7th. Cheltenham Saracens 1st XV v Painswick 1st XV.
Painswick United v Berry Hill 3rd XV.
Sat 14th. Painswick 1st XV v Dursley 1st XV.
Stroud Nomads v Painswick United.
Sat 21st. Gloucester Old Boys 1st XV v Painswick 1st XV.
Painswick United v Hucclecote 2nd XV.
Sat 28th. Painswick 1st XV v Hucclecote 1st XV.
Painswick United v Cinderford 4th XV.

February

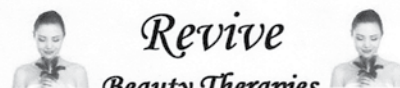
Sat 4th. Kingswood 1st XV v Painswick 1st XV.
Painswick United v Cirencester 3rd XV.
Sat 11th. Smiths 2nd XV v Painswick United (Friendly).
Sat 18th. Painswick 1st XV v Newent 1st XV.
Gloucester Old Boys 2nd XV v Painswick United.

March

Sat 3rd. Painswick 1st XV v Spartans 1st XV.
Painswick United v Drybrook 3rd XV.
Sat 10th. Ross on Wye 1st XV v Painswick 1st XV.
Painswick United v Old Richians 3rd XV.
Sat 24th. Painswick 1st XV v Ashley Down Old Boys 1st XV.
Bream 2nd XV v Painswick United.
Sat 31st. Bream 1st XV v Painswick 1st XV.
Painswick United v Old Centralians 2nd XV.

April

Sat 14th. Painswick 1st XV v Brockworth 1st XV.
Brockworth 2nd XV v Painswick United.



Revive
Beauty Therapies

- ❖ Manicures, Pedicures & Nail Extensions
- ❖ Waxing & Tinting
- ❖ Thalgo Facials & Body Treatments
- ❖ Swedish Body & Indian head Massage
- ❖ St Tropez Tanning
- ❖ Make-up - Inc Wedding Make-up
- ❖ NEW for 2011 Eyelash Extensions

Chloe Smith BTEC

TEL: 07859 880641

*Three Gables Centre, Painswick,
www.thethreegables.co.uk*



**PAINSWICK ACCOUNTING
& TAXATION SERVICES LTD**

**FOR ALL OF YOUR
ACCOUNTING AND
TAXATION NEEDS**

PLEASE CONTACT SHARLA DANDY

ON **01452 813533**

OR EMAIL sharla@paatsltd.co.uk



VISIT OUR WEBSITE
www.paatsltd.co.uk
FOR MORE INFORMATION

NEWSPAPER & MAGAZINE DELIVERIES

Six day week deliveries Monday to Saturday
Voucher schemes accepted

Approximate delivery time 5.00am - 7.45am

More accurate delivery times are

available upon request

For more information or to place
any order please contact



Andy Christmas

07719.998471 07765.232122 07775.199171



Painswick Golf Club

Despite some cold and stormy days recently, you cannot keep golfers away from the course for long. As well as just getting out and having a good game with friends,

there have been a few competitions in the last month.

In the seniors' section, the November Medal had to be called off when thick fog descended, but the December Medal took place on 1 December and was won by Roger Anthony with a very impressive score of 45. Late in November, a Texas scramble competition was won by Mick Carter, Peter Rowe, Brian Minchin and David Thomas. And on 8 December the seniors' Christmas Competition was held in a bowmaker format. Golfers were divided into teams of three. On the first six holes, everyone's score counted. On the next six holes, the best two scores counted and on the last six holes the best score counted. The winners were Brendan Nunan, Norman Pullin and Ian Smethurst with a total of 82 points. During the course of the competition John Courts had a "hole-in-one" on the 7th, which we all celebrated afterwards.

If you would like to join the club or book a tee time or a lesson, please get in touch with our professional, Marc Cottrell, on 01452 812615. The club welcomes visitors.

Tennis Club Dinner

The second annual dinner and awards evening was attended by 61 members, and held on Saturday 22nd October at the Painswick Golf Club. After an excellent meal, with music played by Luke Bailey, the first two awards were presented by John Courts. The first of these was for the 'outstanding player of the year' and this went to Alicia Barnett, who has now achieved a national ranking of 32. The second award was for the 'best club member' and this was won by Roger Stewart. The final cup, presented by Joan Griffiths, went to Graham Britton as the 'most improved player'.

Next year's dinner will be a celebration of 50 years of the club and will be held in mid September.

Club's AGM

The Tennis Club AGM was held in November with few changes on the committee except Adrian McDowell replaces Robin Hall as Men's captain as Robin was standing down after 10 years service to the club. The Ladies captain's position remains unfilled.

The following junior awards were made at the meeting.

The Peter Bolton Cup for the junior who contributed most to the club went to Callum Roberts.

The Boris Becker Cup for the most improved boy went to Columba Leeper.

The Maureen Connolly Cup for the most improved girl went to Emily Hall.

Painswick Beacon Common

Readers will be aware that it is intended to re-introduce cattle on parts of the Painswick Beacon for grazing. We understand that this is to take place very shortly under the Painswick Beacon High Level Stewardship Scheme.

It is also understood that the cattle will be Belted Galloways. Our photograph shows Belted Galloways with their distinctive marking.



JOE REED



General Plumbing

And Minor Domestic Electrical Work

07967 742601

Gas Safe and Part 'P' Registered



**General Building Work
Kitchens / Bathrooms
Extensions / Garages
Barn conversions
New Build
Renovations Etc.**

A Member of
The Guild of Master Craftsmen

**Richard Twinning
& Partner**

General Builders
With over 20 year's experience

Tel: 01452 812086
Mobile: 07899 791659
Fax: 01452 810785

**Natural Stone Work
Hard landscapes
Dry stone walling
Patio's and Pointing**



**Professional
Ironing,
Dry cleaning,
Laundry &
Repairs/Alterations**

**FREE
Collection
& Delivery**



Tel: 01452 740129

www.ironeasy.biz

Wick Street Security

Locksmith & Secure Solutions

Moved Home or Office? Who's Got Keys?

All types of security equipment supplied
& fitted to insurance standards.
Lock opening service & period lock
restoration.

Tel: 01452 812201 Mob: 07812 540178
Email: info@wickstreetsecurity.com

Davenports

Landscaping & Building

Renovations • Extensions • Natural Stone
Work • Paving & Driveways • Dry Stone
Walling • Groundworks • Decking

T: 01452 813660
M: 07791 693439
E: mike@davenportports.uk.com

www.davenportports.uk.com

January News

This month I would like to tell you about The Warm Home Discount Scheme (WHD), which came into operation in April 2011, replacing many of the Social Tariff Discount schemes offered by Energy Companies. We understand the WHD is offered for electricity consumption only.

Energy companies who are participating in this Scheme are: Atlantic, British Gas, EDF Energy, E.ON, Equigas, Manweb, M&S Energy, npower, Sainsbury's Energy, Scottish Gas, Scottish Hydro, Scottish Power, Southern Electricity, SSE, Swalec and Utility Warehouse.

If you qualify under the scheme you will receive an automatic £120 discount on your electricity bill for winter 2011/2012, as well as for the next 3 winters. You will automatically qualify for the discount if you receive the Guarantee Credit element of Pension Credit on the qualifying date, which is 11 September 2011. Your energy supplier should send you a letter confirming your entitlement. Letters are being sent from November to February. Anyone who receives some Savings Credit element of Pension Credit as well the Guarantee Credit or only the Savings element of Pension Credit will not automatically qualify for the discount. If you are in this situation we suggest you contact your energy supplier to discuss your possible eligibility for the discount.

Under the WHD, electricity suppliers may also give a discount of £120 to some customers who don't automatically qualify. Most suppliers have identified these customers as those who receive a means-tested benefit, such as Income Support, Income Based Jobseekers Allowance, Income Based Employment Support Allowance, and who either have a child under 5

VILLAGE
Agents

years, or receive a disability benefit.


If you would like more information about the Warm Home Discount please contact your Energy Company or The Department for Energy and Climate Change, who are responsible for WHD policy and legislation. They can be contacted on enquiries@decc.gsi.gov.uk

DECC telephone number : 0300 060 4000.

Discounts paid under the WHD scheme will not affect any entitlement you may have to Winter Fuel Payments or Cold Weather Payments.

Lou Kemp
Tel: **07776 245767**

Physiotherapy & Sports Injury Clinic



- Acupuncture
- Cranio-Sacral Therapy
- Sports Injuries
- Sports Massage
- Osteoarthritis Management
- Hydrotherapy

AT

Painswick & Stroud

Phone: 01453 755948

Call now for a consultation and begin your road to recovery

PROPERTY REPORT for December from Murrays

Murrays Estate Agents wish you all a happy, healthy and prosperous New Year.

Welcome to 2012. May we extend our best wishes for a happy and successful New Year and hope you all enjoyed the recent festivities. So! What's going to happen in 2012 you may well ask; good question! Clearly the market has remained fairly flat in the last few months but Nationwide have said that housing prices have remained surprisingly resilient and that there was a 0.4% monthly rise in November. The price of a typical home has risen to £165,798, 1.6% higher than a year ago, Nationwide said, following a 0.8% year-on-year increase in October. So it is not all doom and gloom and as I think everybody is now beginning to learn that with a positive approach from the agents and a realistic market price, the market place is still ticking along quite nicely. It is also worth remembering in the New Year that choosing the right estate agent is very important when selling your property – does one select an agent with the best local knowledge, the most experience, the finest track record, the best network across the country and a London office? Well I am happy to say that Murrays Estate Agents cover all these factors and as we have been selling property in the area for over 30 years you will struggle to find another agent with more knowledge of the

area and its individual properties.

December saw the usual slow down as people started to concentrate on getting ready for Christmas and the New Year, putting either buying or selling their property on hold until after all the festivities. However this said we still had properties completing right up until the 23rd December!

We have continued to take on new properties over the festive period and these include; 3 Berry Close a well presented modern 3 bed family house in Painswick close to the school, 2 Hill View Cottages a 3 bed cottage with a large garden on Gloucester Street which already has an offer on it and Turnpike House a modern 3 bed house in Slad with stunning views.

Properties and land that we currently have under offer are Longridge View on Vicarage Street, 32.5 acres of land on the outskirts of Painswick and Bramble Cottage in Cranham, and properties that have now sold are Hornbeams in Slad and Green Hedges on The Plain in Whiteshill.

James C Murray - Partner



In-depth local knowledge. A global network, including 5 Cotswold offices. Why settle for anything less?

Hamptons Painswick
01452 812354

www.hamptons.co.uk



THREE COTSWOLD OFFICES & MAYFAIR LONDON
PrimeLocation.com

New Street PAINSWICK
01452 814655
www.murraysestateagents.co.uk

2012

JANUARY

Sat	7	Painswick Beacon Conservation Group scrub clearing working party: location check 813734	Painswick Beacon	10.00am
Mon	9	Yoga (Mondays) contact Kim 812623	Sheepscombe Vill. Hall	6.30 to 8.00pm & 8.15 to 9.45pm
		Painswick Community Choir - Mondays (Enquiries Adrian 07855404147)	Painswick Centre	7.00 to 8.30pm
Tue	10	Painswick Rococo Garden opens Cupcakes for Carers Tea party Bingo: Tuesdays – Tel. Ann, 813911/Liz, 813139	Rococo Garden P.Centre, Green Room Ashwell House	11.00am 1.30 to 4.30pm 6.30 to 9.00pm
Wed	11	Yoga (Wednesdays) contact Kim 812623 Horticultural Society: Snowdrops in the Gardens of Colesbourne Park- Dr J Grimshaw Table Tennis restarts (Wednesdays) - Enq. 812464	Sheepscombe Vill. Hall Richmond Painswick Painswick Centre	9.30 to 11.00am 2.30pm 7.00 to 9.00pm
Thu	12	Yoga - All Abilities (Thursdays) Cotswold Room 812623 T'ai Chi: Thursdays - Contact 812344 Dog Training Club (Thursdays) Jolly Stompers Line Dancing: Beginners - Thursdays Experienced beginners - Thursdays	Painswick Centre Painswick Centre Church Rooms Shire's Bar Shire's Bar	9.30 to 11.00am 9.30 to 11.00am 9.30 to 12.00noon 12.00 to 1.00pm 12.30 to 1.30pm
Fri	13	Friday Club	Church Rooms	2.30pm
Mon	16	Community Lunch: hosts - CTAP	Ashwell House Centre	12 noon to 1.15pm
Tue	17	Local History Society: Domestic Servants in the 19th Century - Dr Christine Seal	Croft School	7.30pm
Wed	18	Probus: Rugby Football - Ian Beer Parish Council Meeting	Painswick Centre Church Rooms	10.00am 7.30pm
Thu	19	CTAP - Speaker & Afternoon Tea (Christian Unity Week) Music Appreciation Group: Forgotten Composers	Richmond Painswick Church Rooms	2.30pm 7.30pm
Sat	21	Copy dateline for Febuary Beacon Painswick Beacon Conservation Group scrub clearing working party: location check 813734	Painswick Beacon	10.00am
Mon	23	Community Lunch: hosts - Painswick Centre Trustees Agape at the Bistro - Christian Unity Week	Ashwell House Centre The Bistro	12 noon to 1.15pm 7.00pm
Tue	24	Yew Trees W.I.: Sahara Marathon - Celia Hargrave	Church Rooms	7.30pm
Wed	25	No Table Tennis tonight		
Thu	26	Theatre Club Outing to Bath Painswick Players perform 'The Bear' & 'Alternative Accommodation' (also 27th & 28th)	Stamages Car Park Painswick Centre	11.30am 7.30pm
Fri	27	Friday Club	Church Rooms	2.30pm
Mon	30	Community Lunch: hosts - Yew Trees W.I.	Ashwell House Centre	12 noon to 1.15pm

FEBRUARY

Wed	1	Probus: Some of the USA National Parks - Theo Stening Cotteswold Naturalists' Field Club Lecture: The African Elephant - David Lemon. Enq. 813228	Painswick Centre Painswick Centre	10.00am 2.30pm
Thu	2	Music Appreciation Group: Leonard Bernstein	Town Hall	7.30pm
Fri	3	Country Market reopens - coffee available	Town Hall	10.00am
Sat	4	February Issue of The Painswick Beacon published Painswick Beacon Conservation Group scrub clearing working party: location check 813734	Painswick Beacon	10.00am
Mon	6	Community Lunch: hosts - Painswick Golf Club	Ashwell House Centre	12 noon to 1.15pm
Wed	8	Horticultural Society: Walled Kitchen Gardens - Will Scott	Town Hall	2.30pm
Wed	15	Probus : Passage Through Time; Syria & Petra - Bob Price Music Appreciation Group: Concert Outing to Colston Hall, Bristol	Painswick Centre Stamages Car Park	10.00am 4.00pm
Thu	16	Painswick Bird Club: "Urban Dwelling Peregrines" - Edward Drewitt, Broadcaster & Wildlife detective	Town Hall	7.30pm



Sat	18	Painswick Beacon Conservation Group scrub clearing working party: location check 813734	Painswick Beacon	10.00am
Mon	20	Community Lunch: hosts - Friday Club	Ashwell House Centre	12 noon to 1.15pm
Tue	21	Local History Society: The Inns & Outs of Painswick - David Archard & Helen Briggs	Croft School	7.30pm
Thu	23	Theatre Club Outing to Cheltenham	Stamages Car Park	1.00pm
Mon	27	Community Lunch: hosts - Richmond village	Ashwell House Centre	12 noon to 1.15pm
Tue	28	Yew Trees WI: An Inspector Calls - Allan Callender (Open Meeting)	Church Rooms	7.30pm
Wed	29	Probus: Painswick Through the Decades - David Archard	Painswick Centre	10.00am

MARCH

Thu	1	Music Appreciation Group: Juxtapositions	Town Hall	7.30pm
Fri	2	Women's World Day of Prayer	Catholic Church	11.00am
Sat	3	Painswick Beacon Conservation Group scrub clearing working party: location check 813734	Painswick Beacon	10.00am
Mon	5	Community Lunch: hosts - Painswick Bird Club	Ashwell House Centre	12 noon to 1.15pm
Wed	7	Cotteswold Naturalists' Field Club Lecture: The Last Days of Ocean Sail. Enq. 813228	Painswick Centre	2.30pm
Thu	8	Painswick Bird Club: "The Wildlife of West Wales" - Mike Robinson	Town Hall	7.30pm
Sat	10	Village Quiz	Painswick Centre	
Mon	12	Community Lunch: hosts - Probus Ladies	Ashwell House Centre	12 noon to 1.15pm
Wed	14	Probus: Joint meeting & Lunch with the Ladies	Church Rooms	12.00noon
		Horticultural Society: Eating for Good Health - Julia Scott	Town Hall	7.30pm
Thu	15	Music Appreciation Group: Famous Singers of our Era	Town Hall	7.30pm
Sat	17	Painswick Beacon Conservation Group scrub clearing working party: location check 813734	Painswick Beacon	10.00am
Mon	19	Community Lunch: hosts - Park Residents	Ashwell House Centre	12 noon to 1.15pm
Tue	20	Local History Society: The Development of Georgian Gloucester - Dr Nicholas Herbert	Croft School	7.30pm
Sat	24	Theatre Club Outing to The Water Mill, Newbury	Stamages Car Park	10.30am
Tue	27	Yew Trees WI: Herbs & Spices - Natalie Hunt	Church Rooms	7.30pm
Wed	28	Probus: Present Position in the Middle East - Richard Long	Painswick Centre	10.00am
Thu	29	Music Appreciation Group: Committee Choice	Town Hall	7.30pm
Fri	30	Music Appreciation Group Concert Outing to Symphony Hall, Birmingham	Stamages Car Park	10.30am
Sat	31	Painswick Beacon Conservation Group scrub clearing working party: location check 813734	Painswick Beacon	10.00am
		Painswick Music Society Concert: Emma Johnson, Clarinet & John Lenehan, Piano.	St Mary's Church	3.00pm

APRIL

Tue	3	Painswick Bird Club / Painswick Beacon Conservation Group: Birds of Cleeve Hill - Arthur Ball	Town Hall	7.30pm
Wed	4	Cotteswold Naturalists' Field Club AGM & Lecture: The Wildlife of Australia. Enq. 813228	Painswick Centre	2.30pm
Fri	6	Painswick Singers Good Friday Concert	St Mary's Church	7.30pm
Wed	11	Probus: Road Travel in Georgian Gloucestershire - Nicholas Herbert	Painswick Centre	10.00am
		Horticultural Society: Wildlife & Plants of the Royal Forest of Dean - Pete Ralph	Town Hall	7.30pm
Thu	12	Music Appreciation Group: Personal Choice	Town Hall	7.30pm

Entries for the Village Diary should be sent direct to
Eddie Buttrey at
em-m.buttrey@virgin.net

While we are only too pleased to publish dates of forthcoming events as far into the future as organisers wish, and space permits, we may in future delete those which refer to recurrent weekly meetings at the start of the next month if such prevents us from including periodic events many months hence.

We urge those organising weekly events/meetings to use our other columns to make short reports and highlight their having frequent events.



NEW APPLICATIONS

THE BARN, Wick Street
Upgrade of downstairs existing storm proof windows with wooden double glazed units of traditional casement style.
RIDGEWOOD, Queens Mead
Removal of existing wooden lean to. Erection of replacement extension.
FAIRINGS, Castle Close
Single storey extension.
WINDYRIDGE, Longridge, Sheepscombe
Retrospective application for a log cabin annexe to be used as office/studio incidental to the main house.
CASTLE GODWYN, Paradise
Internal alterations
HOYLAND HOUSE, Gyde Road
Change of use of part of lower ground floor from medical/health Services to estate agency.

PLANS WITHDRAWN

LAND AT, TIBBIWELL LANE.
Agricultural access to Tibbiwell Lane.

Work is well advanced at the **Town Hall**. Our photo shows the Lower Hall before Christmas.



Wassailing Evening

Come along to our first Wassailing event on Saturday 14th January. Look out for the posters around Painswick., We'll be processing down to the Beech Lane Orchard to wake up the trees. There will be music, dressing up and certainly cider. Ring 812879 for the details and look out for the posters.



The Painswick Community Orchard Group

Family Tree Funerals

For a much, much more personal funeral

01453 767 769

www.familytreefunerals.co.uk
The Old Painswick Inn, Stroud

CONSENT

GYDE HOUSE, Gyde Road
Rebuild chimney stack
OLIVERS STABLE YARD, Cheltenham Road
Addition of photo electric cells array to existing barn roof.
TOWN HALL, Victoria Street
Internal alterations to provide disabled facilities

REFUSAL

THE BARN AT STROUD SLAD FARM, Slad Lane
Change of use of barn to 2 holiday let units, farm office and kitchen for pastry company. Retention of external works already carried out and further external alterations.

MINI-ADS

Brand new **Calor Gas Fireplace** with heater. Two settings, log effect fire with 15kg. bottle of gas. No chimney is needed. £45 o.n.o. Tel: 813252

Modern high-back swivel/rocker chair in cream leather. Excellent condition. Offers in excess of £100. Phone (01452) 814004.

Magimix 'Le Duo' Juicer. Juices both fruit and vegetables.

Delice Ice Cream Maker. For all ice cream and sorbets. Both very little used and in excellent condition with instruction/recipe books £50 each Tel: 814360

Long length of brand-new unused fabric bought at Painswick Fabrics, pale grey and white linen/cotton, enough to cover sofa or make very long curtains (or two pairs). Offers. Virginia Falconer 814009

BUSINESS

Pitchcombe Parish Council needs to appoint a part-time **Parish Clerk**. Annual salary is £1300 for a three hour working week. Details are on website <http://www.pitchcombe-pc.gov.uk>
Closing date 14th January, 2012.

AUTUMN garden Services, with local references. Hedge cutting/shaping. Fencing maintenance/erection, general garden clearance, weed control, exterior decorating. Gutters and patios cleaned. Contact Julian Telling 07895 224863. Juliantelling@yahoo.co.uk

Handyman www.stroudhandyman.com
Local legal and insured. Clean, efficient and flexible are words used to describe me. Very competitive rates. Please call to discuss jobs, small or large. Matthew Taylor 07887 719806

Pembrokeshire Holiday Cottage available to rent; sleeps 4-5 in 2 bedrooms. From £195 - £475 pw, fully serviced. Woodburners, garden, in coastal village, close to beaches. See www.fountainfach.co.uk or contact Helene on 814112.

Discover North Norfolk – it's Wildlife and tranquillity. **Three bed detached period cottage to let**, CH etc. Discount for Beacon readers. Full details 810942 www.fivethegreen.co.uk

Forestry and Land Maintenance. Professional tree work, grounds and woodland maintenance, fencing and firewood. Tel: 01452 813697 (m) 07795 597901 jasperdrake@btinternet.com

PK Window Cleaning. Outside and inside cleaning. Frame cleaning. Copnservatory rood cleaning. Gutter emptying/cleaning. Fully insured. Reliable friendly service. Call Phil on 01453.840468 or mobile 07772 434785

INSIDE OUT cleaning services

Professional Carpet, Rug, Upholstery & Stone Floor Cleaning
Carpets dry in 30 minutes

Craig Lindsey

01453 548152
07890 282535

Craig@insideoutcleaningservices.co.uk
www.insideoutcleaningservices.co.uk

NCCA NATIONAL CARPET CLEANING ASSOCIATION
FSB MEMBER

The Personal Column

Jenny Gaugain

Births

To KATE and BEN BEAMISH, a daughter Chloe Ann - a sister for Thomas and 3rd grandchild for Carolyn and Brian Musty

Engagement

Our congratulations to ED MARDEN and LISA CHAPMAN who got engaged on top of Mount Teide in Tenerife and who will be married on April 28th 2012

Condolences

Our sincere sympathies to the family and friends of JOAN RIDGELL and DIANA BRUTON who have died recently, Diana lived for over thirty years in Tibbiwell and died on October 22nd at Horsfall House, Minchinhampton

You could help Jenny Gaugain, if you would relay information about those you know and for whom a mention in the Personal Column would be appreciated.

Goodbye 2011 – welcome 2012

During the past year the Beacon has reported on many of the events that have taken place in our community. Some of the happenings will be relevant to 2012. The one subject that has been reported on in some depth is that of the proposed Community Library. It is hoped that the library will open in a few months. The allotments saga has continued with the expectation that the matter will be resolved very shortly. The Parish Council reported the good news that the 2012/13 local tax level would show no increase from this year. The parish was delighted to learn that the Olympic Torch is to pass through Painswick in May and there is much interest in who will carry the Torch. 2012 brings the Diamond Jubilee of Her Majesty The Queen and arrangements are being made to celebrate the event locally. A highlight is expected to be the lighting of a beacon on Painswick Beacon. This year also brings the election of a new Parish Council when the community will have the opportunity to reflect on the Council's future membership. In conclusion, the Painswick Beacon committee members wish all parishioners a very Happy New Year.



Printed in Gloucester
for
The Painswick Beacon
by
www.inkylittlefingers.co.uk
01452 751900



Peter Barnfield
Painter and Decorator
**Need a hand with your decorating
or odd jobs?**
External/Internal decorating
Paperhanging – no job too small.

Free Quotations
References available on request
Call me on Tel: 01452 411182
Mobile: 07881408380
Peter.Barnfield@blueyonder.co.uk

• painswick
osteopaths •

Paul Stamp D.O.
Helen Froggatt D.O.

Tel: 01452 301748

Painswick Surgery, Gyde Rd. Painswick

- Structural
- Cranial Osteopathy
- Sports Injury
- Migraine/Whiplash
- Parking Available

NEXT ISSUE

Publication date

SATURDAY

4th February

Dateline for all copy

SATURDAY

21st January

for editorial attention use

beacon@painswick.net

or hard copy - preferably typed

Beacon post box - New Street

All copy must include author, address
and contact telephone number.

Photographs and advertising art work
original at 600dpi in JPEG

web site - about us

www.painswickbeacon.org.uk

for current issue and archive,
our history and aims,
the annual directory, village maps
and the current weather forecast

The Beacon Team

Co-ordinating Editor this month

Terry Parker 812191
terence5545@btinternet.com

Editing Associates

Peter Jenkins 812724

pdj.beacon@tiscali.co.uk

Leslie Brotherton 813101

mr@lesliebrotherton.com

Personal Column

Jenny Gaugain 812599

f.gaugain@btinternet.com

Diary

Edwina Buttrey 812565

em-m.buttrey@virgin.net

Feature writers

Carol Maxwell 813387

Carolmaxwell@talktalk.net

Sport

John Barrus 812942

barrusjp@yahoo.co.uk

Distribution

Celia Lougher 812624

celia@lloydstone.plus.com

Treasurer

Richard Aspinall 812379

rgrasp@tiscali.co.uk

Advertising

Joyce Barrus 812942

joycebarrus@yahoo.co.uk

Subscriptions

Peter Roberts 813271

petedr56@btinternet.com

Quiz

Leslie Brotherton 813101

mr@lesliebrotherton.com

Directory

Carol Maxwell 813387

Carolmaxwell@talktalk.net

Production Assistant/Graphics

Emma Jackson